

ROUNDBABOUTS

DON'T HAVE TO MAKE YOUR HEAD SPIN

HOW DO I DRIVE THROUGH A ROUNDABOUT?



Slow Down

Prepare to yield or stop.



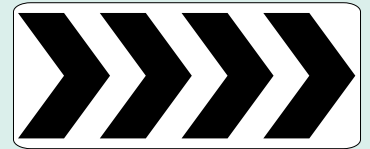
Look

Check crosswalks for pedestrians.



Yield

Look to your left and yield to vehicles inside the roundabout.



Stay Right

Travel to your right to your exit.

US 6/US 169 &
COMMON PLACE/SCHOOL ACCESS
ADEL, IOWA



Large Vehicles **A**

Large vehicles can use the **truck apron** – the raised center island – for extra room for their rear wheels when turning.

Pedestrians **B**

Pedestrians should cross one direction of traffic at a time.

1. At the crosswalk, look left for traffic before entering the roundabout.
2. At the raised splitter island, stop and look right, then finish crossing.

Drivers should check for pedestrians when entering and exiting the roundabout where crosswalks are present.

Emergency Vehicles

Always yield to emergency vehicles in the roundabout.

If you have already entered the roundabout, continue to your exit, then pull over and allow emergency vehicles to pass.

Do not stop in the roundabout.



For more information visit:
IOWADOT.GOV/TRAFFIC/ROUNDBABOUTS

CONTACT

Scott Suhr, Iowa DOT District 4 Field Services Coordinator/District Planner • 712-243-3355 • scott.suhr@iowadot.us

IOWA | DOT

SCAN ME

IOWA HAS MORE THAN 150 ROUNDABOUTS. **WHY?**

Safety

Roundabouts reduce severe crashes.

- Speed and severity of potential crashes are reduced.
- The overall risk of crashes is reduced by 40%.
- The risk of fatal and injury crashes is reduced by 70-80%.

Efficiency

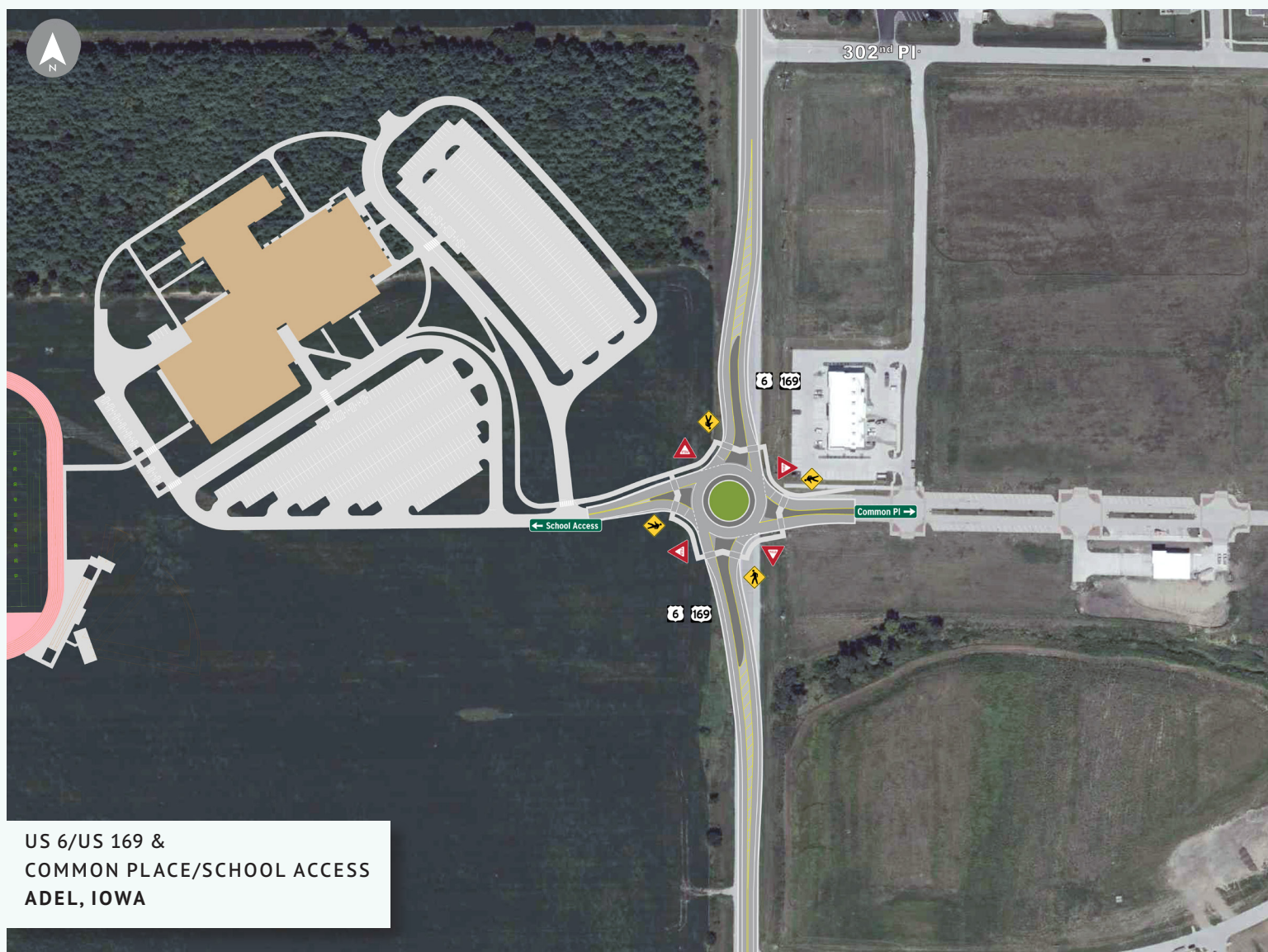
Roundabouts reduce delays.

- School Access and Common Pl wait times are reduced compared to a stop sign since roundabouts create easier gaps in US 6/169 traffic.
- Traffic moves more efficiently during peak traffic times compared to a traffic signal.
- Drivers don't need to wait for traffic signals during less busy times.

Versatility

Roundabouts benefit everyone.

- Raised islands are designed for farm vehicles and semi- and fire trucks.
- Pedestrians only need to cross one direction of traffic at a time.
- Roundabouts are commonly built near schools and recommended by the American Association of Retired Persons (AARP).



PROJECT SCHEDULE

Design
2025

Letting
Winter 2026

Construction Begins
Spring 2026

Construction Ends
Fall 2026