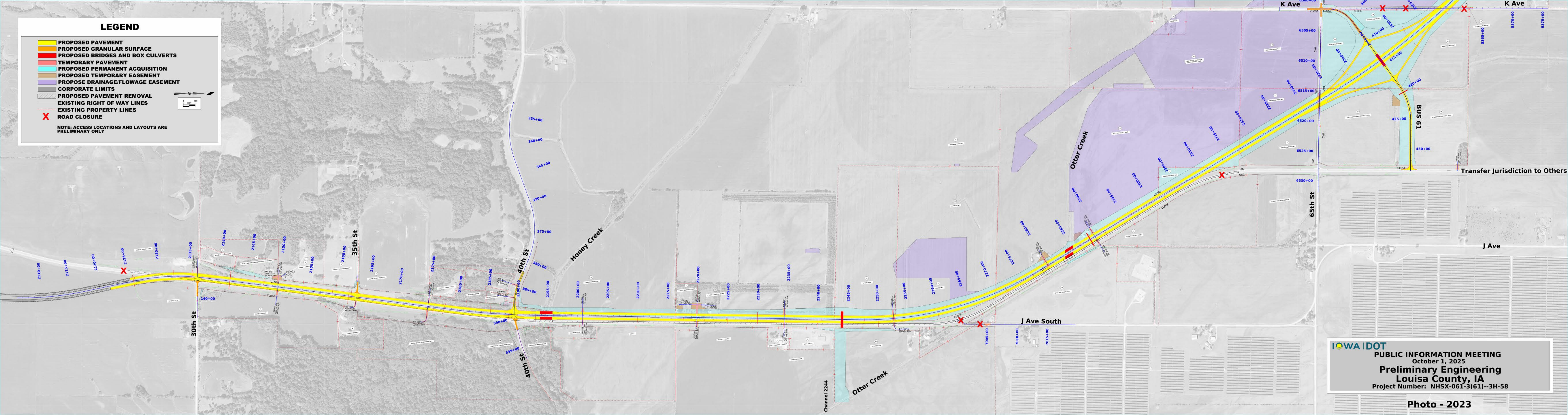


LEGEND

- PROPOSED PAVEMENT
- PROPOSED GRANULAR SURFACE
- PROPOSED BRIDGES AND BOX CULVERTS
- TEMPORARY PAVEMENT
- PROPOSED PERMANENT ACQUISITION
- PROPOSED TEMPORARY EASEMENT
- PROPOSED DRAINAGE/FLOWAGE EASEMENT
- CORPORATE LIMITS
- PROPOSED PAVEMENT REMOVAL
- EXISTING RIGHT OF WAY LINES
- EXISTING PROPERTY LINES
- X ROAD CLOSURE

NOTE: ACCESS LOCATIONS AND LAYOUTS ARE PRELIMINARY ONLY



IOWA DOT
PUBLIC INFORMATION MEETING
 October 1, 2025
Preliminary Engineering
Louisa County, IA
 Project Number: NHSX-061-3(61)--3H-58

Photo - 2023