

The background image shows an industrial facility, possibly a refinery or chemical plant, during a sunset. The sky is filled with soft, pink and orange clouds. In the foreground, there is a grassy field with some dry vegetation. A large, dark teal arrow-shaped graphic points from the top left towards the center of the image. The text 'EXECUTIVE SUMMARY' is written in white, uppercase letters across the teal area.

# EXECUTIVE SUMMARY



# Needs and Opportunities

Identified as part of Rail Planning Considerations using passenger and freight transportation inventories, performance, trends, and impacts. Items are summarized into six categories.

## Key Issues

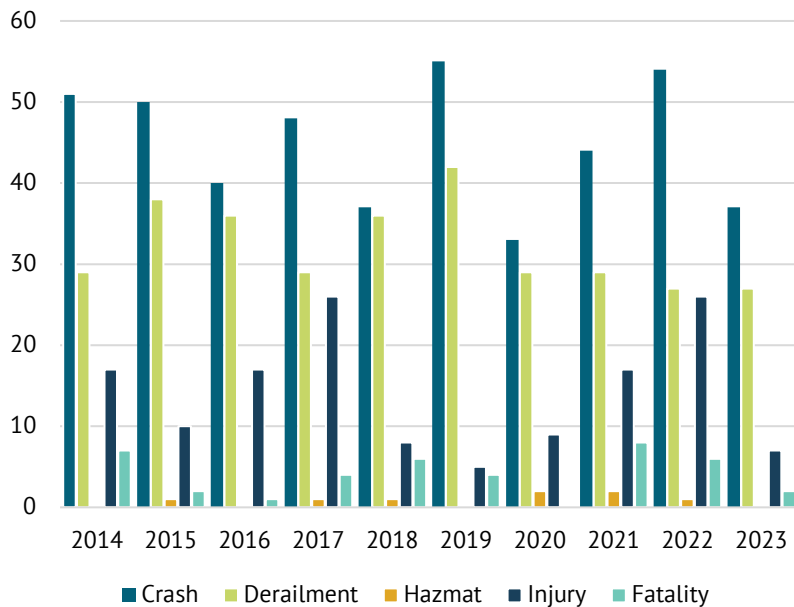


1. Safety
2. Community continuity and safety
3. Hazardous materials
4. Chokepoints
5. Freight opportunities and growth limitations
6. Passenger rail service

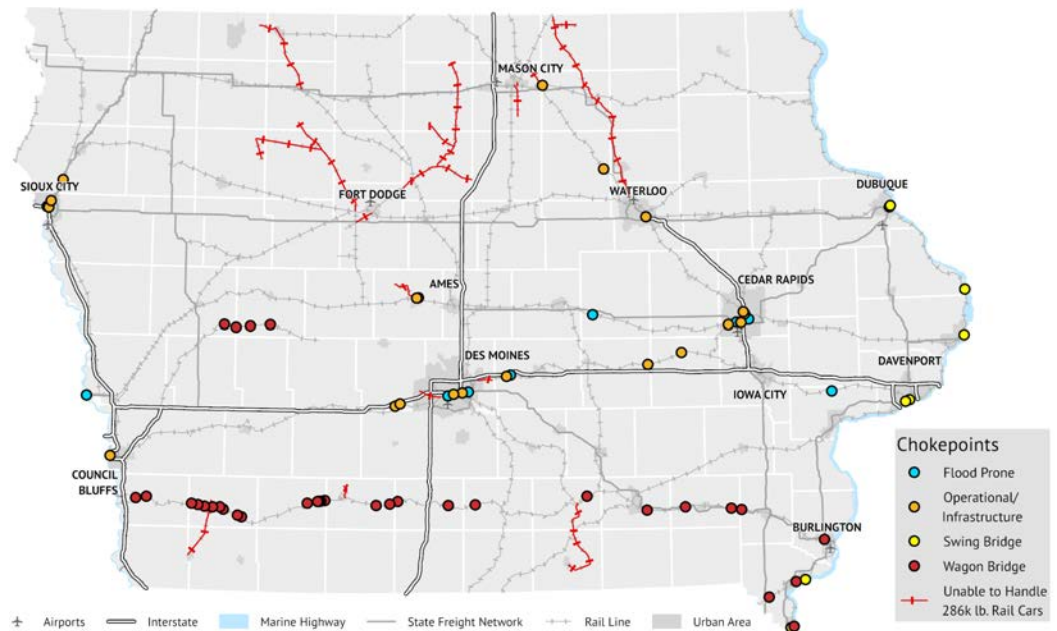
## Hazardous Materials Routes



## Iowa Railroad Safety Statistics



## Chokepoints



# Service and Investment Program

Includes listings of current and potential passenger rail and freight rail studies and projects categorized by short-term and long-term, as well as focused implementation strategies categorized by policy, implementation, and research and partnership and collaboration.




**Passenger Rail**

**Freight Rail**

	Short-range (1-4 years)	Long-range (5-20 years)
Passenger Rail	3 studies, \$500,000 2 projects, \$18,800,000	11 studies, \$10,725,000 10 projects, \$1,081,750,000
Freight Rail	12 studies, \$5,772,550 64 projects, \$591,963,355	3 studies, \$ TBD 64 projects, \$726,219,000


### Grade Crossing Safety

- Maintain focus on reducing grade crossing safety incidents.
- Pursue funding efforts for grade separation studies and construction projects.
- Consider methods to reduce railroad trespassing incidents.
- Seek transportation funding innovations.
- Advocate to minimize grade crossing accidents/incidents through increased enforcement.
- Promote Operation Lifesaver education material and campaigns.
- Increase public awareness of grade crossing safety.




### Train Length

- Increase awareness of emergency response and highway operations related to longer trains
- Provide information and research correlation of rail safety and train length
- Monitor Transportation Research Board’s Long Train Study for policy recommendations
- Consider methods to discuss railroad train lengths and operations in Iowa
- Partner with emergency services to understand impacts to emergency response related to increased train lengths
- Increased focused inspections on Hazmat rail lines



### Blocked Crossings

- Support local and railroad coordination to reduce blocked crossing conflicts.
- Expand awareness of Iowa Code 327G.32 to local jurisdictions.
- Increase awareness of FRA’s Blocked Crossing Reporting Tool.
- Review and monitor recommendations of 2006 FRA Report- Impact of Blocked Crossings on Emergency and First Responders.
- Consider and research new technology software to identify and communicate when a crossing is blocked to emergency management.
- Discuss priorities for multimodal transportation system.
- Facilitate discussions with local communities and railroad staff.
- Increase public and law enforcement awareness of RR Emergency Notification Signs (ENS) and procedures.



### Railroad Agreement Process

- Enhance agreement process to improve schedule and cost predictability.
- Modify DOT Design manual to better meet railroad grade separation guidelines and provide easy access to design information.
- Maintain the internally developed annual Railroad Safety Awareness Training for employees to encourage cross discipline learning and information sharing.
- Participate in FHWA’s Community of Interest (COI) which provides opportunities for members and railroads to network/share knowledge.
- Conduct monthly conference calls and annual in-person meeting to foster communication and coordination with rail partners.
- Consider methods to improve agreement review and process timelines.
- Post letting DOT engineering support.

