

**FAR PART 77
SURFACES**

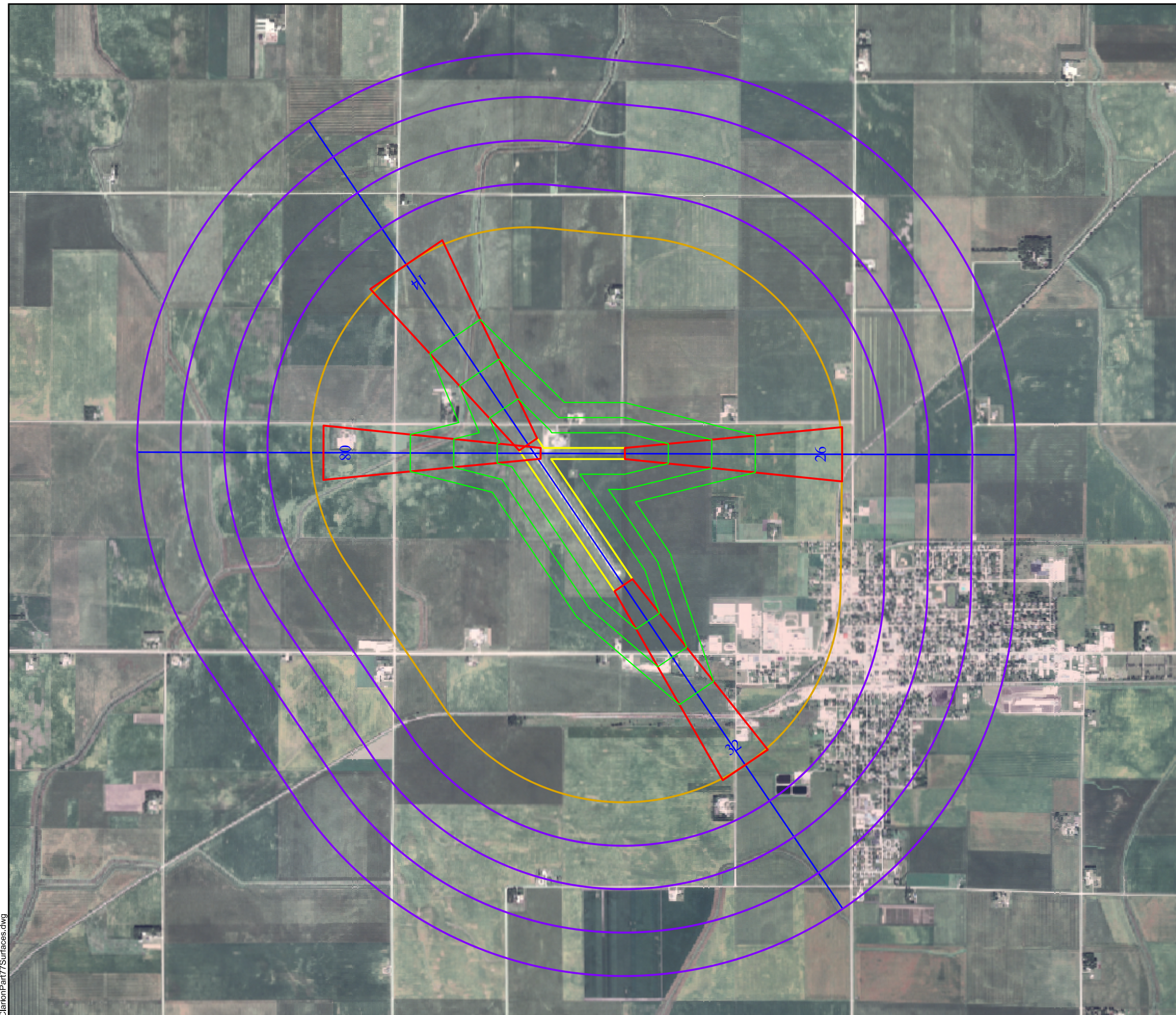
CLARION MUNICIPAL
AIRPORT

CLARION, IOWA

Prepared for:



Iowa Dept of Transportation
Office of Aviation
800 Lincoln Way
Ames, IA 50010
515-239-1691
www.iawings.com



- Runway Centerline
- Primary Surface
- Approach Surface
- Transitional Surface
- Horizontal Surface
- Conical Surface
- 1162'
Airport Reference
Point Elevation

This diagram is to be used for informational purposes only to provide a quick reference to aid airport managers and planners in understanding the extent of the FAR Part 77 surfaces as it relates to existing airport property. It is based on data contained in the FAA NASR database as of October 2007. Any use beyond the intended purpose is not authorized. For additional information or to determine planned airport development, contact the local airport sponsor. For further information regarding FAR Part 77 surfaces, consult <http://oeaaa.faa.gov/oeaaa/external/portal.jsp>.



Prepared by:

