

**FAR PART 77  
SURFACES**

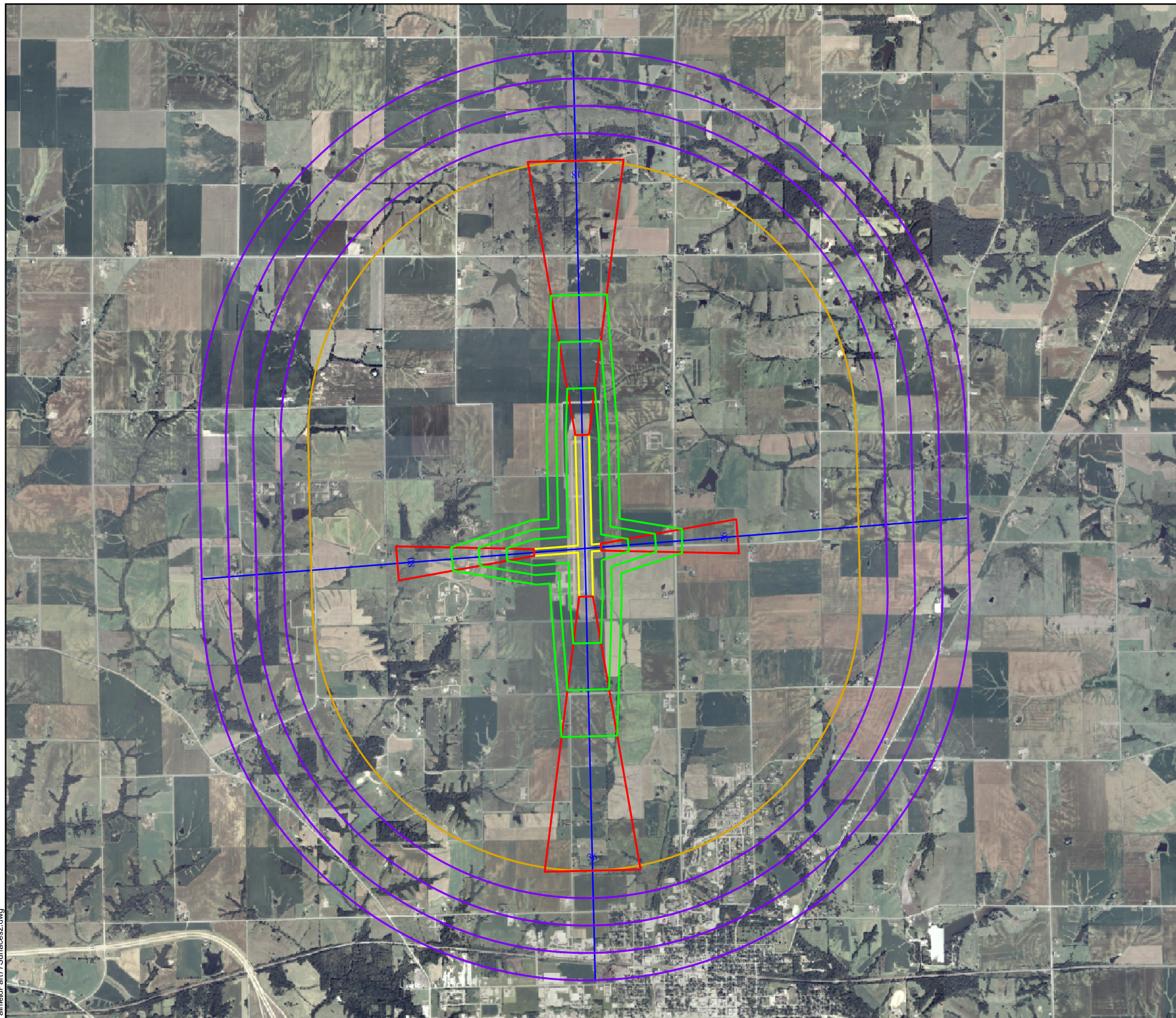
FAIRFIELD MUNICIPAL  
AIRPORT

FAIRFIELD, IOWA

Prepared for:



Iowa Dept of Transportation  
Office of Aviation  
800 Lincoln Way  
Ames, IA 50010  
515-239-1691  
www.iawings.com



- Runway Centerline
- Primary Surface
- Approach Surface
- Transitional Surface
- Horizontal Surface
- Conical Surface
- 799' Airport Reference Point Elevation

This diagram is to be used for informational purposes only to provide a quick reference to aid airport managers and planners in understanding the extent of the FAR Part 77 surfaces as it relates to existing airport property. It is based on data contained in the FAA NASR database as of October 2007. Any use beyond the intended purpose is not authorized. For additional information or to determine planned airport development, contact the local airport sponsor. For further information regarding FAR Part 77 surfaces, consult <http://oeaaa.faa.gov/oeaaa/external/portal.jsp>.



Prepared by:

