

RUNWAY END COORDINATES - NAD 83				
	RUNWAY 12		RUNWAY 30	
	EXISTING	ULTIMATE	EXISTING	ULTIMATE
LATITUDE	42° 44' 12.67354" N	42° 44' 12.67354" N	42° 43' 58.17703" N	42° 43' 58.17703" N
LONGITUDE	94° 15' 04.27404" W	94° 15' 04.27404" W	94° 14' 23.00640" W	94° 14' 23.00640" W

MODIFICATIONS TO AIRPORT DESIGN STANDARDS			
APPROVAL DATE	APSPACE CASE NO.	STANDARD MODIFIED	DESCRIPTION
NONE REQUIRED			

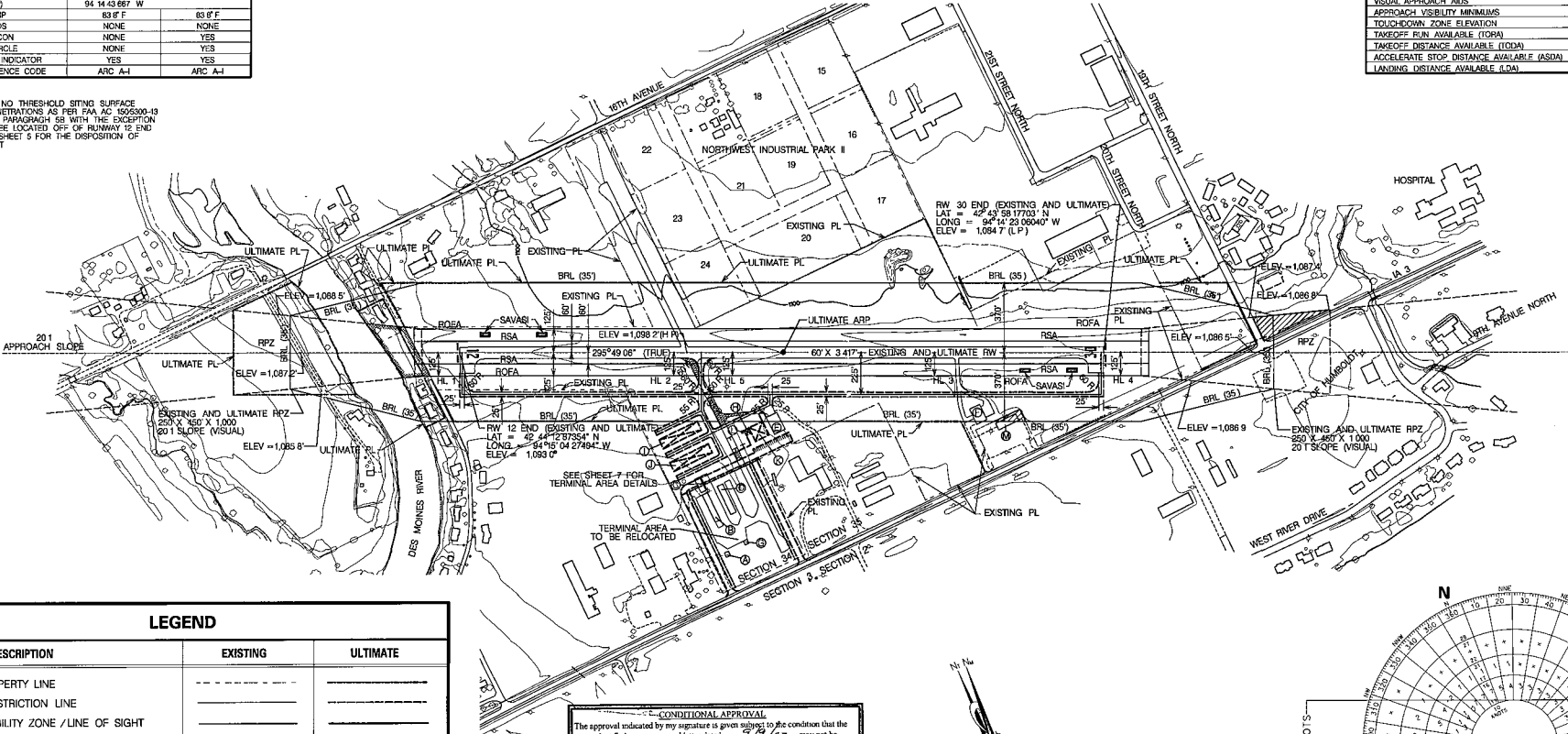
HOLDING POSITION TABLE		
HOLDING POSITION	HOLD TYPE	DISTANCE
HL 1	RUNWAY	125'
HL 2	RUNWAY	125'
HL 3	RUNWAY	125'
HL 4	RUNWAY	125'
HL 5	RUNWAY	125'

AIRPORT DATA		
	EXISTING	ULTIMATE
AIRPORT ELEVATION	1,099.2 (MSL)	1,099.2 (MSL)
AIRPORT REFERENCE POINT (ARP)	42° 44' 06.626" N 94° 14' 43.667" W	
MEAN MAX TEMP	83°F F	83°F F
AIRPORT NAVAIDS	NONE	NONE
ROTATING BEACON	NONE	YES
SEGMENTED CIRCLE	NONE	YES
LIGHTED WIND INDICATOR	YES	YES
AIRPORT REFERENCE CODE	ARC A-1	ARC A-1

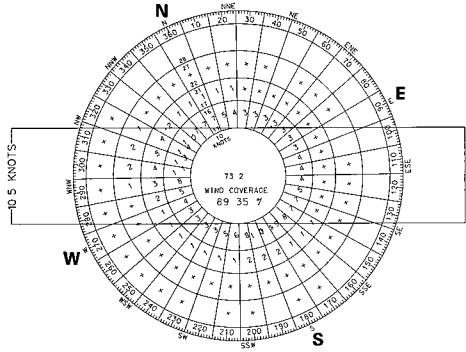
NOTES
 1 THERE ARE NO THRESHOLD SITING SURFACE OBJECT PENETRATIONS AS PER FAA AD 1505300-13 APPENDIX 2 PARAGRAPH 58 WITH THE DISPOSITION OF ONE THREE LOCATED OFF OF RUNWAY 12 END REFER TO SHEET 5 FOR THE DISPOSITION OF THIS OBJECT

BUILDING IDENTIFICATION					
ID	DESCRIPTION	TOP ELEVATION	PART 77 ELEVATION	CLEARANCE (PENETRATION)	DISPOSITION
A	TERMINAL BUILDING	1,163.9'	1,233.3'	126.4'	TO BE REMOVED
B	7 STALL TEE HANGAR	1,104.2'	1,197.5'	83.3'	TO BE REMOVED
C	3 STALL TEE HANGAR	1,103.6'	1,175.3'	71.7'	TO BE REMOVED
D	5 STALL TEE HANGAR	1,104.8'	1,181.1'	76.3'	TO BE REMOVED
E	CONVENTIONAL HANGAR	1,116.0'	1,128.2'	12.2'	-
F	3 STALL HANGAR	1,106.2'	1,111.5'	5.3'	-
G	FUEL FACILITY	1,099.0'	1,221.6'	122.6'	TO BE RELOCATED
H	ULTIMATE TERMINAL BUILDING	FUTURE	1,166.1'	-	ULTIMATE
I	ULTIMATE 10 STALL TEE HANGAR	FUTURE	1,127.5'	-	ULTIMATE
J	ULTIMATE 10 STALL TEE HANGAR	FUTURE	1,144.6'	-	ULTIMATE
K	ULTIMATE CONV HANGAR 6,400 SF	FUTURE	1,138.9'	-	ULTIMATE
L	RELOCATED FUEL FACILITY	FUTURE	1,168.9'	-	ULTIMATE
M	PRIVATE - COMMERCIAL	EXISTING	1,103.3'	10.0'	NONE

ITEM	RUNWAY 12/30		
	EXISTING	ULTIMATE	A-1
APPROACH CATEGORY / DESIGN GROUP	A-1	A-1	A-1
RUNWAY LENGTH / WIDTH	3,417 / 80	3,417 / 80	3,417 / 80
RUNWAY MARKINGS	BASIC	BASIC	BASIC
RUNWAY LIGHTING	MIFL	MIFL	MIFL
PAVEMENT MATERIAL	ASPHALT	ASPHALT	ASPHALT
PAVEMENT STRENGTH (000)	4,000 (SMA)	12,500 (SMA)	12,500 (SMA)
RUNWAY SAFETY AREA (RSA) LENGTH	3,897	3,897	3,897
RUNWAY SAFETY AREA (RSA) WIDTH	120	120	120
OBJECT FREE AREA (OFA) LENGTH	3,897	3,897	3,897
OBJECT FREE AREA (OFA) WIDTH	250	250	250
OBSTACLE FREE ZONE (OFZ) LENGTH	3,817	3,817	3,817
OBSTACLE FREE ZONE (OFZ) WIDTH	250	250	250
TAXIWAY WIDTH	30	35	35
TAXIWAY LIGHTING	MITL	MITL	MITL
APPROACH SURFACE SLOPE	20.1	30	12
ELECTROMAGNETIC ARES	NONE	NONE	20.1
VISUAL APPROACH AIDS	SAVASI	SAVASI REIL	SAVASI
APPROACH VISIBILITY MINIMUMS	VISUAL	VISUAL	VISUAL
TOUCHDOWN ZONE ELEVATION	1,098.2	1,098.2	1,098.2
TAKEOFF PLN AVAILABLE (TOPA)	3,417	3,417	3,417
TAKEOFF DISTANCE AVAILABLE (TODA)	3,417	3,417	3,417
ACCELERATE STOP DISTANCE AVAILABLE (ASDA)	3,417	3,417	3,417
LANDING DISTANCE AVAILABLE (LDA)	3,417	3,417	3,417



WIND DATA		
CROSSWINDS	RWY	12/30
10.5 KNOTS		89.95
SOURCE DES MOINES INTERNATIONAL AIRPORT PERIOD 1982-2001		



LEGEND		
DESCRIPTION	EXISTING	ULTIMATE
AIRPORT PROPERTY LINE	---	---
BUILDING RESTRICTION LINE	---	---
RUNWAY VISIBILITY ZONE / LINE OF SIGHT	---	---
RUNWAY PROTECTION ZONE	---	---
RUNWAY PROTECTION ZONE EASEMENT	▨	▨
RUNWAY SAFETY AREA AND OBJECT FREE AREA	▨	▨
BUILDING - STRUCTURES	▭	▭
PRECISION APPROACH PATH INDICATOR (PAPI)	▲	▲
RUNWAY END IDENTIFIER LIGHTS (REIL)	▲	▲
THRESHOLD LIGHTS	●	○
FENCE	-x-x-	-x-x-
PAVEMENT REMOVAL	▨	▨

CONDITIONAL APPROVAL
 The approval indicated by my signature is given subject to the condition that the items identified in our approval letter dated 9/9/02 may not be undertaken without prior written environmental approval by the Federal Aviation Administration. This approval action does not imply any commitment for Federal funding, or approval of future structures requiring notice under FAR Part 77.

[Signature] 9/9/02
 Supervisor Planning Section
 FAA Central Region

APPROVED
[Signature] 8-20-02
 CITY OF HUMBOLDT DATE

