

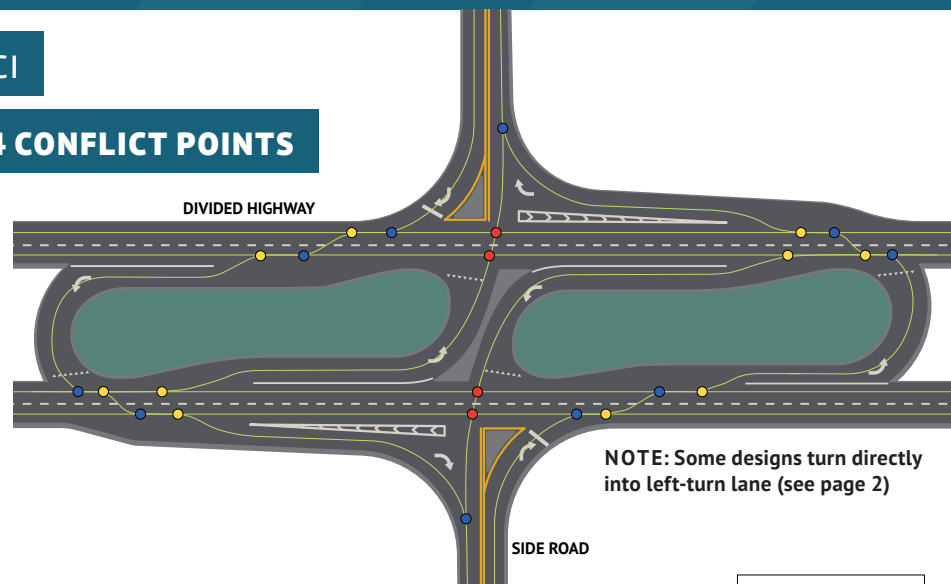
# REDUCED CONFLICT INTERSECTIONS

## WHAT IS A REDUCED CONFLICT INTERSECTION?

- A **Reduced Conflict Intersection (RCI)** directs side-road traffic turning left or crossing multiple lanes of a divided highway to a secondary U-turn intersection a short distance away.
- RCIs are primarily used at intersections on four-lane divided highways with high traffic volumes and speeds when a traffic signal or other intersection type is not suitable.
- RCIs are designed for all vehicle types, including trucks and farm vehicles.

RCI

24 CONFLICT POINTS



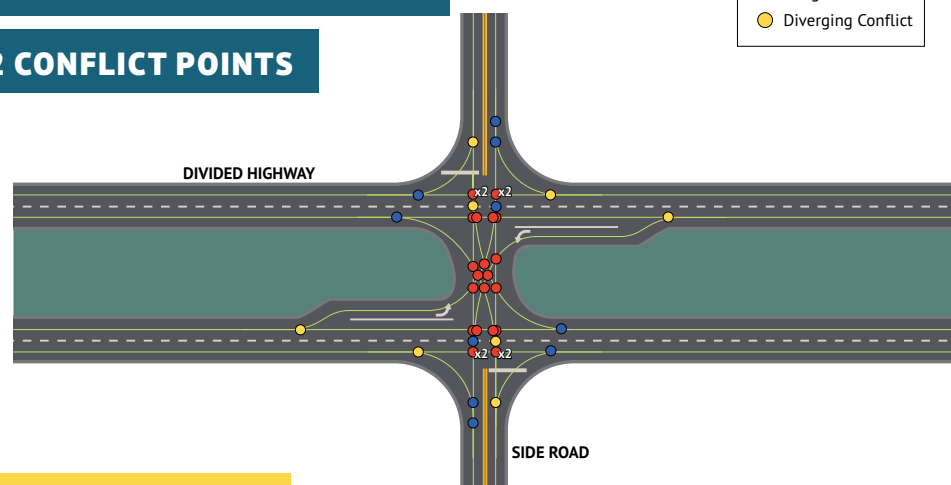
NOTE: Some designs turn directly into left-turn lane (see page 2)

SIDE ROAD

- Traffic Flow
- Crossing Conflict
- Merge Conflict
- Diverging Conflict

TRADITIONAL INTERSECTION

42 CONFLICT POINTS



SIDE ROAD

## WHY ARE THEY USED?

- RCIs reduce the number of points where vehicles can collide with other vehicles, often called conflict points.
- A typical four-lane divided highway intersection has 42 possible vehicle conflict points, while reduced conflict intersections have 24 or fewer.
- RCIs improve mobility and greatly reduce the number of severe broadside crashes that can occur when drivers must cross busy divided highways.
- The RCI separates turning movements and simplifies decision-making for drivers because they only need to yield to one direction of traffic at a time, minimizing the potential for severe crashes.

US 20 & US 59 INTERSECTIONS - HOLSTEIN, IA

[IOWADOT.GOV/TRAFFIC/REDUCEDCONFLICTINTERSECTION](http://IOWADOT.GOV/TRAFFIC/REDUCEDCONFLICTINTERSECTION)

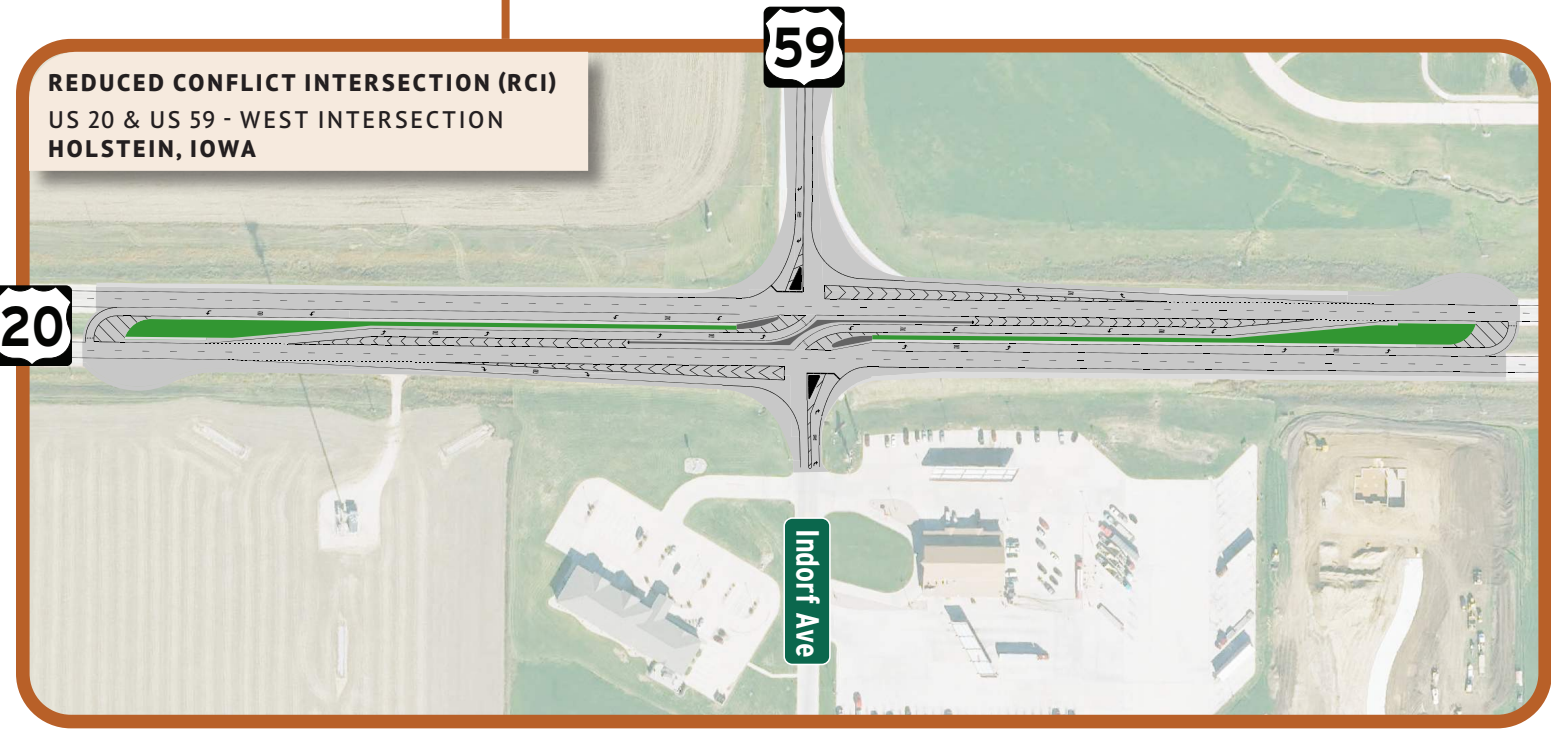
### CONTACT

Sarah Tracy, Iowa DOT District 3 Transportation Planner • 712-276-1451 • [Sarah.Tracy@iowadot.us](mailto:Sarah.Tracy@iowadot.us)

IOWA | DOT



SCAN ME TO COMMENT



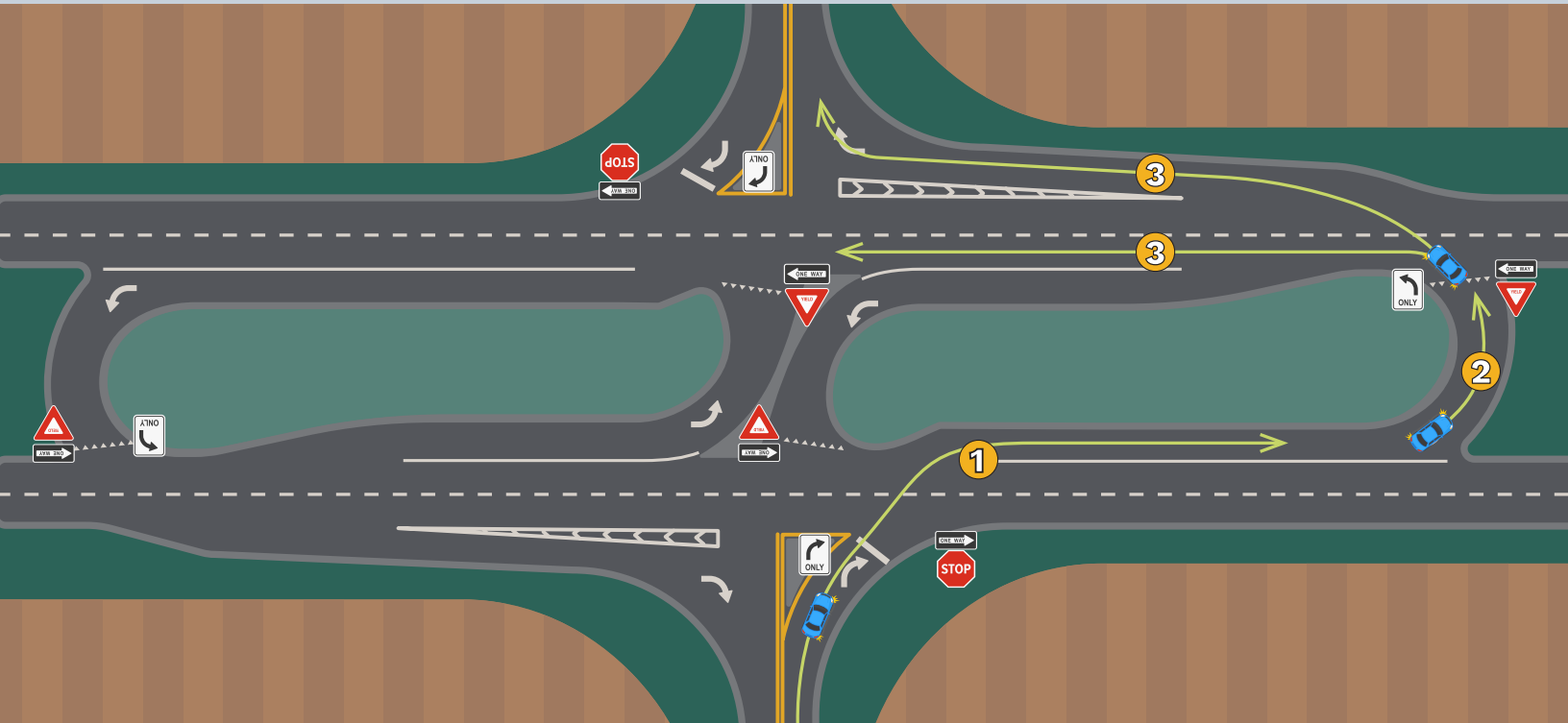
# HOW DO I DRIVE THROUGH A REDUCED CONFLICT INTERSECTION?

## On the Divided Highway:

Drivers on the divided highway travel through or turn left or right at the intersection like they would at a traditional intersection.

## On the Side Road:

Drivers on a side road wanting to turn left or cross the divided highway follow the steps below.



**1** Turn right onto the divided highway (US 20). Through and left-turn traffic turns directly into left-turn lane.

**2** Make a left turn at the designated U-turn median opening.

**3** Continue through the main intersection to complete the left turn, or make a right turn at the intersection to continue traveling straight on the side road.

## BENEFITS



### Improved Safety

RCIs can **reduce fatal and serious injury crashes by 63% compared to typical divided highway intersection**. RCIs do not create unexpected stopping like a traffic signal leading to an increase in high-speed rear-end crashes.



### Faster to Build

RCIs can be designed and built in about one year. Interchanges typically take two to five years to build and are not practical at all locations. More than 200 similar RCIs have been built in neighboring states including Minnesota, Wisconsin, Nebraska, Missouri, Illinois, and Indiana.



### Lower Cost

RCIs are often less expensive than constructing and maintaining an intersection with a traffic signal, and they require only a fraction of the cost and land needed to build an interchange.

## PROJECT SCHEDULE US 20 & US 59 Reduced Conflict Intersections - Holstein, IA

Design  
2026

Letting  
Fall 2027

Construction Begins  
Spring 2028

Construction Ends  
Fall 2028