

Creating Incident Bypass Signs in MicroStation

Traffic and Safety Manual

Chapter 20

Instructions

Originally Issued: 05-01-18

Revised: 07-01-18

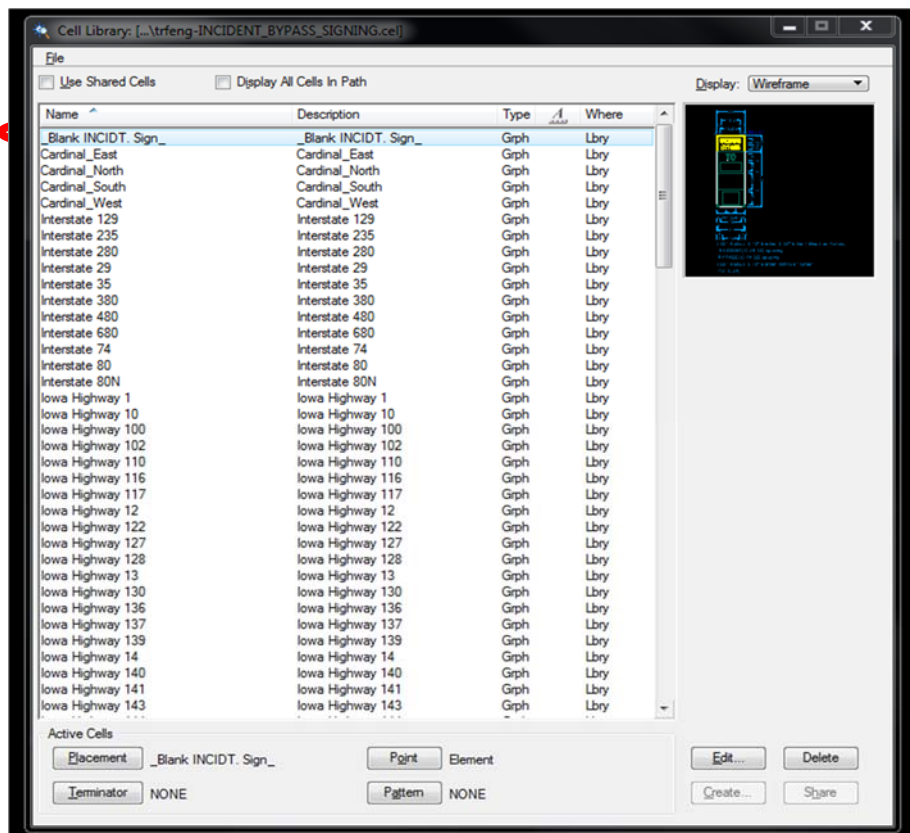
Place Blank Incident Bypass Sign

To create an Incident Bypass Sign, it is necessary to first place a blank Incident Bypass Sign.

In the trfeng-INCIDENT_BYPASS_SIGNING cell library

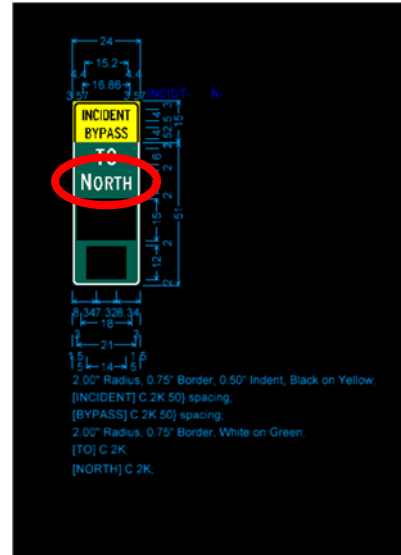
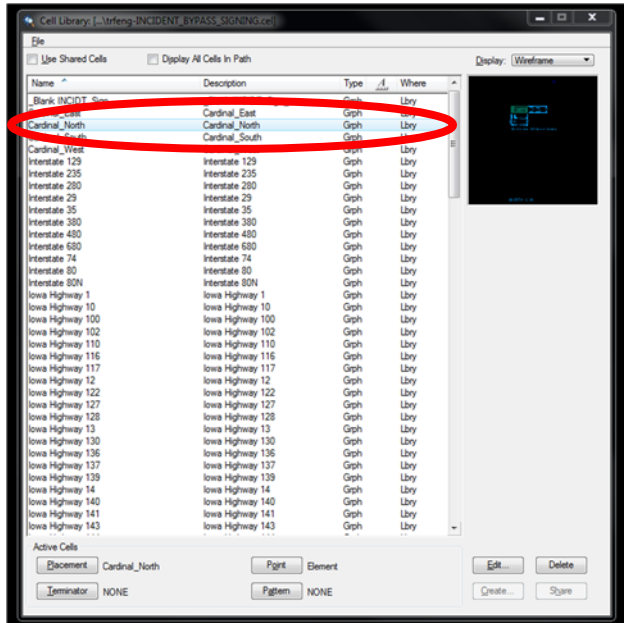
(pw:\projectwise.dot.int.lan:PWMain\Documents\Standards\TrafficAndSafety\Microstation\Cells\trfeng-INCIDENT_BYPASS_SIGNING.cel), select the _Blank INCIDT. Sign_ cell and place it where you need it.

This blank sign is where the separate Cardinal Direction, Route shield, and Directional Arrow components of the Incident Bypass Sign will be placed. These components can be placed in any order.



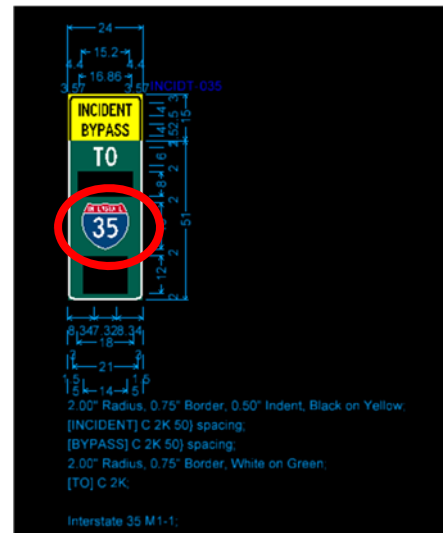
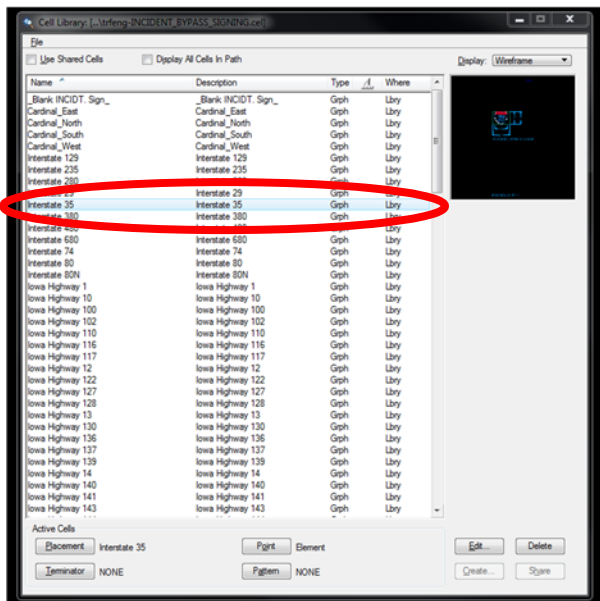
Place Cardinal direction

In the trfeng-INCIDENT_BYPASS_SIGNING cell library
[\(pw:\projectwise.dot.int.lan:PWMain\Documents\Standards\TrafficAndSafety\Microstation\Cells\trfeng-INCIDENT_BYPASS_SIGNING.cel\)](http://pw:\projectwise.dot.int.lan:PWMain\Documents\Standards\TrafficAndSafety\Microstation\Cells\trfeng-INCIDENT_BYPASS_SIGNING.cel) , select the North cell (or another cardinal direction cell as needed) and place in the top empty space on the _Blank INCIDT. Sign_ cell. Place by clicking the top left corner of the empty space. The size of the cardinal direction cell should match up exactly with the empty space.



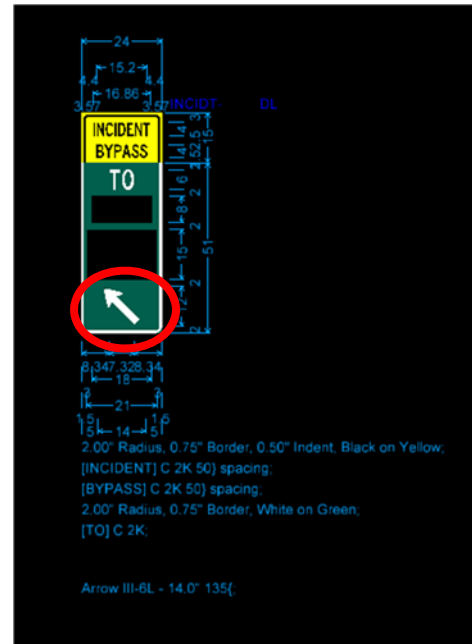
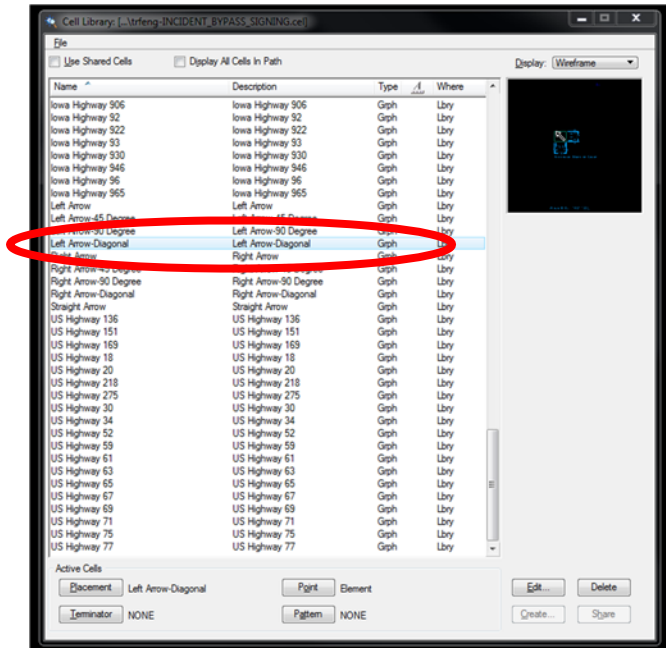
Place Route Shield

In the trfeng-INCIDENT_BYPASS_SIGNING cell library
[\(pw:\projectwise.dot.int.lan:PWMain\Documents\Standards\TrafficAndSafety\Microstation\Cells\trfeng-INCIDENT_BYPASS_SIGNING.cel\)](http://pw:\projectwise.dot.int.lan:PWMain\Documents\Standards\TrafficAndSafety\Microstation\Cells\trfeng-INCIDENT_BYPASS_SIGNING.cel) , select the Interstate 35 cell (or another Route Shield cell as needed) and place in the middle empty space on the _Blank INCIDT. Sign_ cell. Place by clicking the top left corner of the empty space. The size of the route shield cell should match up exactly with the empty space.



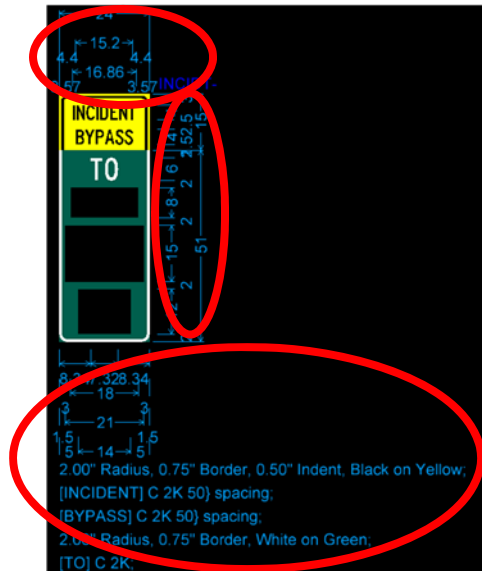
Place Directional Arrow

In the trfeng-INCIDENT_BYPASS_SIGNING cell library (pw:\projectwise.dot.int.lan:PWMain\Documents\Standards\TrafficAndSafety\Microstation\Cells\trfeng-INCIDENT_BYPASS_SIGNING.cel), select the Diagonal Left Arrow cell (or another directional arrow cell as needed) and place in the bottom empty space on the _Blank INCIDT. Sign_ cell. Place by clicking the top left corner of the empty space. The size of the directional arrow cell should match up exactly with the empty space.

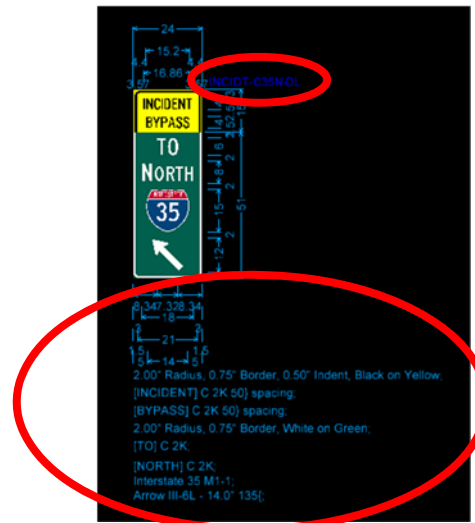
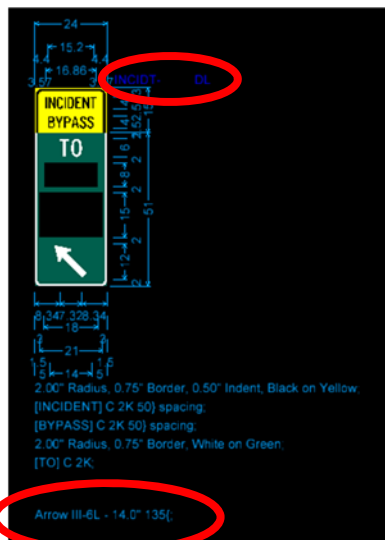


Sign Details

In each of the components of the Incident Bypass Sign and the blank Incident Bypass Sign, there are levels dedicated to sign details.



When these components are placed into the blank Incident Bypass sign, these Sign details of the components should line up with the sign details of the blank Incident Bypass Sign. This is so that when the sign is completed, all details of the sign will be shown.



Incident Bypass Component Details

For each Incident Bypass Component, there are sign details specifically for that component. These sign details are located on level `trf_sign_Details_Dimensions_2` and are mainly used for when sheeting. This level should be turned off when presenting the entire Incident Bypass Sign with all the components attached.

