



IOWA DEPARTMENT OF TRANSPORTATION LEVEL OF SERVICE

Level of Service (LOS)

A measure of the quality of the driving experience on a roadway during peak periods of use, such as morning and evening commute times. We measure travel speed, travel time, ease of maneuvering, traffic interruptions, and the comfort or convenience of the driving experience.

ACCESS VS. MOBILITY

ACCESS

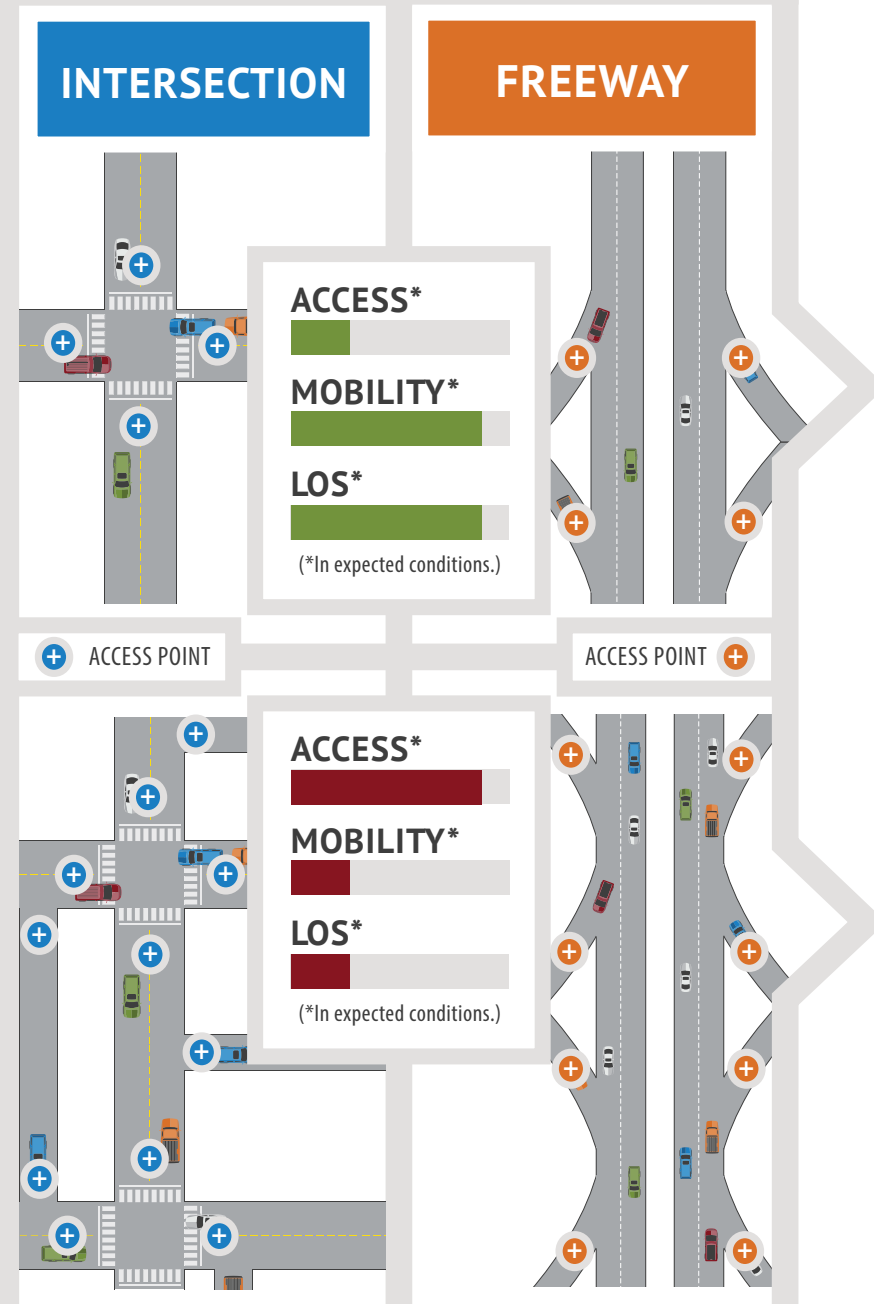
Places where vehicles get onto or off of any given roadway.

Having access is a necessity for all roadways, but the number of access points for vehicles differs greatly between freeways and local public intersections and also has a significant impact on mobility.

MOBILITY

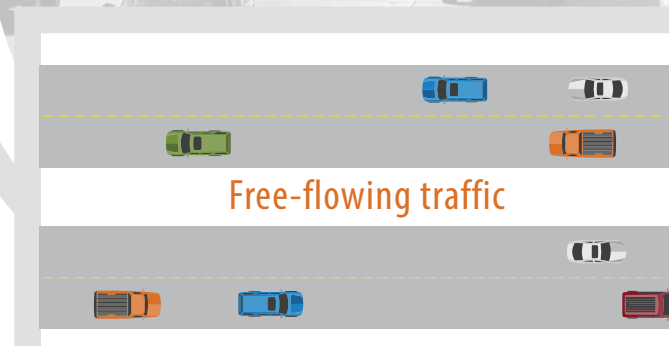
How comfortably and efficiently a vehicle can get from one place to another without interruption.

When mobility is high, the driver has optimal driving comfort during a timely trip – equating good mobility with high level of service.



FREEWAY

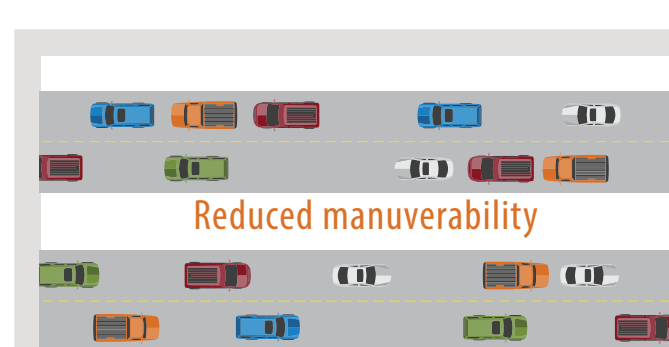
MEASURED IN THE DENSITY OF TRAFFIC



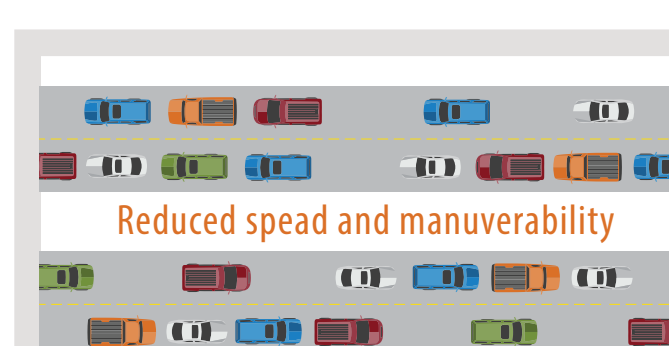
Free-flowing traffic



Reasonably free-flowing traffic



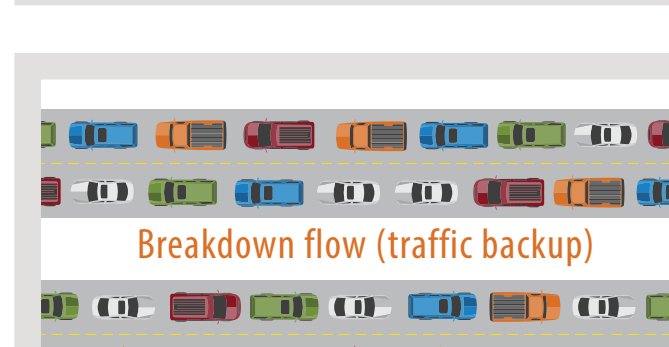
Reduced maneuverability



Reduced speed and maneuverability



Reduced speed and no maneuverability



Breakdown flow (traffic backup)

LOS
GRADE

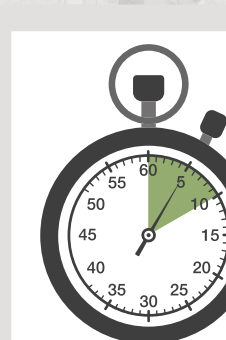


A

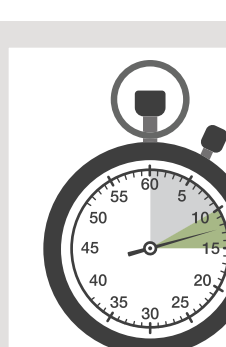


INTERSECTION

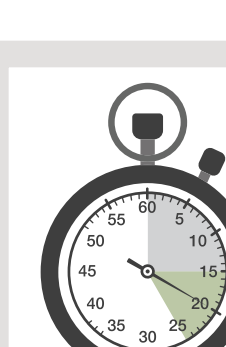
MEASURED IN THE TIME SPENT STOPPED AT AN INTERSECTION



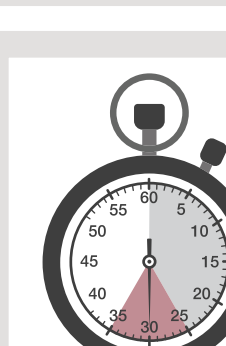
0-10
seconds



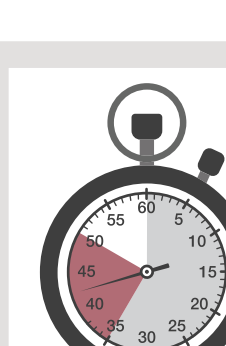
10-15
seconds



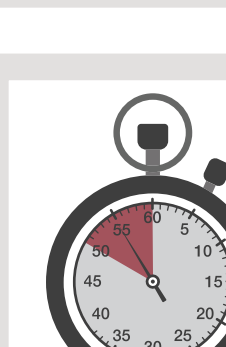
15-25
seconds



25-35
seconds



35-50
seconds



>50
seconds

HIGH
MOBILITY

LESS ACCESS

MORE ACCESS

LOW
MOBILITY