



Iowa Mississippi River Parkway Commission
IOWA GREAT RIVER ROAD
INTRINSIC RESOURCES INVENTORY

JACKSON COUNTY MAP SET

May 10, 2015



Prepared by:



DAVID L. DAHLQUIST ASSOCIATES, LLC

The 2015 Corridor Management Plan Library for the Iowa Great River Road

A comprehensive collection of data, research findings, reports, maps, and presentations which provide additional detail and support for the 2015 Corridor Management Plan of the Iowa Great River Road. Each document is referenced with a lettered icon and title.

Document files can be downloaded at www.iowadot.gov/iowasbyways/IAGRR-CMP.html and www.ddaforum.com/DocumentLibrary.aspx.



Iowa Great River Road Designated Route Update

Map atlases for the ten Iowa Great River Road counties illustrating the routing of the Byway.



Summary Report of Representative Intrinsic Qualities and Resources, Tabulation and Map Sets

Report, tabulations and map county atlases of the intrinsic resources of the Iowa Great River Road.



Condition of the Road Report

A review of the existing conditions associated with the Iowa Great Road using 14 key topics recommended by the Federal Highway Administration.



Iowa Great River Road Route Traffic Data and Safety Report

A tabular presentation of traffic data and safety indicators for segments of the Iowa Great River Road prepared by the Iowa Department of Transportation.



Iowa Great River Road Document Library

An extensive listing of a wide variety of reference documents pertaining to the Mississippi River as well as the National and Iowa Great River Road.



Report of Spring 2012 Stakeholder Meetings

A complete report of the production, results, and public direction provided during the Spring 2012 Stakeholder Meetings.



The 2013 Iowa Great River Road Visitor Survey

Summary report, detailed result tabulation, and survey instrument for the 2013 Iowa Great River Road Visitor Survey.



The 2013 Iowa Great River Road Resident Survey

Summary report, detailed result tabulation, and survey instrument for the 2013 Iowa Great River Road Resident Survey.



Report of Spring 2014 Stakeholder Meetings

A complete report of the production, results, and public direction provided during the Spring 2014 Stakeholder Meetings.



Iowa Mississippi River Parkway Commission Stakeholder List

A tabular presentation of the contact listing for the Iowa Mississippi River Parkway Commission current as of January 2015. (Available upon request to the Commission)



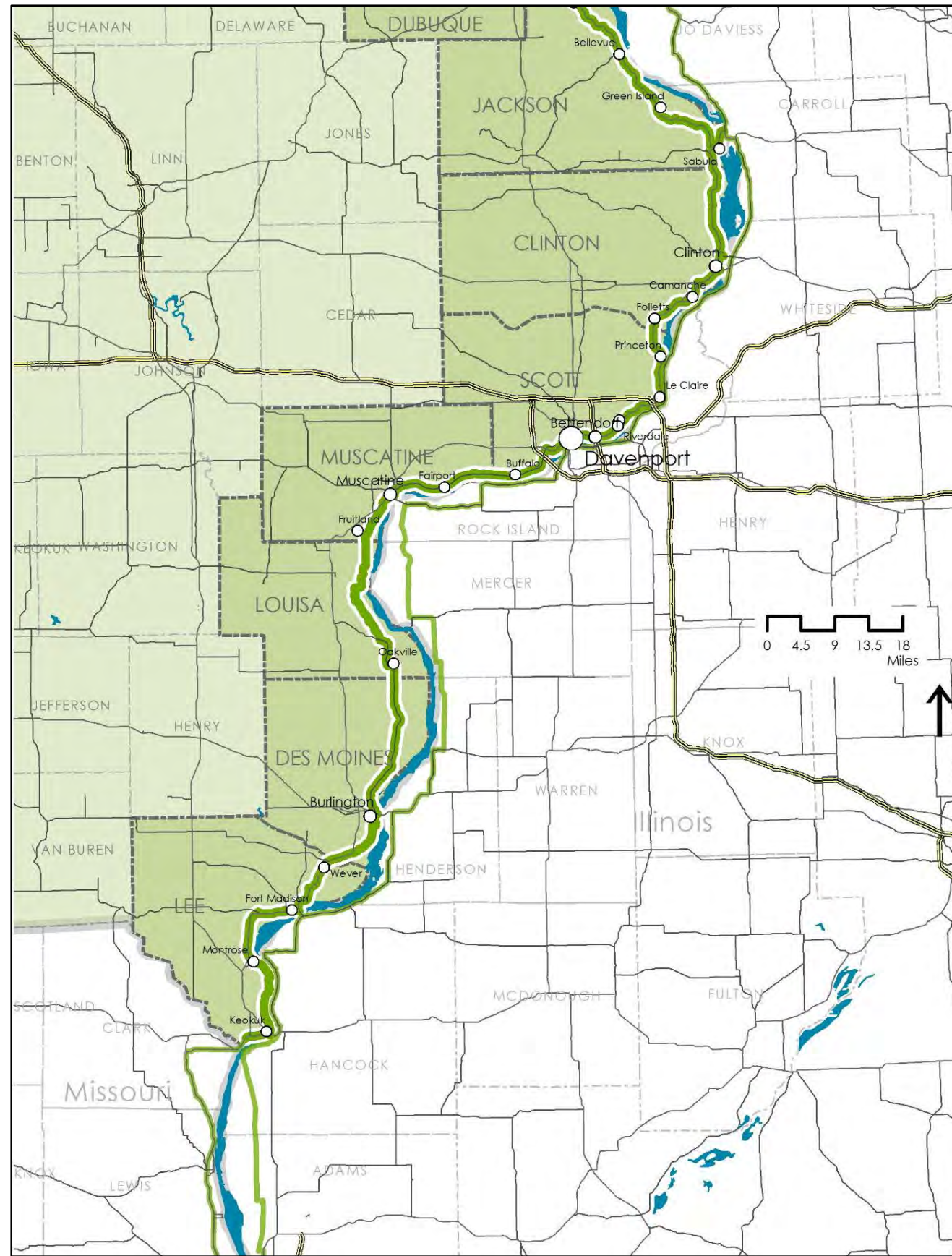
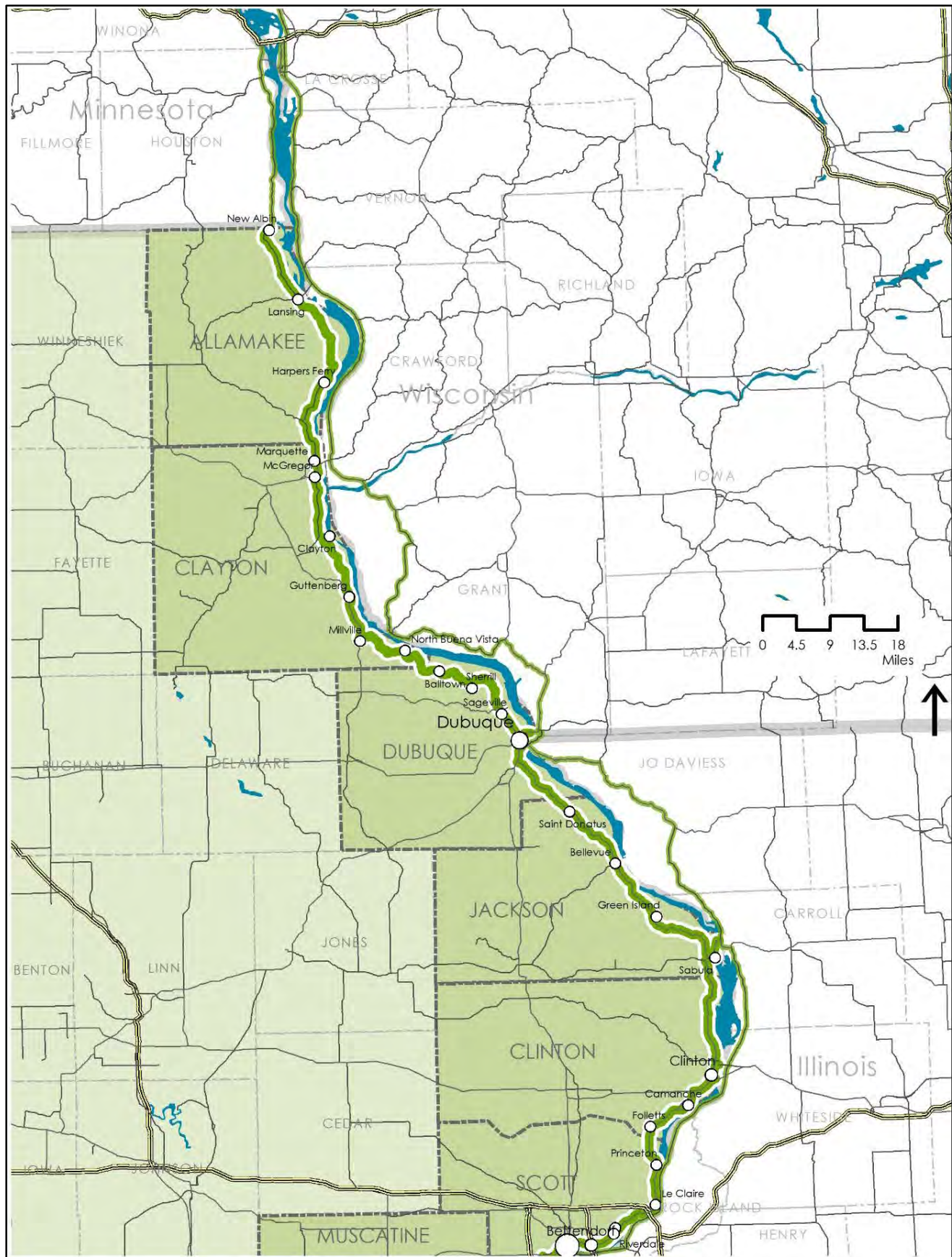
Core Management Directions, Actions, and Financial Considerations

Detailed background and descriptions of Actions and financial considerations supporting the Core Management Directions of the Iowa Great River Road.



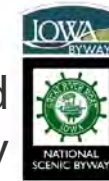
Great River Road Interpretive Plan and Tool Kit

A comprehensive guide for themes and stories for interpreting the entire Great River Road.





Iowa Great River Road National Scenic Byway



Intrinsic Resources

DAVID L. DAHLQUIST ASSOCIATES, LLC

Origin of geo-data: Iowa DOT, ESRI, Inc., and David L. Dahlquist Associates.

The opinions, findings, and conclusions expressed in this publication are those of the author and not necessarily those of the Iowa Department of Transportation or of the Federal Highway Administration.




This document issued on:
Sunday, May 10, 2015

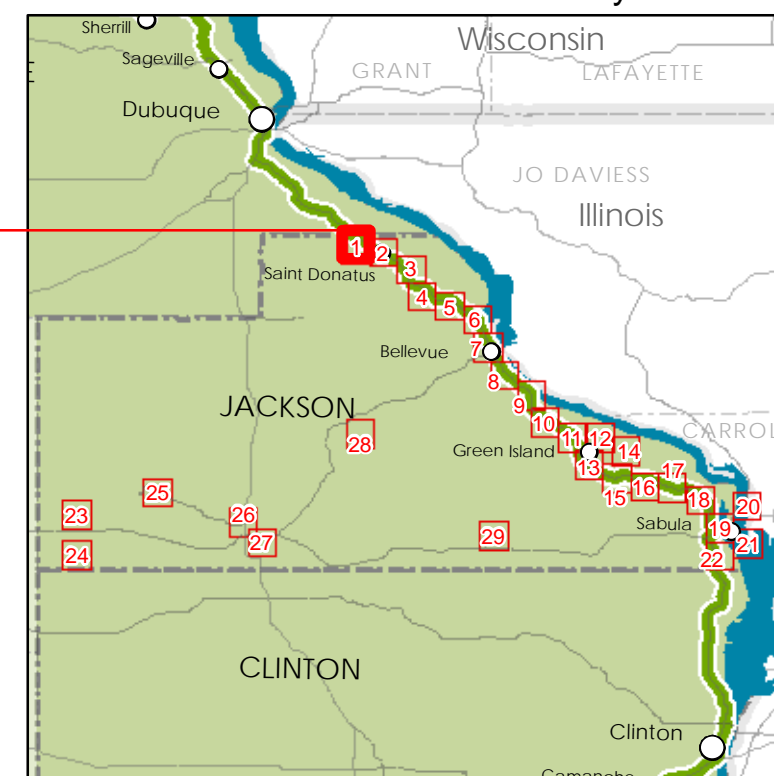
County
Abbreviations

AL Allamakee
CY Clayton
DU Dubuque
JA Jackson
CL Clinton
SC Scott
MU Muscatine
LO Louisa
DM Des Moines
LE Lee

Legend

- Sc Scenic Resource
- Na Natural Resource
- Hi Historical Resource
- Ar Archeological Resource
- Cu Cultural Resource
- Re Recreational Resource
-  GRR Interpretive Center
- In Interpretative Communications
- VC Visitor Center
- ◆ MR Mississippi River Access or View
- SA Supplemental Attraction
- Iowa Great River Road

County Location



State Location



Jackson County
Sheet JA 1 of 29



Iowa Great River Road National Scenic Byway



Intrinsic Resources

DAVID L. DAHLQUIST ASSOCIATES, LLC

Origin of geo-data: Iowa DOT, ESRI, Inc., and David L. Dahlquist Associates.

The opinions, findings, and conclusions expressed in this publication are those of the author and not necessarily those of the Iowa Department of Transportation or of the Federal Highway Administration.



Legend

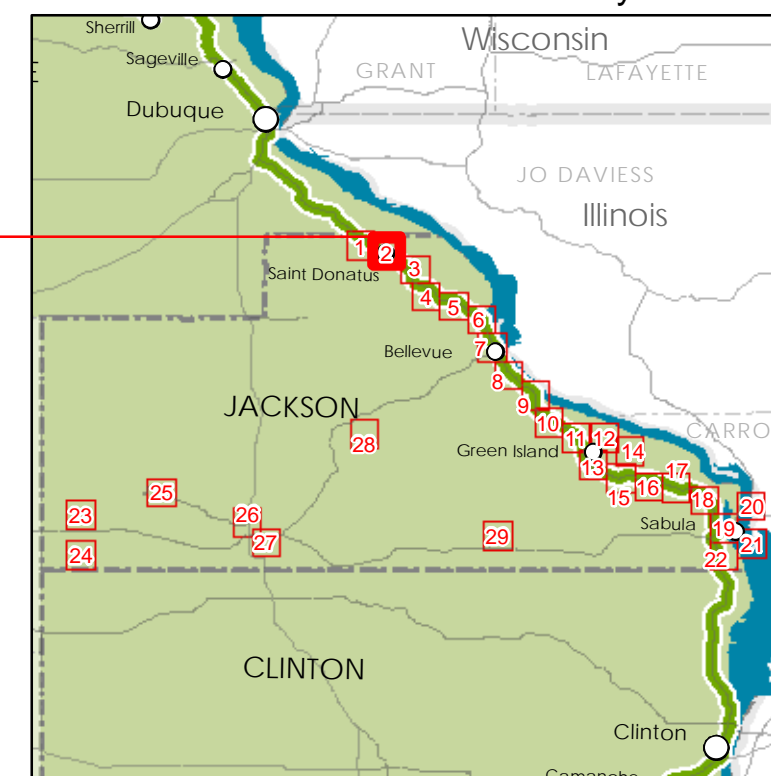
- Sc Scenic Resource
- Na Natural Resource
- Hi Historical Resource
- Ar Archeological Resource
- Cu Cultural Resource
- Re Recreational Resource
- GRR Interpretive Center
- In Interpretative Communications
- VC Visitor Center
- MR Mississippi River Access or View
- SA Supplemental Attraction
- Iowa Great River Road

This document issued on:
Sunday, May 10, 2015

County Abbreviations

- AL Allamakee
- CY Clayton
- DU Dubuque
- JA Jackson
- CL Clinton
- SC Scott
- MU Muscatine
- LO Louisa
- DM Des Moines
- LE Lee

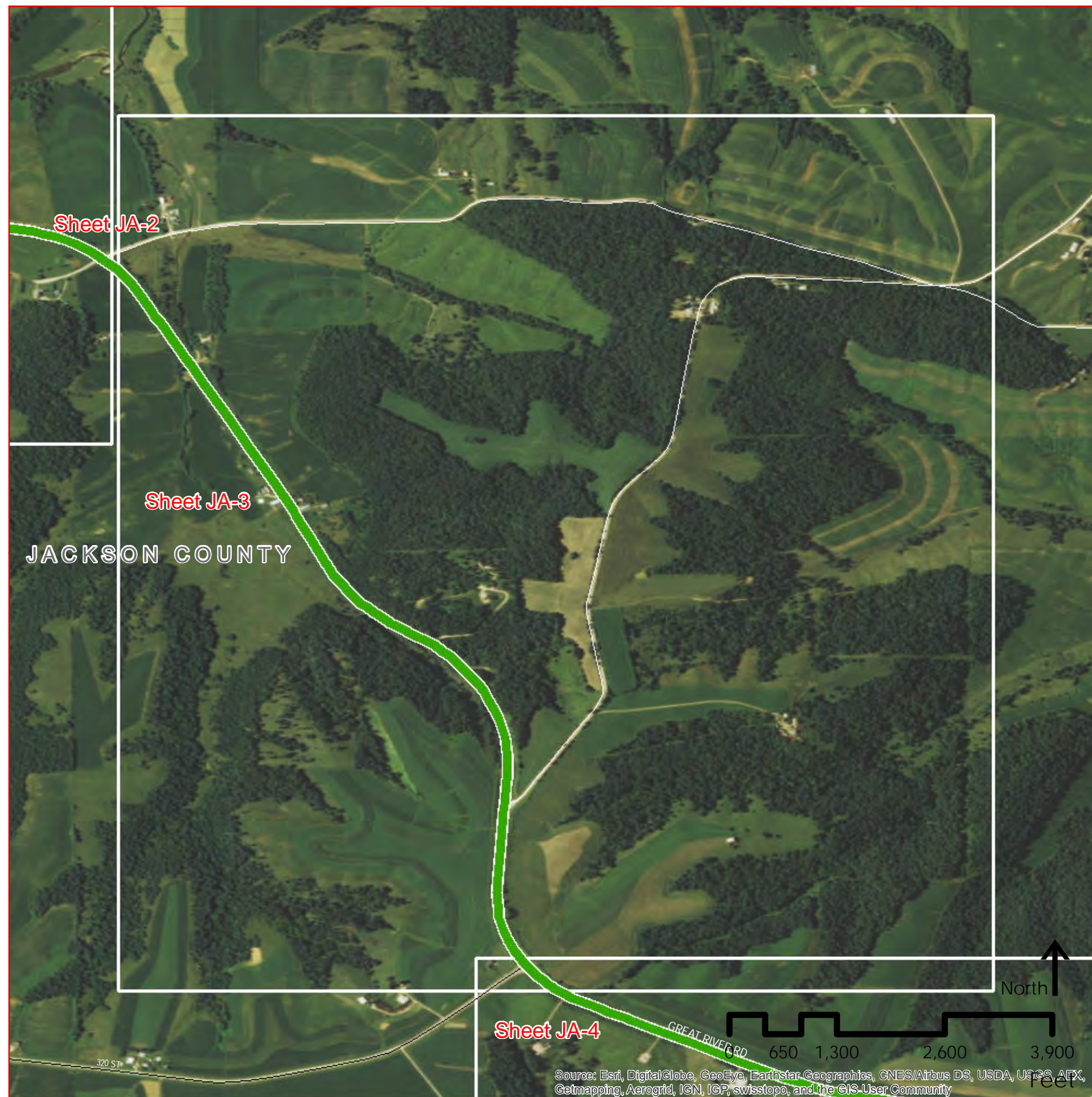
County Location



State Location

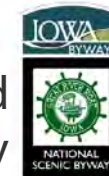


Jackson County
Sheet JA 2 of 29



Source: Esri, DigitalGlobe, GeoEye, Earthstar Geographics, CNES/Airbus DS, USDA, USGS, AEX, Getmapping, Aerogrid, IGN, IGP, swisstopo, and the GIS User Community

Iowa Great River Road National Scenic Byway



Intrinsic Resources

DAVID L. DAHLQUIST ASSOCIATES, LLC

Origin of geo-data: Iowa DOT, ESRI, Inc., and David L. Dahlquist Associates.

The opinions, findings, and conclusions expressed in this publication are those of the author and not necessarily those of the Iowa Department of Transportation or of the Federal Highway Administration.



Legend

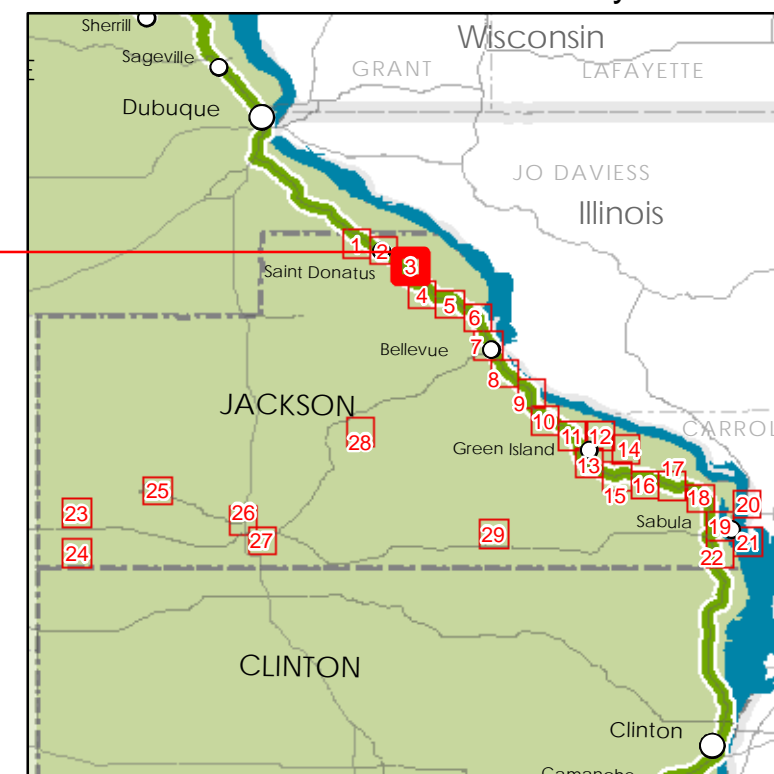
- Sc Scenic Resource
- Na Natural Resource
- Hi Historical Resource
- Ar Archeological Resource
- Cu Cultural Resource
- Re Recreational Resource
- GRR Interpretive Center
- In Interpretative Communications
- VC Visitor Center
- MR Mississippi River Access or View
- SA Supplemental Attraction
- Iowa Great River Road

This document issued on:
Sunday, May 10, 2015

County Abbreviations

AL Allamakee
CY Clayton
DU Dubuque
JA Jackson
CL Clinton
SC Scott
MU Muscatine
LO Louisa
DM Des Moines
LE Lee

County Location



State Location



Jackson County
Sheet JA 3 of 29

Sheet JA-3

GREAT RIVER RD

Sheet JA-4

JACKSON COUNTY

Sheet JA-5

North

0 650 1,300 2,600 3,900

Source: Esri, DigitalGlobe, GeoEye, Earthstar Geographics, CNES/Airbus DS, USDA, USGS, AEX, Getmapping, Aerogrid, IGN, IGP, swisstopo, and the GIS User Community

Iowa Great River Road
National Scenic Byway



Intrinsic Resources

DAVID L. DAHLQUIST ASSOCIATES, LLC

Origin of geo-data: Iowa DOT, ESRI, Inc., and David L. Dahlquist Associates.

The opinions, findings, and conclusions expressed in this publication are those of the author and not necessarily those of the Iowa Department of Transportation or of the Federal Highway Administration.



This document issued on:
Sunday, May 10, 2015

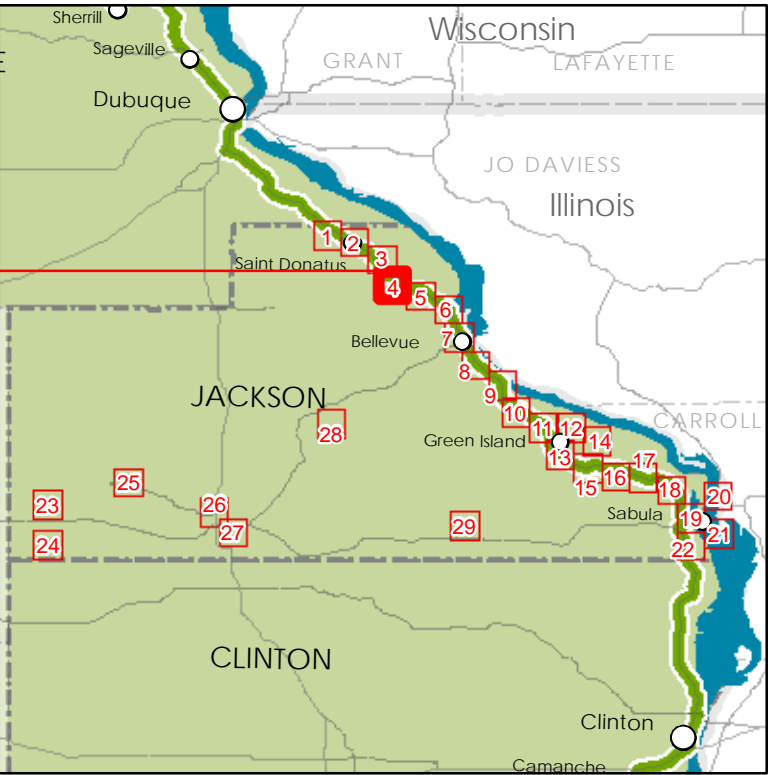
County
Abbreviations

AL Allamakee
CY Clayton
DU Dubuque
JA Jackson
CL Clinton
SC Scott
MU Muscatine
LO Louisa
DM Des Moines
LE Lee

Legend

- Sc Scenic Resource
- Na Natural Resource
- Hi Historical Resource
- Ar Archeological Resource
- Cu Cultural Resource
- Re Recreational Resource
- GRR Interpretive Center
- In Interpretative Communications
- VC Visitor Center
- MR Mississippi River Access or View
- SA Supplemental Attraction
- Iowa Great River Road

County Location



State Location

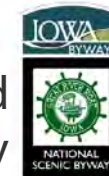


Jackson County
Sheet JA 4 of 29



Source: Esri, DigitalGlobe, GeoEye, Earthstar Geographics, CNES/Airbus DS, USDA, USGS, AEX, Getmapping, Aerogrid, IGN, IGP, swisstopo, and the GIS User Community

Iowa Great River Road National Scenic Byway



Intrinsic Resources

DAVID L. DAHLQUIST ASSOCIATES, LLC

Origin of geo-data: Iowa DOT, ESRI, Inc., and David L. Dahlquist Associates.

The opinions, findings, and conclusions expressed in this publication are those of the author and not necessarily those of the Iowa Department of Transportation or of the Federal Highway Administration.



Legend

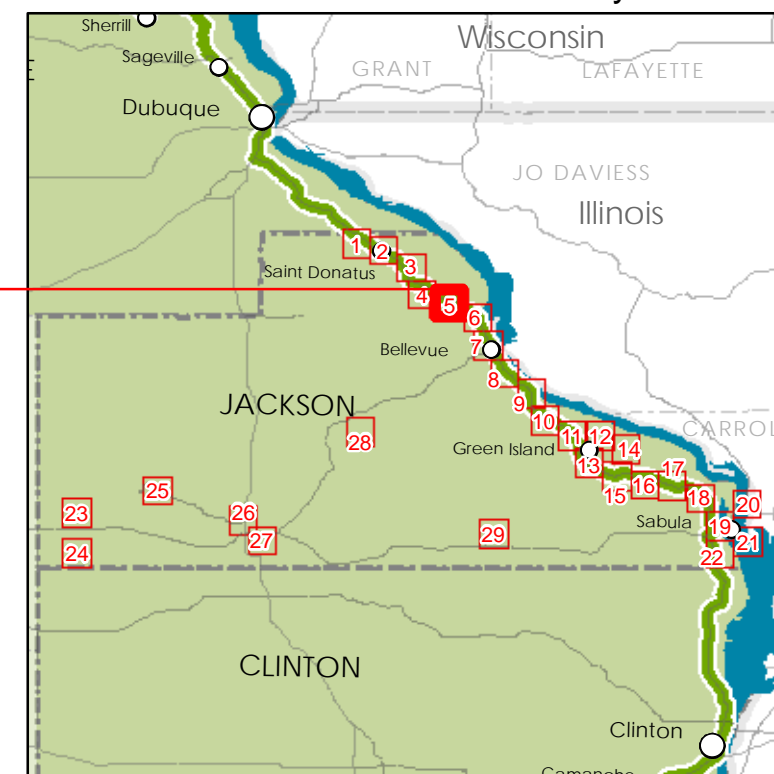
- Sc Scenic Resource
- Na Natural Resource
- Hi Historical Resource
- Ar Archeological Resource
- Cu Cultural Resource
- Re Recreational Resource
- GRR Interpretive Center
- In Interpretative Communications
- VC Visitor Center
- MR Mississippi River Access or View
- SA Supplemental Attraction
- Iowa Great River Road

This document issued on:
Sunday, May 10, 2015

County Abbreviations

AL Allamakee
CY Clayton
DU Dubuque
JA Jackson
CL Clinton
SC Scott
MU Muscatine
LO Louisa
DM Des Moines
LE Lee

County Location



State Location



Jackson County
Sheet JA 5 of 29



Source: Esri, DigitalGlobe, GeoEye, Earthstar Geographics, CNES/Airbus DS, USDA, USGS, AFX, Getmapping, Aerogrid, IGN, IGP, swisstopo, and the GIS User Community

Iowa Great River Road National Scenic Byway



Intrinsic Resources

DAVID L. DAHLQUIST ASSOCIATES, LLC

Origin of geo-data: Iowa DOT, ESRI, Inc., and David L. Dahlquist Associates.

The opinions, findings, and conclusions expressed in this publication are those of the author and not necessarily those of the Iowa Department of Transportation or of the Federal Highway Administration.



Legend

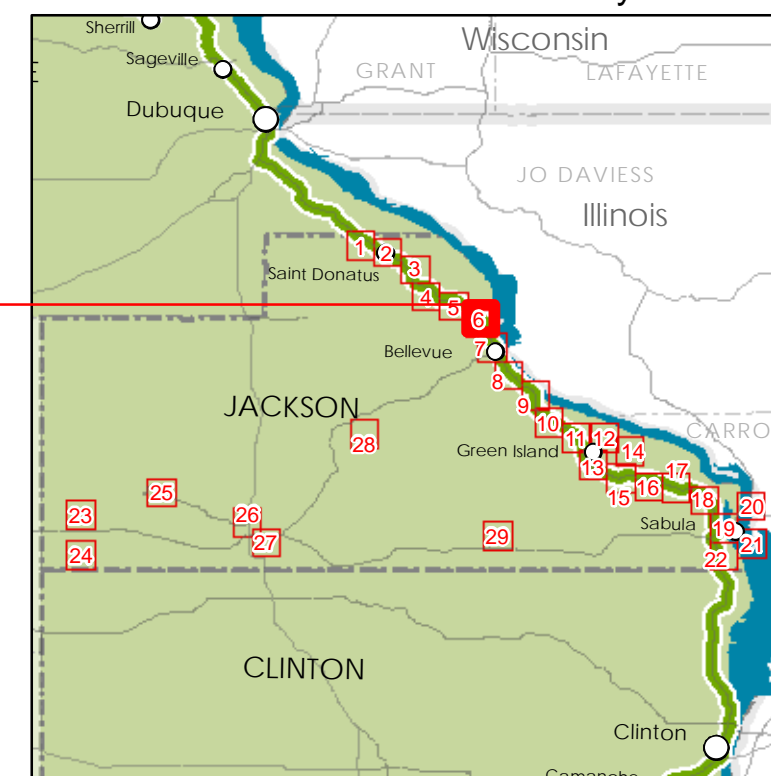
- Sc Scenic Resource
- Na Natural Resource
- Hi Historical Resource
- Ar Archeological Resource
- Cu Cultural Resource
- Re Recreational Resource
- GRR Interpretive Center
- In Interpretative Communications
- VC Visitor Center
- MR Mississippi River Access or View
- SA Supplemental Attraction
- Iowa Great River Road

This document issued on:
Sunday, May 10, 2015

County
Abbreviations

AL Allamakee
CY Clayton
DU Dubuque
JA Jackson
CL Clinton
SC Scott
MU Muscatine
LO Louisa
DM Des Moines
LE Lee

County Location



State Location



Jackson County
Sheet JA 6 of 29



Iowa Great River Road National Scenic Byway



Intrinsic Resources

DAVID L. DAHLQUIST ASSOCIATES, LLC

Origin of geo-data: Iowa DOT, ESRI, Inc., and David L. Dahlquist Associates.

The opinions, findings, and conclusions expressed in this publication are those of the author and not necessarily those of the Iowa Department of Transportation or of the Federal Highway Administration.



This document issued on:
Sunday, May 10, 2015

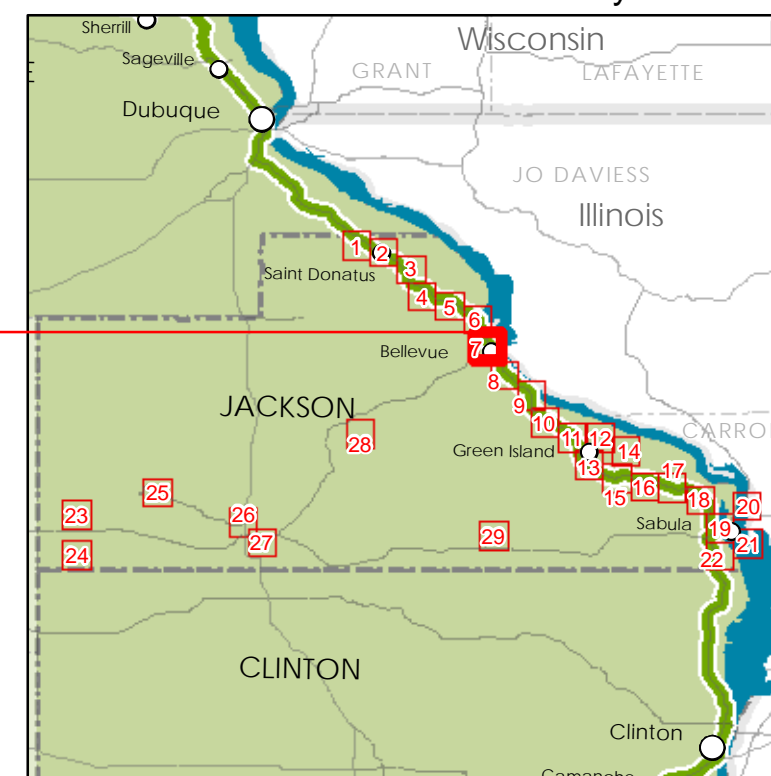
County
Abbreviations

AL Allamakee
CY Clayton
DU Dubuque
JA Jackson
CL Clinton
SC Scott
MU Muscatine
LO Louisa
DM Des Moines
LE Lee

Legend

- Sc Scenic Resource
- Na Natural Resource
- Hi Historical Resource
- Ar Archeological Resource
- Cu Cultural Resource
- Re Recreational Resource
- GRR GRR Interpretive Center
- In Interpretative Communications
- VC Visitor Center
- MR Mississippi River Access or View
- SA Supplemental Attraction
- Iowa Great River Road

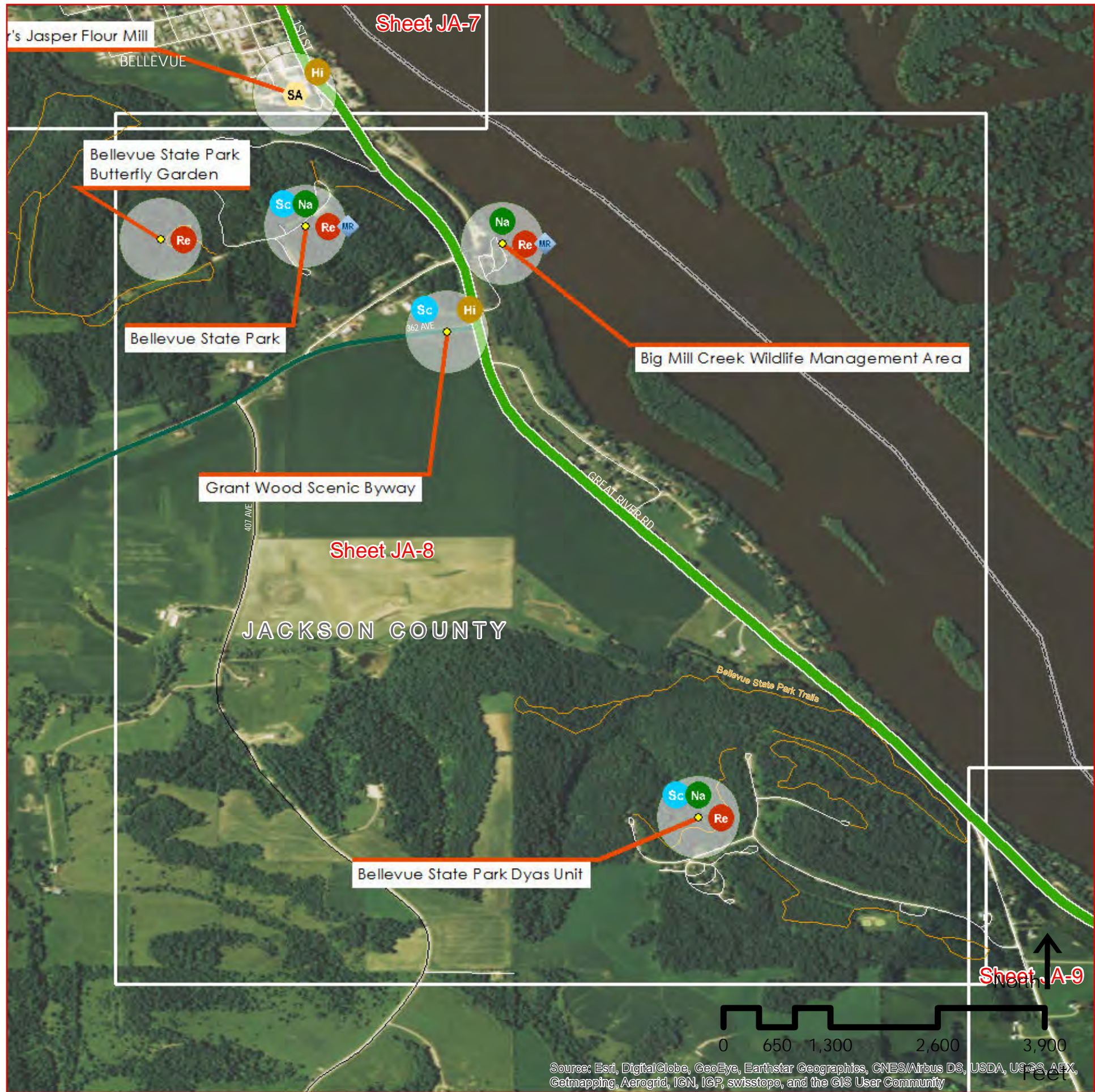
County Location



State Location



Jackson County
Sheet JA 7 of 29



Iowa Great River Road National Scenic Byway



Intrinsic Resources

DAVID L. DAHLQUIST ASSOCIATES, LLC

Origin of geo-data: Iowa DOT, ESRI, Inc., and David L. Dahlquist Associates.

The opinions, findings, and conclusions expressed in this publication are those of the author and not necessarily those of the Iowa Department of Transportation or of the Federal Highway Administration.



This document issued on:
Sunday, May 10, 2015

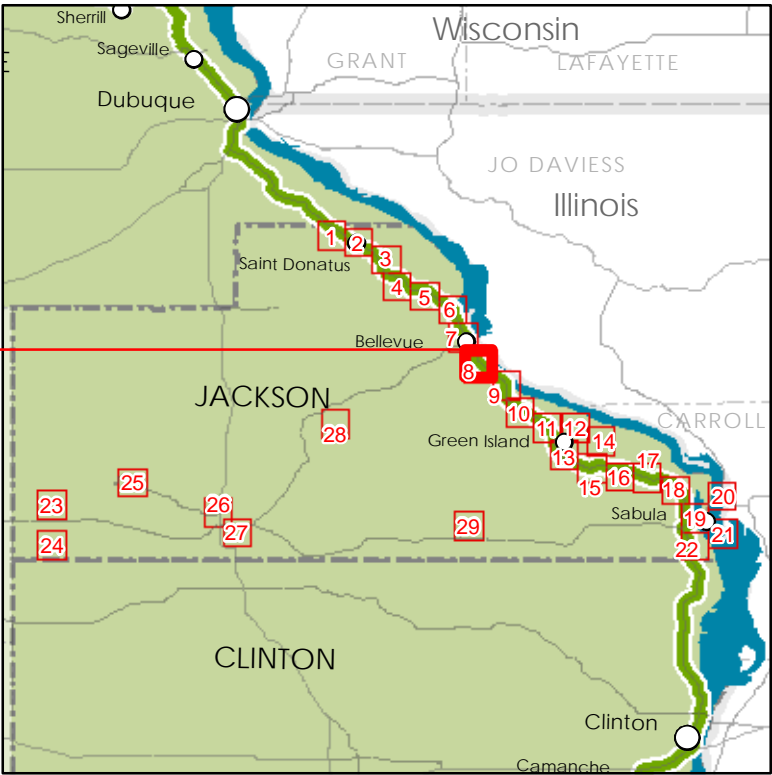
County
Abbreviations

- AL Allamakee
- CY Clayton
- DU Dubuque
- JA Jackson
- CL Clinton
- SC Scott
- MU Muscatine
- LO Louisa
- DM Des Moines
- LE Lee

Legend

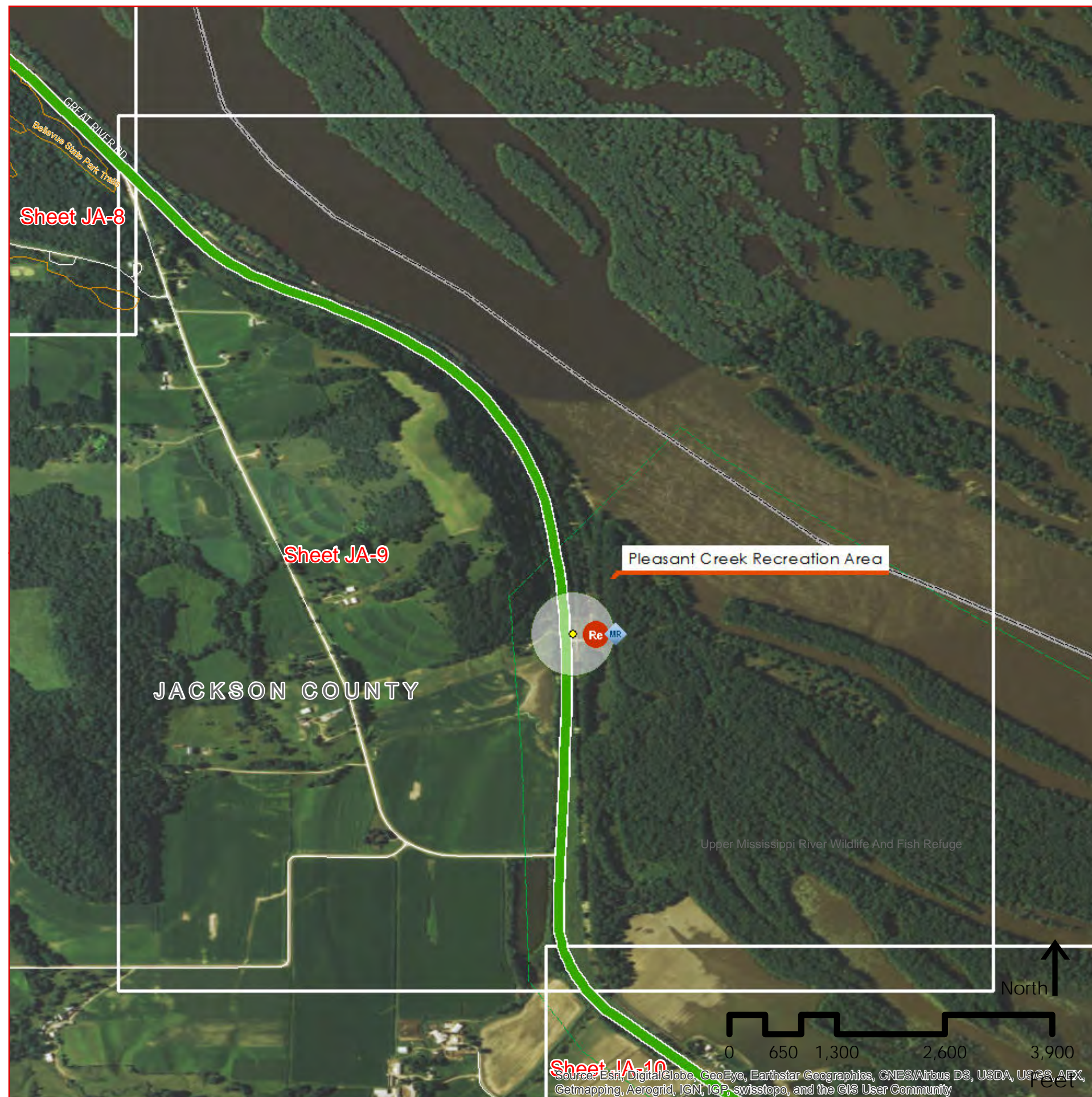
- Sc Scenic Resource
- Na Natural Resource
- Hi Historical Resource
- Ar Archeological Resource
- Cu Cultural Resource
- Re Recreational Resource
- GRR Interpretive Center
- In Interpretative Communications
- VC Visitor Center
- MR Mississippi River Access or View
- SA Supplemental Attraction
- Iowa Great River Road

County Location



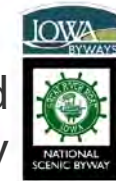
State Location





Source: Esri, DigitalGlobe, GeoEye, Earthstar Geographics, CNES/Airbus DS, USDA, USGS, AEX, Getmapping, Aerogrid, IGN, IGP, swisstopo, and the GIS User Community

Iowa Great River Road National Scenic Byway



Intrinsic Resources

DAVID L. DAHLQUIST ASSOCIATES, LLC

Origin of geo-data: Iowa DOT, ESRI, Inc., and David L. Dahlquist Associates.

The opinions, findings, and conclusions expressed in this publication are those of the author and not necessarily those of the Iowa Department of Transportation or of the Federal Highway Administration.



This document issued on:
Sunday, May 10, 2015

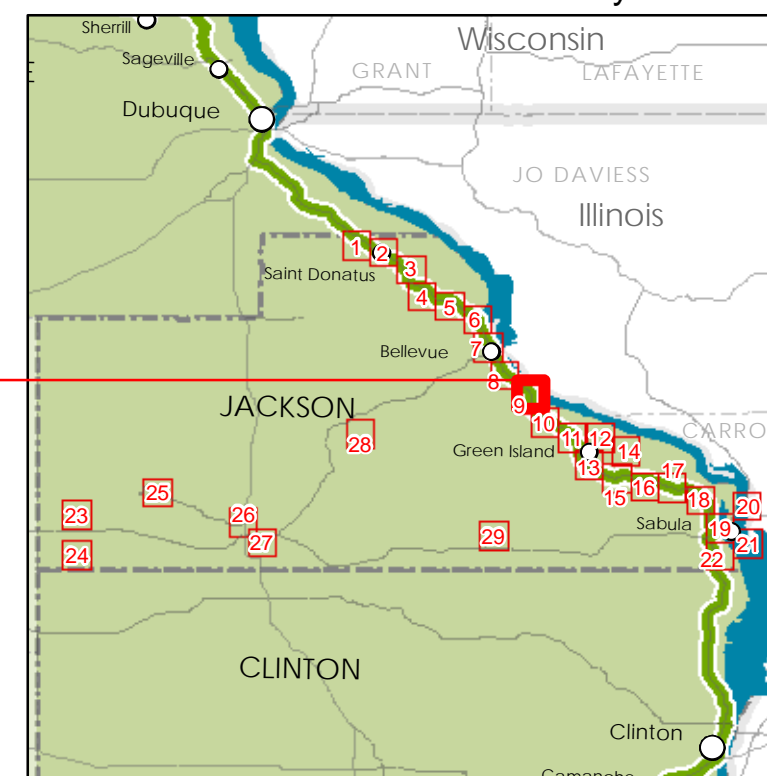
County Abbreviations

- AL Allamakee
- CY Clayton
- DU Dubuque
- JA Jackson
- CL Clinton
- SC Scott
- MU Muscatine
- LO Louisa
- DM Des Moines
- LE Lee

Legend

- Sc Scenic Resource
- Na Natural Resource
- Hi Historical Resource
- Ar Archeological Resource
- Cu Cultural Resource
- Re Recreational Resource
- GRR Interpretive Center
- In Interpretative Communications
- VC Visitor Center
- MR Mississippi River Access or View
- SA Supplemental Attraction
- Iowa Great River Road

County Location



State Location





Source: Esri, DigitalGlobe, GeoEye, Earthstar Geographics, CNES/Airbus DS, USDA, USGS, AEX, Getmapping, Aerogrid, IGN, IGP, swisstopo, and the GIS User Community

Iowa Great River Road National Scenic Byway



Intrinsic Resources

DAVID L. DAHLQUIST ASSOCIATES, LLC

Origin of geo-data: Iowa DOT, ESRI, Inc., and David L. Dahlquist Associates.

The opinions, findings, and conclusions expressed in this publication are those of the author and not necessarily those of the Iowa Department of Transportation or of the Federal Highway Administration.



Legend

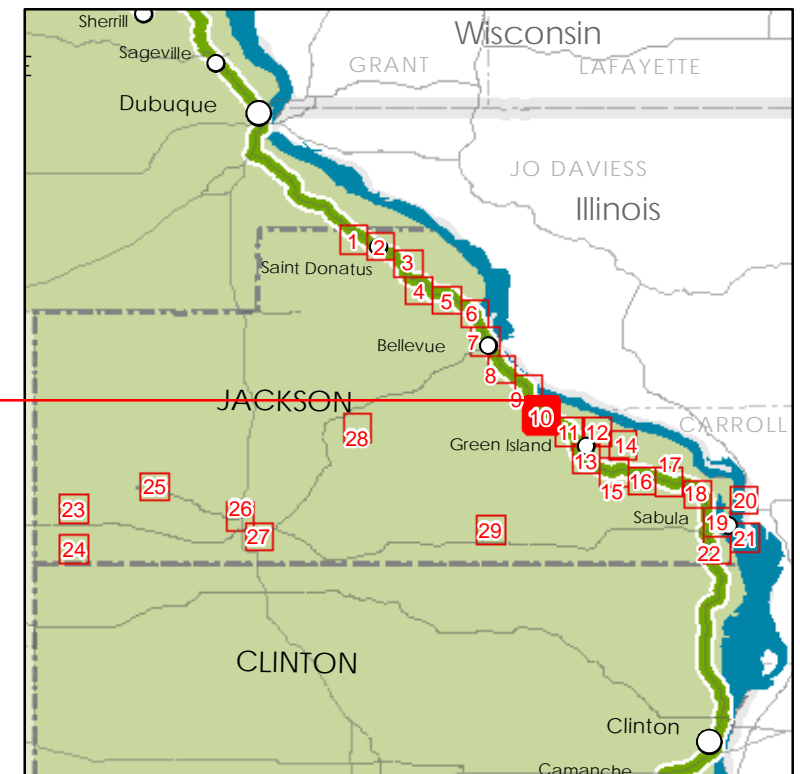
- Sc Scenic Resource
- Na Natural Resource
- Hi Historical Resource
- Ar Archeological Resource
- Cu Cultural Resource
- Re Recreational Resource
- GRR Interpretive Center
- In Interpretative Communications
- VC Visitor Center
- MR Mississippi River Access or View
- SA Supplemental Attraction
- Iowa Great River Road

This document issued on:
Sunday, May 10, 2015

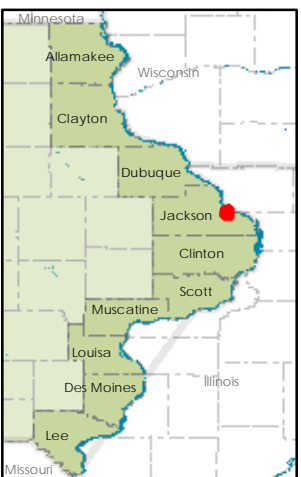
County Abbreviations

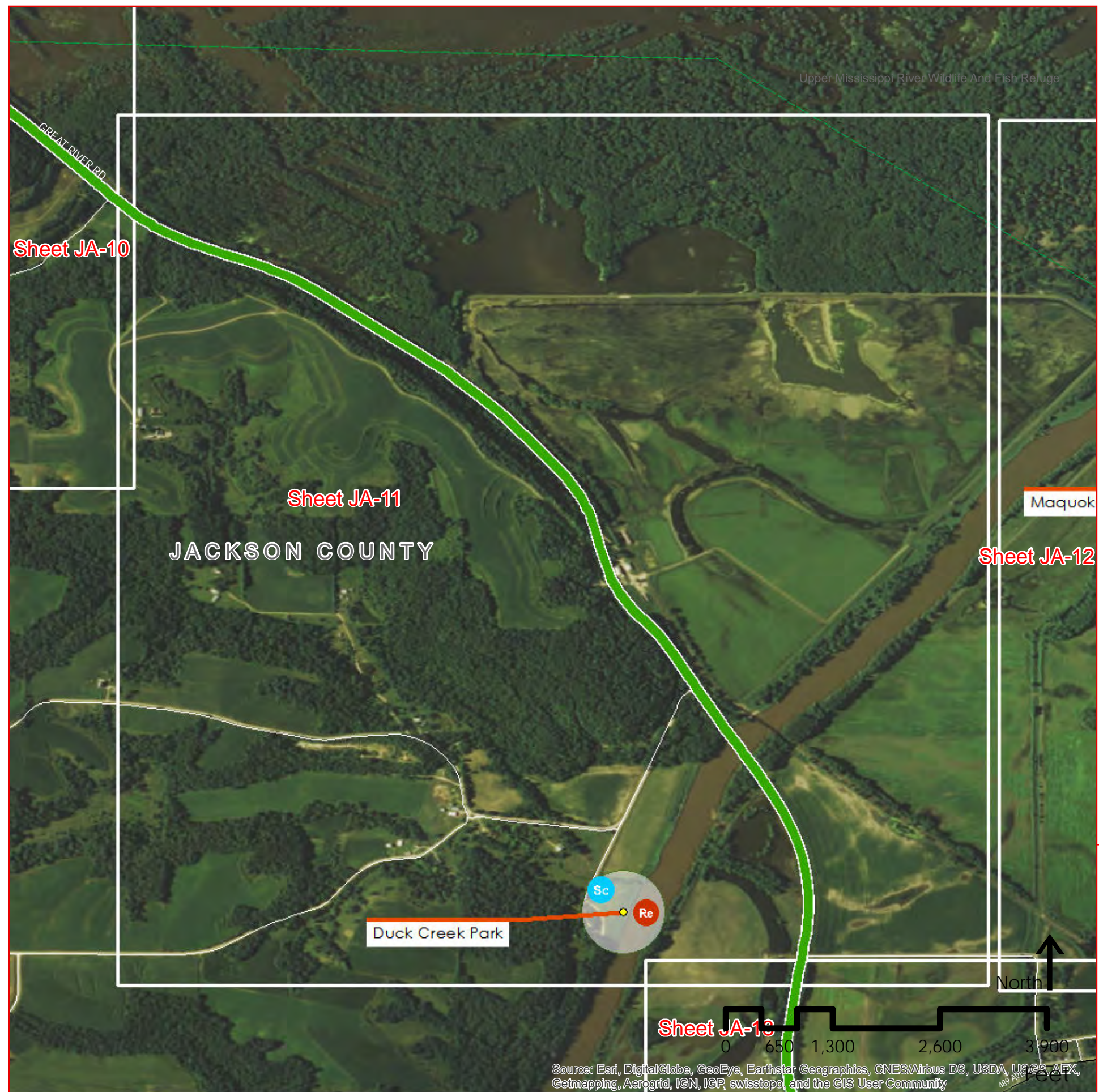
- AL Allamakee
- CY Clayton
- DU Dubuque
- JA Jackson
- CL Clinton
- SC Scott
- MU Muscatine
- LO Louisa
- DM Des Moines
- LE Lee

County Location



State Location





Source: Esri, DigitalGlobe, GeoEye, Earthstar Geographics, CNES/Airbus DS, USDA, USGS, AEX, Getmapping, Aerogrid, IGN, IGP, swisstopo, and the GIS User Community

Iowa Great River Road National Scenic Byway



Intrinsic Resources

DAVID L. DAHLQUIST ASSOCIATES, LLC

Origin of geo-data: Iowa DOT, ESRI, Inc., and David L. Dahlquist Associates.

The opinions, findings, and conclusions expressed in this publication are those of the author and not necessarily those of the Iowa Department of Transportation or of the Federal Highway Administration.



Legend

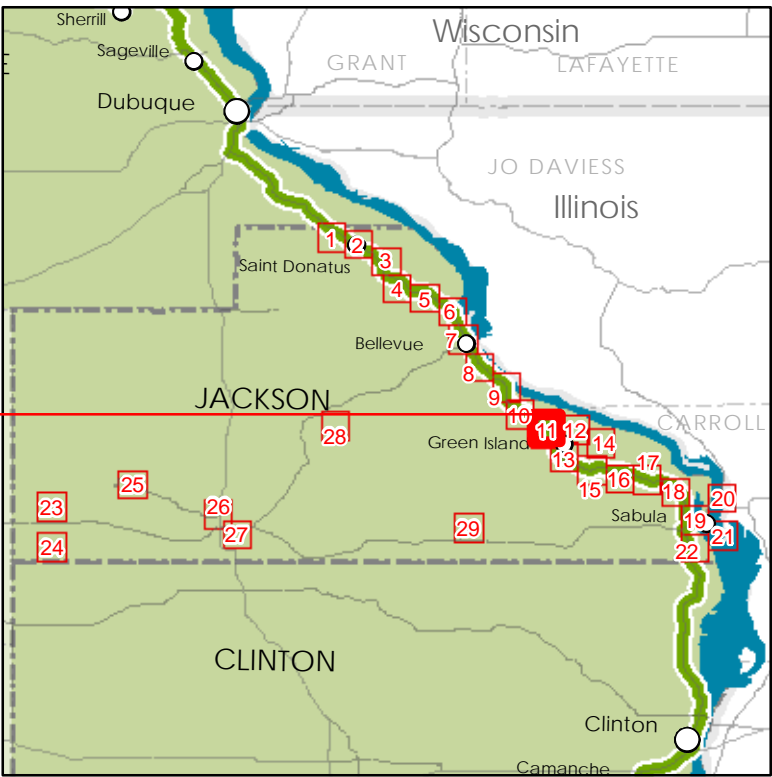
- Sc Scenic Resource
- Na Natural Resource
- Hi Historical Resource
- Ar Archeological Resource
- Cu Cultural Resource
- Re Recreational Resource
- GRR Interpretive Center
- In Interpretative Communications
- VC Visitor Center
- MR Mississippi River Access or View
- SA Supplemental Attraction
- Iowa Great River Road

This document issued on:
Sunday, May 10, 2015

County Abbreviations

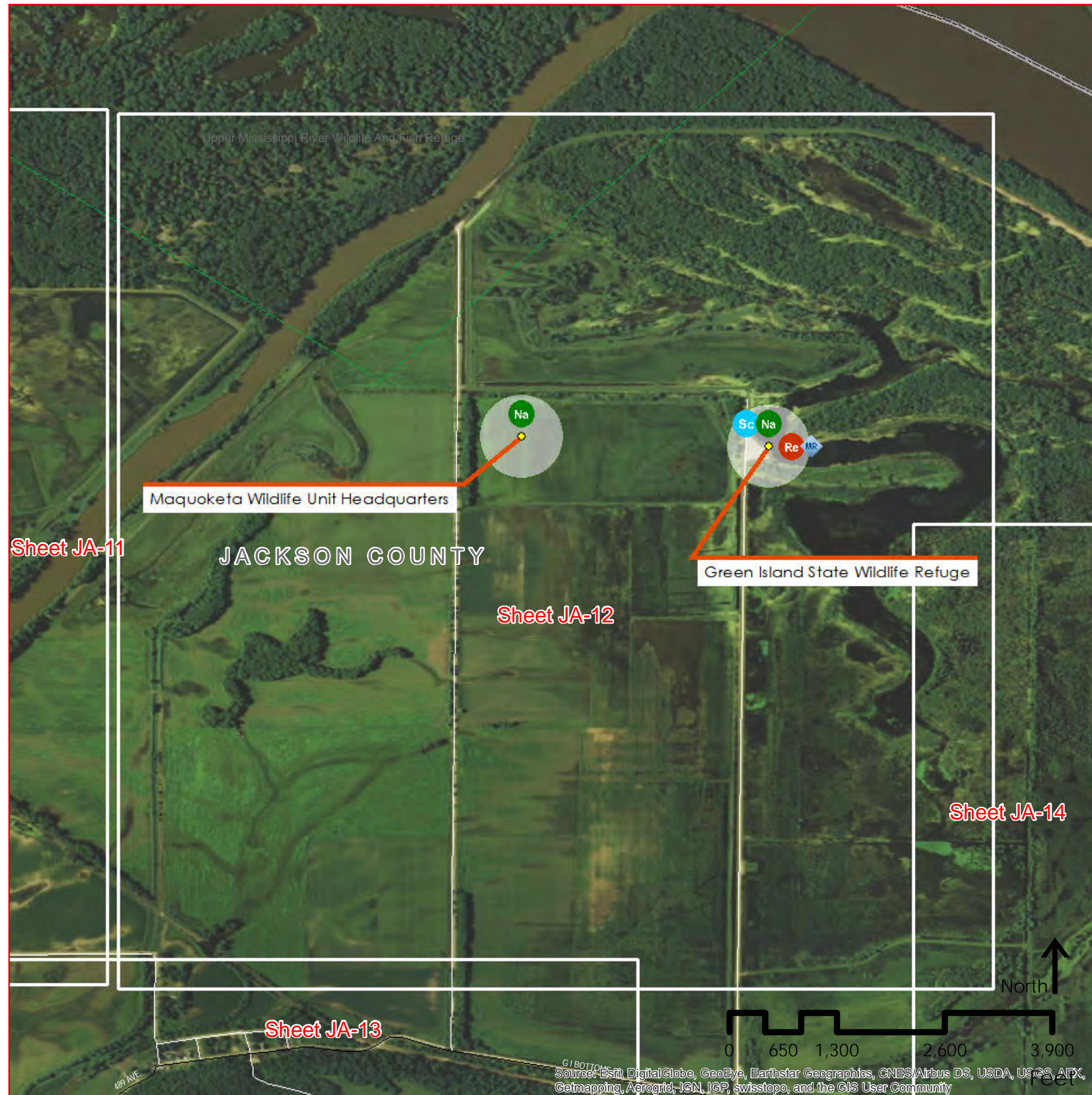
- AL Allamakee
- CY Clayton
- DU Dubuque
- JA Jackson
- CL Clinton
- SC Scott
- MU Muscatine
- LO Louisa
- DM Des Moines
- LE Lee

County Location



State Location





Iowa Great River Road National Scenic Byway



Intrinsic Resources

DAVID L. DAHLQUIST ASSOCIATES, LLC

Origin of geo-data: Iowa DOT, ESRI, Inc., and David L. Dahlquist Associates.

The opinions, findings, and conclusions expressed in this publication are those of the author and not necessarily those of the Iowa Department of Transportation or of the Federal Highway Administration.




This document issued on:
Sunday, May 10, 2015

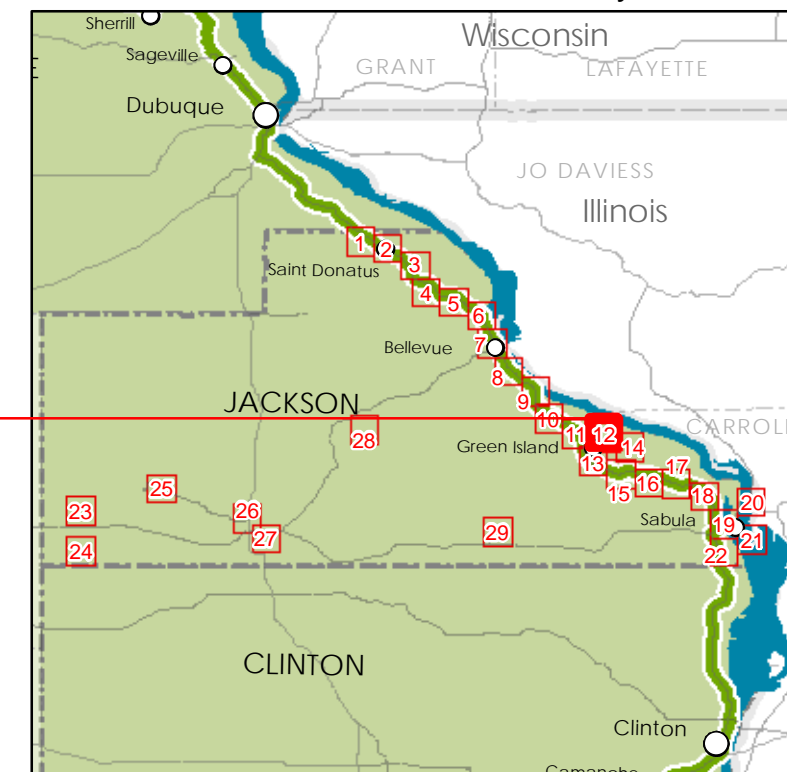
County
Abbreviations

AL Allamakee
CY Clayton
DU Dubuque
JA Jackson
CL Clinton
SC Scott
MU Muscatine
LO Louisa
DM Des Moines
LE Lee

Legend

- Sc Scenic Resource
- Na Natural Resource
- Hi Historical Resource
- Ar Archeological Resource
- Cu Cultural Resource
- Re Recreational Resource
-  GRR Interpretive Center
- In Interpretative Communications
- VC Visitor Center
- MR Mississippi River Access or View
- SA Supplemental Attraction
- Iowa Great River Road

County Location



State Location



Jackson County

Sheet JA 12 of 29

Source: Esri, DigitalGlobe, GeoEye, Earthstar Geographics, CNES/Airbus DS, USDA, USGS, AEX, Getmapping, Aerogrid, IGN, IGP, swisstopo, and the GIS User Community



Iowa Great River Road
National Scenic Byway



Intrinsic Resources

DAVID L. DAHLQUIST ASSOCIATES, LLC

Origin of geo-data: Iowa DOT, ESRI, Inc., and David L. Dahlquist Associates.

The opinions, findings, and conclusions expressed in this publication are those of the author and not necessarily those of the Iowa Department of Transportation or of the Federal Highway Administration.



This document issued on:
Sunday, May 10, 2015

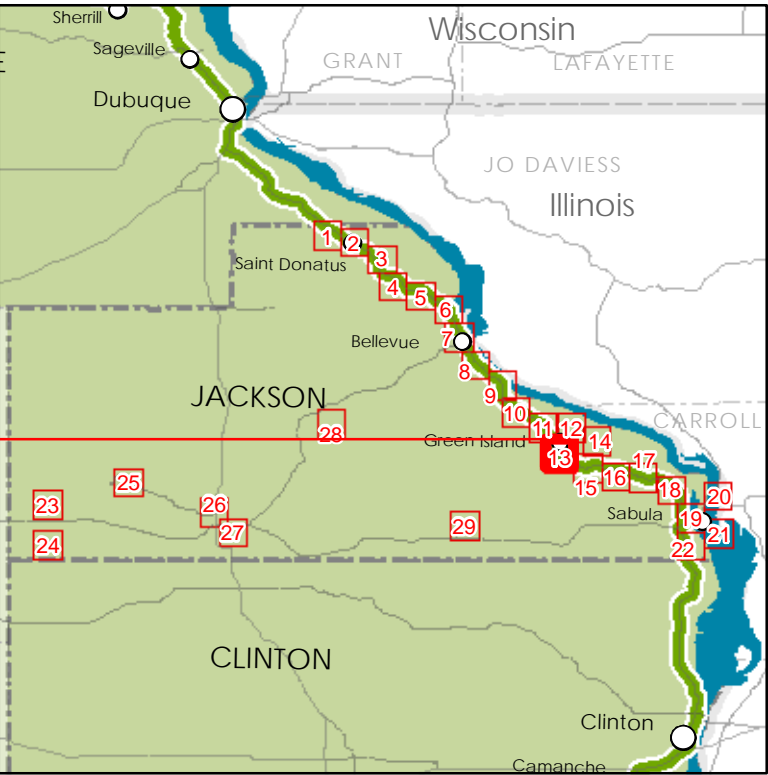
County Abbreviations

- AL Allamakee
- CY Clayton
- DU Dubuque
- JA Jackson
- CL Clinton
- SC Scott
- MU Muscatine
- LO Louisa
- DM Des Moines
- LE Lee

Legend

- Sc Scenic Resource
- Na Natural Resource
- Hi Historical Resource
- Ar Archeological Resource
- Cu Cultural Resource
- Re Recreational Resource
- GRR Interpretive Center
- In Interpretative Communications
- VC Visitor Center
- MR Mississippi River Access or View
- SA Supplemental Attraction
- Iowa Great River Road

County Location



State Location





Iowa Great River Road National Scenic Byway



Intrinsic Resources

DAVID L. DAHLQUIST ASSOCIATES, LLC

Origin of geo-data: Iowa DOT, ESRI, Inc., and David L. Dahlquist Associates.

The opinions, findings, and conclusions expressed in this publication are those of the author and not necessarily those of the Iowa Department of Transportation or of the Federal Highway Administration.



Legend

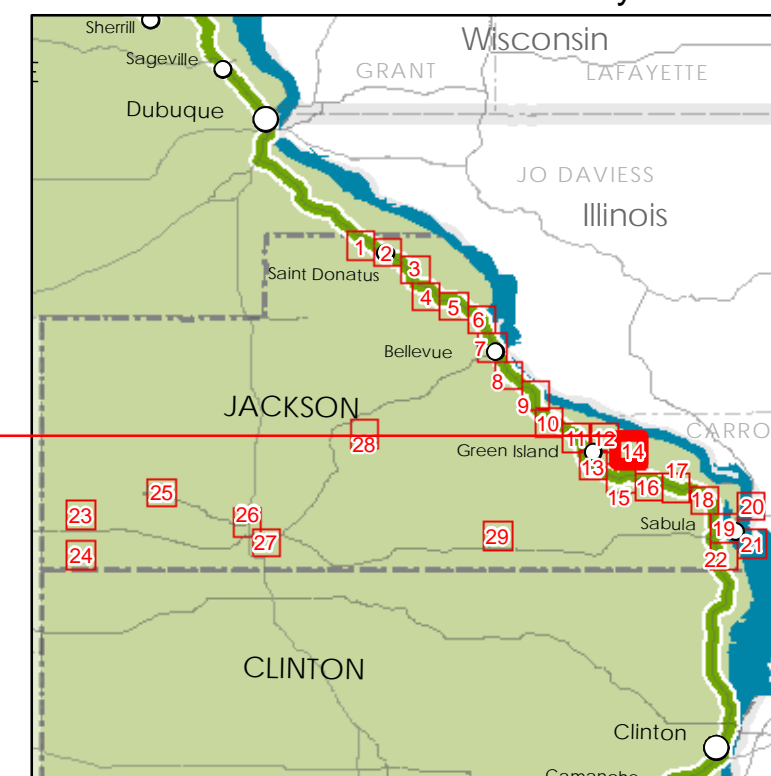
- Sc Scenic Resource
- Na Natural Resource
- Hi Historical Resource
- Ar Archeological Resource
- Cu Cultural Resource
- Re Recreational Resource
- GRR Interpretive Center
- In Interpretative Communications
- VC Visitor Center
- MR Mississippi River Access or View
- SA Supplemental Attraction
- Iowa Great River Road

This document issued on:
Sunday, May 10, 2015

County Abbreviations

- AL Allamakee
- CY Clayton
- DU Dubuque
- JA Jackson
- CL Clinton
- SC Scott
- MU Muscatine
- LO Louisa
- DM Des Moines
- LE Lee

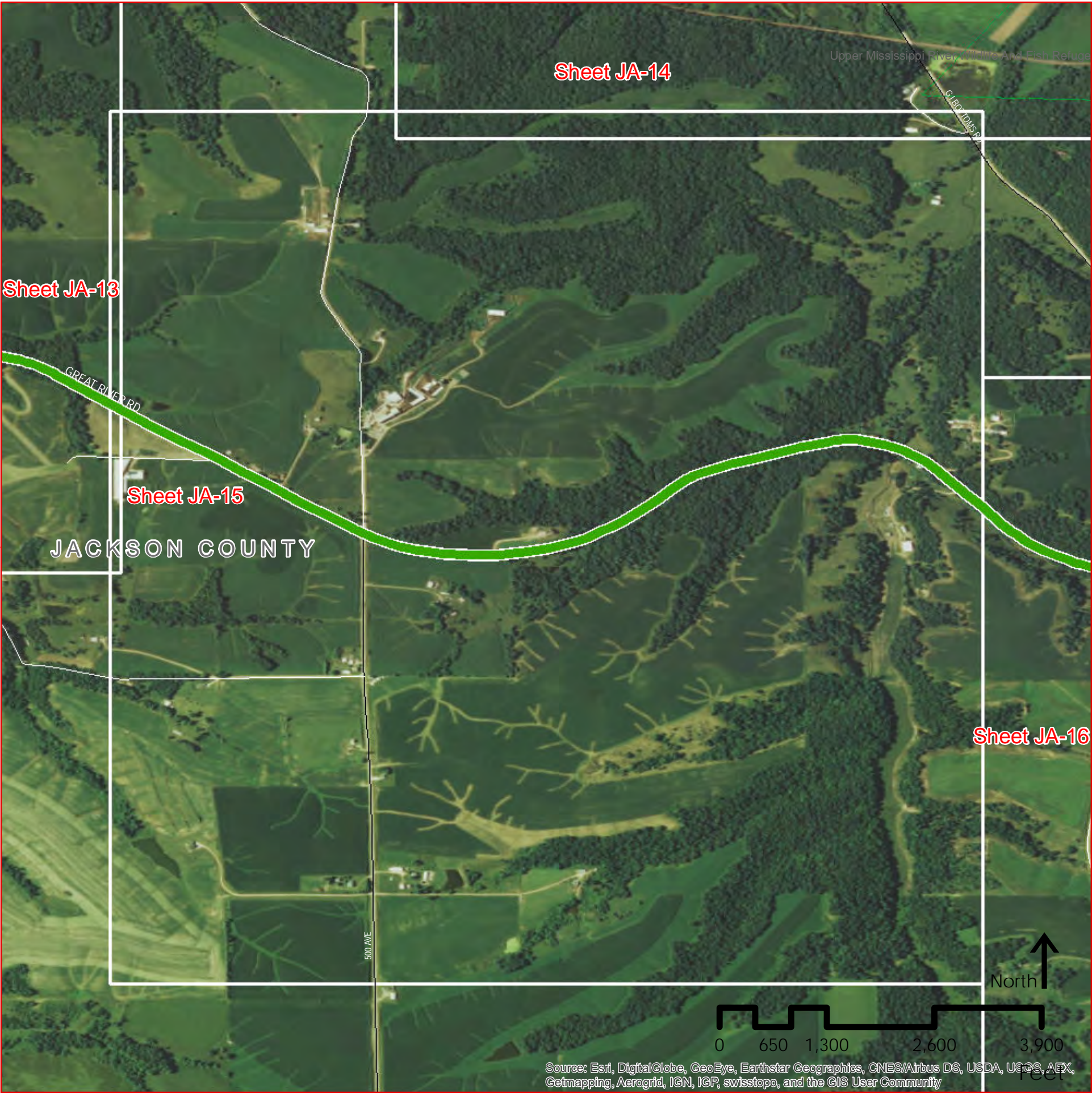
County Location



State Location



Jackson County
Sheet JA 14 of 29



Iowa Great River Road
National Scenic Byway



Intrinsic Resources

DAVID L. DAHLQUIST ASSOCIATES, LLC

Origin of geo-data: Iowa DOT, ESRI, Inc., and David L. Dahlquist Associates.

The opinions, findings, and conclusions expressed in this publication are those of the author and not necessarily those of the Iowa Department of Transportation or of the Federal Highway Administration.



Legend

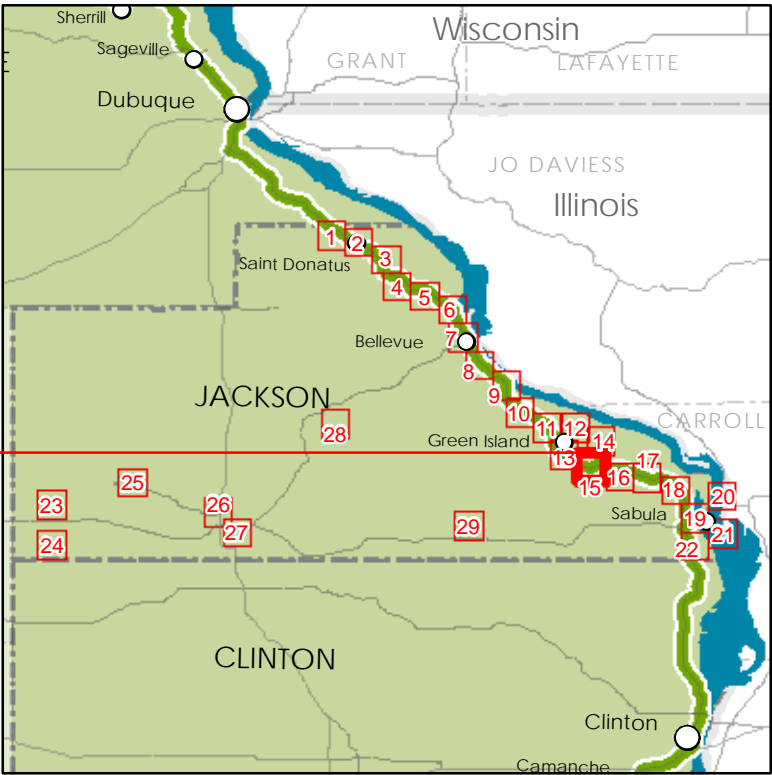
- Sc Scenic Resource
- Na Natural Resource
- Hi Historical Resource
- Ar Archeological Resource
- Cu Cultural Resource
- Re Recreational Resource
- GRR Interpretive Center
- In Interpretative Communications
- VC Visitor Center
- MR Mississippi River Access or View
- SA Supplemental Attraction
- Iowa Great River Road

This document issued on:
Sunday, May 10, 2015

County Abbreviations

- AL Allamakee
- CY Clayton
- DU Dubuque
- JA Jackson
- CL Clinton
- SC Scott
- MU Muscatine
- LO Louisa
- DM Des Moines
- LE Lee

County Location



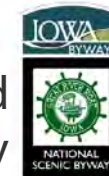
State Location





Source: Esri, DigitalGlobe, GeoEye, Earthstar Geographics, CNES/Airbus DS, USDA, USGS, AFX, Getmapping, Aerogrid, IGN, IGP, swisstopo, and the GIS User Community

Iowa Great River Road National Scenic Byway



Intrinsic Resources

DAVID L. DAHLQUIST ASSOCIATES, LLC

Origin of geo-data: Iowa DOT, ESRI, Inc., and David L. Dahlquist Associates.

The opinions, findings, and conclusions expressed in this publication are those of the author and not necessarily those of the Iowa Department of Transportation or of the Federal Highway Administration.



Legend

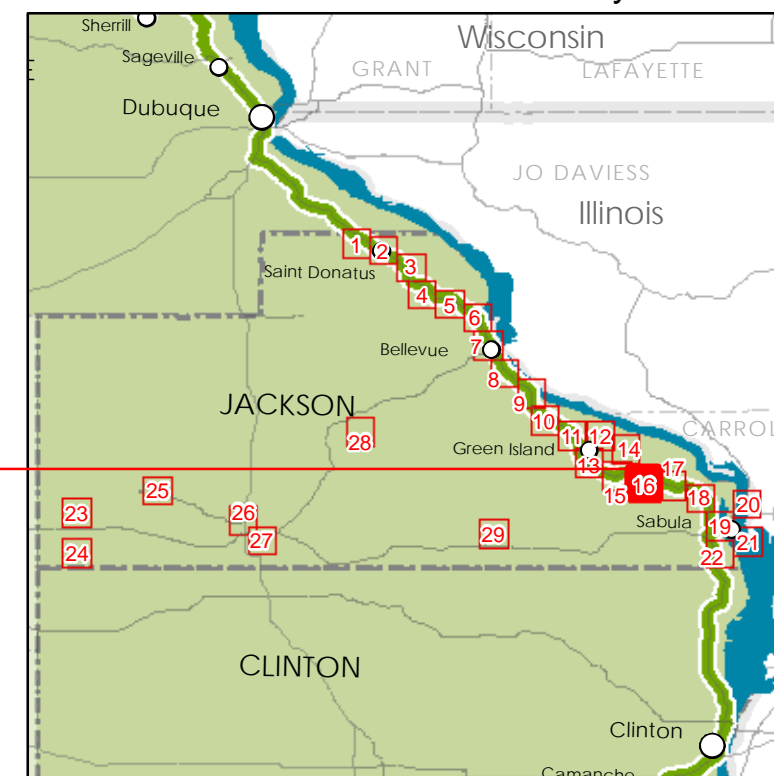
- Sc Scenic Resource
- Na Natural Resource
- Hi Historical Resource
- Ar Archeological Resource
- Cu Cultural Resource
- Re Recreational Resource
- GRR Interpretive Center
- In Interpretative Communications
- VC Visitor Center
- ◆ MR Mississippi River Access or View
- SA Supplemental Attraction
- Iowa Great River Road

This document issued on:
Sunday, May 10, 2015

County Abbreviations

AL Allamakee
CY Clayton
DU Dubuque
JA Jackson
CL Clinton
SC Scott
MU Muscatine
LO Louisa
DM Des Moines
LE Lee

County Location



State Location



Jackson County
Sheet JA 16 of 29



Source: Esri, DigitalGlobe, GeoEye, Earthstar Geographics, CNES/Airbus DS, USDA, USGS, AEX, Getmapping, Aerogrid, IGN, IGP, swisstopo, and the GIS User Community

Iowa Great River Road
National Scenic Byway



Intrinsic Resources

DAVID L. DAHLQUIST ASSOCIATES, LLC

Origin of geo-data: Iowa DOT, ESRI, Inc., and David L. Dahlquist Associates.

The opinions, findings, and conclusions expressed in this publication are those of the author and not necessarily those of the Iowa Department of Transportation or of the Federal Highway Administration.



This document issued on:
Sunday, May 10, 2015

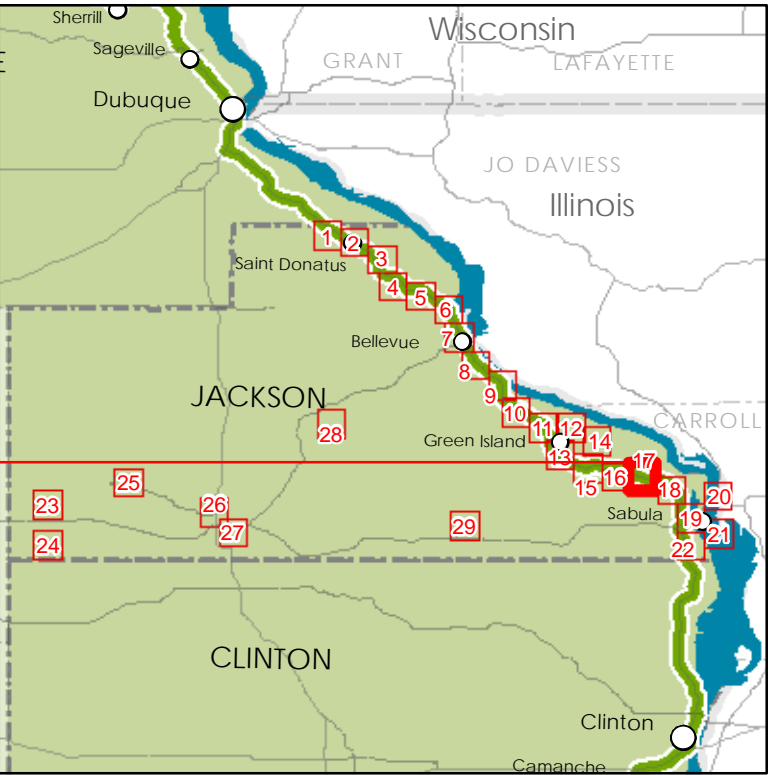
County
Abbreviations

- AL Allamakee
- CY Clayton
- DU Dubuque
- JA Jackson
- CL Clinton
- SC Scott
- MU Muscatine
- LO Louisa
- DM Des Moines
- LE Lee

Legend

- Sc Scenic Resource
- Na Natural Resource
- Hi Historical Resource
- Ar Archeological Resource
- Cu Cultural Resource
- Re Recreational Resource
- GRR Interpretive Center
- In Interpretative Communications
- VC Visitor Center
- MR Mississippi River Access or View
- SA Supplemental Attraction
- Iowa Great River Road

County Location



State Location





Iowa Great River Road National Scenic Byway



Intrinsic Resources

DAVID L. DAHLQUIST ASSOCIATES, LLC

Origin of geo-data: Iowa DOT, ESRI, Inc., and David L. Dahlquist Associates.

The opinions, findings, and conclusions expressed in this publication are those of the author and not necessarily those of the Iowa Department of Transportation or of the Federal Highway Administration.



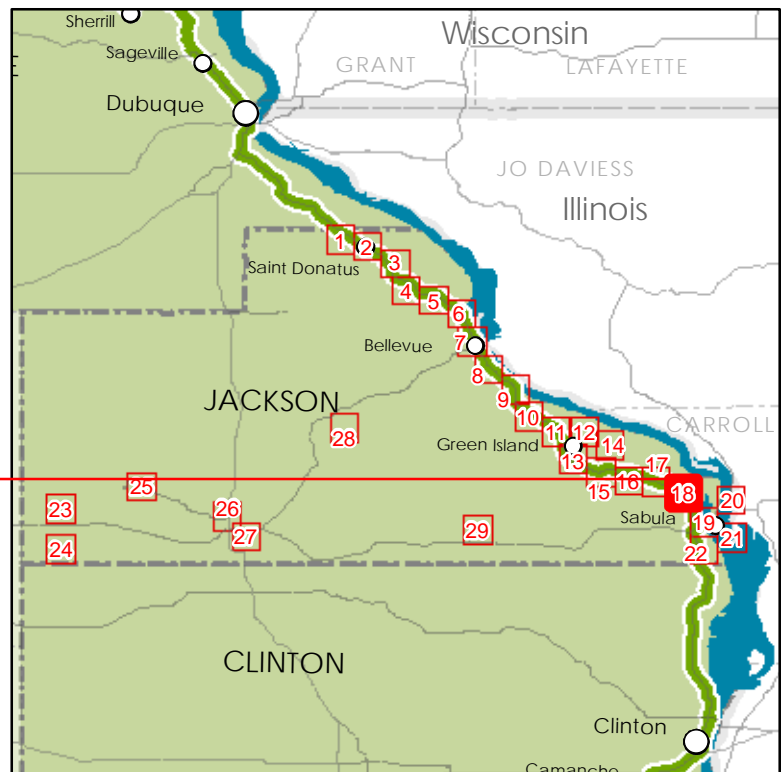
Legend

- Sc Scenic Resource
- Na Natural Resource
- Hi Historical Resource
- Ar Archeological Resource
- Cu Cultural Resource
- Re Recreational Resource
- GRR Interpretive Center
- In Interpretative Communications
- VC Visitor Center
- MR Mississippi River Access or View
- SA Supplemental Attraction
- Iowa Great River Road

This document issued on:
Sunday, May 10, 2015

- County Abbreviations
- AL Allamakee
 - CY Clayton
 - DU Dubuque
 - JA Jackson
 - CL Clinton
 - SC Scott
 - MU Muscatine
 - LO Louisa
 - DM Des Moines
 - LE Lee

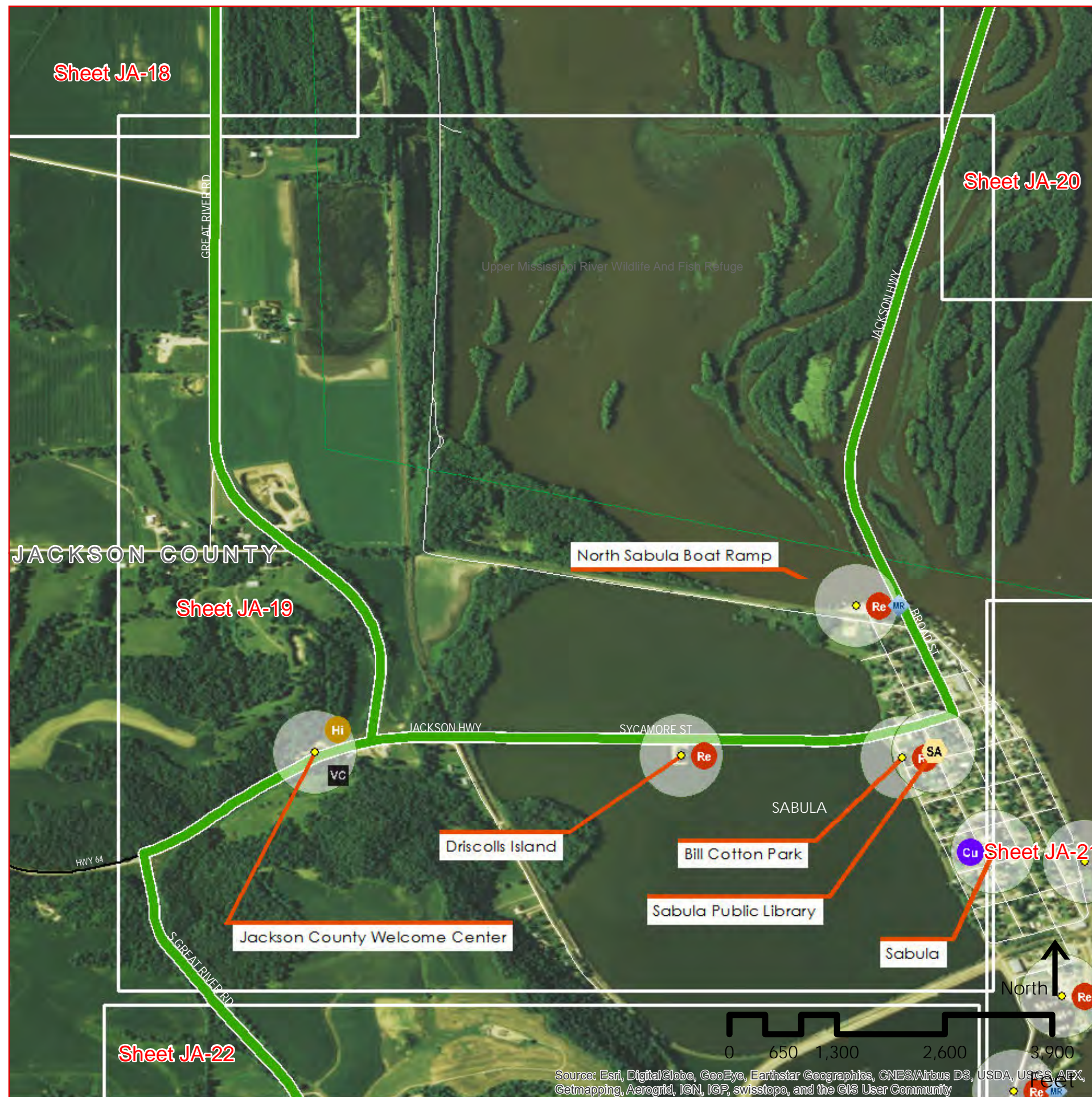
County Location



State Location



Jackson County
Sheet JA 18 of 29



Iowa Great River Road National Scenic Byway



Intrinsic Resources

DAVID L. DAHLQUIST ASSOCIATES, LLC

Origin of geo-data: Iowa DOT, ESRI, Inc., and David L. Dahlquist Associates.

The opinions, findings, and conclusions expressed in this publication are those of the author and not necessarily those of the Iowa Department of Transportation or of the Federal Highway Administration.



Legend

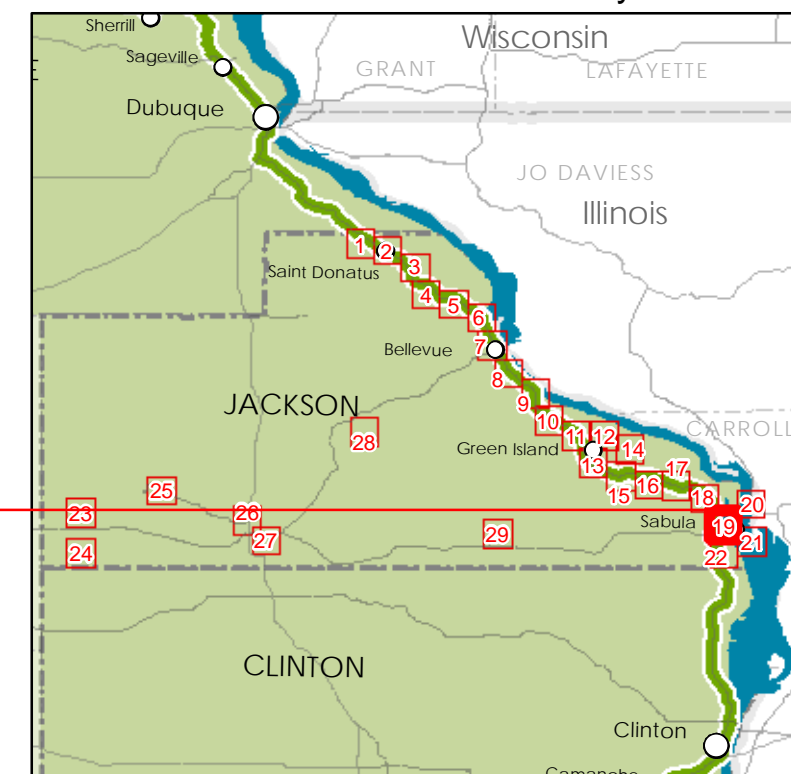
- Sc Scenic Resource
- Na Natural Resource
- Hi Historical Resource
- Ar Archeological Resource
- Cu Cultural Resource
- Re Recreational Resource
- GRR Interpretive Center
- In Interpretative Communications
- VC Visitor Center
- ◆ MR Mississippi River Access or View
- SA Supplemental Attraction
- Iowa Great River Road

This document issued on:
Sunday, May 10, 2015

County Abbreviations

AL Allamakee
CY Clayton
DU Dubuque
JA Jackson
CL Clinton
SC Scott
MU Muscatine
LO Louisa
DM Des Moines
LE Lee

County Location

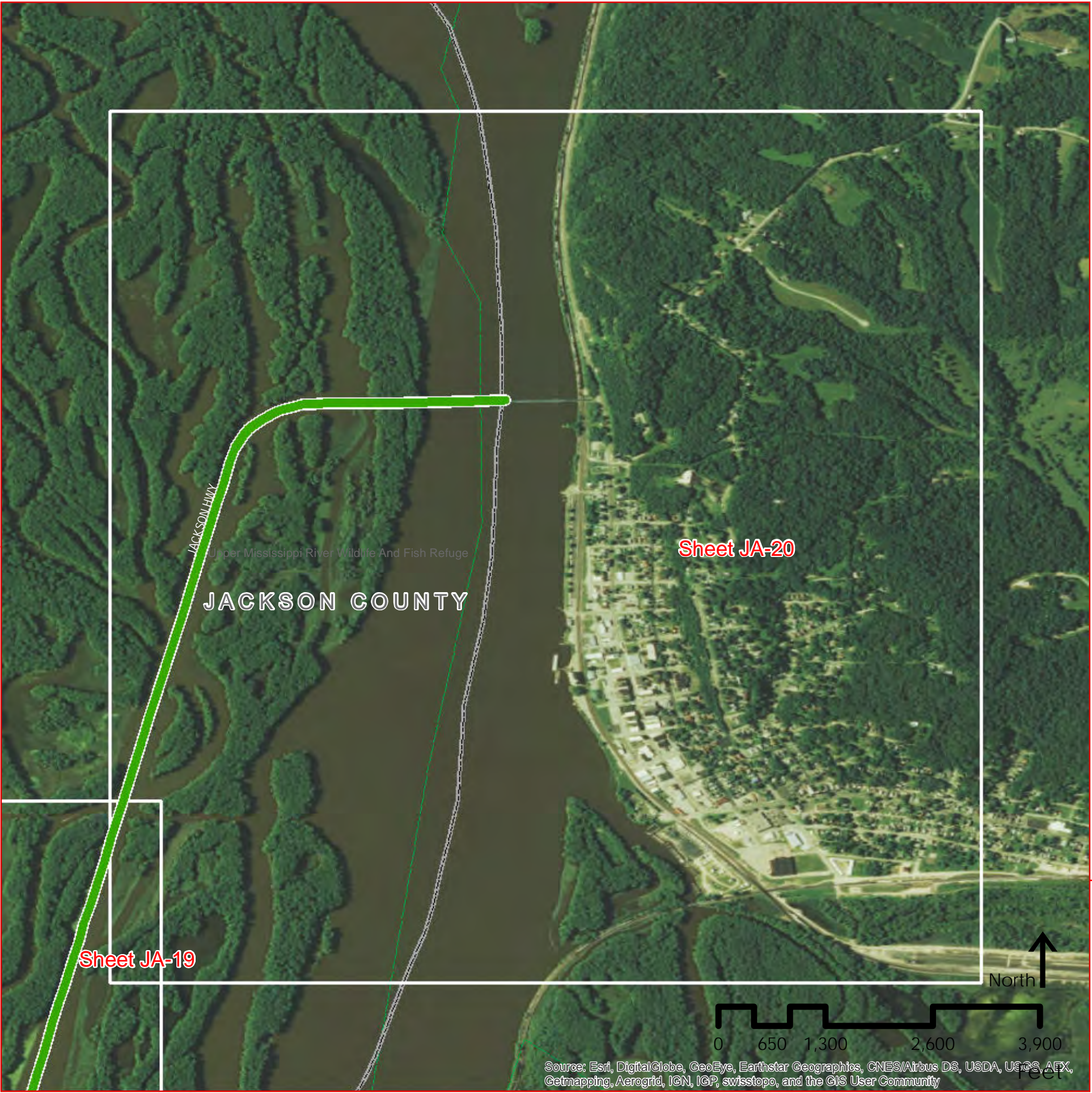


State Location



Jackson County

Sheet JA 19 of 29



Source: Esri, DigitalGlobe, GeoEye, Earthstar Geographics, CNES/Airbus DS, USDA, USGS, AFX, Getmapping, Aerogrid, IGN, IGP, swisstopo, and the GIS User Community

Iowa Great River Road National Scenic Byway



Intrinsic Resources

DAVID L. DAHLQUIST ASSOCIATES, LLC

Origin of geo-data: Iowa DOT, ESRI, Inc., and David L. Dahlquist Associates.

The opinions, findings, and conclusions expressed in this publication are those of the author and not necessarily those of the Iowa Department of Transportation or of the Federal Highway Administration.



Legend

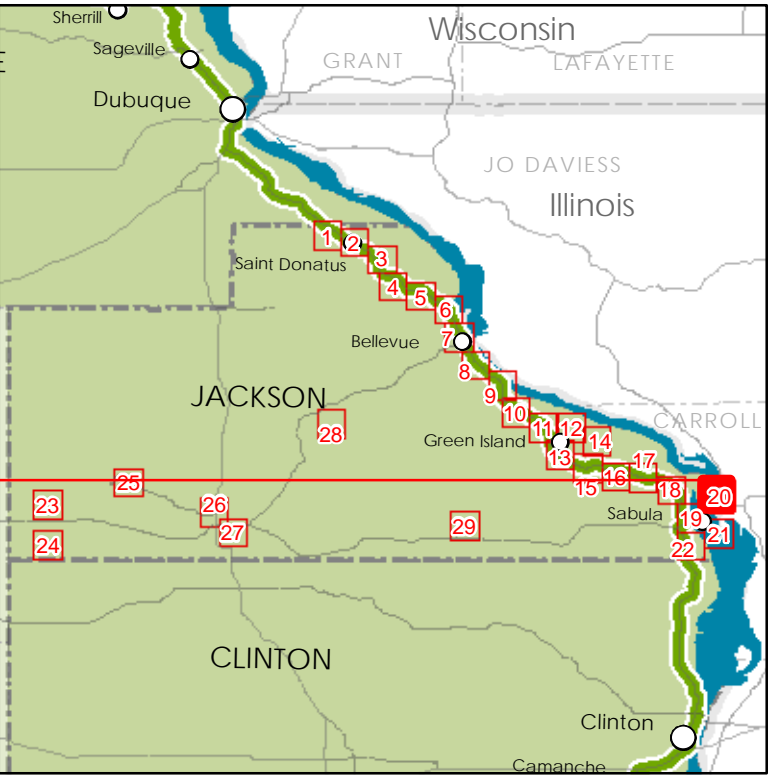
- Sc Scenic Resource
- Na Natural Resource
- Hi Historical Resource
- Ar Archeological Resource
- Cu Cultural Resource
- Re Recreational Resource
- GRR Interpretive Center
- In Interpretative Communications
- VC Visitor Center
- MR Mississippi River Access or View
- SA Supplemental Attraction
- Iowa Great River Road

This document issued on:
Sunday, May 10, 2015

County Abbreviations

- AL Allamakee
- CY Clayton
- DU Dubuque
- JA Jackson
- CL Clinton
- SC Scott
- MU Muscatine
- LO Louisa
- DM Des Moines
- LE Lee

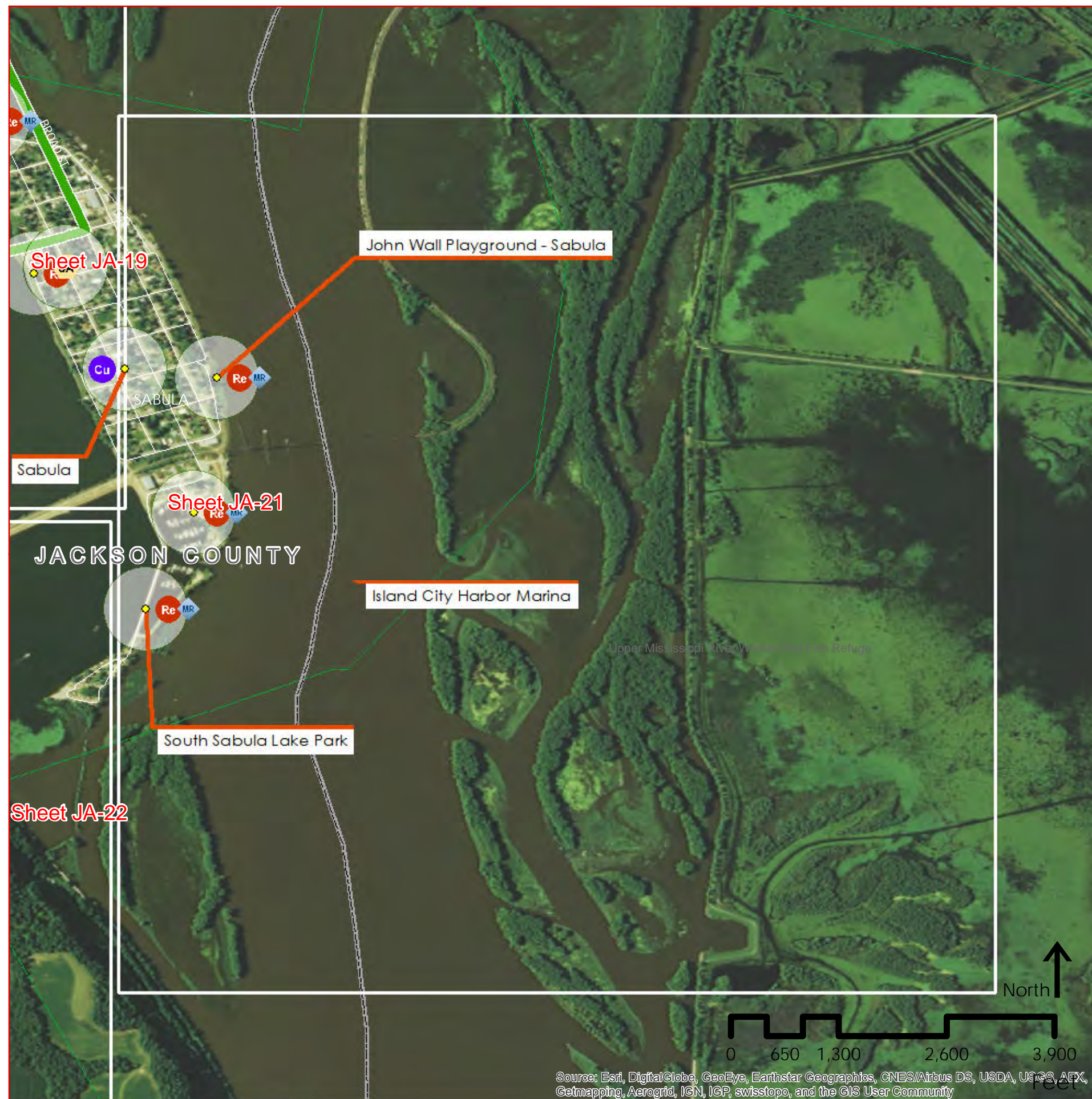
County Location



State Location



Jackson County
Sheet JA 20 of 29



Iowa Great River Road National Scenic Byway



Intrinsic Resources

DAVID L. DAHLQUIST ASSOCIATES, LLC

Origin of geo-data: Iowa DOT, ESRI, Inc., and David L. Dahlquist Associates.

The opinions, findings, and conclusions expressed in this publication are those of the author and not necessarily those of the Iowa Department of Transportation or of the Federal Highway Administration.



This document issued on:
Sunday, May 10, 2015

County
Abbreviations

AL Allamakee
CY Clayton
DU Dubuque
JA Jackson
CL Clinton
SC Scott
MU Muscatine
LO Louisa
DM Des Moines
LE Lee

Legend

- Sc Scenic Resource
- Na Natural Resource
- Hi Historical Resource
- Ar Archeological Resource
- Cu Cultural Resource
- Re Recreational Resource
- GRR Interpretive Center
- In Interpretative Communications
- VC Visitor Center
- MR Mississippi River Access or View
- SA Supplemental Attraction
- Iowa Great River Road

County Location



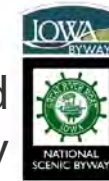
State Location



Jackson County
Sheet JA 21 of 29



Iowa Great River Road National Scenic Byway



Intrinsic Resources

DAVID L. DAHLQUIST ASSOCIATES, LLC

Origin of geo-data: Iowa DOT, ESRI, Inc., and David L. Dahlquist Associates.

The opinions, findings, and conclusions expressed in this publication are those of the author and not necessarily those of the Iowa Department of Transportation or of the Federal Highway Administration.



This document issued on:
Sunday, May 10, 2015

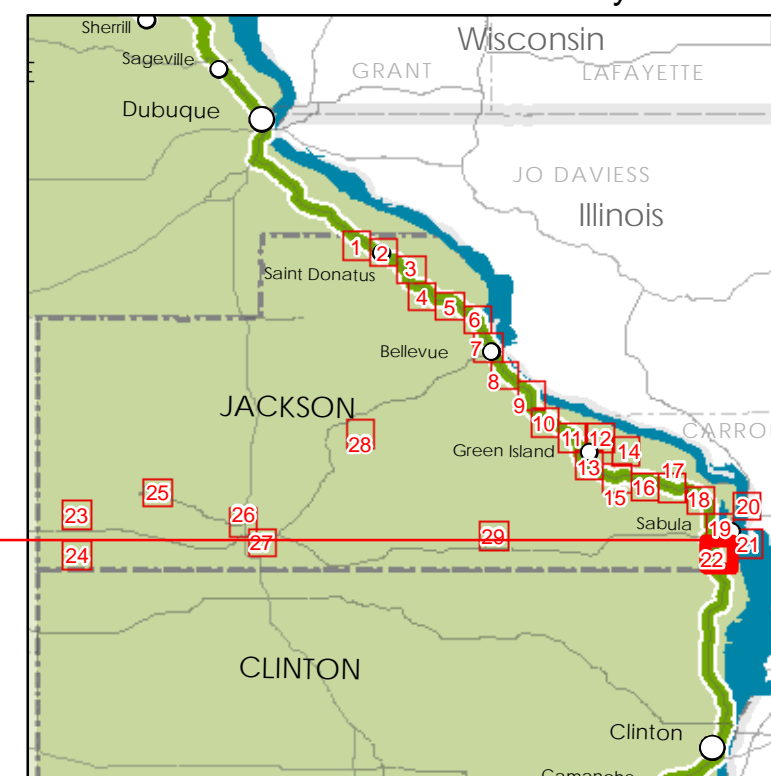
County
Abbreviations

AL Allamakee
CY Clayton
DU Dubuque
JA Jackson
CL Clinton
SC Scott
MU Muscatine
LO Louisa
DM Des Moines
LE Lee

Legend

- Sc Scenic Resource
- Na Natural Resource
- Hi Historical Resource
- Ar Archeological Resource
- Cu Cultural Resource
- Re Recreational Resource
- GRR Interpretive Center
- In Interpretative Communications
- VC Visitor Center
- MR Mississippi River Access or View
- SA Supplemental Attraction
- Iowa Great River Road

County Location



State Location



Jackson County
Sheet JA 22 of 29



Source: Esri, DigitalGlobe, GeoEye, Earthstar Geographics, CNES/Airbus DS, USDA, USGS, AEX, Getmapping, Aerogrid, IGN, IGP, swisstopo, and the GIS User Community

Iowa Great River Road National Scenic Byway



Intrinsic Resources

DAVID L. DAHLQUIST ASSOCIATES, LLC

Origin of geo-data: Iowa DOT, ESRI, Inc., and David L. Dahlquist Associates.

The opinions, findings, and conclusions expressed in this publication are those of the author and not necessarily those of the Iowa Department of Transportation or of the Federal Highway Administration.



Legend

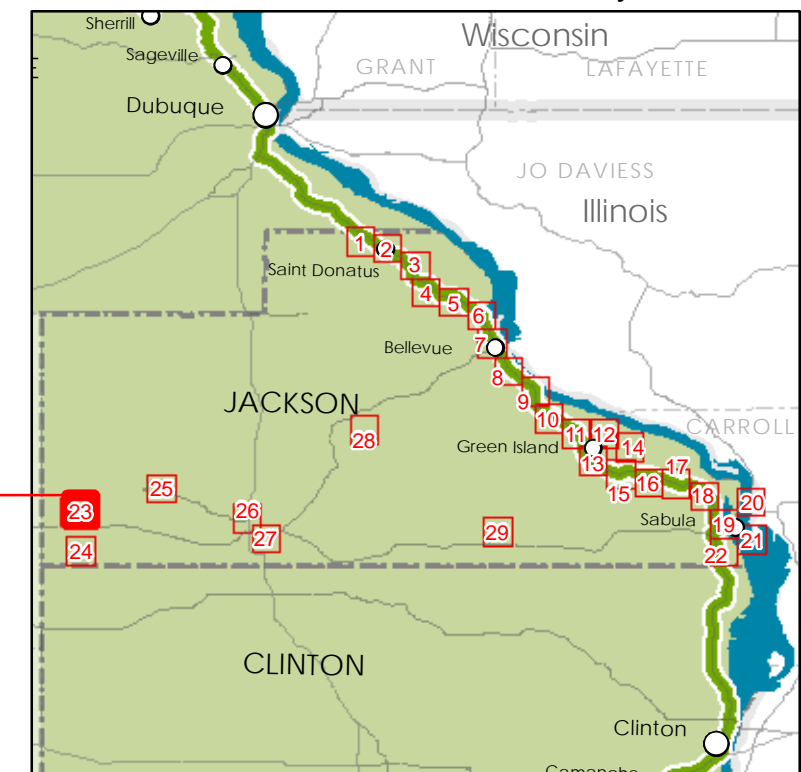
- Sc Scenic Resource
- Na Natural Resource
- Hi Historical Resource
- Ar Archeological Resource
- Cu Cultural Resource
- Re Recreational Resource
- GRR Interpretive Center
- In Interpretative Communications
- VC Visitor Center
- MR Mississippi River Access or View
- SA Supplemental Attraction
- Iowa Great River Road

This document issued on:
Sunday, May 10, 2015

County Abbreviations

- AL Allamakee
- CY Clayton
- DU Dubuque
- JA Jackson
- CL Clinton
- SC Scott
- MU Muscatine
- LO Louisa
- DM Des Moines
- LE Lee

County Location



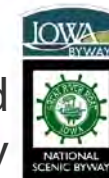
State Location



Jackson County
Sheet JA 23 of 29



Iowa Great River Road National Scenic Byway



Intrinsic Resources

DAVID L. DAHLQUIST ASSOCIATES, LLC

Origin of geo-data: Iowa DOT, ESRI, Inc., and David L. Dahlquist Associates.

The opinions, findings, and conclusions expressed in this publication are those of the author and not necessarily those of the Iowa Department of Transportation or of the Federal Highway Administration.



Legend

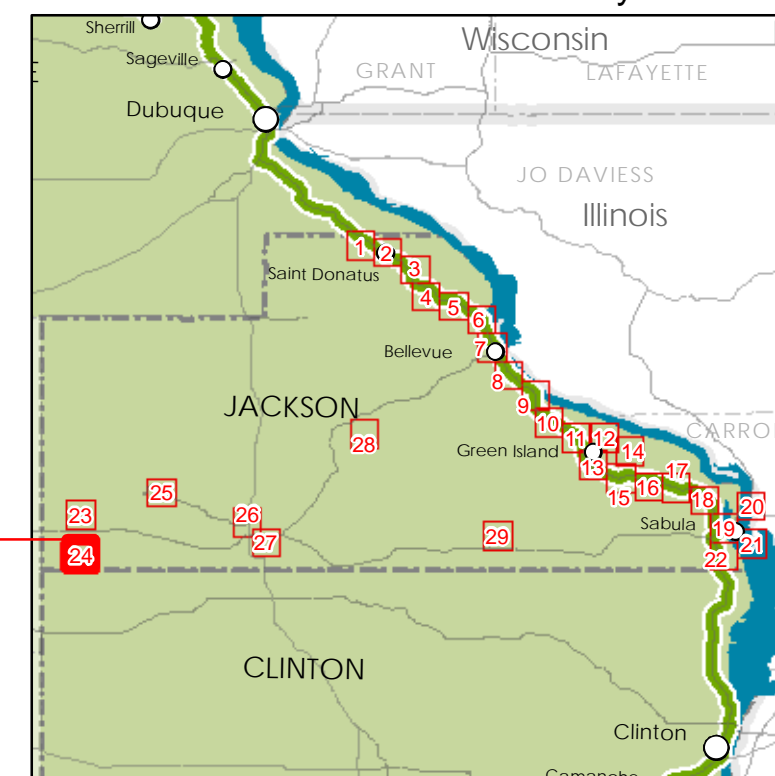
- Sc Scenic Resource
- Na Natural Resource
- Hi Historical Resource
- Ar Archeological Resource
- Cu Cultural Resource
- Re Recreational Resource
- GRR Interpretive Center
- In Interpretative Communications
- VC Visitor Center
- MR Mississippi River Access or View
- SA Supplemental Attraction
- Iowa Great River Road

This document issued on:
Sunday, May 10, 2015

County Abbreviations

AL Allamakee
CY Clayton
DU Dubuque
JA Jackson
CL Clinton
SC Scott
MU Muscatine
LO Louisa
DM Des Moines
LE Lee

County Location



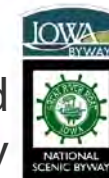
State Location



Jackson County
Sheet JA 24 of 29



Iowa Great River Road National Scenic Byway



Intrinsic Resources

DAVID L. DAHLQUIST ASSOCIATES, LLC

Origin of geo-data: Iowa DOT, ESRI, Inc., and David L. Dahlquist Associates.

The opinions, findings, and conclusions expressed in this publication are those of the author and not necessarily those of the Iowa Department of Transportation or of the Federal Highway Administration.



Legend

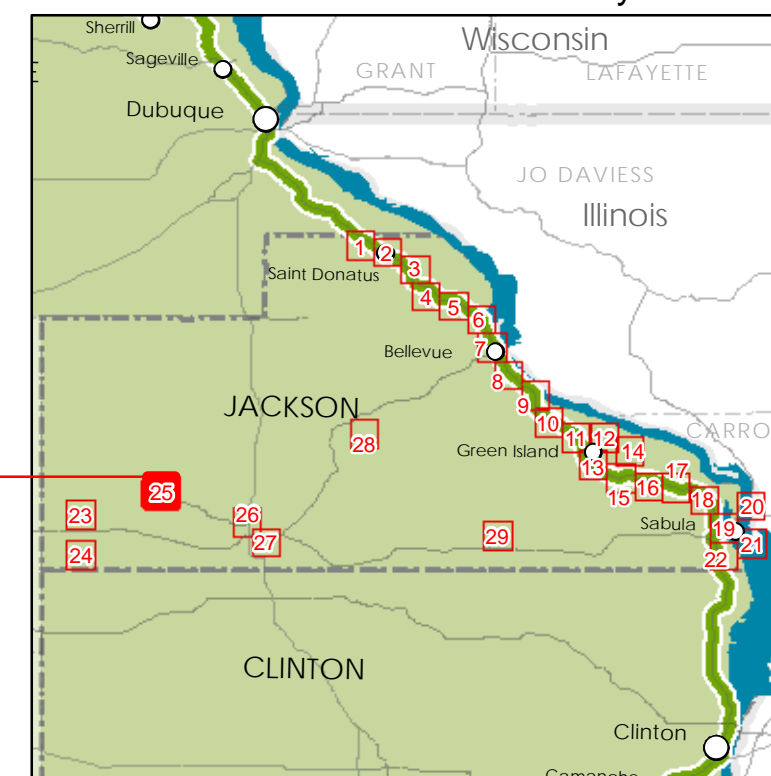
- Sc Scenic Resource
- Na Natural Resource
- Hi Historical Resource
- Ar Archeological Resource
- Cu Cultural Resource
- Re Recreational Resource
- GRR Interpretive Center
- In Interpretative Communications
- VC Visitor Center
- MR Mississippi River Access or View
- SA Supplemental Attraction
- Iowa Great River Road

This document issued on:
Sunday, May 10, 2015

County Abbreviations

AL Allamakee
CY Clayton
DU Dubuque
JA Jackson
CL Clinton
SC Scott
MU Muscatine
LO Louisa
DM Des Moines
LE Lee

County Location



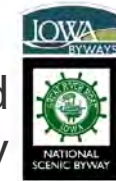
State Location



Jackson County
Sheet JA 25 of 29



Iowa Great River Road National Scenic Byway



Intrinsic Resources

DAVID L. DAHLQUIST ASSOCIATES, LLC

Origin of geo-data: Iowa DOT, ESRI, Inc., and David L. Dahlquist Associates.

The opinions, findings, and conclusions expressed in this publication are those of the author and not necessarily those of the Iowa Department of Transportation or of the Federal Highway Administration.



This document issued on:
Sunday, May 10, 2015

County
Abbreviations

AL Allamakee
CY Clayton
DU Dubuque
JA Jackson
CL Clinton
SC Scott
MU Muscatine
LO Louisa
DM Des Moines
LE Lee

Legend

- Sc Scenic Resource
- Na Natural Resource
- Hi Historical Resource
- Ar Archeological Resource
- Cu Cultural Resource
- Re Recreational Resource
- GRR Interpretive Center
- In Interpretative Communications
- VC Visitor Center
- MR Mississippi River Access or View
- SA Supplemental Attraction
- Iowa Great River Road

County Location



State Location



Jackson County
Sheet JA 26 of 29



Iowa Great River Road National Scenic Byway

Intrinsic Resources

DAVID L. DAHLQUIST ASSOCIATES, LLC

Origin of geo-data: Iowa DOT, ESRI, Inc., and David L. Dahlquist Associates.

The opinions, findings, and conclusions expressed in this publication are those of the author and not necessarily those of the Iowa Department of Transportation or of the Federal Highway Administration.



This document issued on:
Sunday, May 10, 2015

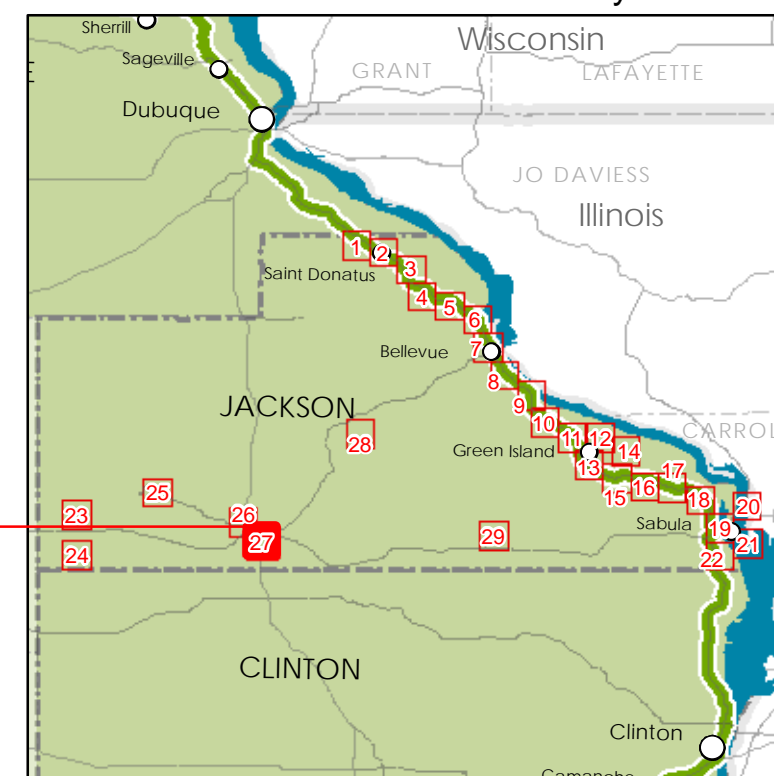
County
Abbreviations

AL Allamakee
CY Clayton
DU Dubuque
JA Jackson
CL Clinton
SC Scott
MU Muscatine
LO Louisa
DM Des Moines
LE Lee

Legend

- Sc Scenic Resource
- Na Natural Resource
- Hi Historical Resource
- Ar Archeological Resource
- Cu Cultural Resource
- Re Recreational Resource
- GRR Interpretive Center
- In Interpretative Communications
- VC Visitor Center
- MR Mississippi River Access or View
- SA Supplemental Attraction
- Iowa Great River Road

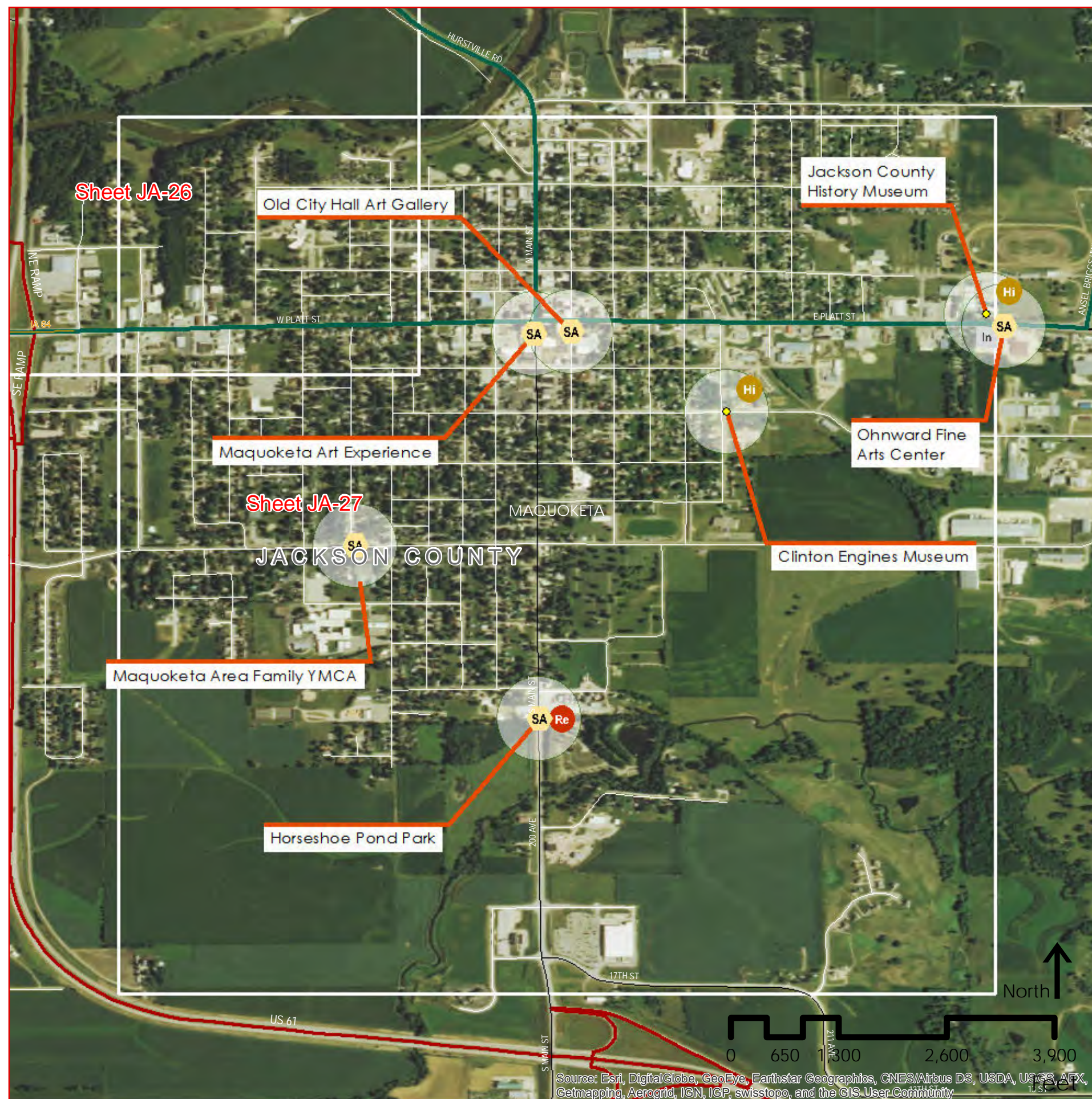
County Location



State Location



Jackson County
Sheet JA 27 of 29



Source: Esri, DigitalGlobe, GeoEye, Earthstar Geographics, CNES/Airbus DS, USDA, USGS, AFX, Getmapping, Aerogrid, IGN, IGP, swisstopo, and the GIS User Community



Iowa Great River Road National Scenic Byway



Intrinsic Resources

DAVID L. DAHLQUIST ASSOCIATES, LLC

Origin of geo-data: Iowa DOT, ESRI, Inc., and David L. Dahlquist Associates.

The opinions, findings, and conclusions expressed in this publication are those of the author and not necessarily those of the Iowa Department of Transportation or of the Federal Highway Administration.



Legend

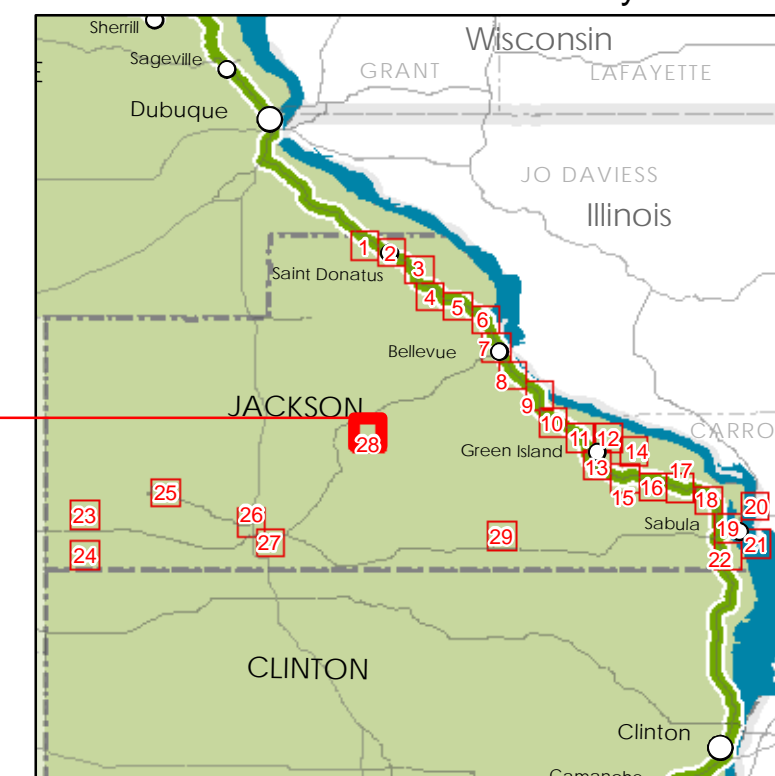
- Sc Scenic Resource
- Na Natural Resource
- Hi Historical Resource
- Ar Archeological Resource
- Cu Cultural Resource
- Re Recreational Resource
- GRR Interpretive Center
- In Interpretative Communications
- VC Visitor Center
- MR Mississippi River Access or View
- SA Supplemental Attraction
- Iowa Great River Road

This document issued on:
Sunday, May 10, 2015

County Abbreviations

AL Allamakee
CY Clayton
DU Dubuque
JA Jackson
CL Clinton
SC Scott
MU Muscatine
LO Louisa
DM Des Moines
LE Lee

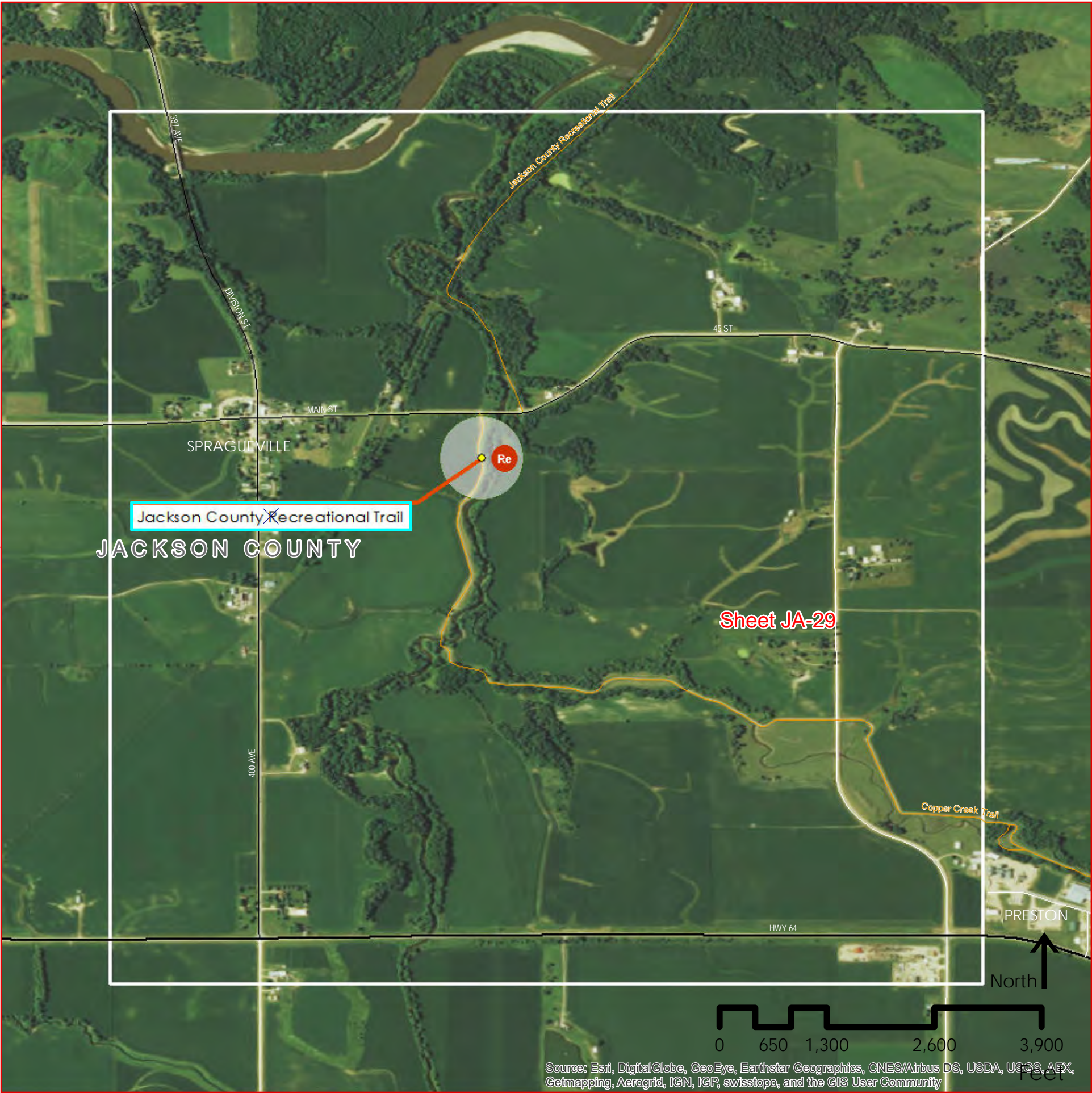
County Location



State Location



Jackson County
Sheet JA 28 of 29



Source: Esri, DigitalGlobe, GeoEye, Earthstar Geographics, CNES/Airbus DS, USDA, USGS, AEX, Getmapping, Aerogrid, IGN, IGP, swisstopo, and the GIS User Community

Iowa Great River Road National Scenic Byway



Intrinsic Resources

DAVID L. DAHLQUIST ASSOCIATES, LLC

Origin of geo-data: Iowa DOT, ESRI, Inc., and David L. Dahlquist Associates.

The opinions, findings, and conclusions expressed in this publication are those of the author and not necessarily those of the Iowa Department of Transportation or of the Federal Highway Administration.



Legend

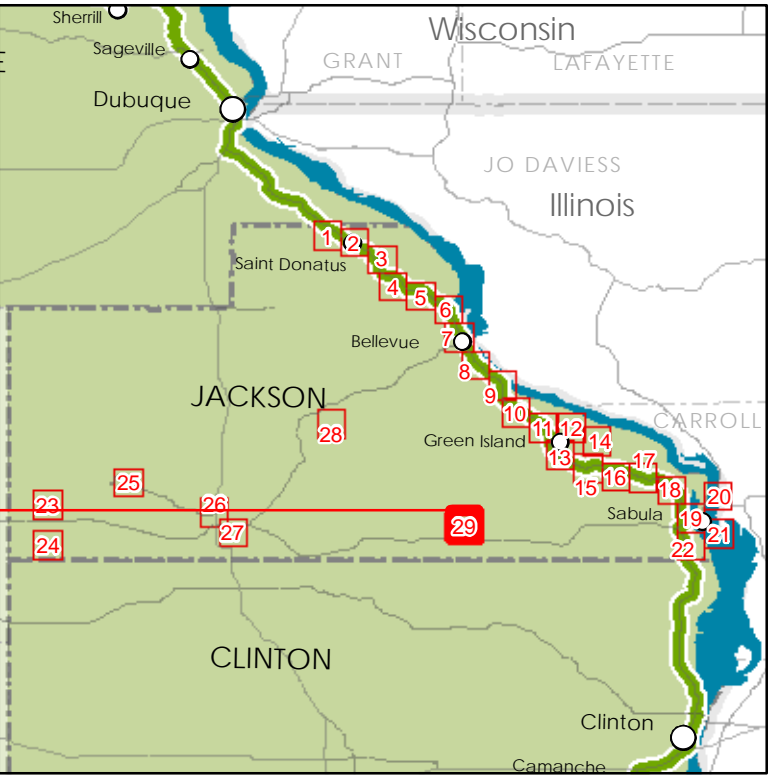
- Sc Scenic Resource
- Na Natural Resource
- Hi Historical Resource
- Ar Archeological Resource
- Cu Cultural Resource
- Re Recreational Resource
- GRR Interpretive Center
- In Interpretative Communications
- VC Visitor Center
- MR Mississippi River Access or View
- SA Supplemental Attraction
- Iowa Great River Road

This document issued on:
Sunday, May 10, 2015

County Abbreviations

- AL Allamakee
- CY Clayton
- DU Dubuque
- JA Jackson
- CL Clinton
- SC Scott
- MU Muscatine
- LO Louisa
- DM Des Moines
- LE Lee

County Location



Jackson County
Sheet JA 29 of 29

State Location

