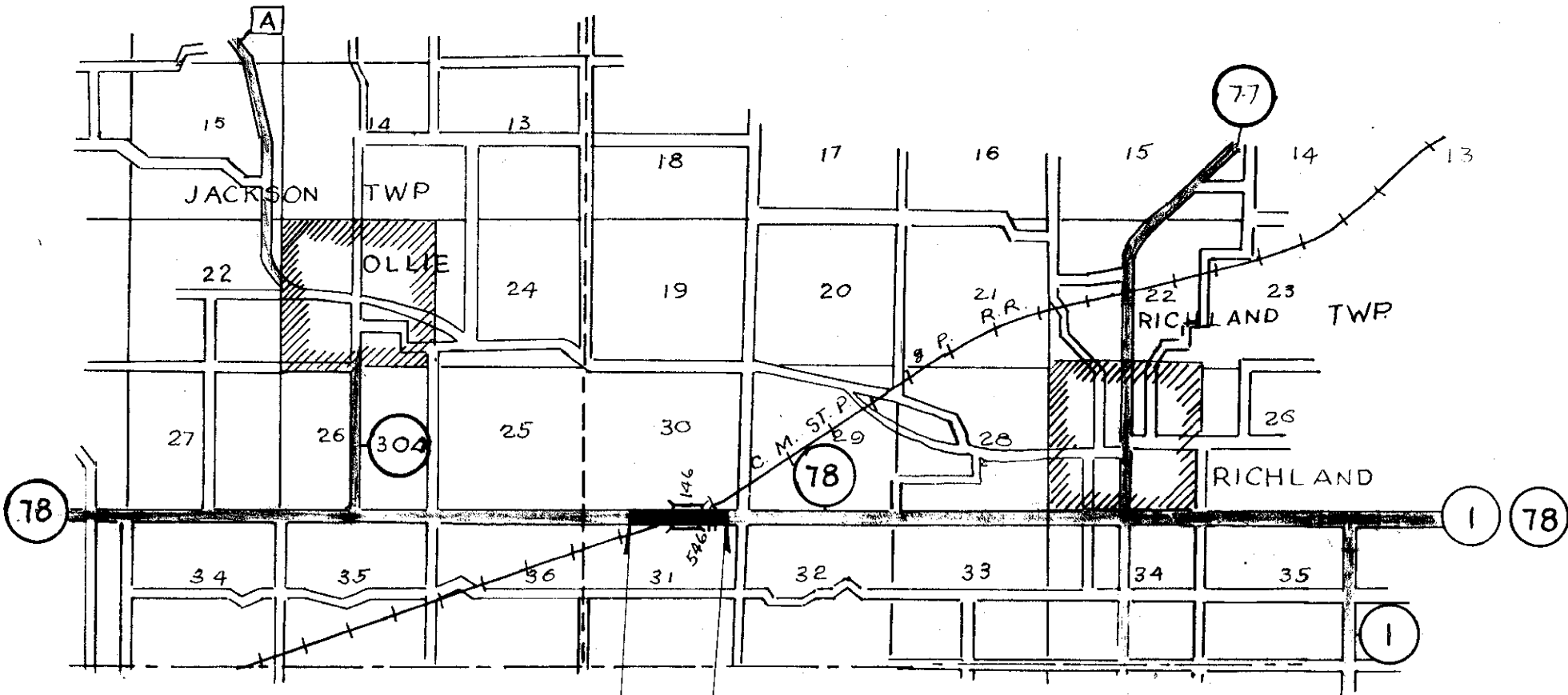


R. 11 W.

R. 10 W.

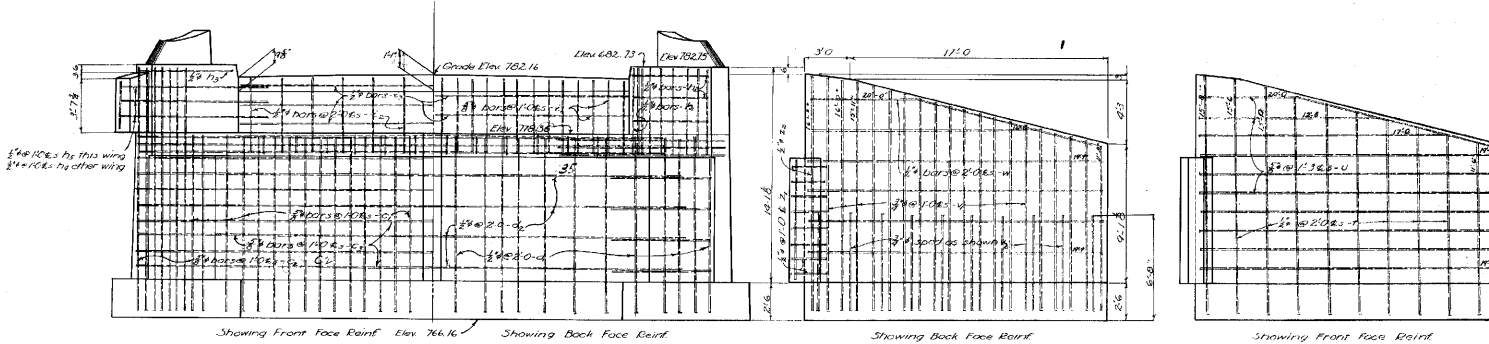
T. 74 N.



STA 450 + 00
BEG. OF PROJ.

STA 475 + 00
END OF PROJ.

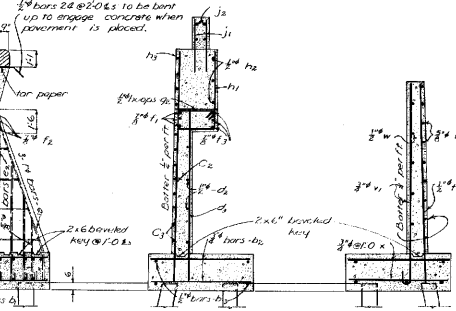
Bench Mark No 43 Sta 459+90 RR Spike in S Root of 48" Elm 19' RR Elev 711.00



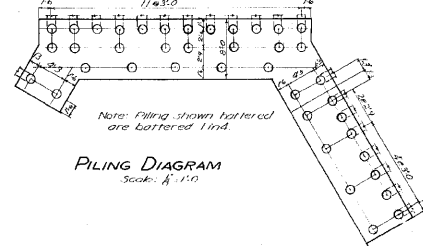
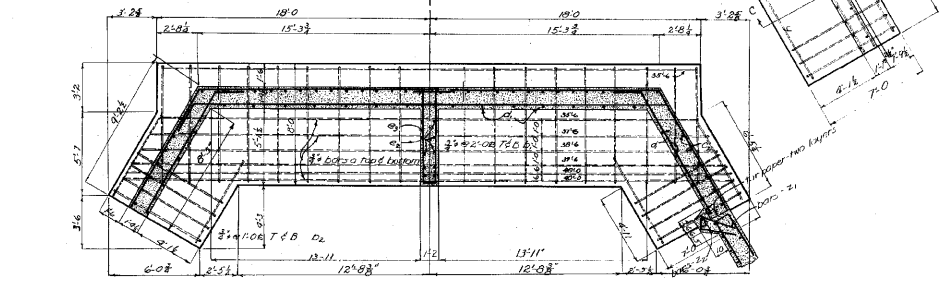
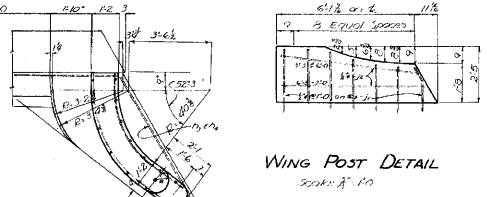
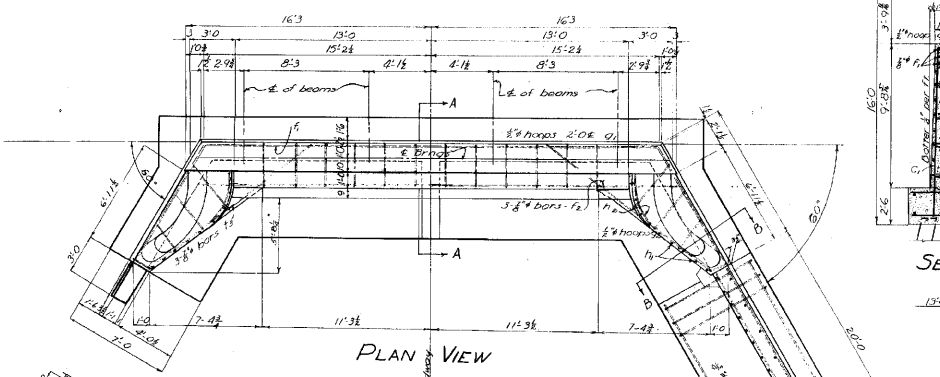
REAR ELEVATION
With Wing Removed

ELEVATION OF WING

Concrete block to be removed when pavement is placed



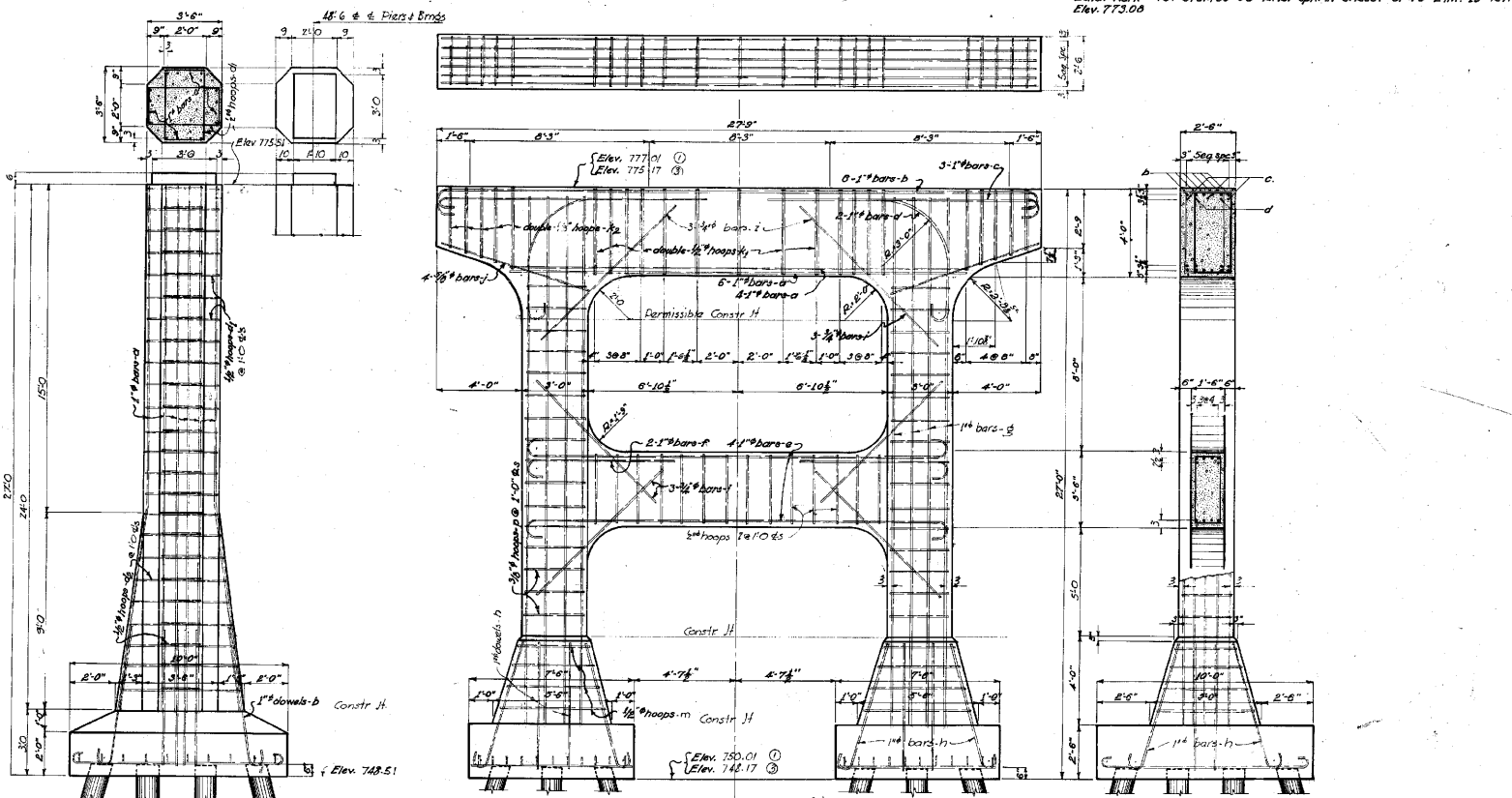
SECT. A-A SECT. B-B SECT. C-C



BILL OF REINFORCING						
Mark	Location	Size	Num	Length	Shape	Weight
a	Main Fly Lign	#4	14	Var	—	400
b	" " " "	#3	36	7.4	—	419
b ₁	" " " "	#3	16	6.9	—	162
b ₂	" " " "	#3	0	7.0	—	37
c	Breast Wall F.F.V.	#3	30	11.0	—	370
c ₁	Wing Walls F.F.V.	#3	14	16.2	—	230
c ₂	Breast " A.F.V.	#3	16	23.0	—	417
c ₃	" " B.F.V.	#3	22	11.10	—	294
c ₄	" " B.F.V.	#3	9	24.4	—	92
d	Wing Wall	#3	8	11.0	—	59
e	Counter-Pl. Reinforcement Bars	#4	3	15.0	—	120
e ₁	" Vertical "	#4	10	Var	—	89
e ₂	" Horizontal "	#4	4	Var	—	46
f	Bridge Seat Length F.F.	#3	6	25.6	—	302
f ₁	" " " "	#3	3	32.4	—	199
f ₂	" " " "	#3	6	14.0	—	172
g	" " " "	#3	12	7.9	—	63
g ₁	" " " "	#3	6	Var	—	44
h	Wing Post Base B.F.V.	#3	18	6.3	—	75
h ₁	" " " "	#3	6	8.4	—	35
h ₂	" " " "	#3	2	9.9	—	13
h ₃	" " " "	#3	3	12.0	—	23
h ₄	" " " "	#3	3	15.0	—	29
h ₅	N. Wing Overhang V.	#3	2	3.4	—	1
h ₆	" " " "	#3	3	4.0	—	10
i	Backwall F.F.V.	#3	26	5.6	—	189
i ₁	" " " "	#3	13	6.10	—	42
j	Wing Post B.F.V.	#3	5	25.0	—	86
j ₁	" " " "	#3	28	4.0	—	72
j ₂	" " " "	#3	8	Var	—	31
k	Pavement anchors	#3	13	4.0	—	35
l	Special Wing F.F.V.	#3	10	Var	—	91
u	" " " "	#3	10	Var	—	196
v	" " " "	#3	20	Var	—	427
v ₁	" " " "	#3	10	7.0	—	105
w	" " " "	#3	6	Var	—	77
x	Top Trans F.F.V.	#3	40	6.9	—	406
y	" " " "	#3	5	19.9	—	66
z	Wing Lock H.	#3	8	5.6	—	29
z ₁	" " " "	#3	2	8.0	—	10
Reinforcing Steel-Lbs.						5427
ESTIMATED QUANTITIES						
Concrete						CY 95.1
Crested Piling 40x32						1400L
Excavation						CY 158

Design for
292' x 26' OVERHEAD CROSSING
 2-64' & 2-82' Continuous I-Beam Spans
 At Intersection of
 CM St. P. & P.R.R. & Iowa Prim No. 38
WEST ABUTMENT DETAILS
 Sta. 463+26.83 Project No. F-980(1)
 KEOKUK COUNTY
 Iowa Highway Commission
 Iowa Crossing No. 6169
 Jan. 1947 Sheet 2 of 7 Scale as noted
 Design # 146 Keokuk County File # 13451

Bench Mark #43: Sta. 439+96 R.R. Spk. in S. Roof of 4.5' Elm. 13' Rr. Elev. 773.00



General Notes:
 All concrete to be Class A. All exposed corners 90° or sharper to be filleted with $\frac{3}{8}$ " beveled strips.
 All reinforcing to be securely tied in place before concrete is placed.
 All piling to be driven to full 18 ton bearing.
 Construction to be in accordance with the 1937 specifications of the Iowa Highway Com. in conjunction with special provisions listed on sheet 1.

BILL OF REINFORCING STEEL

Item	Location	Size	No.	Length	Shape	Weight
PIERS 1 & 2 (TWO PIERS)						
a	Beam Length Bottom	1" #	20	20'-0"		105.8
b	" " Top	1" #	12	22'-5"		58.1
c	" " " "	1" #	12	19'-6"		49.2
d	" " " "	1" #	6	11'-0"		23.5
e	Strut Length	1" #	16	21'-5"		91.4
f	" " " "	1" #	8	7'-9"		16.5
g	Columns Vertical	1" #	52	24'-4"		363.4
h	Pedestals	1" #	48	6'-9"		86.4
i	Beam & Strut Filler	3/8" #	36	4'-6"		16.0
j	Carrierver Bottom	3/8" #	16	7'-0"		11.7
k	Beam Hoops	1/2" #	52	11'-3"		39.0
l	Carriever	1/2" #	44	10'-0"		26.4
m	Strut	1/2" #	28	9'-0"		16.0
n	Pedestal	1/2" #	16	16'-0"		17.1
o	Footing Length	3/8" #	44	16'-11"		50.5
p	Tram	3/8" #	20	7'-5"		15.7
q	Column Hoops	3/8" #	64	10'-0"		24.1
						1072.0
PIERS 3 (TWO PIERS)						
a	Shaft Vertical	1" #	32	23'-0"		202.0
b	Footing Details	1" #	32	12'-6"		106.7
c	Footing Horiz.	3/8" #	40	11'-3"		67.5
d	Shaft Hoops	1/2" #	60	10'-0"		40.0
de	" " " "	1/2" #	36	12'-6"		30.0
						447.2

ESTIMATED QUANTITIES

Part	Piers 1 & 2	Piers 3	Total
Concrete	81.8 cu.	12.5	124.3 cu.
Reinf. Steel	1072.0 lbs	447.2 lbs	1519.2 lbs
Crea. Piling	48 @ 35'	32 @ 35'	2800 LF
Excav. Cl. I	304 cu.	12.5 cu.	429 cu.
Excav. Cl. II			

Design For
292'x26' OVERHEAD CROSSING
 26'-2-02" CONTINUOUS I-BEAM SPANS
 INTERSECTION
 C.M. ST. P. & R.R. AND IOWA PRM. No. 378
STRUCTURE DETAILS
 Station 439+26.00 Project No. F930 (1)
KEOKUK COUNTY
 Iowa Highway Commission
IOWA CROSSING No. 5189
 Location: Sections 30-31
 Richardson Twp.
 Keokuk Co.
 Over C.M. St. P. & R.R.
 Scale 3/8" = 1'-0"

