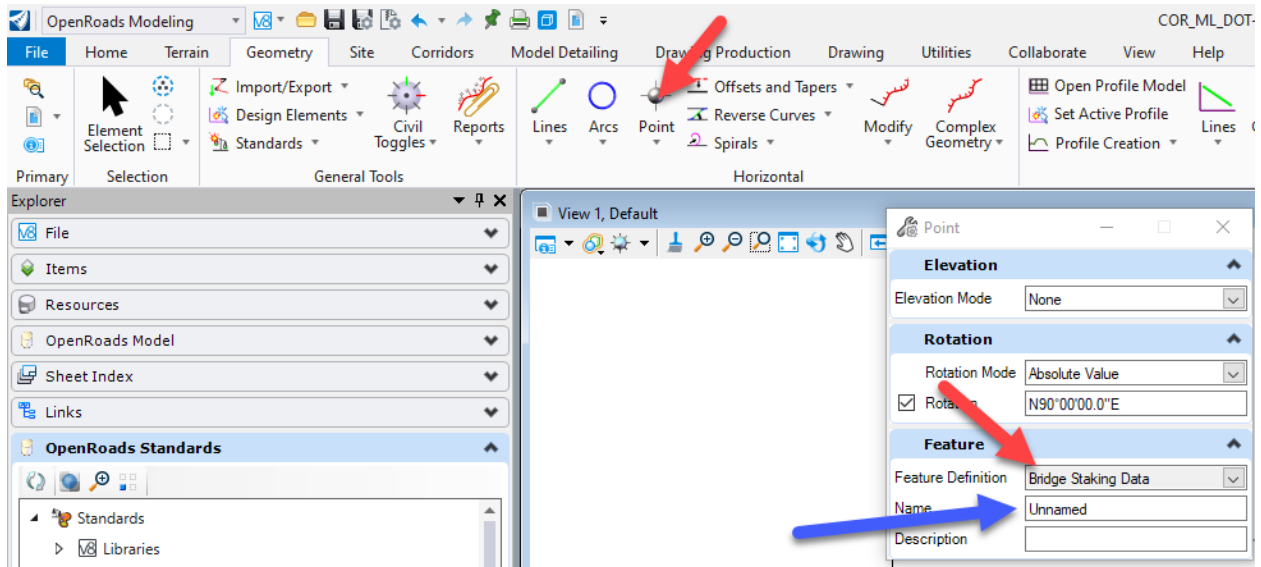


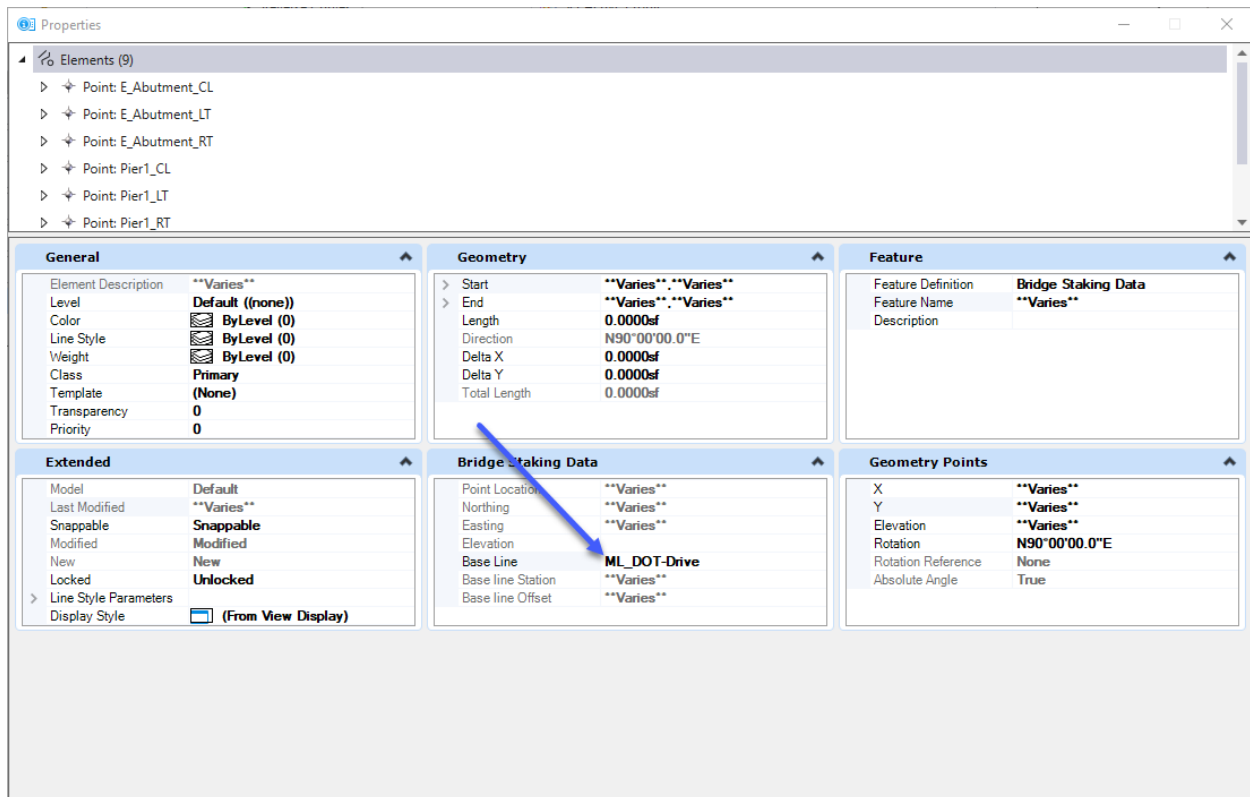
Automated Bridge Staking report

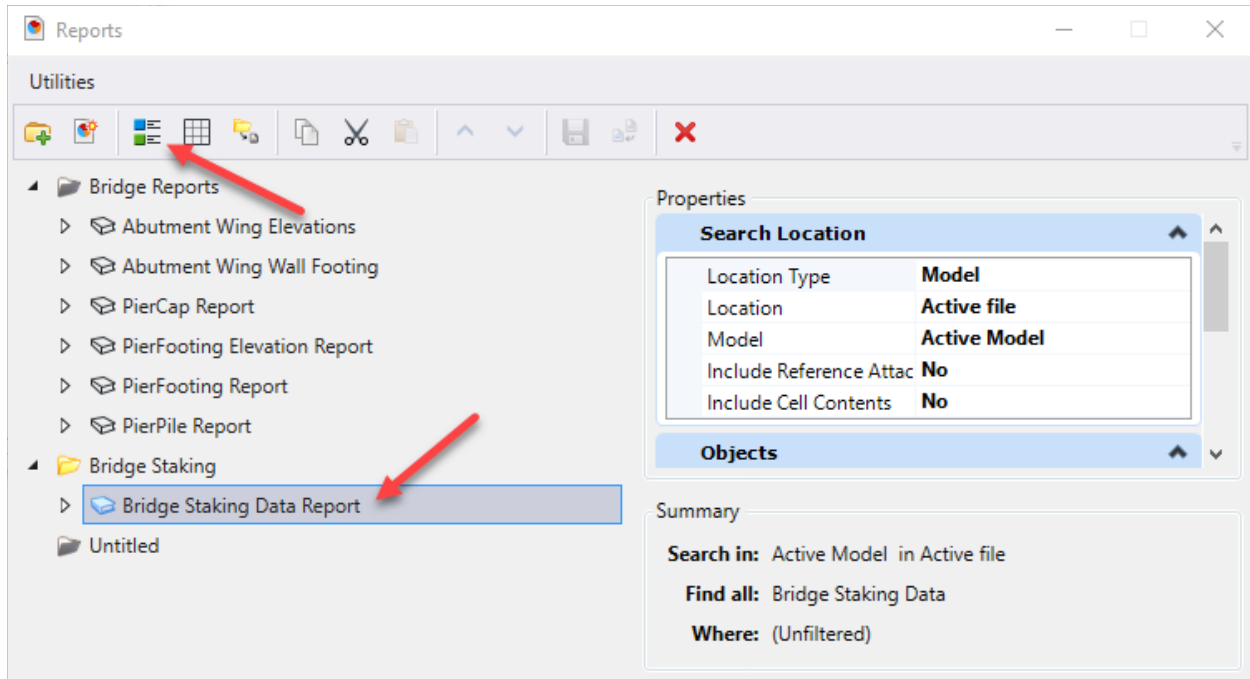
Place a Civil Point on the Feature Definition: **Bridge Staking Data**



The name of the feature is used to populate the point location in the report. Set it to be the location (i.e. Pier1_CL)

Select all the points placed with this feature. Then type in the name of the base line chain.





The report finds all elements in the file that have the Item Type Bridge Staking Data.

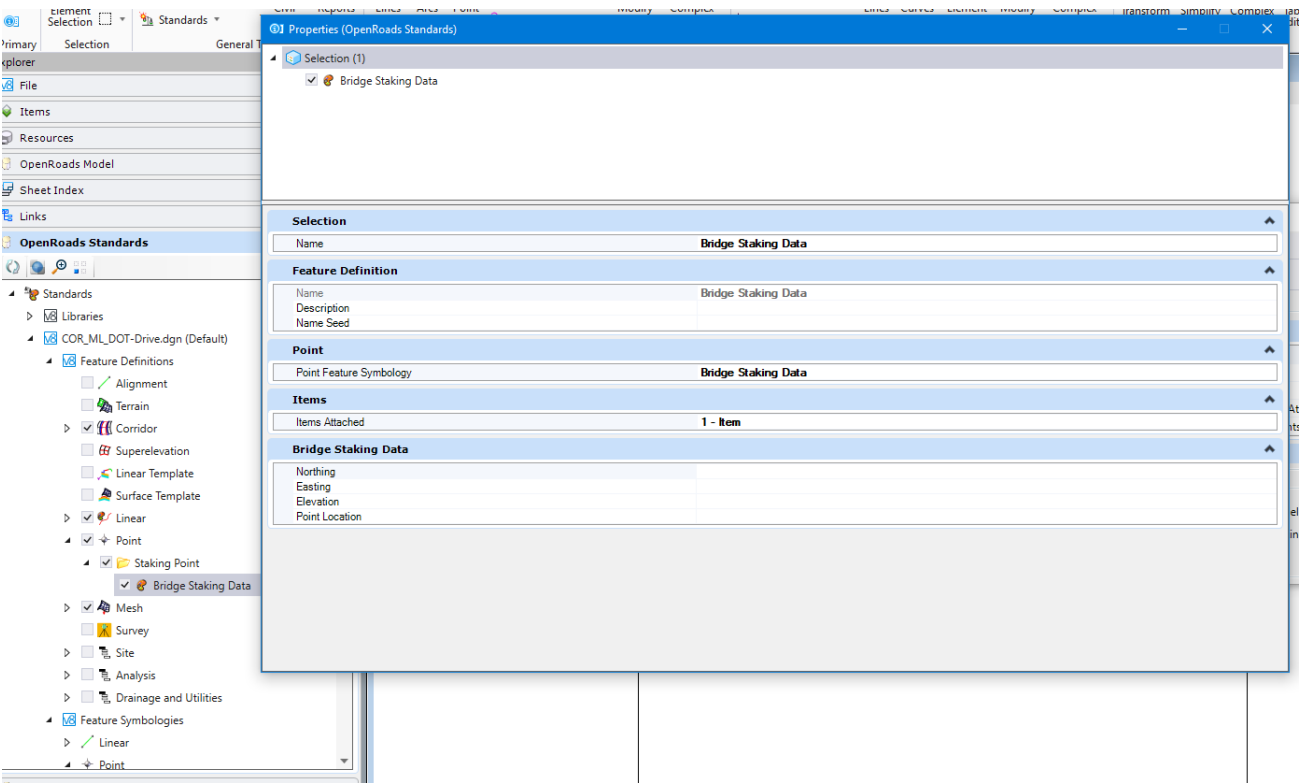
This is the report preview.

Bridge Staking Data Report						
Total Results: 9						
Drag a column header and drop it here to group by that column						
Point Location ▼	Northing ▼	Easting ▼	Elevation ▼	Base line Station ▼	Base line Offset ▼	
W-Abutment_LT	7645353.155	18525489.436		102+50.00	-20.00	
W_Abutment_RT	7645313.155	18525489.426		102+50.00	20.00	
W_Abutment_CL	7645333.155	18525489.431		102+50.00	.00	
E_Abutment_LT	7645353.080	18525789.436		105+50.00	-20.00	
E_Abutment_CL	7645333.080	18525789.431		105+50.00	.00	
E_Abutment_RT	7645313.080	18525789.426		105+50.00	20.00	
Pier1_RT	7645313.076	18525639.426		104+00.00	20.04	
Pier1_CL	7645333.117	18525639.431		104+00.00	.00	
Pier1_LT	7645353.159	18525639.436		104+00.00	-20.04	

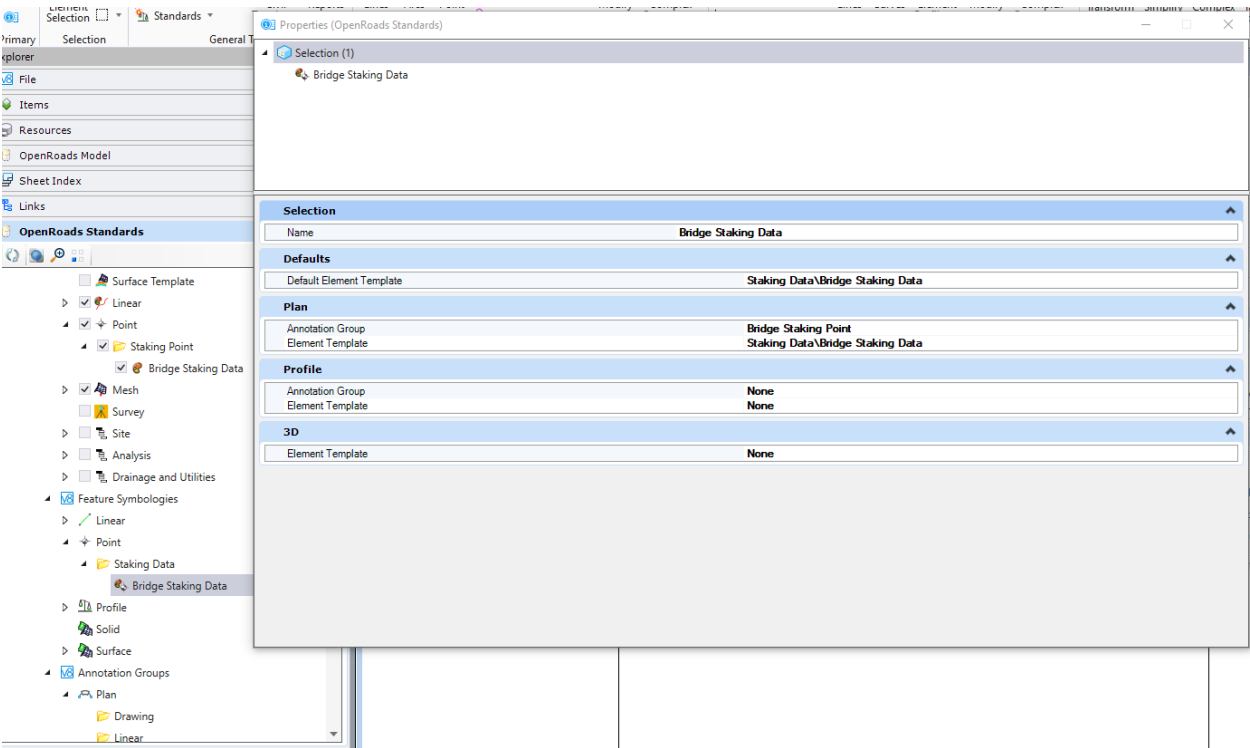


Configuration consisted of the following:

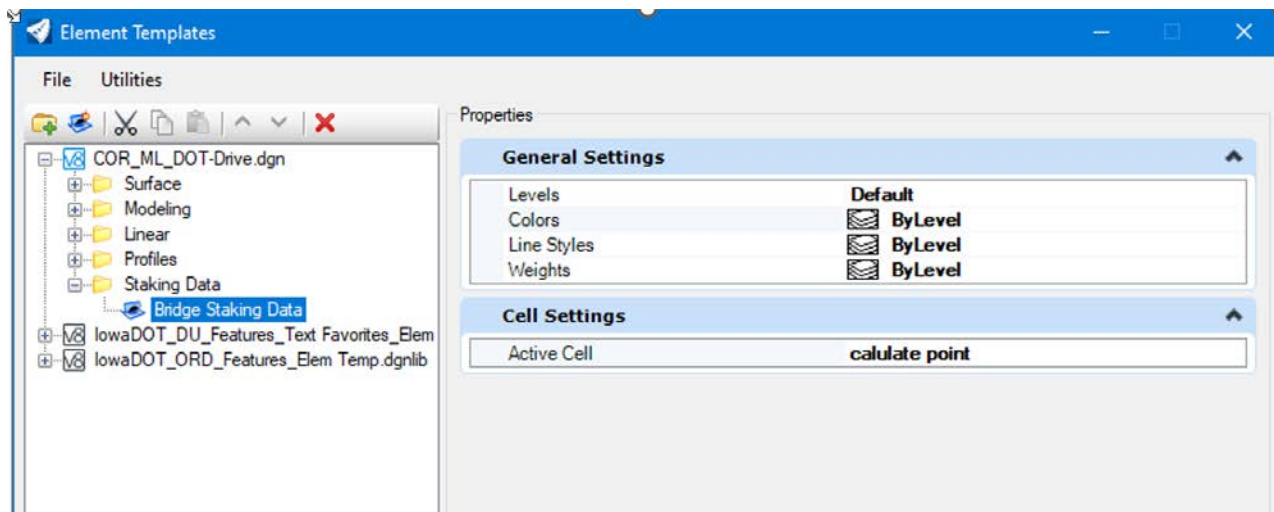
Created Point Feature Definition with Item Type for staking data attached.



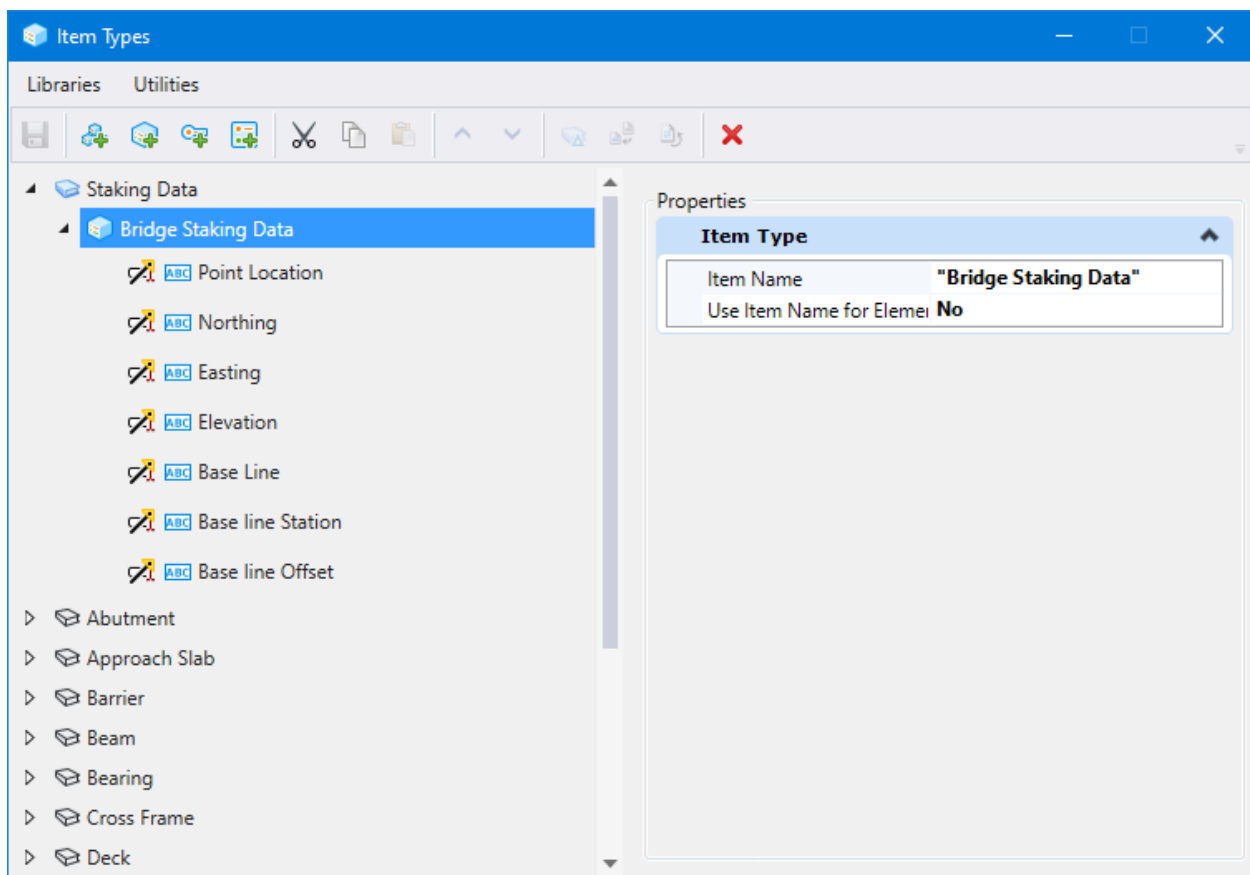
Corresponding Feature Symbology:



Corresponding Element Template:



Item Type:



Report:

Reports

Utilities

Bridge Reports

Abutment Wing Elevations

Abutment Wing Wall Footing

PierCap Report

PierFooting Elevation Report

PierFooting Report

PierPile Report

Bridge Staking

Bridge Staking Data Report

Columns

Point Location

Northing

Easting

Elevation

Base line Station

Base line Offset

Sorting Rules

Groups & Aggregates

Summarize

Untitled

Properties

Search Location

Location TypeModel

LocationActive file

ModelActive Model

Include Reference AttachNo

Include Cell ContentsNo

Objects

ShowActive File

SelectedBridge Staking Data

Filtered By(Unfiltered)

Selection

Selection TypeAll

Summarize

Summary rowShow

Summary

Search in: Active Model in Active file

Find all: Bridge Staking Data

Where: (Unfiltered)