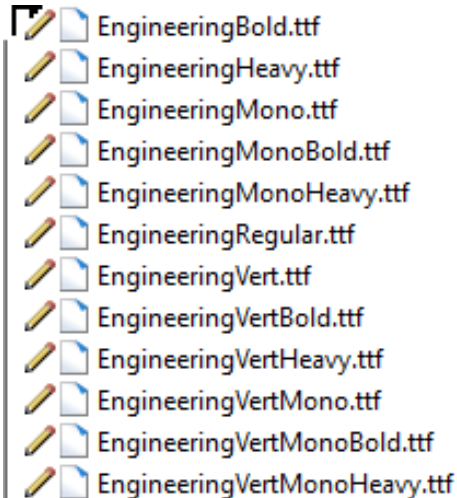


CONNECT Project Font

The TrueType Font EngineeringVert is intended to be used for CONNECT projects.

The Engineering Vert font files are located in the managed workspace at:

pw:\\ntPwInt1.dot.int.lan:PWMain\\Documents\\IowaDOTStandardsConnect\\Configuration\\Organization-Civil\\IowaDOT_Standards\\Fonts\\pw:\\NTPwint1.dot.int.lan:PWMain\\Documents\\Resources\\ClientWorkspaces\\IowaDOT\\IowaDOTProduction\\Organization-Civil\\IowaDOT_Standards\\fonts\\



True type fonts are unable to apply a weight. If a bolder text is desired use the Bold or Heavy fonts.

The text and dimension style library IowaDOT_Text Favorites_Text Styles_Dimension Styles.dgnlib in the managed workspace uses the EngineeringVert and EngineeringVertBold font.

The dgnlib is located in the managed workspace at:

pw:\\ntPwInt1.dot.int.lan:PWMain\\Documents\\IowaDOTStandardsConnect\\Configuration\\Organization-Civil\\IowaDOT_Standards\\Dgnlib\\Feature Definitions\\pw:\\NTPwint1.dot.int.lan:PWMain\\Documents\\Resources\\ClientWorkspaces\\IowaDOT\\IowaDOTProduction\\Organization-Civil\\IowaDOT_Standards\\Dgnlib\\Feature Definitions\\

The managed workspace provides access to these fonts in the Bentley applications. The upgraded ProjectWise (PW) workspace for implementation of the 10.12 versions of applications is set up with new Text and Dimension Styles, using an updated Engineering Vert font that is now mapped appropriately whereas the previous version was not.

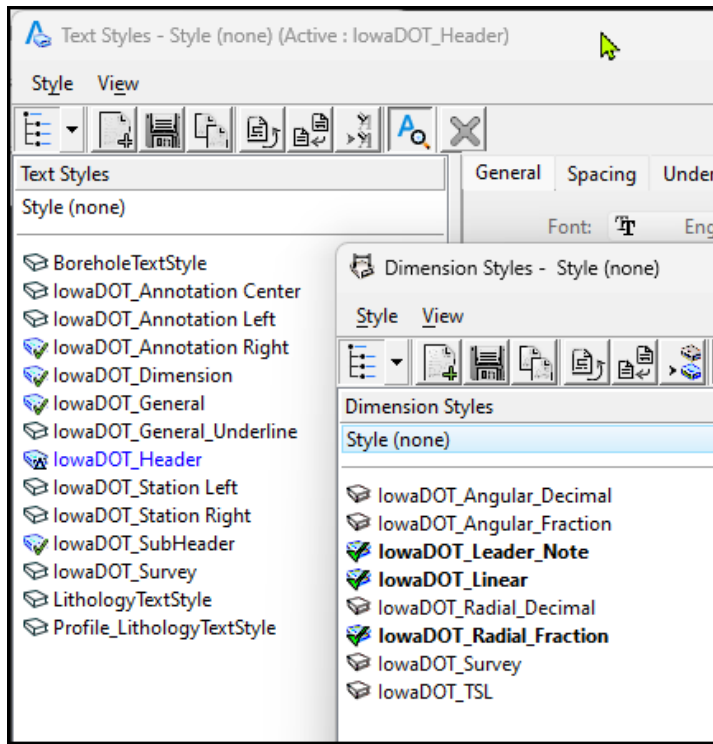
New files created in the 10.12 PW environment will require the previously installed Engineering Vert Font ttf files to be removed from the user's machine (C:\\Windows\\Fonts) to allow special characters like the centerline (CL overlapping) and plate (PL overlapping) symbols to display properly.

For existing files being actively used in the 10.12 PW environment, then it needs determined by the user to either complete the work using the existing prefixed as "IADOT" Text and Dimension Style requiring the Engineering Vert Font stored on the user's machine. Or remap existing text and dimensions to the new prefixed "IowaDOT " Text and Dimension Styles, removing the Engineering Vert Font from the user's machine. If choosing to remap to the new styles this may

require some adjustment of the text and dimensions.

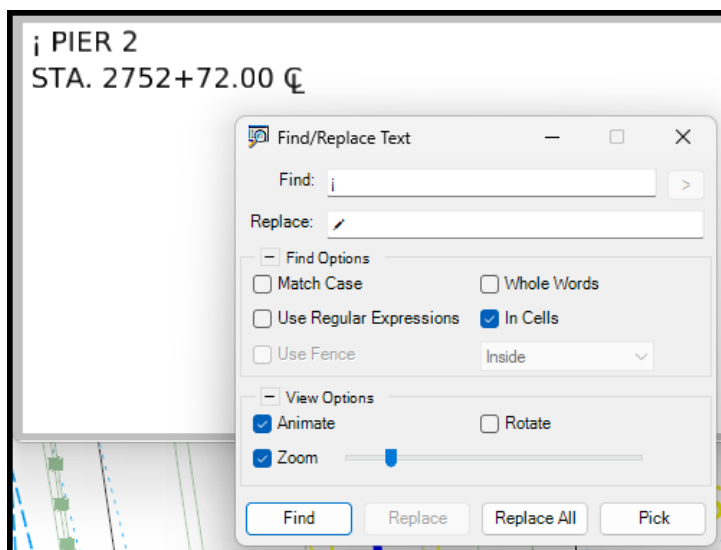
The user would need to export the font files from the workspace and copy to C:\Windows\Fonts to use these fonts in Microsoft applications.

The image below is showing the new Text and Dimension Styles in the 10.12 environment.



For special characters, use the “Find/Replace Text” tool. Select existing text to edit with “Text Editor” to copy the older previous formatted text in the **Find** location. Then place the new symbol in the “Text Editor” and copy that into the **Replace** location (*this character appears odd, see example below*).

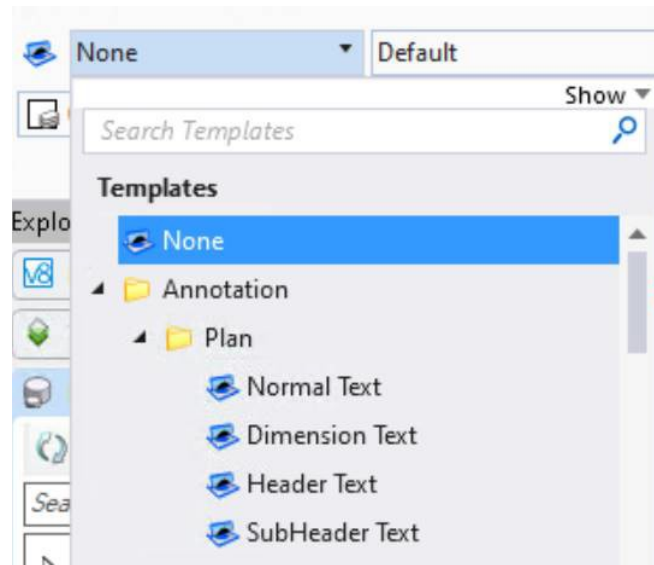
Center Line example of the symbology issue is shown below.



There are other characters such as the delta symbol Δ that will have to be updated as well.

Four Annotation Plan element templates are included in the workspace to easily provide the EngineeringVert text outside of the use of dimensions. These have been configured in

IowaDOT_Bridge_Features_Levels_Elem Temp-Imperial.dgnlib
IowaDOT_Bridge_Features_Elem Temp.dgnlib



The use of the Dimension Text element template is intended for text elements in tables so that the text fits appropriately. All dimensions and table text elements should use the Dimension Text element template resulting in the same text style and level being used.

The other templates are for use as the name of the element template suggests, placement of normal text, subheader text and header text. All text in notes should use the Normal Text element template with sentence case style.

Notes:

The use of the new TrueType Font EngineeringVert is applied to new releases of design standards. Additional standards series will be updated for the font and new Text and Dimension Styles as other modifications are required for those standards. A mix of fonts on the plan sheets with the standards having the MicroStation font is acceptable.