

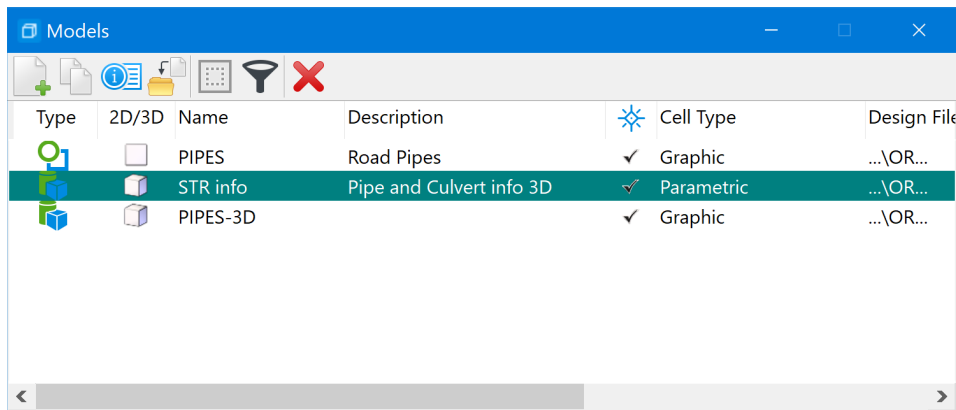
# Loading the ASCII Graphics Input File

These instructions were created on 3/23/2021. These instructions were created with:

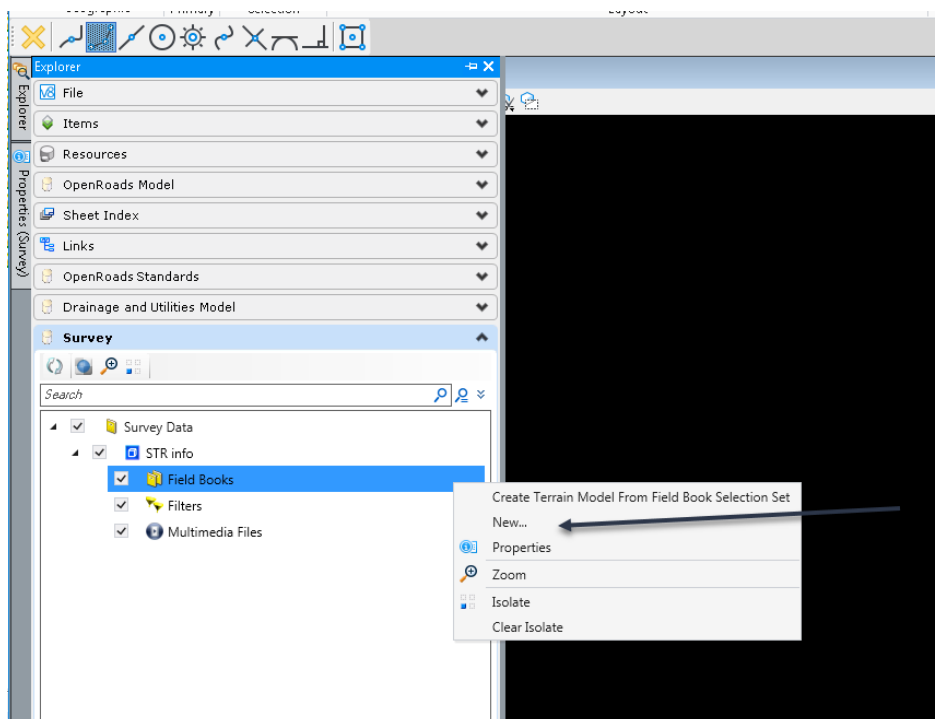


**OpenRoads Designer CONNECT Edition - 2020 Release 3 Update 9 - Version 10.09.00.91**

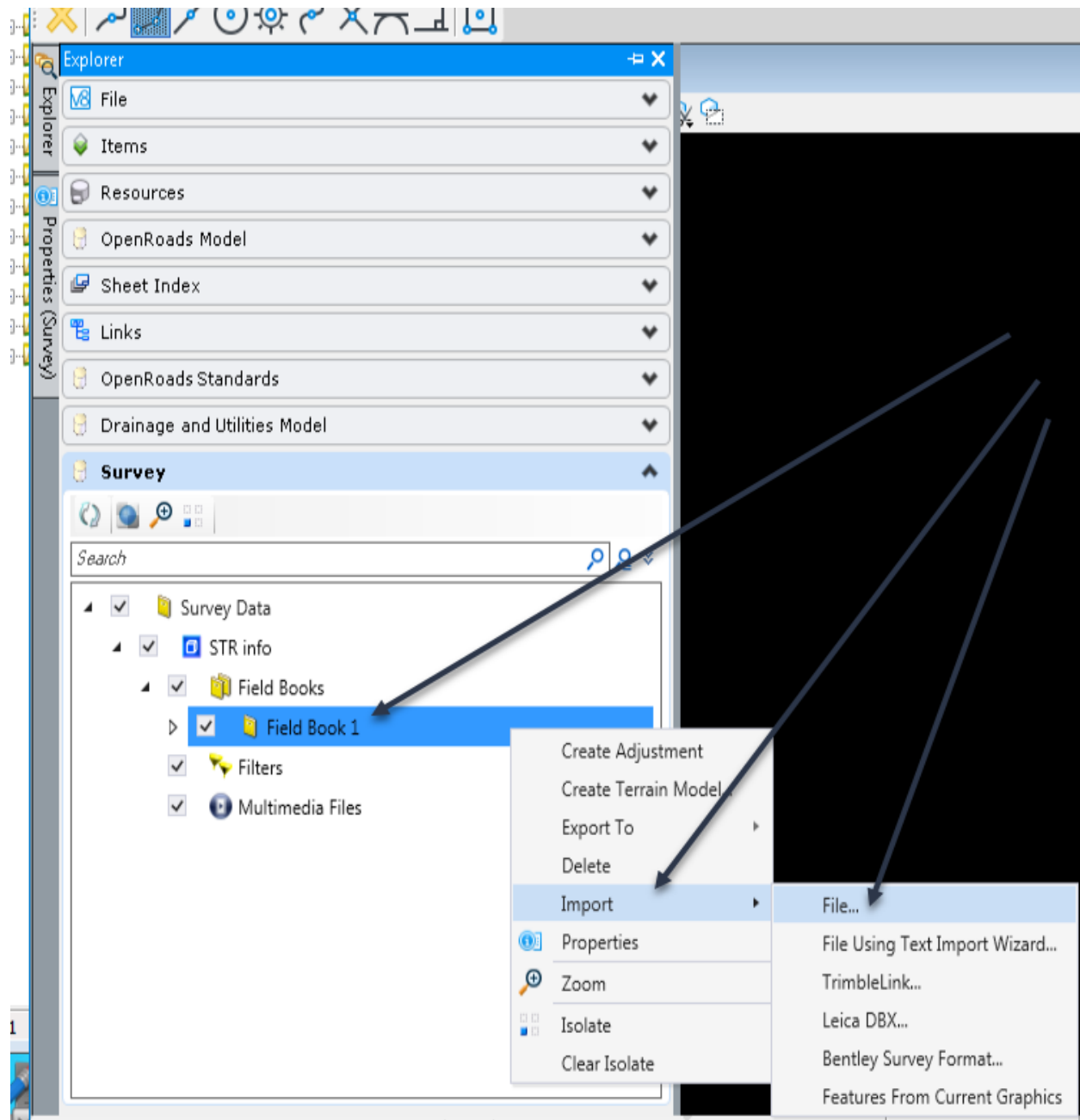
Once the ASCII graphics input file is done then the file is ready to load in the OpenRoads Designer file. With the file open, go to the Models dialog box and select the STR info to make it the active model.



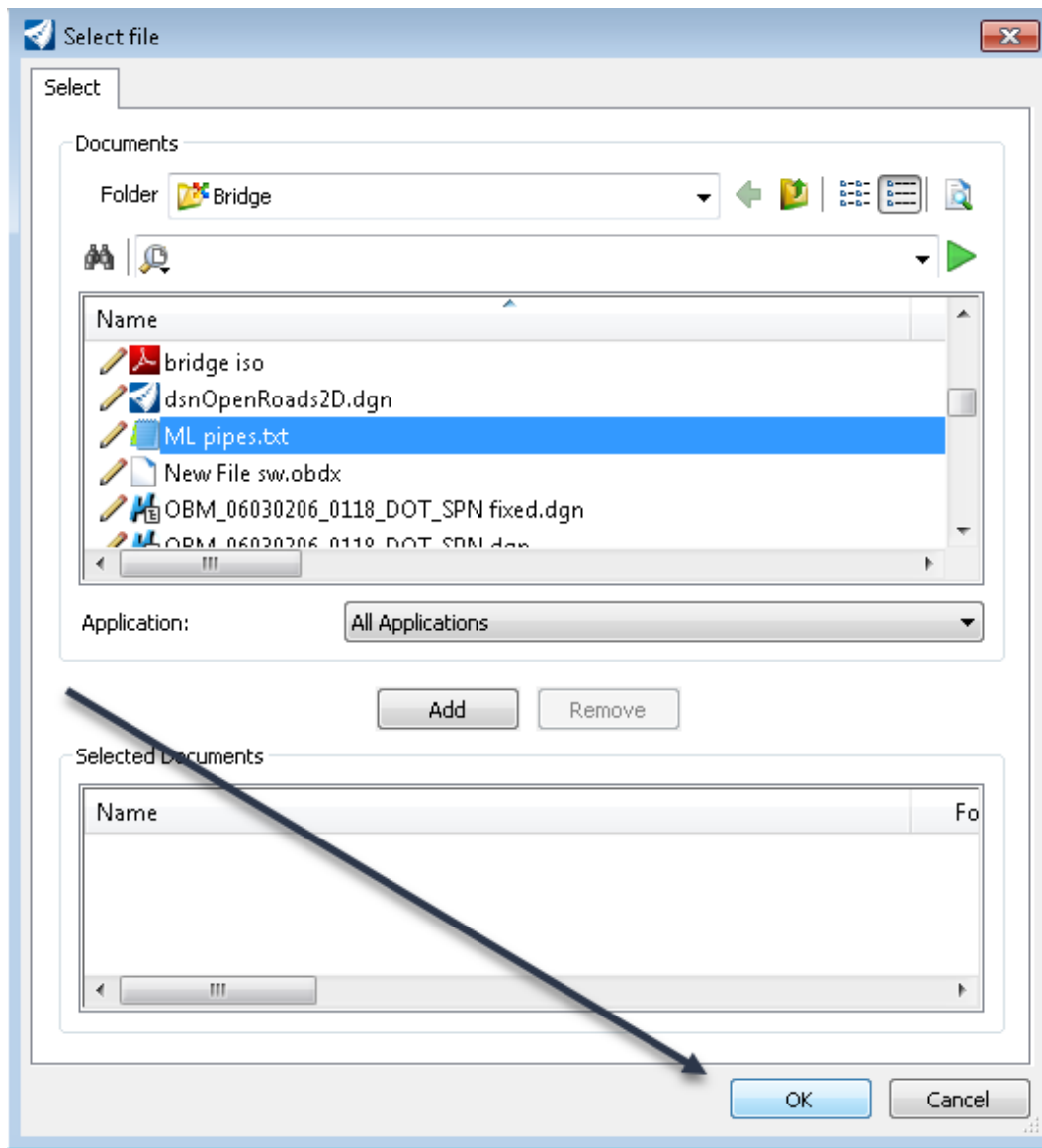
In Project Explorer under the Survey tab select Field Books under STR info, then right click and select New. The name of the Field Book is automatic using a sequential number starting with 1. This will make a new field book that will be used to load the ASCII graphics input file that contains the invert coordinates.



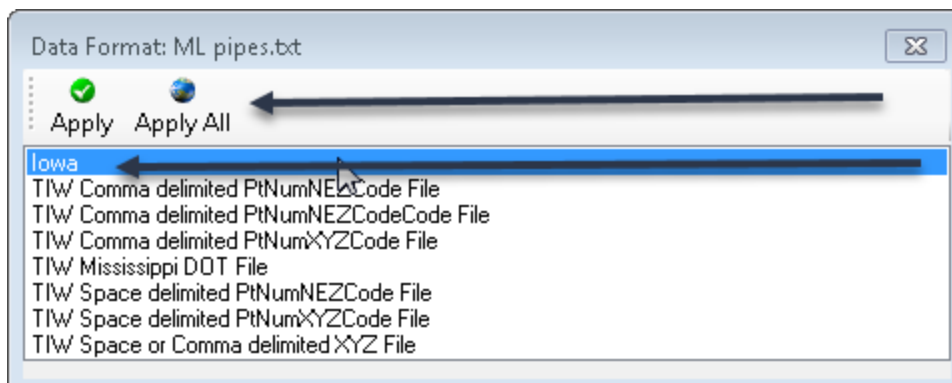
Next select the new field book, then right click and select import. Select the ASCII graphics input file that was created.



Then browse to where the Survey input file that contains the invert coordinates is stored. Click OK.



It will prompt for the data format. Select the Iowa format and then click Apply All.



This will map all the points and lines in the survey input file.



Once the points and lines from the ASCII graphics input file are loaded and the correct location is verified, then start creating the structures.