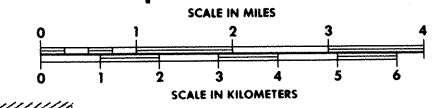


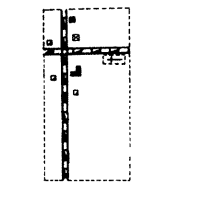
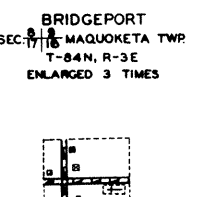
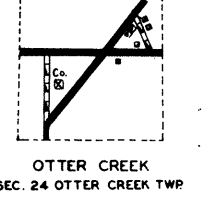
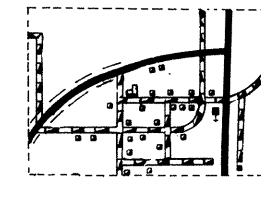
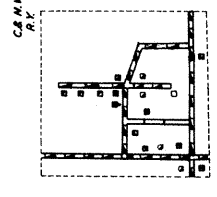
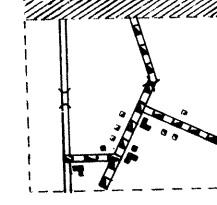
Highway and Transportation Map JACKSON COUNTY IOWA

Prepared By
Iowa Department of Transportation
Phone (515) 239-1289
In Cooperation With

United States Department of Transportation



1986



LEGEND

STATE LINE	UNIMPROVED ROAD (RURAL)
COUNTY LINE	GRAVEL ROAD
CIVIL TOWNSHIP	BITUMINOUS SURFACED ROAD
CORPORATION LINE	PAVED ROAD
SECTION LINE	UNITED STATES HIGHWAY
INTERMITTENT STREAM	STATE HIGHWAY SYSTEM
NARROW STREAM	COUNTY TRUNK SYSTEM
WIDE STREAM	FEDERAL AID HIGHWAY SYSTEM
DRAINAGE DITCH-MAIN	POINTS BETWEEN WHICH DISTANCES ARE MEASURED.
DRAINAGE DITCH-SMALL	HIGHWAY WITH PARTIAL CONTROL OF ACCESS
HIGHWAY BRIDGE LARGE	GREAT RIVER ROAD
RAILROAD SINGLE OPERATING COMPANY	SMALL PARK (COUNTY/STATE)
RAILROAD BELOW OVERHEAD	AIRPORT, LIMITED FACILITIES
RAILROAD OVER SUBWAY	LANDING STRIP
LEVEL	COMMERCIAL DOCK
CENTER OF CITIES	GAGING OR PUMPING STATION
CENTER OF COUNTY SEAT	PICNIC GROUND
RAILROAD GRADE CROSSING	
STATE OR FEDERAL PROPERTY (NAMED)	
DELIMITING AREA (GENERALIZED)	
MARSH OR SWAMP LAND	
ABANDONED RAILROAD (TRACKS RETAINED)	
FARM UNIT	
DWELLING OTHER THAN FARM	
ROWS OR GROUPS OF DWELLINGS	
STORE OR SMALL BUSINESS ESTABLISHMENT	
CHURCH OR OTHER RELIGIOUS INSTITUTION	
SCHOOL OR OTHER EDUCATIONAL INSTITUTION	
SEASONAL DWELLINGS	
GRAVEL PIT	
QUARRY	
CAMP OR LODGE	
FACTORY	
TRIANGULATION STATION	
CEMETERY	
PLAY GROUND OR BALL FIELD	
OPERATED SHIP AND BARGE LINE ON NATURAL STREAM	
DAM WITH LOCK	
JETTIES	
TRUSS STEEL	
COUNTY HOME	
AUTO JUMP	
LAND FILL	
BOOSTER STATION	

JONES CO. JACKSON CO.

GARRY OWEN
SEC. 3 BUTLER TWP.
T-86N, R-1E
ENLARGED 5 TIMES

DUGGAN
SEC. 26 BUTLER TWP.
T-86N, R-1E
ENLARGED 35 TIMES

CANTON
SEC. 15 BRANDON TWP.
SEC. 23 CLAY TWP.
T-85N, R-1E/1W
ENLARGED 5 TIMES

