



INRCOG
Iowa Northland Regional
Council of Governments

Iowa Northland Regional Transportation Authority & Black Hawk County Metropolitan Area Transportation Policy Board

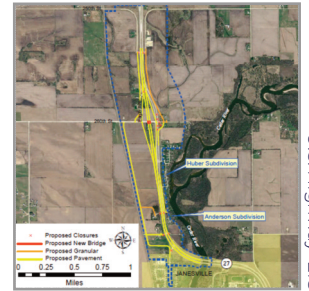
presentation to the

Iowa Transportation Commission - April 14, 2020



U.S. Highway 218 - Cedar Falls to Waverly

- ◆ Thank you for programming funds in FY'24 for construction of an interchange at 260th Street



U.S. Highway 218

7th Street Bridge - Janesville

- ◆ 7th Street Bridge closure would result in a 5.5-mile detour
- ◆ \$5.7M bridge replacement cost estimate



7th Street Bridge - Janesville

IA Highway 58 and Greenhill Rd.

- ◆ #43 on the Iowa DOT's Top 200 Safety Improvement Candidate Locations
- ◆ Considerable growth potential in the area
- ◆ Single Point Interchange - Planning level cost estimate of \$36M
- ◆ Cedar Falls is willing to partner with Iowa DOT financially

IA Highway 58 and U.S. Highway 20

- ◆ Securing funds for system improvements for U.S. Highway 20 /Ridgeway Ave. is a goal of Cedar Falls and the MPO
- ◆ Interim improvements are needed now to support current and future growth
 - * Final design underway
 - * MPO has programmed \$500K in FY'22 for improvements
- ◆ Ridgeway Ave: #56 on the Iowa DOT's Top 200 Safety Improvement Candidate Locations



IA Hwy 58 & Viking Rd.

U.S. Highway 63 Corridor

- ◆ Redefined corridor, safer, aesthetically pleasing, and accommodating for all modes
- ◆ Millions in development has occurred along the corridor
- ◆ \$44M in roadway improvements
- ◆ Thank you for programming over \$35M towards this corridor



U.S. Hwy 63 Railroad Overpass

RISE - Waterloo, Lost Island Theme Park

- ◆ Local Development project
- ◆ Estimated \$32M economic impact over 100-day summer
- ◆ 4,000 - 8,000 visitors per day
- ◆ Thank you for awarding RISE funds for this important project



INRCOG

Iowa Northland Regional
Council of Governments

Iowa Northland Regional Transportation Authority & Black Hawk County Metropolitan Area Transportation Policy Board

presentation to the

Iowa Transportation Commission - April 14, 2020



Waterloo - La Porte Rd/Hess Rd

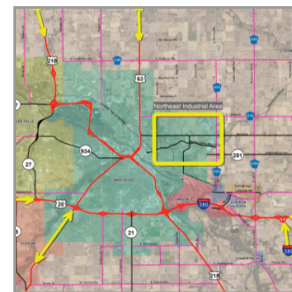
- ◆ North/south commercial corridor
- ◆ Serves eastern Waterloo; the Lost Island Waterpark, Isle Casino Hotel, KOA Campground, and future Lost Island Theme Park
- ◆ Distressed commercial corridor
- ◆ No bicycle or pedestrian accommodations
- ◆ \$5.5M in STBG programmed through the MPO



La Porte Rd/Hess Rd

Northeast Industrial Access

- ◆ Planning Study completed in 2019
- ◆ Several feasible alternatives identified to address safety, capacity, and traffic access
- ◆ Up to \$60M in feasible alternatives identified
- ◆ Next step: NEPA phase
- ◆ \$400k in STBG requested through MPO for NEPA phase



Northeast Industrial Access

Air Support

- ◆ Commit to a long-term infrastructure program of \$16.5M per year for 10 years
- ◆ Sales and other aviation specific taxes and fee revenues from Aircraft & Aviation Services deposited only in the State Aviation Fund
- ◆ All federal taxes via sale of aviation fuels deposited directly into the Aviation Trust Fund
- ◆ Increase to the Passenger Facility Charge (currently at \$4.50)
- ◆ Expand the Runway Markings & Pavement Maintenance Programs to include CSAs that enplane under 100K passengers/yr.
- ◆ Partner with Iowa's airports to provide a 5% match share to FAA-funded capital development projects

Planning & Programming

- ◆ Thank you for your strong support of the planning and programming process
- ◆ MPO STBG: \$67.9M; 58 projects, 38 miles of roadway
- ◆ RTA STBG: \$54.4M; 119 projects, 454 miles of roadway
- ◆ Over \$20M partnered on Iowa DOT projects

Other Transportation Planning Activities

- ◆ MET Transit fixed-route restructuring
- ◆ Black Hawk County Water Trails Master Plan
- ◆ Safe Routes to School Outreach Coordinator
- ◆ Trails Wayfinding Signage



Transportation Planning