

US52 / SOUTHWEST ARTERIAL PROJECT

■ ■ **US20 Interchange**



THE CITY OF
DUBUQUE
Masterpiece on the Mississippi

**OPENED TO TRAFFIC
AUGUST 17, 2020**



THANK YOU

PASSENGER RAIL FEASIBILITY STUDY

■ ■ Dubuque to Rockford



© 2004 Blackwell Publishing Ltd, *Journal of Internal Medicine* 255: 105–112



PORT STUDY

■ ■ Gavilon Port Improvements



Mainline Turnout

Relocated
Tracks 1-4

Mainline Rail

Rail Improvement

Rail Improvement

Raise Barge Loadout
Tower for DDGS

Existing Track

Existing Berth

DDGS Rail
Unload

Fertilizer Loadout

Storage Shed
Improvement

New Rail Spur

CHAVENELLE BIKE PEDESTRIAN TRAIL



THE CITY OF
DUBUQUE
Masterpiece on the Mississippi

PHASE 1 - COMPLETED



- Funded with SAFETEA-LU Earmark
- Transportation Alternatives Program (MPO TAP)

PHASE 1 - FUNDING

SAFETEA-LU	\$ 658,400
LOCAL MATCH	\$ 164,600
TOTAL	\$ 823,000

EXISTING HIKE/BIKE TRAIL
TO PENNSYLVANIA AVE

PHASE 2 - FUNDING

SAFETEA-LU	\$ 247,700
TAP FUNDS	\$ 242,900
LOCAL MATCH	\$ 122,600
TOTAL	\$ 613,200

PHASE 2 - SUMMER 21



EAST - WEST CORRIDOR CAPACITY IMPROVEMENTS

■ ■ Accomplishments

- August 2019 City received FHWA final closure acceptance for defederalization of funds
- SWAP Funding Agreement with Iowa DOT in December 2019



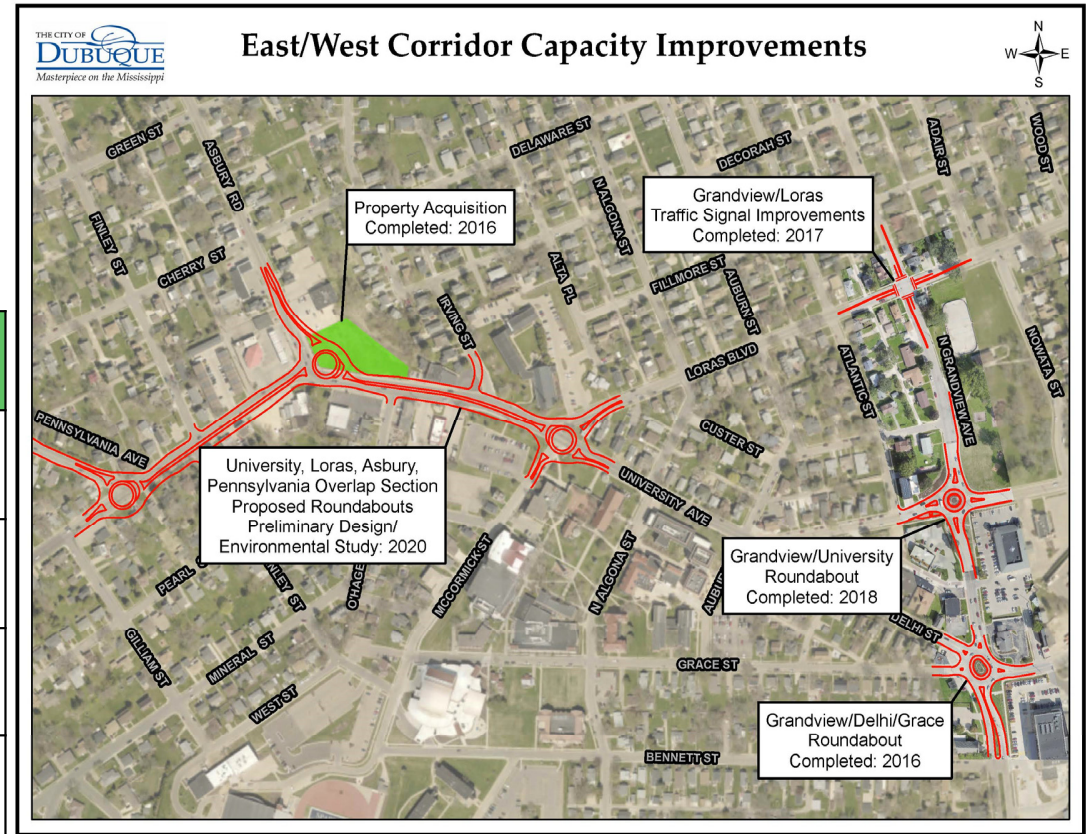
- Preliminary Engineering & Environmental Clearance Consultant Selection is currently underway

EAST - WEST CORRIDOR CAPACITY IMPROVEMENTS

■ ■ Accomplishments

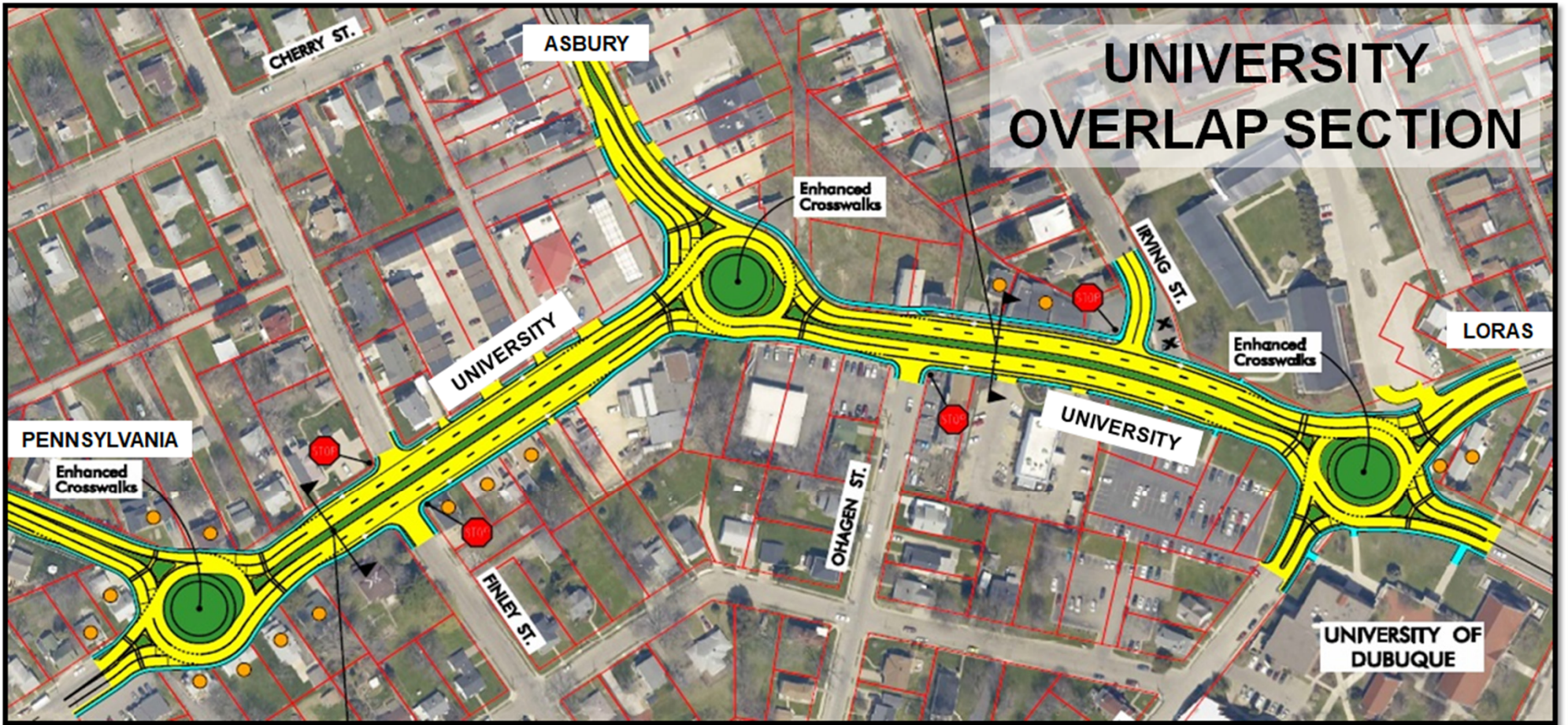
*In an effort to advance this Council **Top Priority**, the City has already completed several capacity and safety improvements:*

Project	Year	Cost
Property Acquisition	2016	\$ 853,305
Grandview - Delhi Roundabout	2016	\$ 827,000
Loras - Grandview Traffic Signals	2017	\$ 370,300
University - Grandview Roundabout	2018	\$ 1,200,000
Total Improvements To-Date		\$ 3,250,300



EAST - WEST CORRIDOR CAPACITY IMPROVEMENTS

■ ■ Project Development



EAST - WEST CORRIDOR CAPACITY IMPROVEMENTS

■ ■ Development Schedule

2022

2023

2024

2025

Preliminary Design
Environmental Phase

\$1.0 Million

Final Design

\$1.0 Million

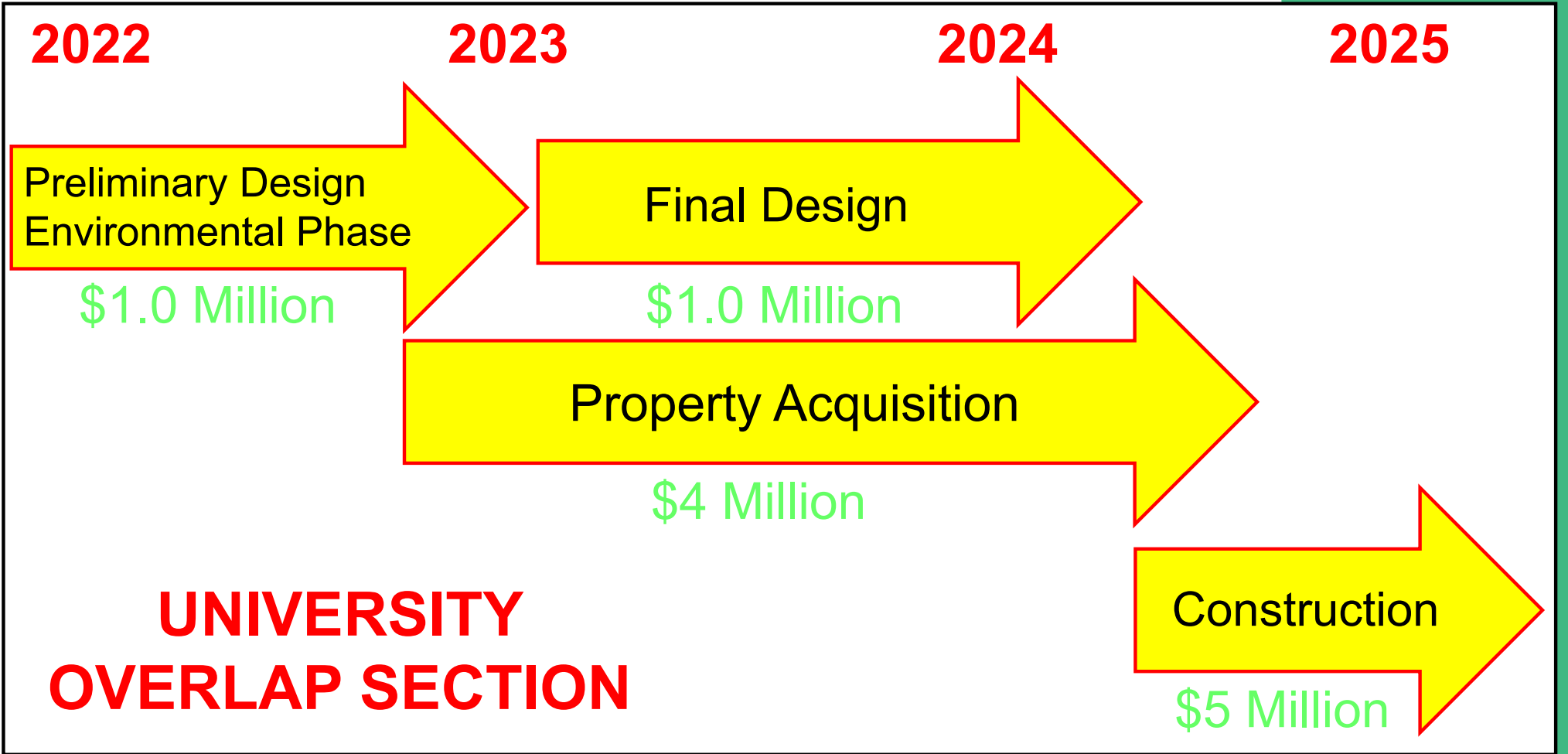
Property Acquisition

\$4 Million

**UNIVERSITY
OVERLAP SECTION**

Construction

\$5 Million



STREETS PROJECT

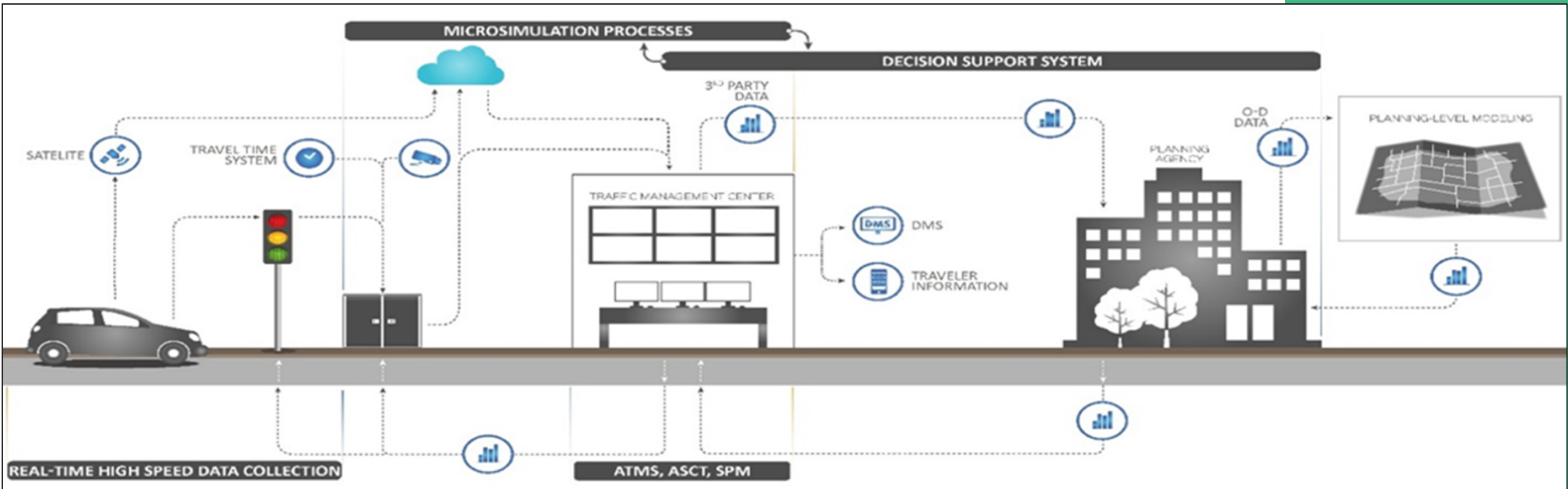
■ ■ Advanced ITS Corridor Development

- Smart Traffic Routing with Efficient and Effective Traffic Signals (STREETS)
- Goal is to develop a smart, next-generation, traffic management and control system

THE CITY OF
DUBUQUE
Masterpiece on the Mississippi

**IOWA
DOT**
SMARTER | SIMPLER | CUSTOMER DRIVEN

FHWA

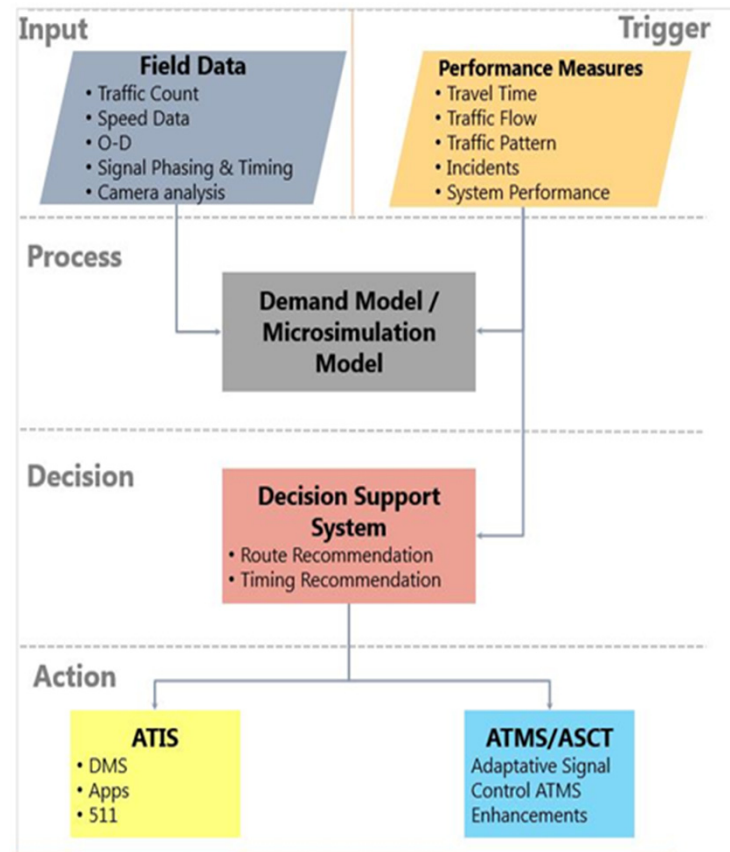


STREETS PROJECT

■ ■ Advanced ITS Corridor Development

• STREETS

System will dynamically react to congestion detected or predicted by the Microsimulation model, and proactively change signal timing based on predicted traffic flow data while disseminating congestion and alternate route information for motorists.



STREETS PROJECT

■ ■ Funding Partnership

BUDGET IMPACT

Estimated Cost

Hardware and software components	\$ 2,693,000
Plan development/engineering/contingency	\$ 593,250
City/DMATS/consultant review and deployment	\$ 380,000
Total Estimated Cost	\$ 3,666,250

Current Budget

FHWA AID GRANT	\$ 998,000
ICAAP SWAP FUNDS	\$ 818,250
STATE FUNDS	\$ 300,000
DMATS STBG SWAP FUNDS	\$ 900,000
TSIP	\$ 100,000
CITY FUNDS	\$ 550,000
Total Budget	\$ 3,666,250



US52 / SOUTHWEST ARTERIAL

■ ■ ITS Corridor Development

- Approved Partnership Funding Agreement with Iowa DOT

Iowa DOT / State of Iowa	\$ 1,500,000
City Funding FY21 / FY22	\$ 100,000
Total Project Cost	\$ 1,600,000



- Fiber Optic Network
- Cameras
- Sensors
- Other Technology



THE CITY OF
DUBUQUE
Masterpiece on the Mississippi

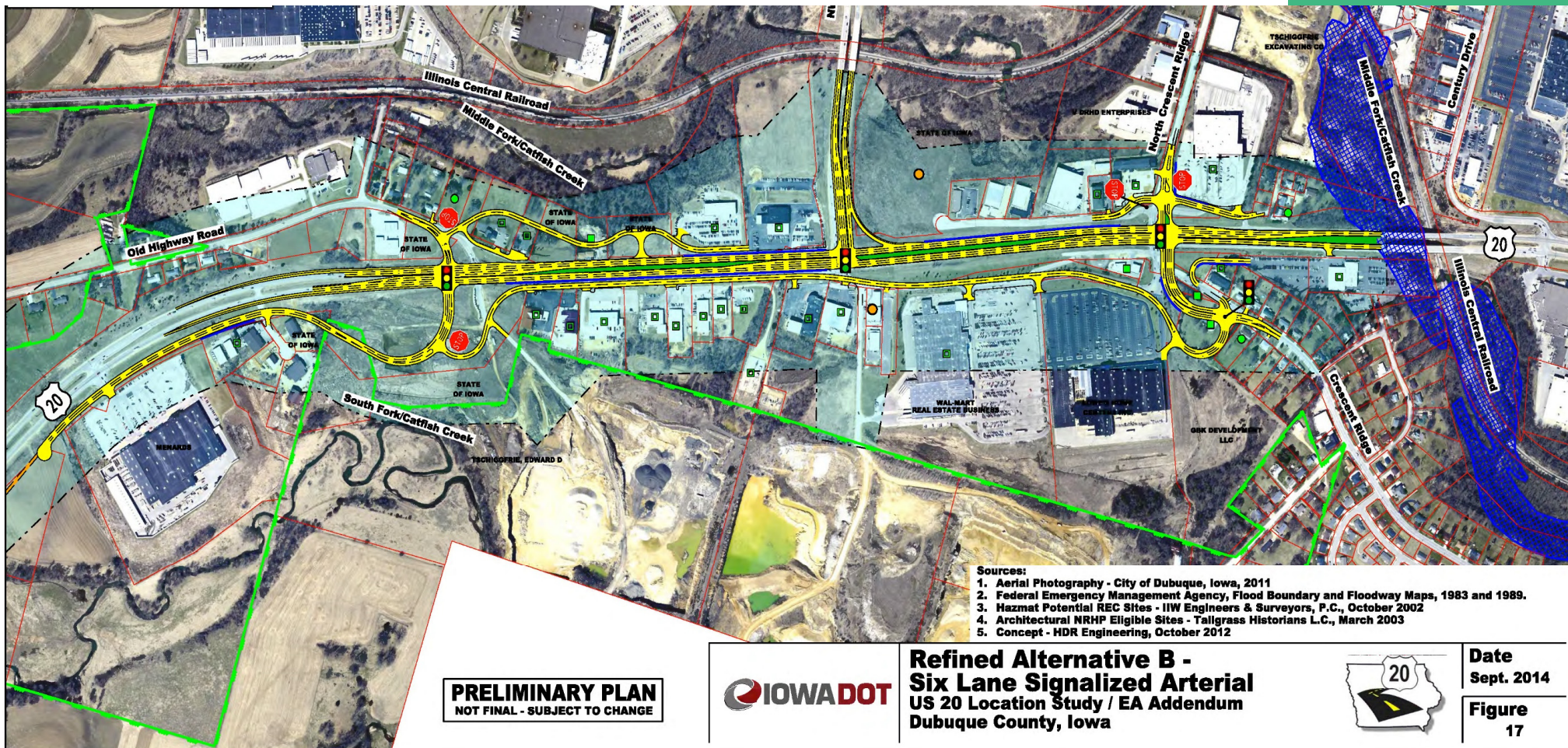
**IOWA
DOT**
SMARTER | SIMPLER | CUSTOMER DRIVEN

US20 CORRIDOR CAPACITY IMPROVEMENTS

Northwest Arterial Intersection



THE CITY OF
DUBUQUE
Masterpiece on the Mississippi

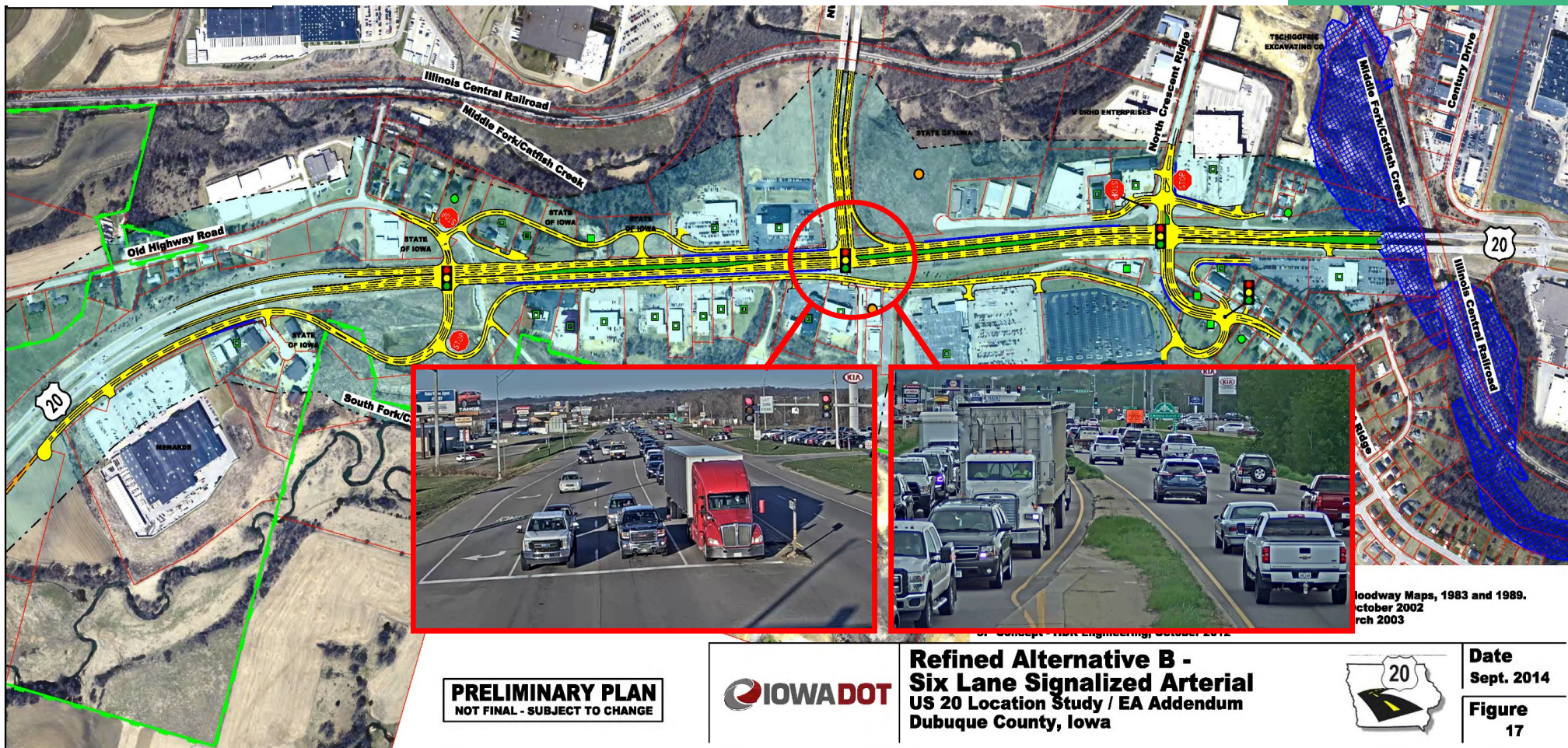


US20 CORRIDOR CAPACITY IMPROVEMENTS

Northwest Arterial Intersection



THE CITY OF
DUBUQUE
Masterpiece on the Mississippi



CENTRAL AVE - WHITE ST RESURFACING

■ ■ Formerly US52 - State of Good Repair



THE CITY OF
DUBUQUE
Masterpiece on the Mississippi

- Phase 1 - Central Ave (21st to 32nd) Pavement Rehab Project (2012)
- Phase 2 - White Street (11th to 21st) Pavement Rehab Project (2014)
- Phase 3 - White (9th to 11th), 11th (White to Elm) Pavement Rehab (2019)
- Phase 4 - Central Ave (9th to 21st) Pavement Rehab Project (2020)

INVESTMENT

Iowa DOT:
\$1,968,000

City:
\$3,148,000



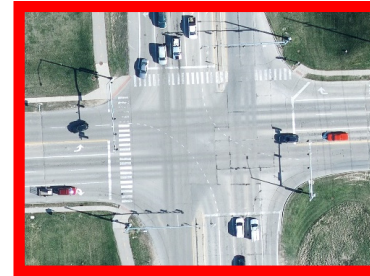
NW ARTERIAL - REHABILITATION & RECONSTRUCTION

COMING
SUMMER 2022

■ ■ Project Development: TOJ - State of Good Repair

- Component of Dbq County BUILD Grant Safety Improvements to John Deere Rd
- \$5,672,000 Iowa DOT Transfer of Jurisdiction State of Good Repair Payment to City
- Major Rehabilitation of NW Arterial between US20 to JFK
- Asbury & Penn Intersection Reconstruct

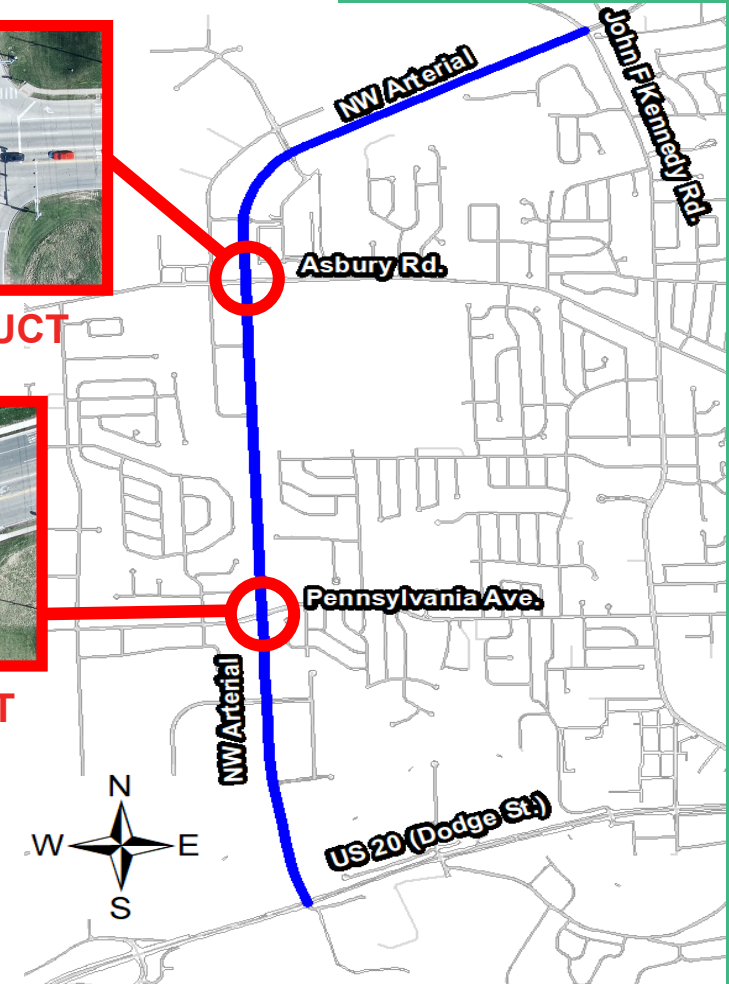
PROJECT FUNDING	
DOT State of Good Repair Payment	\$ 5,672,000
DMATS STBG SWAP Funds	\$ 3,000,000
PROJECT BUDGET	\$ 8,672,000



RECONSTRUCT



RECONSTRUCT



A green L-shaped graphic consisting of a vertical bar and a horizontal bar meeting at a right angle, positioned to the right of the 'THANK YOU' text.

THANK YOU

www.cityofdubuque.org/Engineering