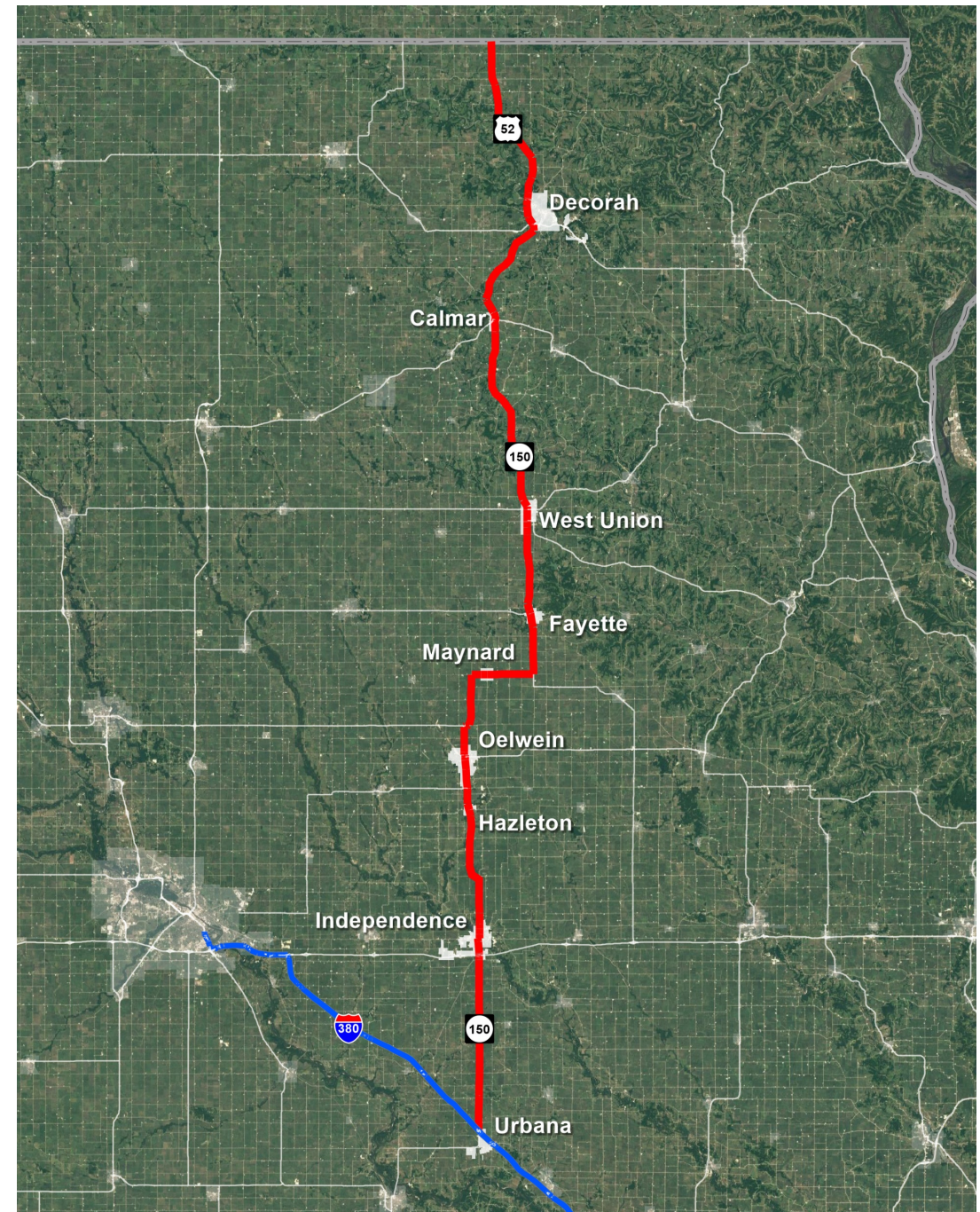




Highway 150  
Coalition

# Our Mission

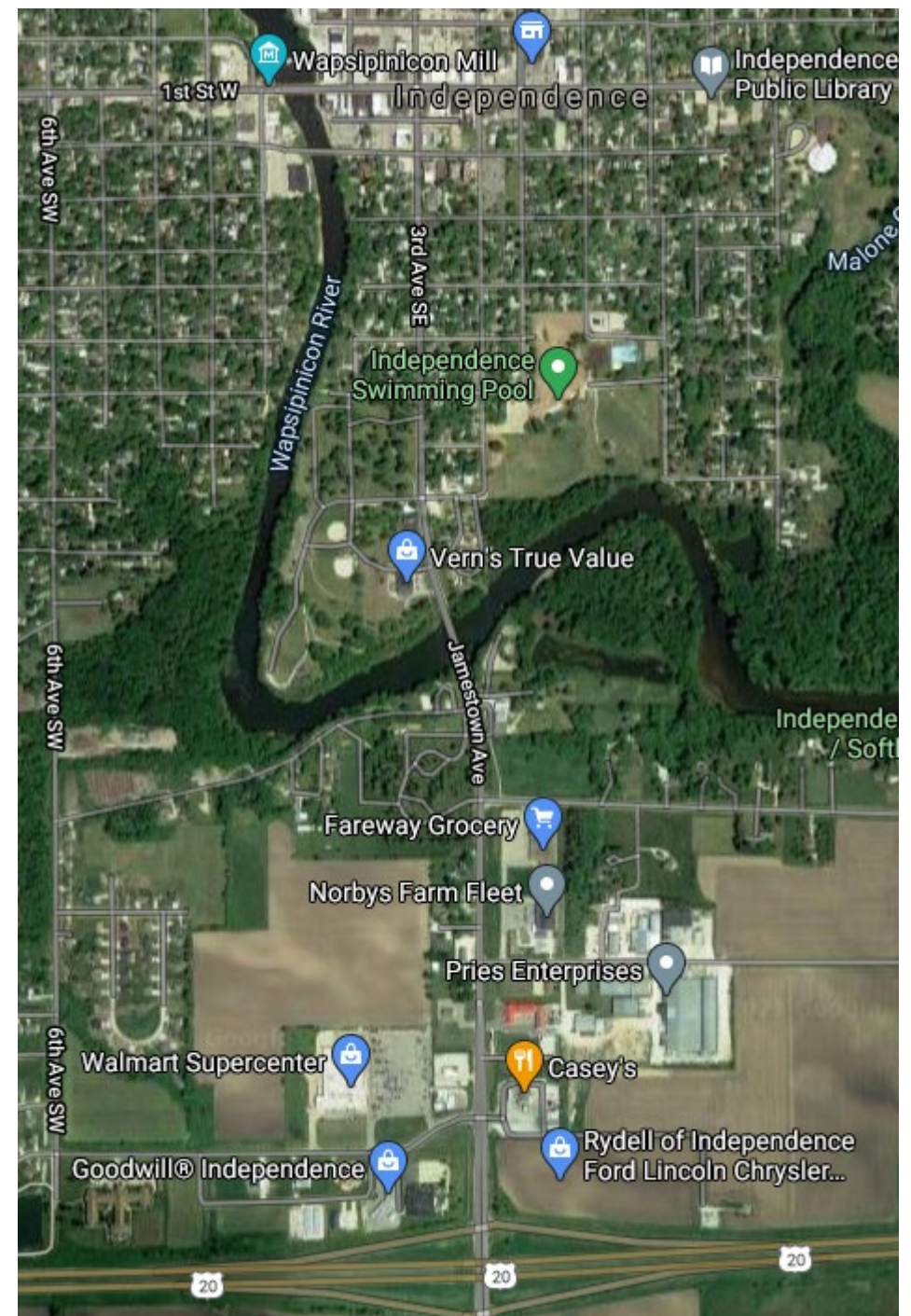
The Highway 150 Coalition is determined to bring improvements to the transportation issues along Highway 150, specifically within the City of Independence, a critical point along Highway 150.





# Current Studies on 150

- Traffic Engineering Assistance Program (TEAP)
  - Occurring in Independence in 2021





# IA 150 Growth

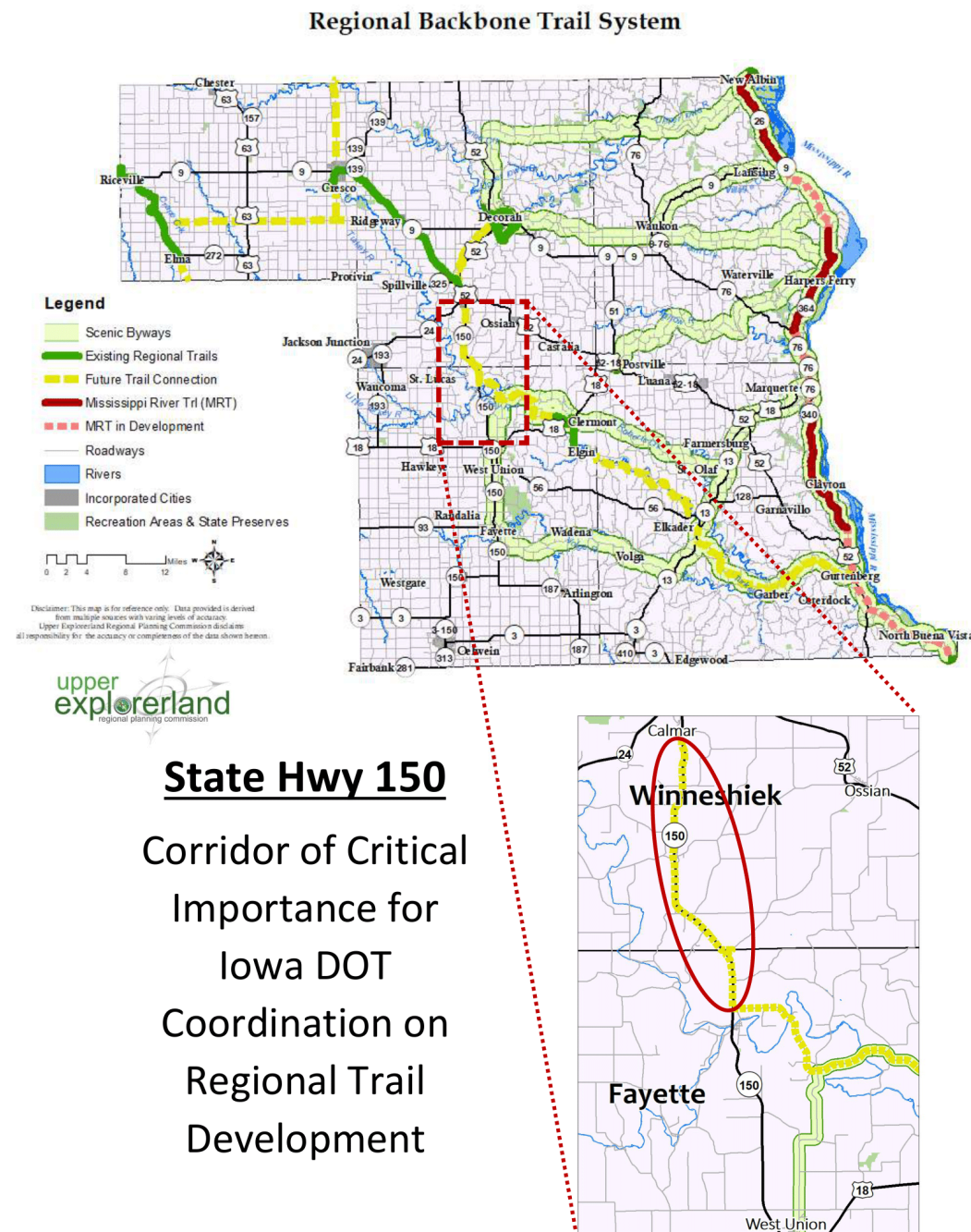
---

- Expansion of Pries Manufacturing
- Extension of Enterprise Dr.
- New Dollar Fresh coming to 150
- Scooters Coffee Shop Expansion



# Bike Accommodations on 150

- Key connector for Northeast Iowa's regional "Backbone Trail" system
- Planned and are programmed for FY 2021
- In 2019-2020, regional stakeholders worked collaboratively with Iowa DOT to include 6-ft. shoulders (rather than 4-ft.) as part of these projects
- This change will result in 4.5 feet of paved shoulder width outside of the rumble strips and will help improve connectivity for bicyclists and pedestrians on the corridor



# Oelwein Signals on 150

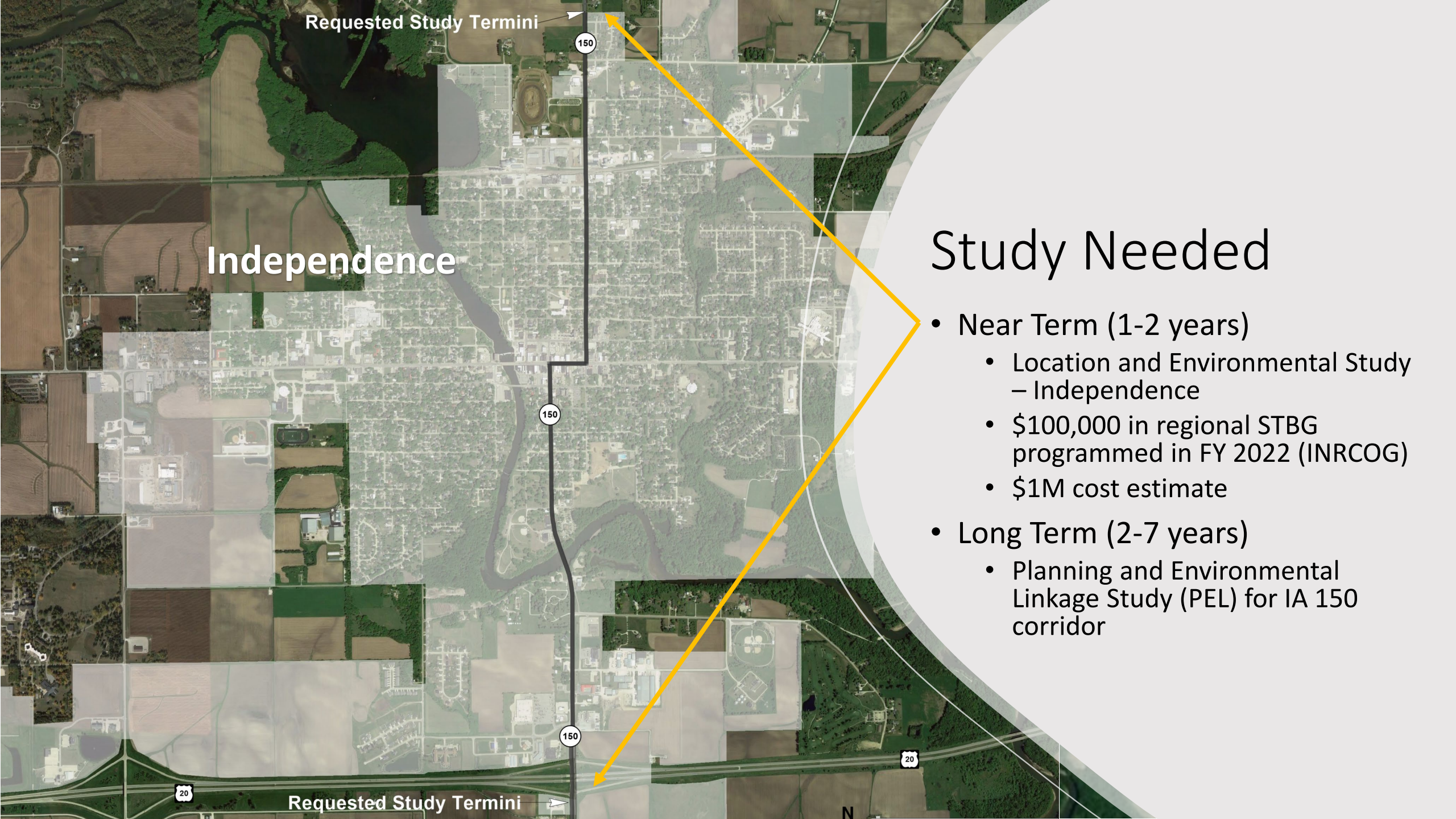


# Freight Efficiency

IA 150 Corridor identified as a **Freight Bottleneck** in the State Transportation Plan

Route	Counties	Corridor	Miles	Capacity	Freight (out of 94)	Condition	Bridge (out of 216)
IA 146	Mahaska, Poweshiek	US 63 to I-80	18.6		91		
	Poweshiek, Tama, Marshall	I-80 to US 30	24.5				
IA 148	Taylor, Adams	MO border to US 34	30.0		Corridor targeted for stewardship		
	Adams, Cass	US 34 to I-80	36.9				96
IA 149	Wapello	US 34 to US 63	5.9		71		216
	Wapello, Keokuk	US 63 to IA 92	27.3				32
	Keokuk, Iowa	IA 92 to I-80	27.7		Corridor targeted for stewardship		
	Benton	US 218 to I-380	13.0				
IA 150	Benton, Buchanan	I-380 to US 20	14.0				
	Buchanan, Fayette	US 20 to IA 3	16.4		41		
	Fayette	IA 3 to US 18	22.6		Corridor targeted for stewardship		
	Fayette, Winneshiek	US 18 to US 52	16.2		Corridor targeted for stewardship		





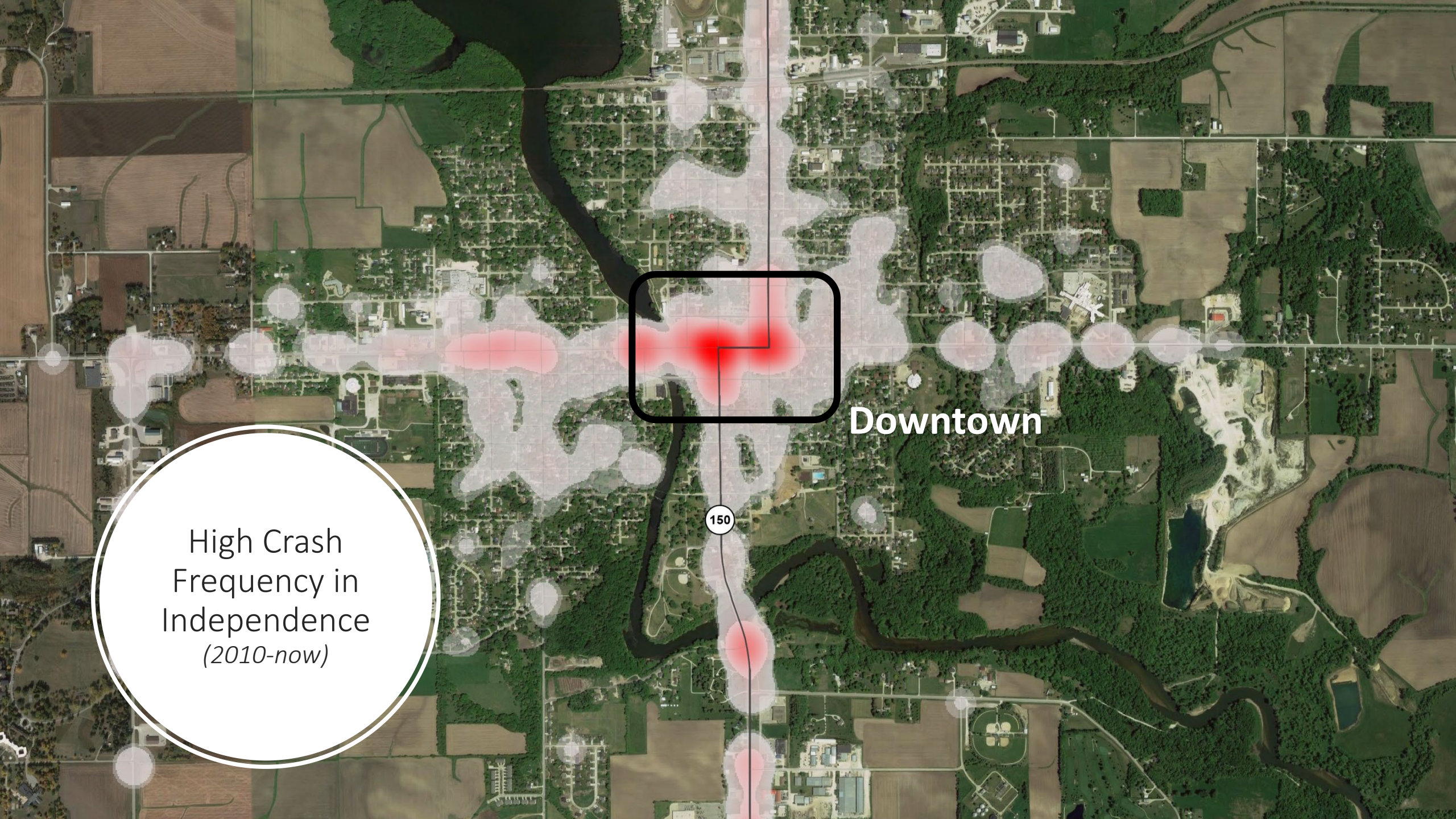
Requested Study Termini

Independence

## Study Needed

- Near Term (1-2 years)
  - Location and Environmental Study – Independence
  - \$100,000 in regional STBG programmed in FY 2022 (INRCOG)
  - \$1M cost estimate
- Long Term (2-7 years)
  - Planning and Environmental Linkage Study (PEL) for IA 150 corridor





Downtown

High Crash  
Frequency in  
Independence  
*(2010-now)*



# Focus on Super Two

- 150 is an excellent candidate for a Super Two
- Super-2 design elements limited access, geometric improvements, left- and right-turn lanes, acceleration lanes, and climbing/passing lanes
- Create the right improvements for 150





# Committed

- \$100,000 in federal Surface Transportation Block Grant (STBG) funds is programmed for a Planning Study of IA Hwy 150 in FY 2022 (October 1, 2021).



**INRCOG**

Iowa Northland Regional  
Council of Governments



# Highway 150 Coalition Members



**INRCOG**  
Iowa Northland Regional  
Council of Governments



The City of  
Fayette, Iowa





# Thank you

- The Highway 150 Coalition respectively requests that the Iowa DOT conduct a PEL for the 150 to improve safety and efficiency issues

