

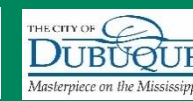
US 20 / SWISS VALLEY INTERCHANGE

IADOT COMMISSION PRESENTATION

By

Dubuque Metropolitan
Area Transportation
Study (DMATS)

06/14/2022



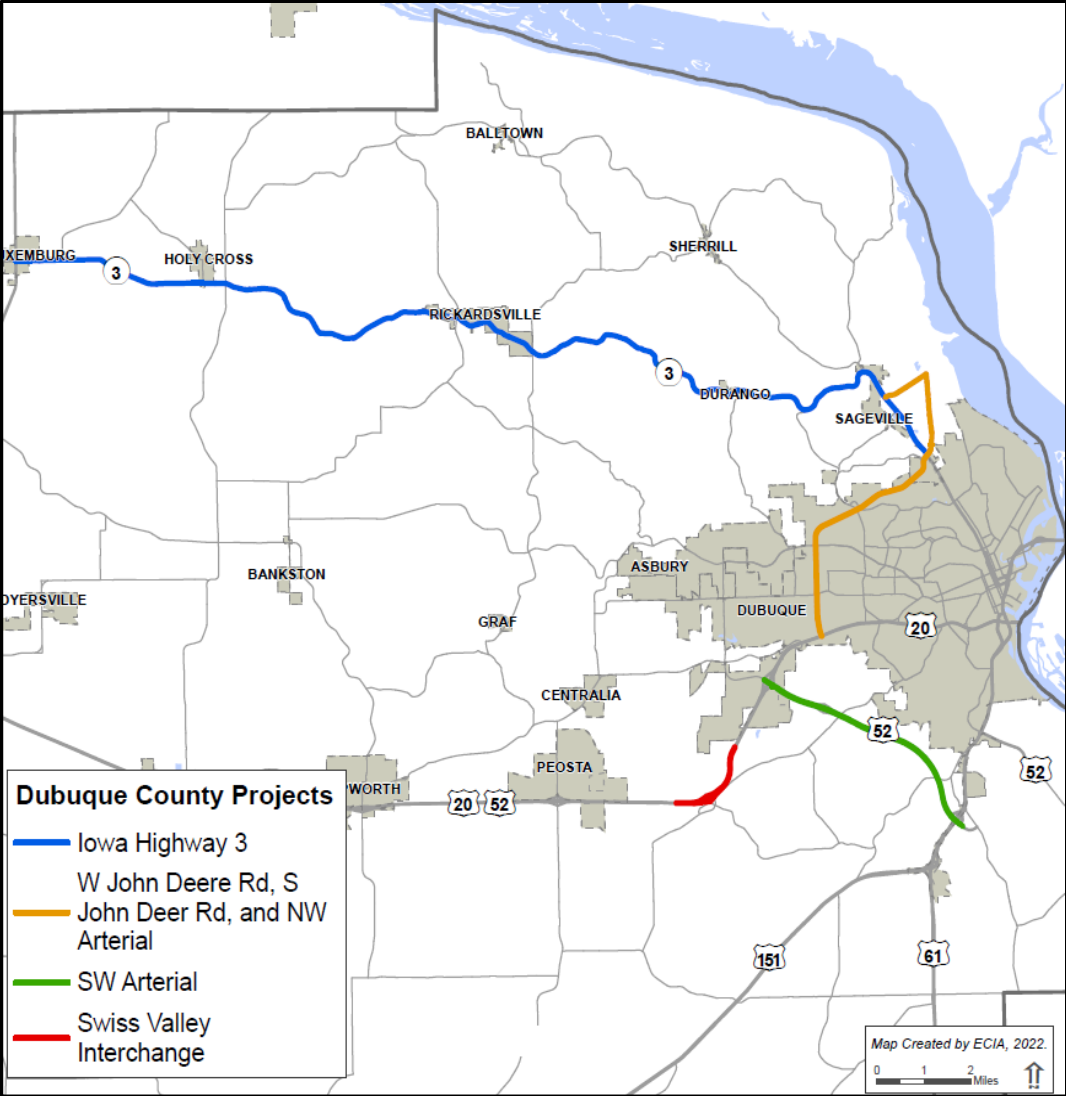
THIS PRESENTATION WILL COVER:

- Partnerships
- US 20 / NW Arterial Improvements
- Impact of Merger of CP & KCS on DMATS

PARTNERHSIPS



THANK YOU



US 52 / SW ARTERIAL



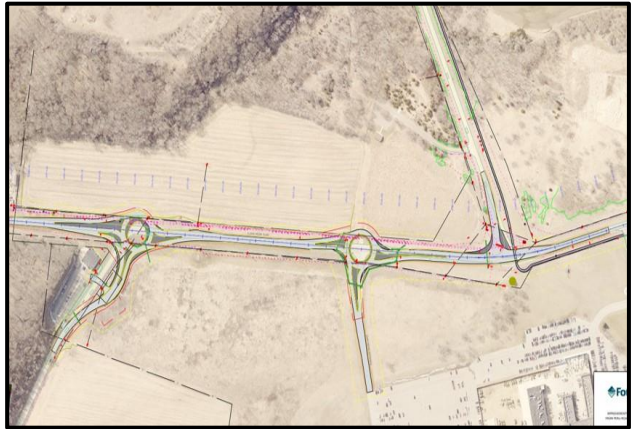
SWISS VALLEY



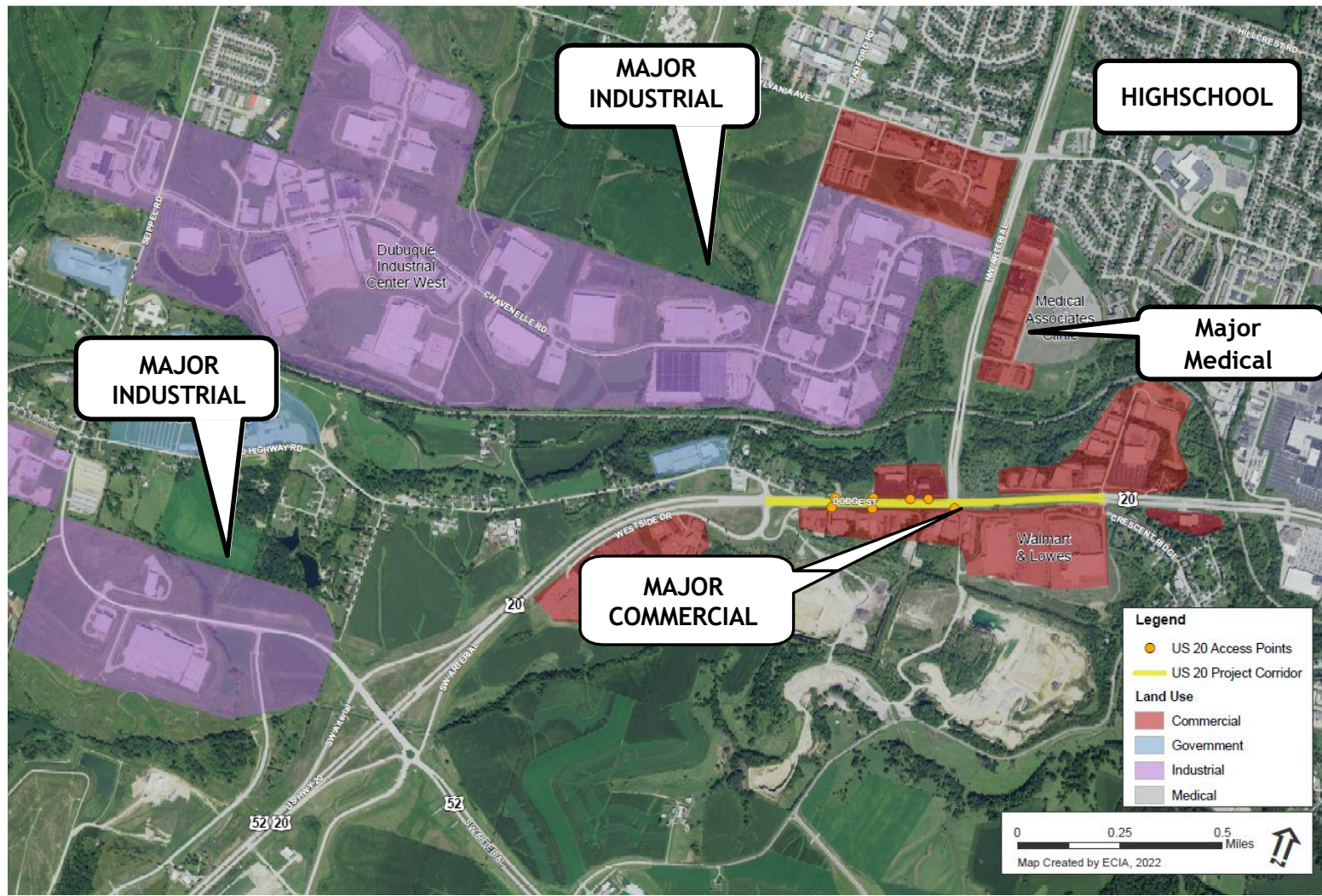
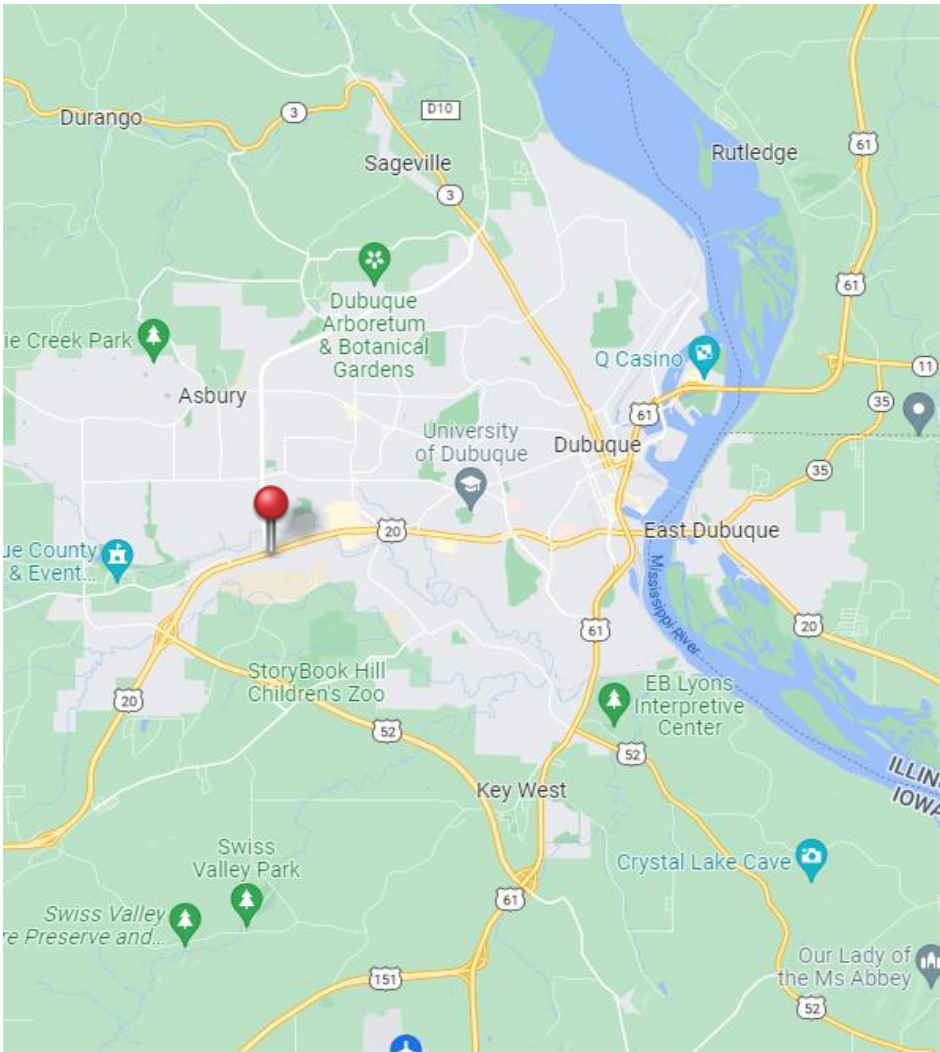
IA 3



JOHN DEERE

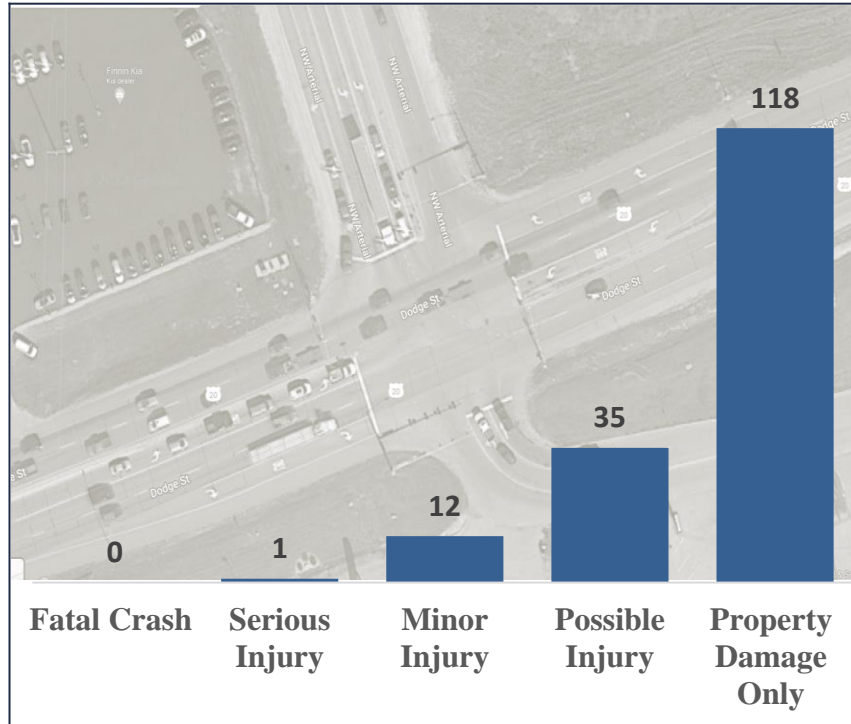


US 20 / NW ARTERIAL INTERSECTION

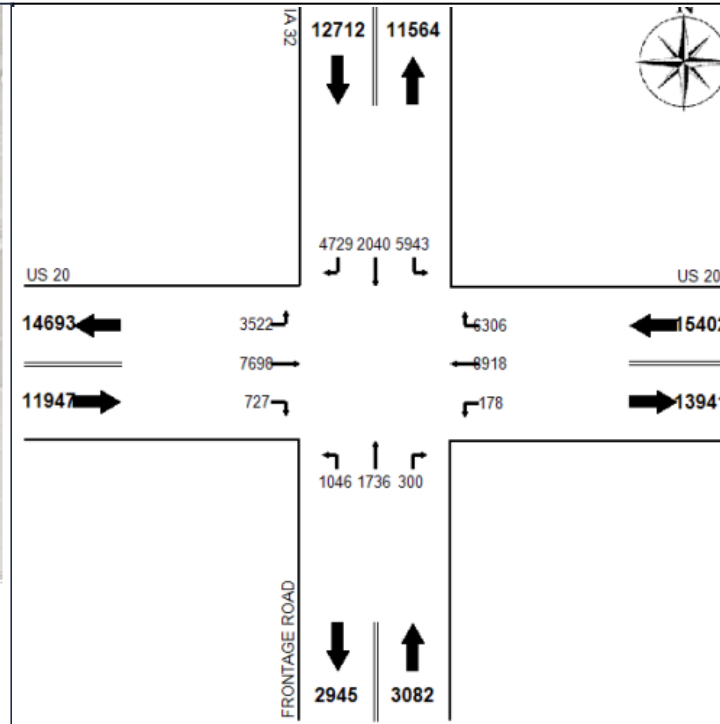


EXISTING CONDITION

Crash History



Congestion



Multiple Access Points

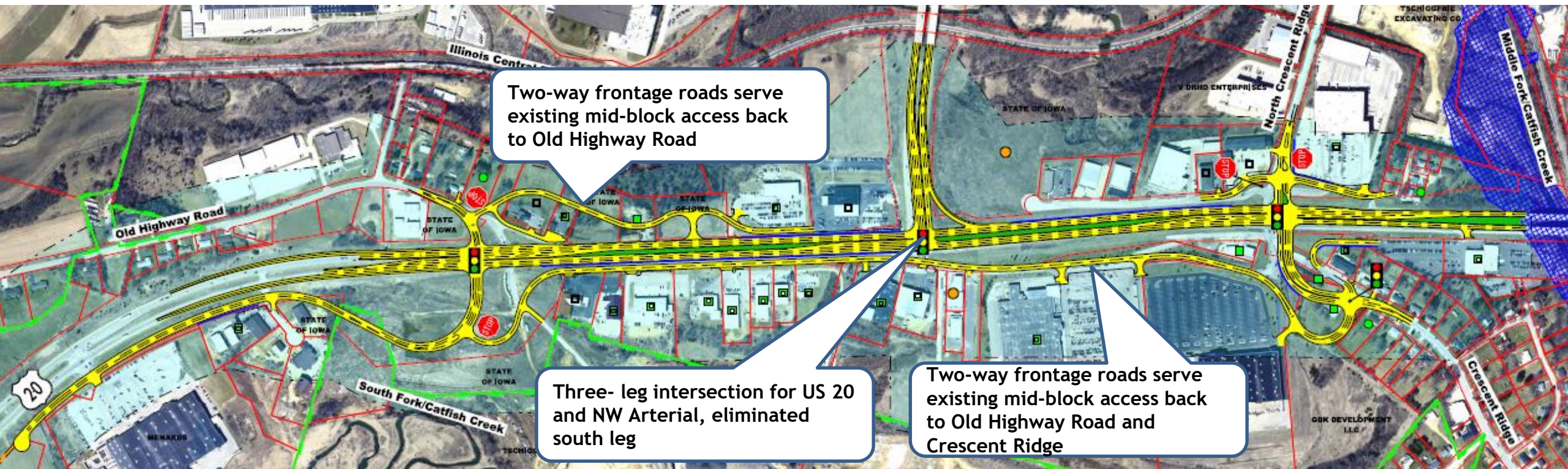


- Crashes are primarily related to:
 - Lack of capacity at this intersection / congestion
 - Poor access management near the intersection

PROJECT TIMELINE

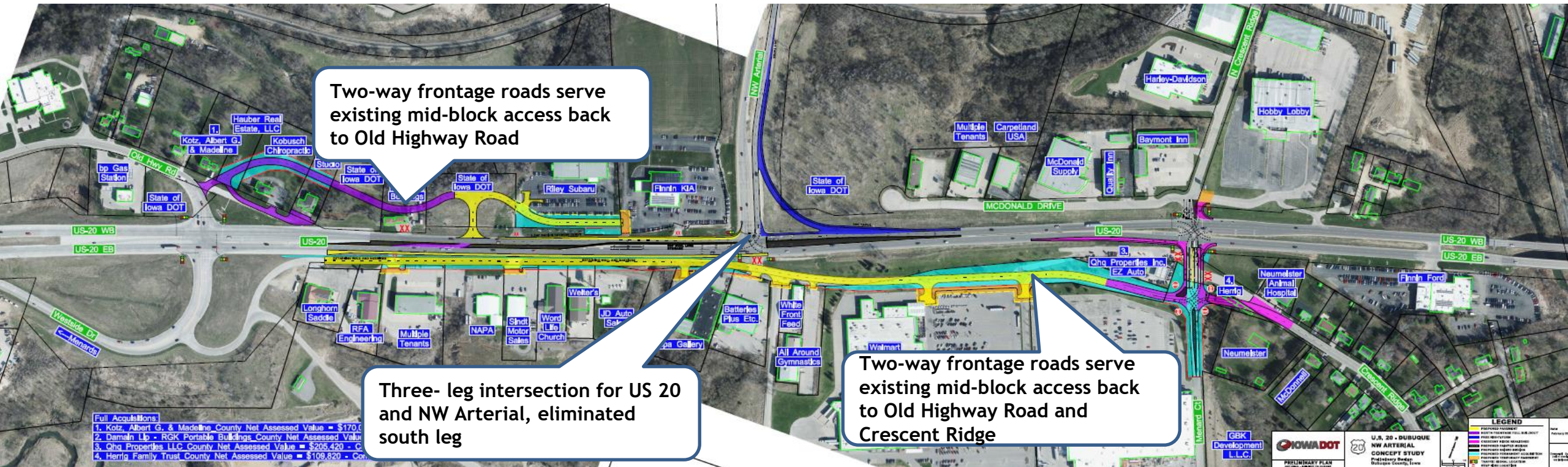
- **IADOT Conducted a US 20 Location Study from SW Arterial to Middle Fork Catfish Creek (2014)**
 - Free Flow Alternative
 - Partial Interchange Alternative
 - Eight-Lane Arterial Alternative
 - Six-Lane Arterial Alternative
- **Improvements at Old Highway (2018)**
 - Part of the improvements suggested in the Six-Lane Arterial Alternative were addressed during construction of US 52/SW Arterial construction
- **Opening of US 52/SW Arterial to the public (2020)**
- **City of Dubuque's request IADOT to improve US 20 / NW Arterial Intersection (2020)**
- **IADOT Conducted Location Study (2021)**
 - Four-Lane Arterial Alternative (getting completed 2022)

SIX LANE ARTERIAL ALTERNATIVE (Year 2014)



| Design Features | Environmental Issues | Right-of-Way /Property Impacts (\$ Million) | Order of Magnitude Cost (\$Million) (Includes ROW) |
|----------------------------|---|---|--|
| 6-Lane Signalized Arterial | <ul style="list-style-type: none"> 2 Recognized Environmental Conditions sites. Potential minor floodplain impact | <ul style="list-style-type: none"> 13.5 acres impacted 0 Full Residential 23 Partial Commercial 3 Full Commercial | \$52 million in 2022 dollars |

FOUR LANE ARTERIAL ALTERNATIVE (Year 2022)



| Design Features | Environmental Issues | Right-of-Way /Property Impacts (\$ Million) | Order of Magnitude Cost (\$Million) (Includes ROW) |
|----------------------------|--|--|--|
| 4-Lane Signalized Arterial | <ul style="list-style-type: none"> 9 Potential regulated materials sites 5 Low risk sites 4 Moderate risk sites | <ul style="list-style-type: none"> 9 Potential regulated materials sites 5 Low risk sites 4 Moderate risk sites | \$11.3 million in 2022 dollars |

NEXT STEPS

- Open to Public Input
- Consideration of Comments From Public
 - Review and respond to all comments
- Select Preferred Alternative
- Consider Programming Project In IADOT Five Year Program

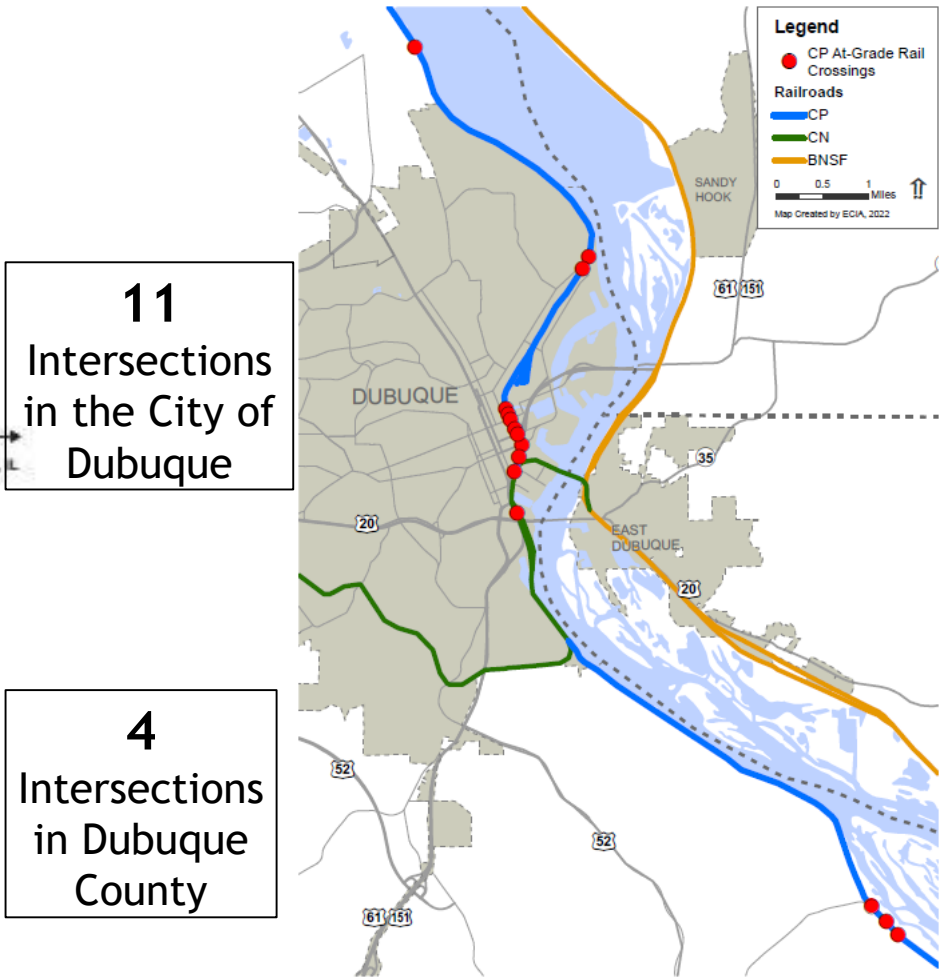
IMPACT OF CANADIAN PACIFIC (CP) AND KANSAS CITY SOUTHERN MERGER (KCS)

Route affected in Iowa

CANADIAN PACIFIC (CP) NETWORK AND SUBDIVISIONS IN IOWA



Intersections affected in DMATS



11
Intersections
in the City of
Dubuque

4
Intersections
in Dubuque
County

NEXT STEPS

- Conducting a Quiet Zone study
- Will apply for Highway-Railroad Crossing Safety Program

THANK YOU

