



# CITY OF NORWALK

## Partnering on Iowa Highway 28



***Luke Parris***  
*Community Development Director*

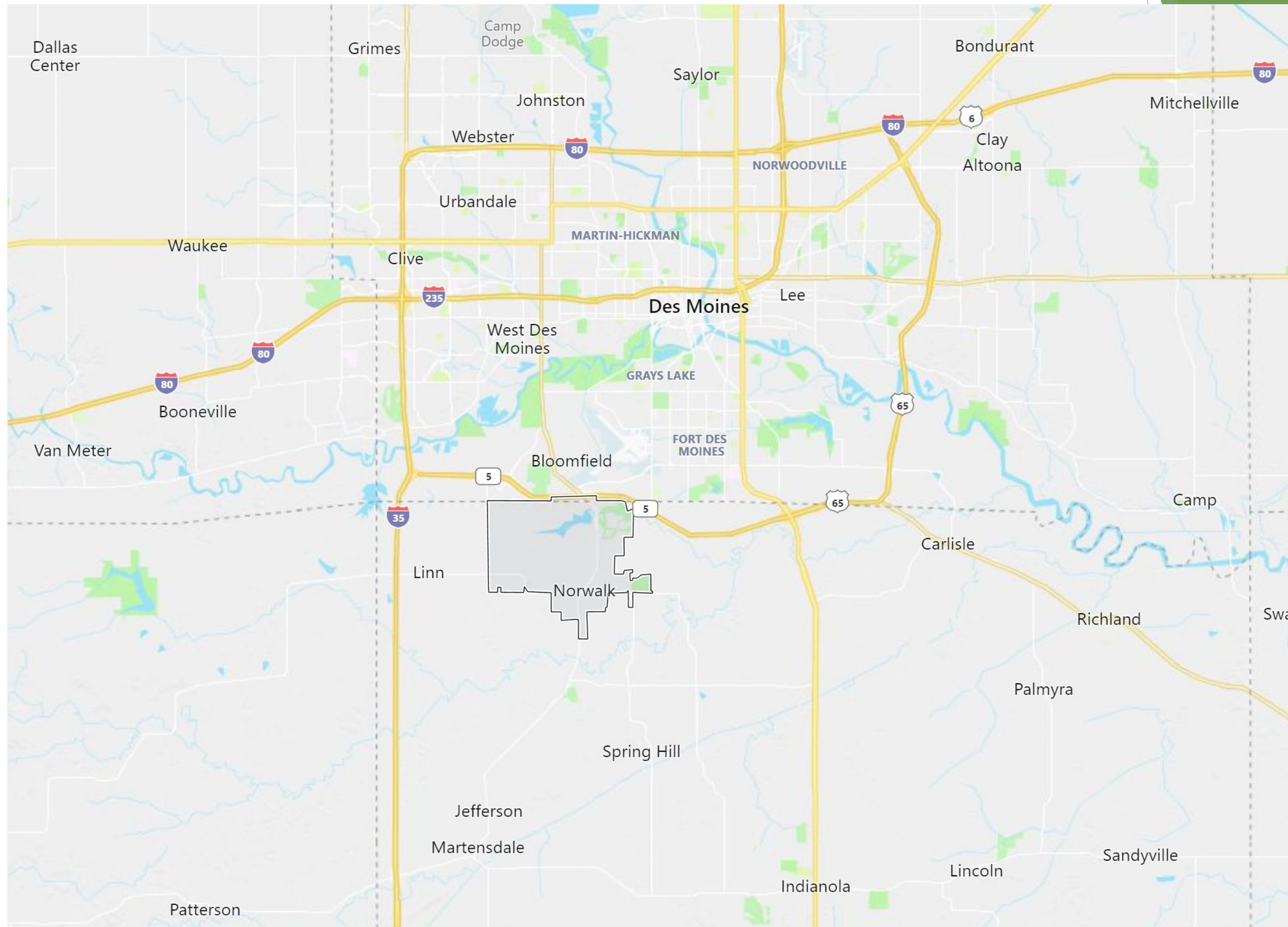


# Summary

- ▶ Past Partnerships
- ▶ Current Plans
- ▶ Future Needs



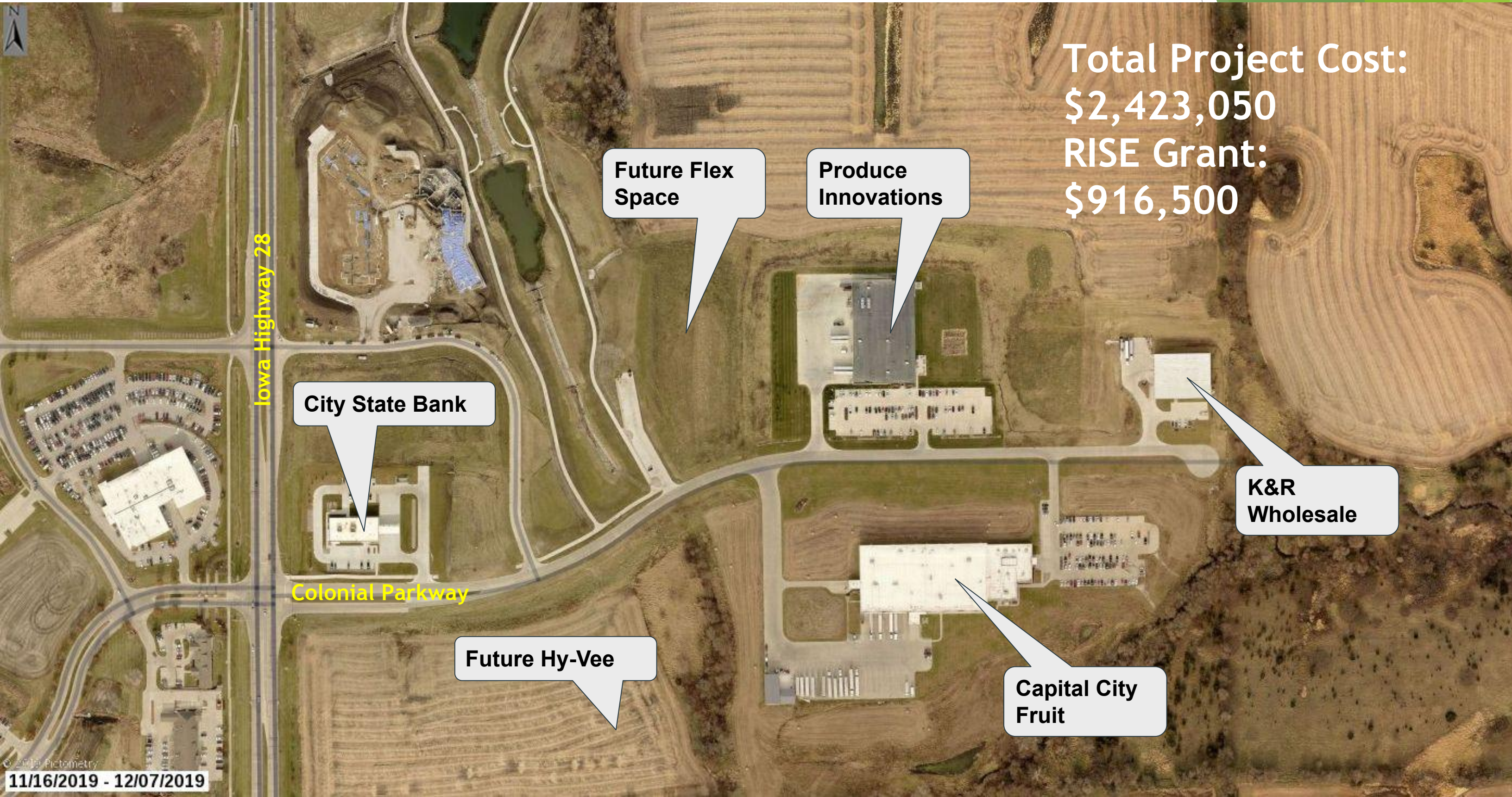
# Location







# Colonial Parkway RISE Grant



Total Project Cost:  
\$2,423,050  
RISE Grant:  
\$916,500

City State Bank

Future Flex  
Space

Produce  
Innovations

K&R  
Wholesale

Future Hy-Vee

Capital City  
Fruit







# Delaware Street RISE Grant

Completed Ancel/Knox Certified Industrial Site

Michael Foods

Windsor Windows

Total Project Cost:  
\$1,153,351  
RISE Grant:  
\$769,317

Iowa Highway 28

Delaware Street

Potential Future Certified Industrial Site -  
240 Acres



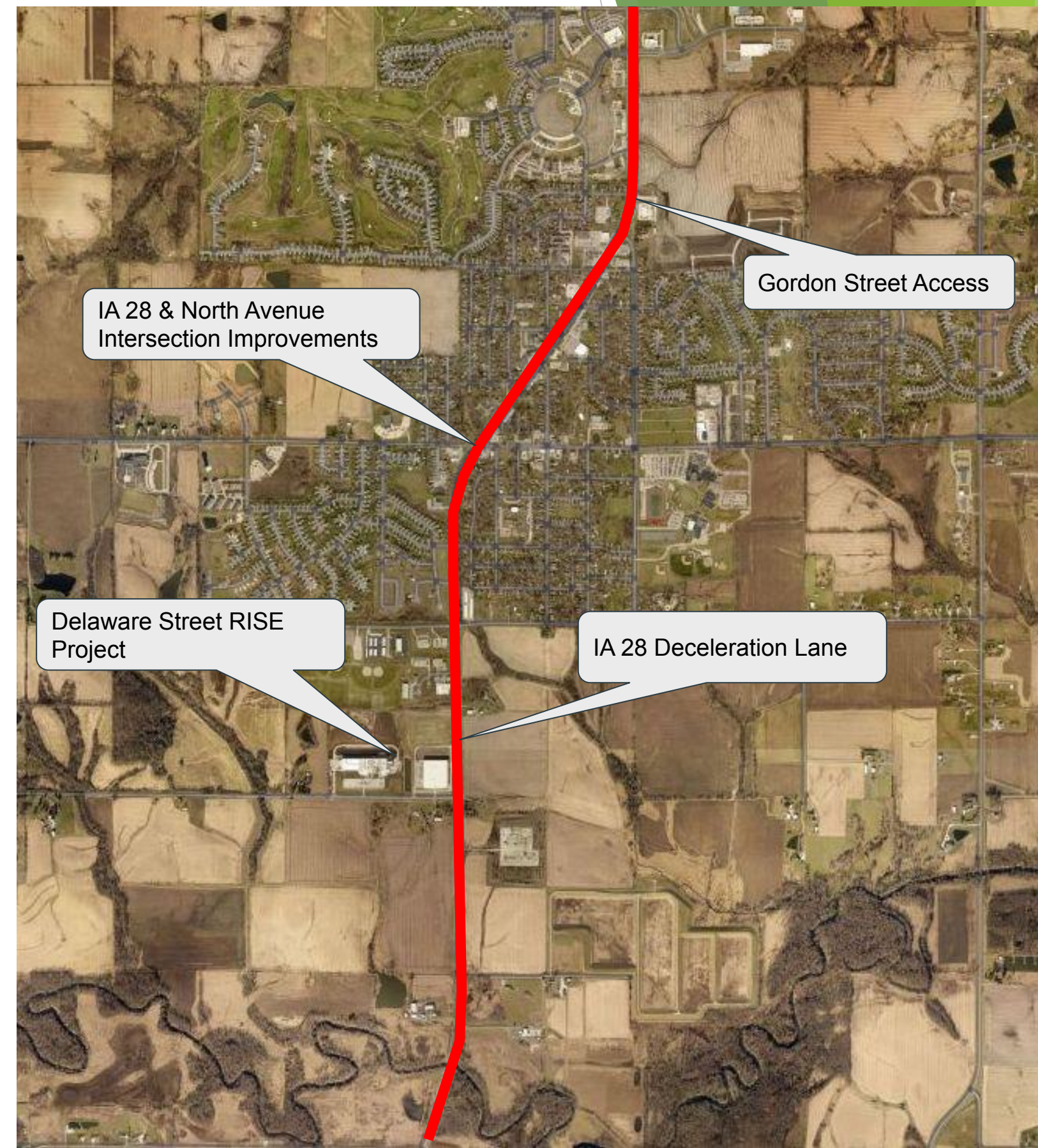
# Additional Projects



- ▶ Traffic Signal at Marketplace Drive & IA 28
  - \$300,000
- ▶ Planned IA 28 & Beardsley Street Intersection Improvements
  - \$2,200,000 - received \$700,000 STBG
- ▶ Gordon Street access to IA 28
  - \$1,330,000
- ▶ Pedestrian Crossing at Colonial Parkway & IA 28
  - \$125,000
- ▶ Deceleration Lane for Delaware Street
  - \$125,000
- ▶ Planned IA 28 & North Avenue Intersection Improvements
  - \$2,000,000 - \$200,000 USTEP - \$130,000 TSIP



# Additional Projects





# Iowa 28 Corridor Study



- ▶ Conducted by Snyder & Associates jointly with the City and Iowa DOT District 5
- ▶ Studied IA 28 from Delaware to IA 5
- ▶ 6,700 to 18,600 vehicles per day in 2018
- ▶ Fairly safe corridor
  - ▶ 1 Fatality & 1 Major Injury from 2012-18
  - ▶ Most crashes are Property Damage Only

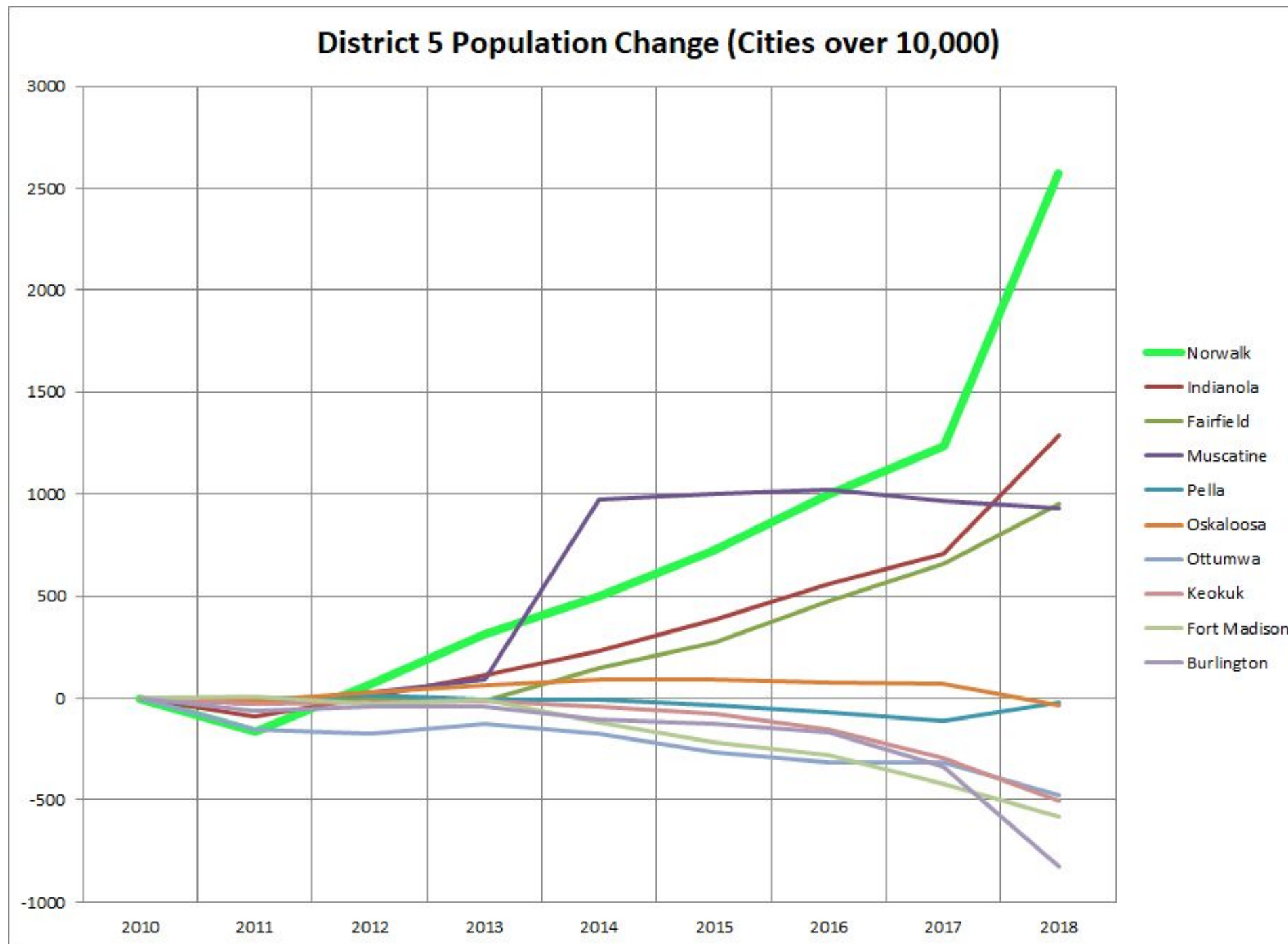


# Iowa 28 Corridor Study



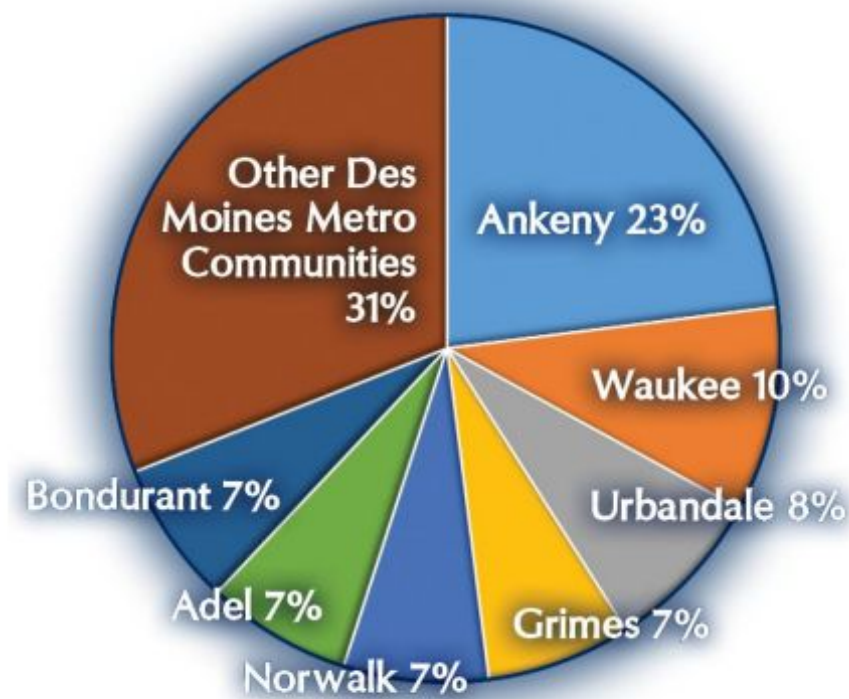
- ▶ Significant growth expected along the corridor
  - ▶ Numerous new projects built since the study was completed in 2018
- ▶ Access Management on corridor
  - ▶ Identified locations for future access & future signals
  - ▶ City was able to remove 3 access points through redevelopment project
- ▶ Growth along the corridor and in the City will increase traffic on Iowa 28
  - ▶ Projected traffic increase to 26,000 peak in 2050







# Top New Construction Cities



Top New Construction Cities



# Future Needs



- ▶ Norwalk is growing in all direction
  - ▶ Potential for 240 to 360 acres of new industrial on the south side of town
  - ▶ Continued commercial development along Iowa 28, including a town center & sports complex with a regional draw
  - ▶ Residential growth everywhere
    - Denser Residential near IA 28 & town center
    - Traditional Suburban neighborhoods
- ▶ School locations funnel most traffic back to IA 28 during morning and afternoon peaks



# Future Needs



- ▶ Iowa Highway 28 is a crucial transportation corridor for Norwalk and northern Warren County
- ▶ Primary goal is to preserve current operations and safety performance
- ▶ The City believes a rehabilitation of Iowa Highway 28 through town would set up the corridor for long-term success



# Questions/Feedback