

Vehicle Registration Rate Book Reference

Iowa Vehicle Registration & Titling (VRT) system has calculators to help you estimate title and registration fees for a vehicle. Calculators also allow you to calculate registration credits for a vehicle. The following calculators are available in VRT under Dealer Inquiry.

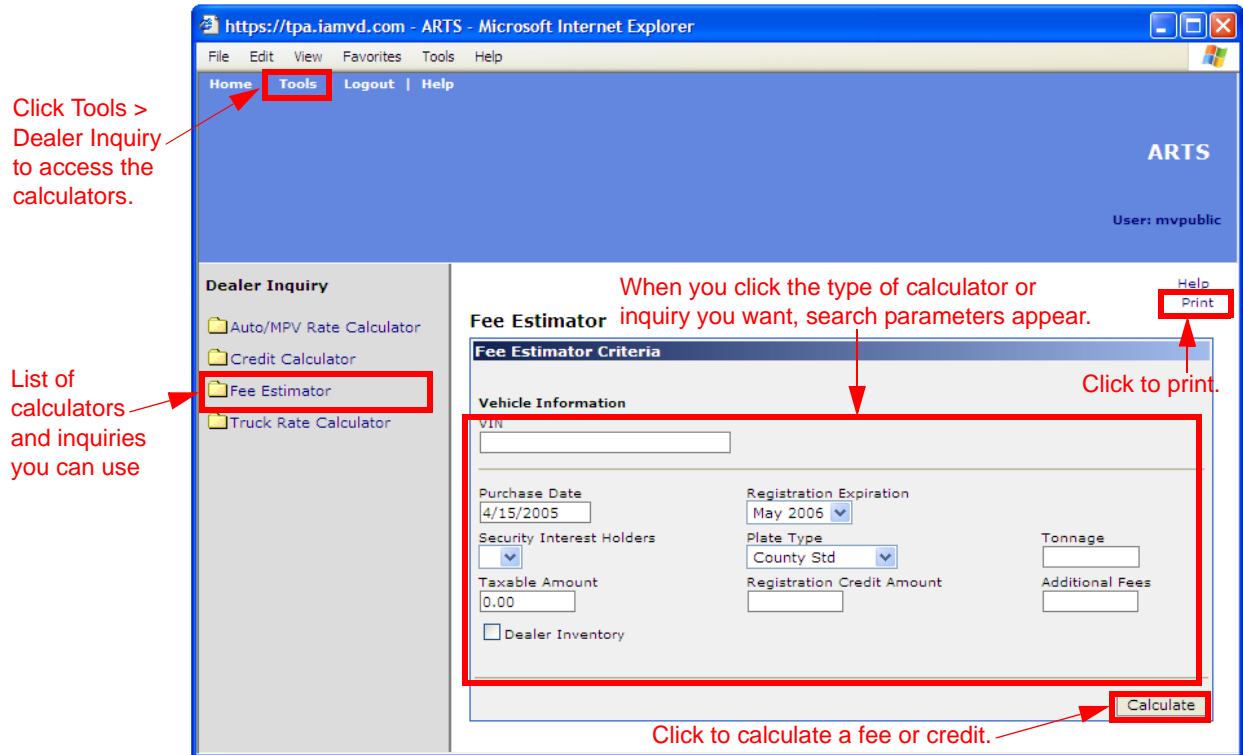
- *Auto/MPV rate calculator*—Enter vehicle information and calculate the annual fee to register the vehicle.
- *Credit calculator*—Enter vehicle information and calculate the approximate amount of registration credit that remains on a current vehicle registration if the vehicle is sold, traded, or junked.
- *Fee estimator*—Enter vehicle information and calculate the total fees for a vehicle, including the registration fee, title fee, plate fee, use tax, and recording fee.
- *Truck rate calculator*—Enter truck tonnage information and calculate the cost of registering a truck that is three tons or more.

This document includes the following:

- Overview.
- Accessing the calculators.
- Calculating a fee or credit.
- Getting help.

Overview

All calculators and inquiries are accessed through the same window. The window lists all calculators and inquiries on the left. When you click the type of calculator or inquiry you want, the search parameters appear on the right.



Accessing the calculators

To access the calculators

- 1 In your Web browser (for example, Microsoft Internet Explorer), go to the following location:
www.iamvd.com/ovs
The Office of Vehicle Services website appears.
- 2 Under **What's New**, click **Vehicle Registration Rate Book**.
The Iowa ARTS console appears.

Note: You may have to click through a security notice to get to the site.

- 3 On the **Tools** menu, click **Dealer Inquiry**.

Tip: If you can't see the entire application, increase your screen resolution to 1024X768 or higher. If your screen setting is lower, you may have to use the scroll bars at the bottom and side of the screen to see the entire application.

Calculating a fee or credit

This section covers:

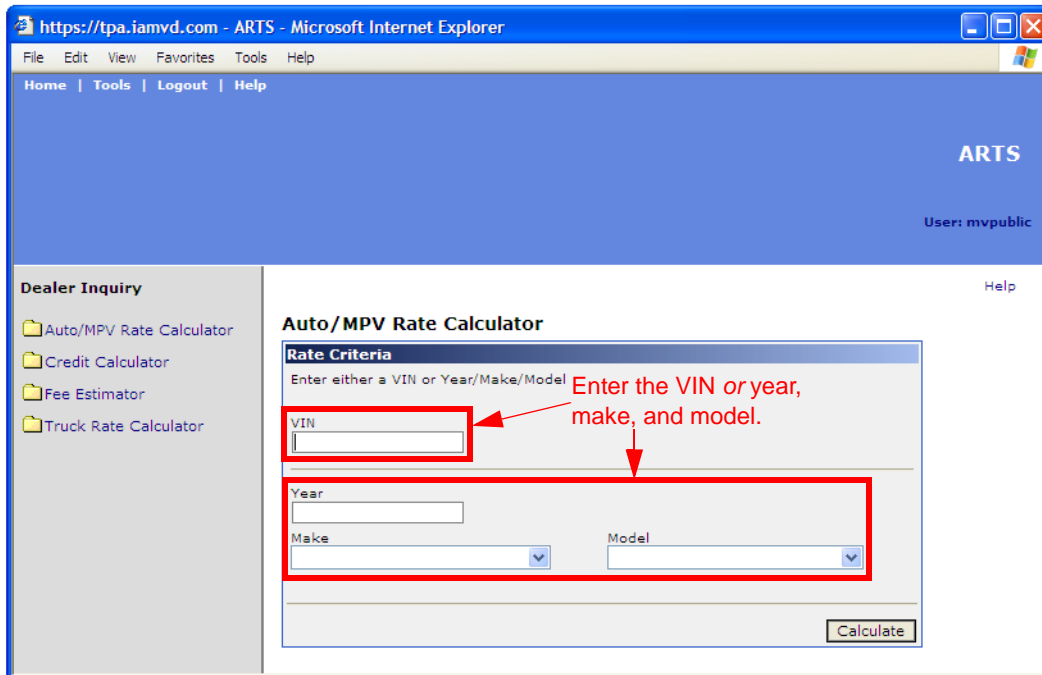
- Calculating auto registration rates.
- Calculating credit.
- Calculating a fee estimate.
- Calculating truck registration rates.

Calculating auto registration rates

You can enter vehicle information and calculate the amount that it will cost to register the vehicle, with an annual fee breakdown depending on the age of the vehicle.

To calculate registration rates

- 1 On the **Tools** menu, click **Dealer Inquiry**.
The Dealer Inquiry window appears.
- 2 On the left side of the window, click **Auto/MPV Rate Calculator**.
The Auto/MPV Rate Calculator search criteria appears.



The screenshot shows a web browser window titled "https://tpa.iamvd.com - ARTS - Microsoft Internet Explorer". The browser's address bar and menu bar are visible. The page content includes a navigation menu with "Home", "Tools", "Logout", and "Help". The main content area is titled "ARTS" and shows the user "User: mvpublic". On the left, there is a "Dealer Inquiry" sidebar with links to "Auto/MPV Rate Calculator", "Credit Calculator", "Fee Estimator", and "Truck Rate Calculator". The main area displays the "Auto/MPV Rate Calculator" form. The form has a title "Rate Criteria" and a prompt "Enter either a VIN or Year/Make/Model". It contains four input fields: "VIN", "Year", "Make", and "Model". The "VIN" field is highlighted with a red box and an arrow pointing to it from the text "Enter the VIN or year, make, and model." The "Year", "Make", and "Model" fields are also highlighted with a red box and an arrow pointing to them from the same text. A "Calculate" button is located at the bottom right of the form.

- 3 Enter the vehicle identification number (VIN) or the year, make, and model.
- 4 Click **Calculate**.
The vehicle details appear. Click the plus sign to expand the registration costs per year, depending on the age of the vehicle.

Important: You can determine the age by subtracting the model year from the current year and adding one year ($\text{current year} - \text{model year} + 1$ year). For example, a 2004 vehicle is two years old ($2005 - 2004 + 1 = 2$).

ARTS - Microsoft Internet Explorer

File Edit View Favorites Tools Help

Home | Tools | Logout | Help

ARTS

User: mvpublic

Dealer Inquiry

- Auto/MPV Rate Calculator
- Credit Calculator
- Fee Estimator
- Truck Rate Calculator

Click to see registration costs per year.

Auto/MPV Rate Calculator

Back

Total Records: 1

VIN/VIN Prefix	Year	Make	Model	Style	Vehicle Type	Cylinders	Weight	ListPrice	Rate Source
MEFM50U83A609655	2003	Mercury	Sable GS	4D	Automobile	6	3300	20300	IA
Years						AnnualFee			
1 - 5					\$216.00				
6 - 6					\$165.00				
7 - 8					\$115.00				
9+					\$35.00				

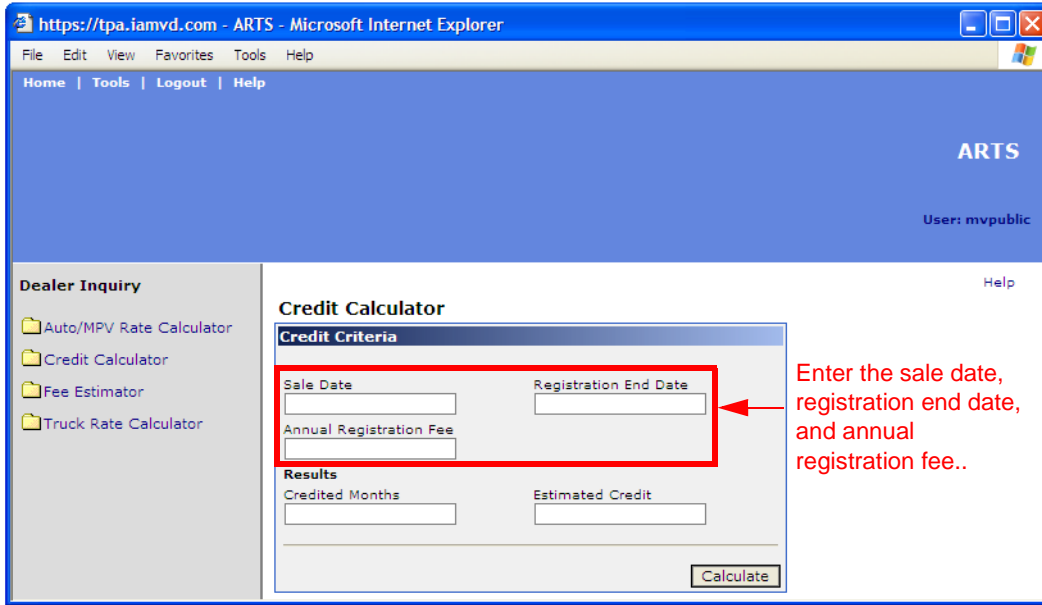
Displays the rate source. If IA, the rate is for a vehicle that exists in the Iowa database. If RB, the vehicle data was supplied by the VINA Rate book.

Calculating credit

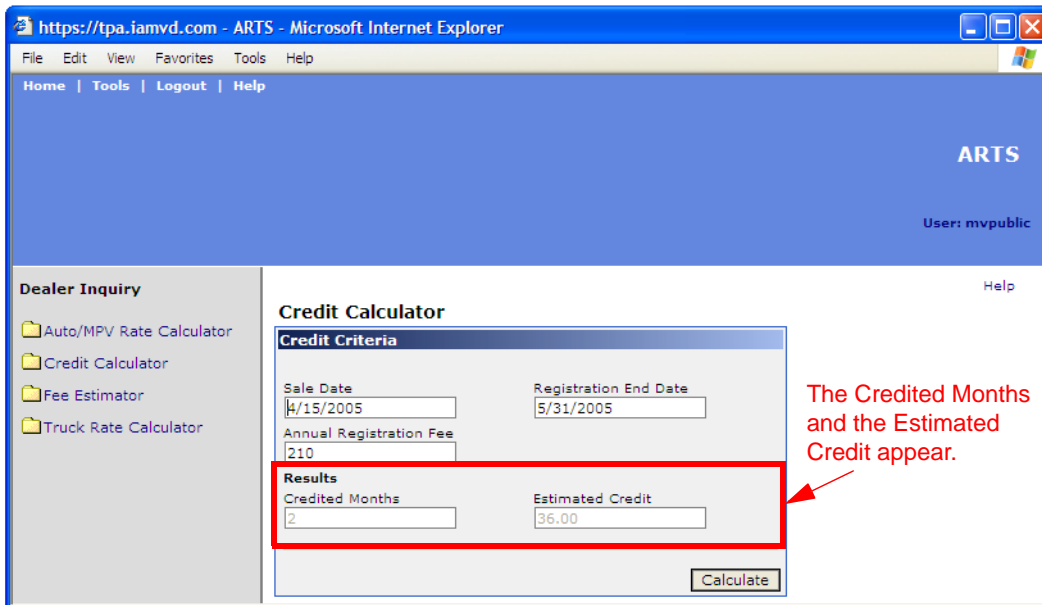
You can calculate the approximate amount of registration credit that remains on a current vehicle registration if the vehicle is sold, traded, or junked.

To calculate credit

- 1 On the **Tools** menu, click **Dealer Inquiry**.
The Dealer Inquiry window appears.
- 2 On the left side of the window, click **Credit Calculator**.
The Credit Calculator search criteria appears.



- 3 Enter the sale date, registration end date, and annual registration fee for the vehicle.
- 4 Click **Calculate**.
The number of credited months and the estimated credit appear under **Results**.



Calculating a fee estimate

You can calculate the estimated amount for all vehicle fees, including the registration fee, title fee, plate fee, use tax, and recording fee.

To calculate a fee estimate

- 1 On the **Tools** menu, click **Dealer Inquiry**.
The Dealer Inquiry window appears.
- 2 On the left side of the window, click **Fee Estimator**.
The Fee Estimator search criteria appears.

https://tpa.iamvd.com - ARTS - Microsoft Internet Explorer

File Edit View Favorites Tools Help

Home | Tools | Logout | Help

ARTS

User: mvpublic

Dealer Inquiry

- Auto/MPV Rate Calculator
- Credit Calculator
- Fee Estimator
- Truck Rate Calculator

Help
Print

Fee Estimator

Fee Estimator Criteria

Vehicle Information

VIN

← You must enter the VIN to calculate the fee.

Purchase Date: 4/15/2005

Registration Expiration: May 2006

Security Interest Holders:

Plate Type: County Std

Tonnage:

Taxable Amount: 0.00

Registration Credit Amount:

Additional Fees:

Dealer Inventory

Calculate

- 3 Enter the VIN and additional vehicle and purchase information.
Hint: To find the Registration Credit Amount, use the Credit Calculator.
- 4 Click **Calculate**.
The fee estimate appears.

https://tpa.iamvd.com - ARTS - Microsoft Internet Explorer

File Edit View Favorites Tools Help

Home | Tools | Logout | Help

ARTS

User: mvpublic

Dealer Inquiry

- Auto/MPV Rate Calculator
- Credit Calculator
- Fee Estimator
- Truck Rate Calculator

Fee Estimator Help
Print

[Back](#)

Vehicle Information

VIN:	5Y2SL62844Z431402	Year:	2004	Make:	Pontiac	Model:	Vibe
Vehicle Type:	Automobile	List Price:	\$16,500.00	Weight:	2700		

Title and Registration Information

Purchase Date:	4/15/2005	Registration Expiration:	5/31/2006	Dealer Inventory:	No
Taxable Amount:	\$0.00	Tonnage:	0	Plate Type:	County Std
Security Interest Holders:					

Registration Details

Start	End	Tonnage	Plate Type	Vehicle Type	Fee Description	Annual Fee	Fee Amount
4/1/2005	5/31/2005	0	County Std	Automobile	Owner Reg Fee, 2 Mon	\$176.00	\$30.00
6/1/2005	5/31/2006	0	County Std	Automobile	Owner Reg Fee, 12 Mon	\$176.00	\$176.00

Fees

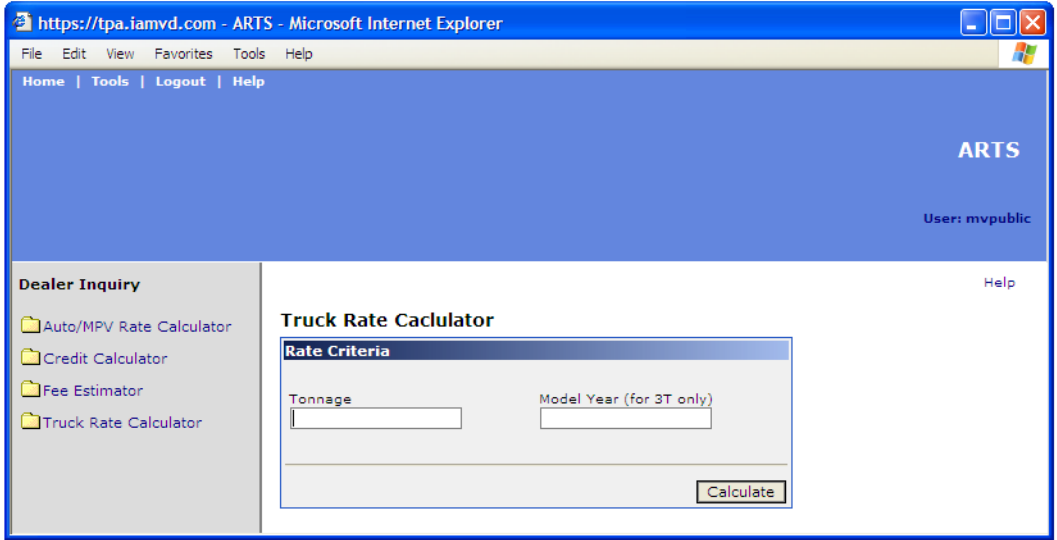
Fee	Annual Fee	Fee Amount	Adjustment	Total
Registration Fee	\$176.00	\$30.00	\$0.00	\$30.00
Registration Fee	\$176.00	\$176.00	\$0.00	\$176.00
Title Fee	\$0.00	\$15.00	\$0.00	\$15.00
County Std Plate Fee - Initial Non-PP	\$0.00	\$0.00	\$0.00	\$0.00
Use Tax	\$0.00	\$0.00	\$0.00	\$0.00
Total				\$221.00
Registration Credit				\$0.00
Additional Fees				\$0.00
Grand Total				\$221.00

Calculating truck registration rates

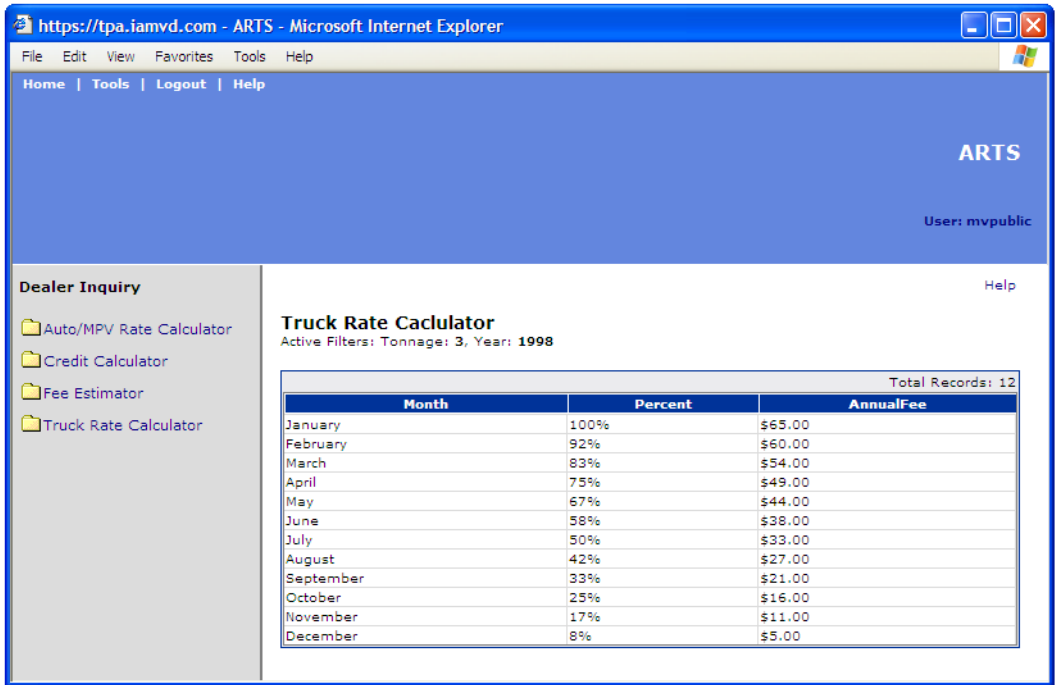
You can calculate the cost of registering a truck that is three tons or more. This displays the cost of the registration depending on the month of the year in which the truck is registered.

To calculate truck rate

- 1 On the **Tools** menu, click **Dealer Inquiry**.
The Dealer Inquiry window appears.
- 2 On the left side of the window, click **Truck Rate Calculator**.
The Truck Rate Calculator search criteria appears.



- 3 Enter the truck tonnage.
 - 4 Enter the model year.
 - 5 Click **Calculate**.
- The cost for registering the truck depending on the month in which the truck is registered appears.



Getting help

If you need help using the dealer inquiries, contact the Office of Vehicle Services at the following numbers.

Phone: 515-237-3040 Fax: 515-237-3056

The telephone is answered Monday through Friday, 8:00 AM to 4:30 PM.