

From: [Fowler, Rhonda](#)
To: [Fowler, Rhonda](#)
Subject: New Link for Toner Return Labels
Date: Wednesday, July 27, 2022 10:49:26 AM
Attachments: [image001.png](#)
[image003.png](#)
[image004.png](#)
[image005.png](#)
[image006.png](#)
[image002.png](#)
[image008.png](#)

This is being sent BCC to all county treasurer contacts.

Lexmark has updated their website and the new link to order return labels is now https://www.lexmark.com/en_us/products/supplies-and-accessories/reuse-and-recycling-program.html.

On this page, use this link:

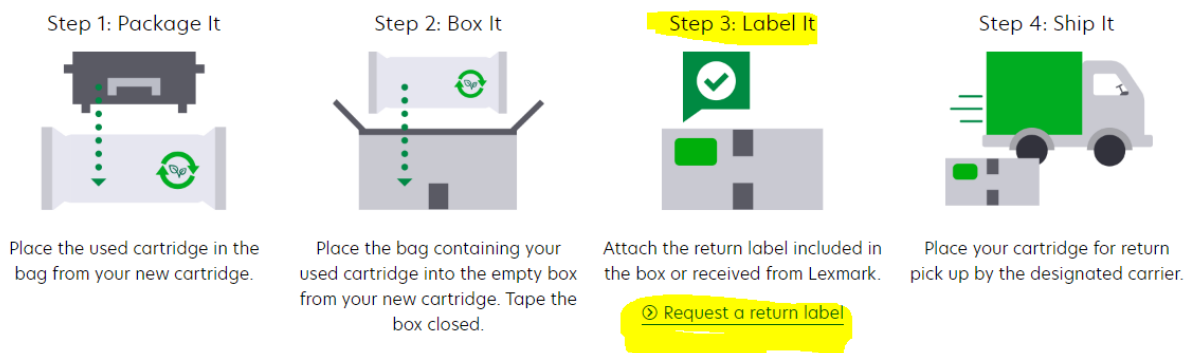
Lexmark Cartridge Collection Program (LCCP)



LCCP provides a collection, recycling and reuse process that's free and easy to use.

Then use this link to order your return labels:

How to recycle your cartridge:



As a reminder:

- You can order multiple labels at a time.
- These same labels can also be used to return used imaging units.

Please let me know if you need any additional information and thank you for participating in this recycling program.

With appreciation,
Rhonda

Rhonda Fowler

LICENSE PLATES, TITLES, AND REGISTRATION ADMINISTRATOR
SYSTEMS & ADMINISTRATION BUREAU
6310 SE CONVENIENCE BLVD, ANKENY, IA 50021
Rhonda.Fowler@iowadot.us  Iowa Department of Transportation
Office: 515-509-1468  @iowadot  @iowadot