

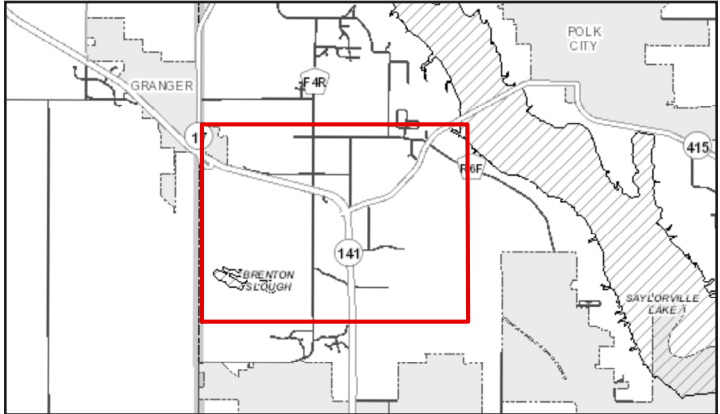
PUBLIC INFORMATION MEETING

IA 141 CORRIDOR STUDY

WELCOME!

The purpose of this meeting is to update citizens and stakeholders on study background data, environmental constraints, and obtain public feedback regarding corridor safety and operations. Feedback received at this meeting will be used to develop intersection and roadway alternatives and eventually develop recommendations for improvements to the area. This public information meeting allows Polk County and the Iowa Department of Transportation (DOT) an opportunity to explain the study and some of the alternatives being considered, and also allows interested parties to express their opinions and ask questions regarding the project.

PROJECT STUDY AREA



CONCEPT REPORT OVERVIEW

Polk County and Iowa DOT have partnered to review traffic operations, safety history, and consideration of future goals for the IA 141 corridor. The study is in response to traffic growth in portions of the corridor segments, crash history and severity at intersections, and land use change.

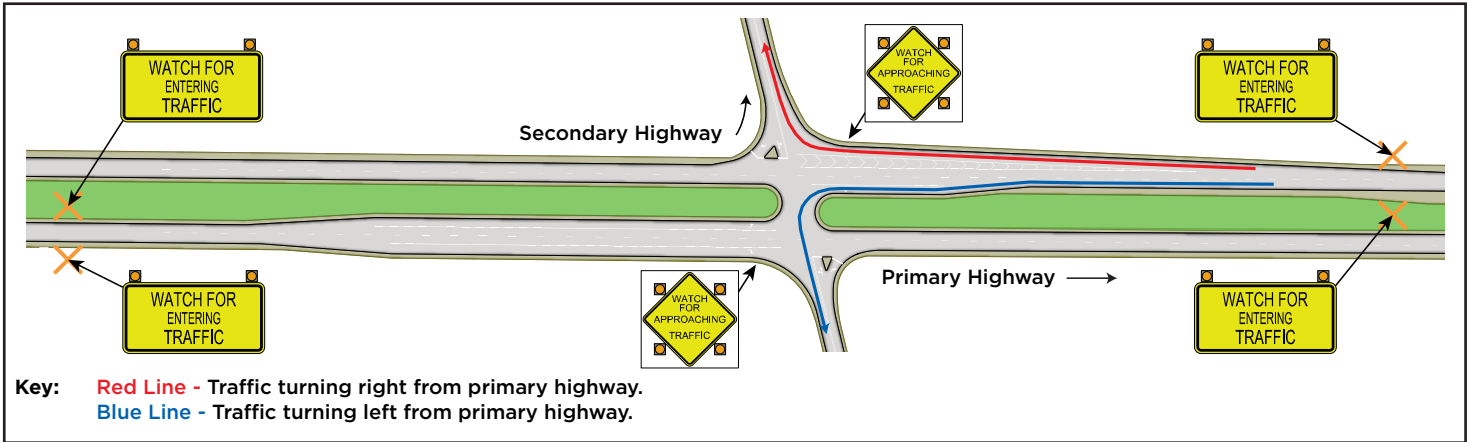
This study will identify short term traffic engineering solutions that can be implemented to improve corridor operations and safety, and long term intersection, interchange, and corridor improvement needs to meet forecasted traffic demands.

The primary purpose of this project is to address safety concerns related to the elevated crash rate at the Iowa 141 and NW 121st Street Intersection. This intersection is ranked #23 statewide on the Iowa DOT Safety Improvement Candidate Location list.

The secondary purpose of the study is to address intersection operational issues. Within the study area, traffic analysis reveals that IA 141 and NW 121st Street, and the intersection of IA 415 and NW Beaver Drive are currently functioning at poor levels of service for some movements during the AM and PM Peaks.

2018 INTERSECTION IMPROVEMENTS - Intersection Collision Warning System (ICWS) and Westbound Offset Turn Lane

*In advance of long term improvements contemplated by this study, the Iowa DOT will construct the following intersection collision warning system improvements at NW 121st and IA-141 in 2018.



COMMENTS/QUESTIONS?

Kurt Bailey, P.E.
Polk County Engineer
(515) 286-3705
Kurt.Bailey@polkcountyiowa.gov

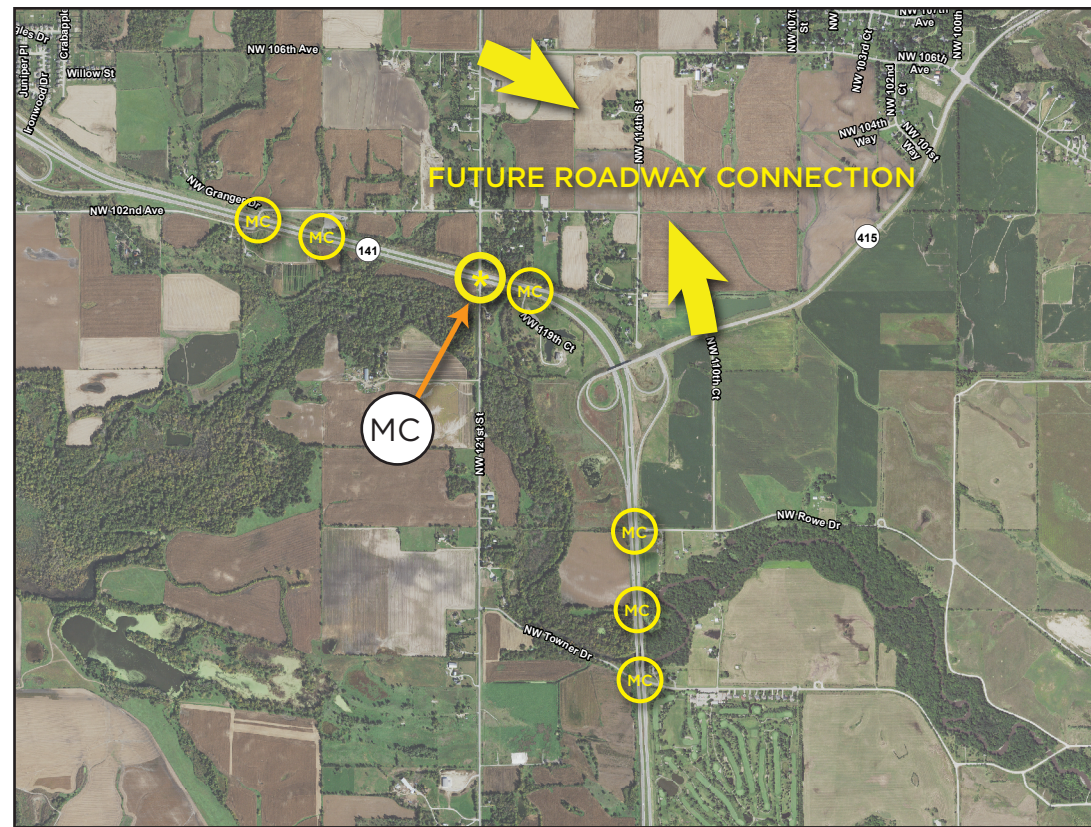
Scott Dockstader, P.E.
Iowa DOT District 1 Engineer
(515) 239-1194
Scott.Dockstader@iowadot.us



ALTERNATIVE 1

North Connection

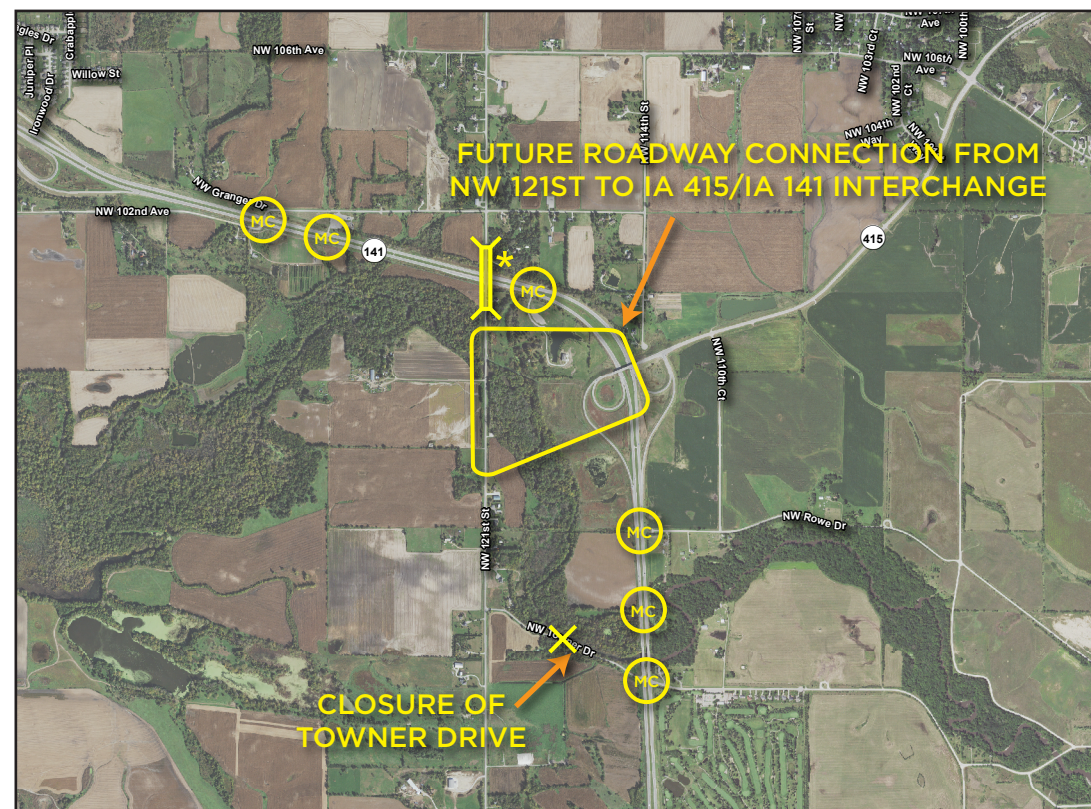
- Median Closure(s)



ALTERNATIVE 2

South Connection

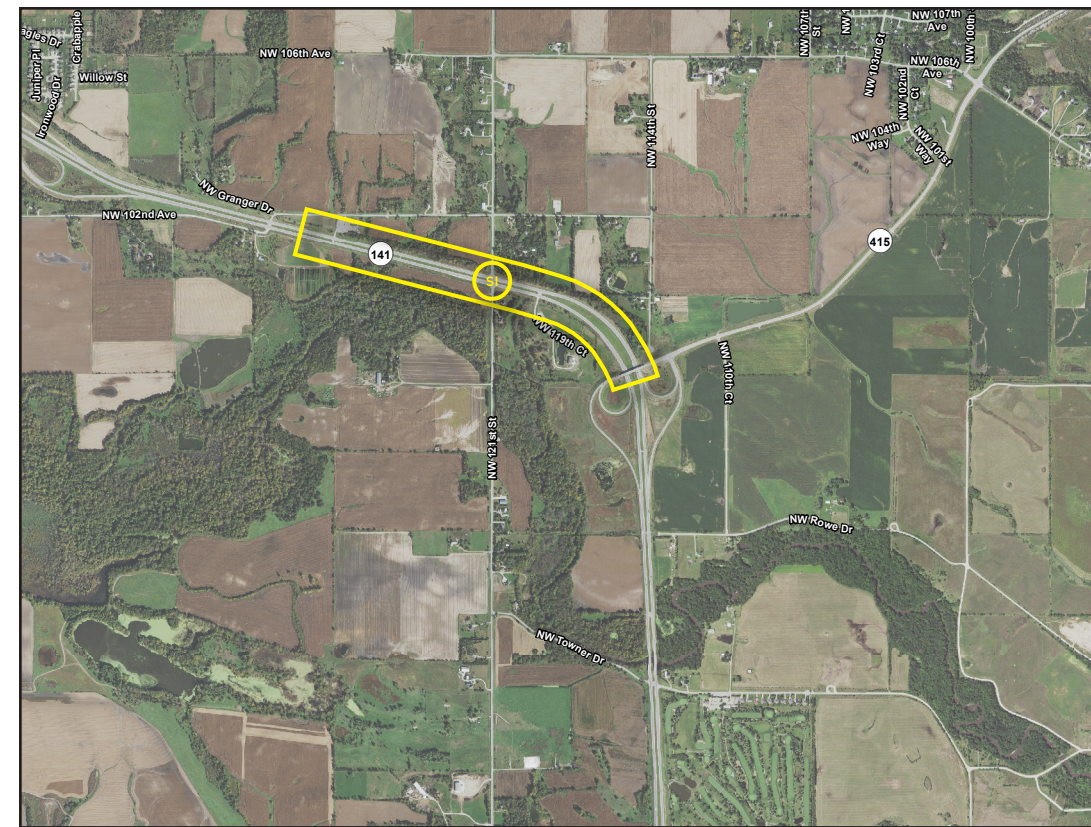
- Overpass at 121st Street
- NW Towner Drive Closure
- Median Closure(s)



ALTERNATIVE 3

Install Traffic Signals

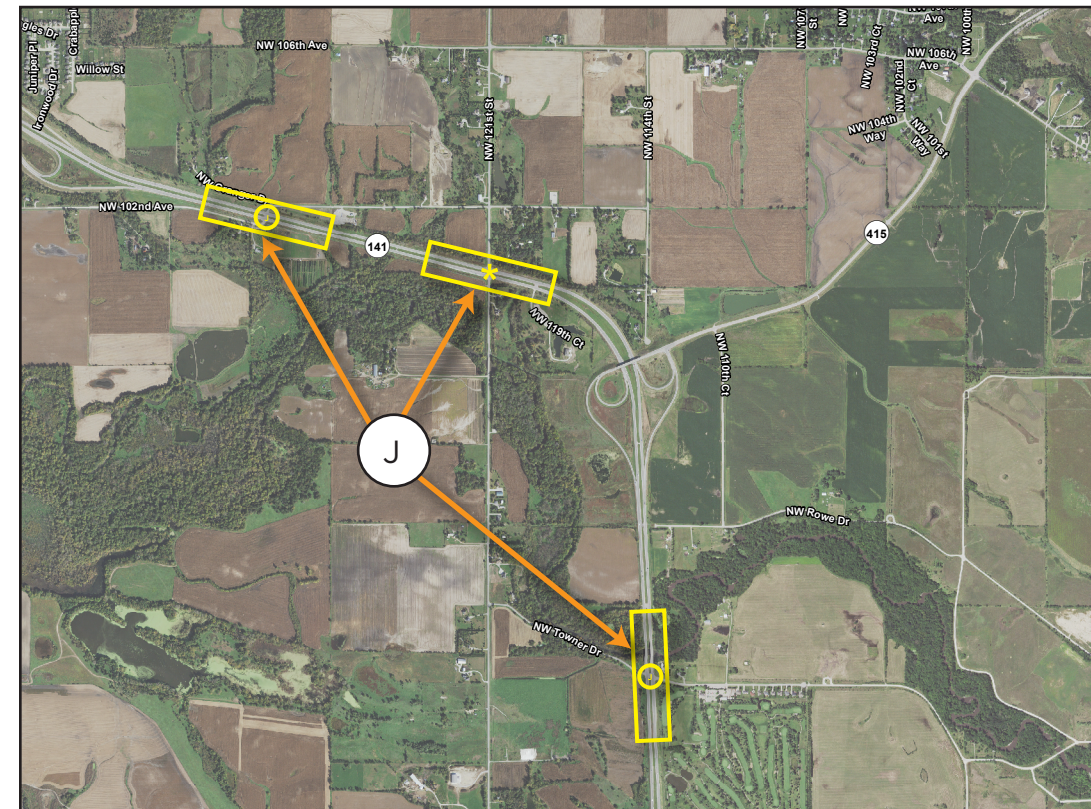
Note - Possible locations of median closures from Alternatives 1 & 2 will also be considered in this alternate.



ALTERNATIVE 4

J-Turns

Note - Possible locations of median closures from Alternatives 1 & 2 will also be considered in this alternate.



LEGEND



ALTERNATIVES (concepts located on the next page)

