

BRIDGE REPLACEMENT

IA 21 over Cedar Creek, 1.1 miles north of junction IA 92.

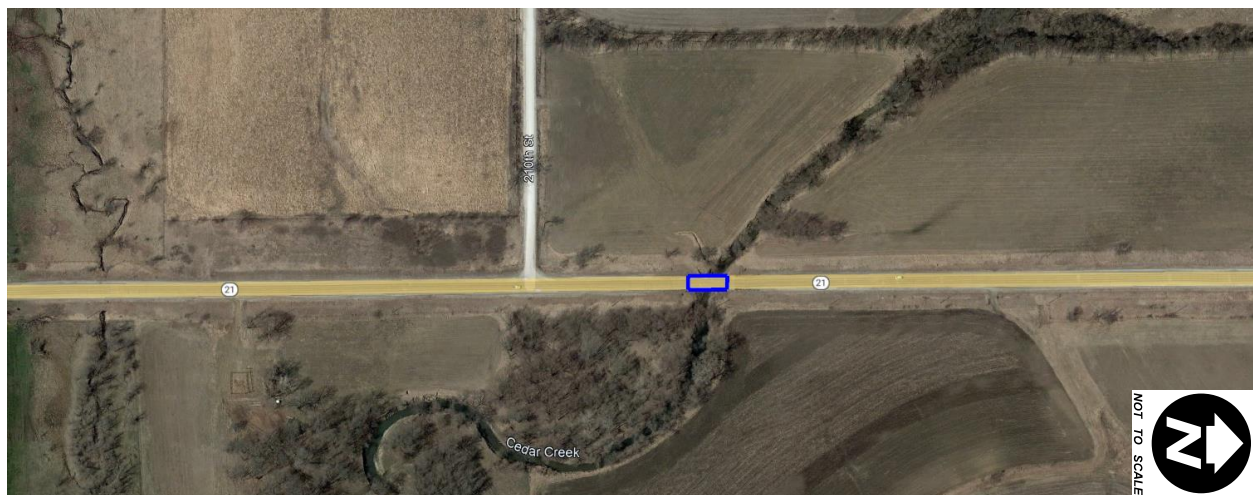
Work includes bridge replacement, new bridge approaches (BR-205 with sleeper slabs), removal and replacement of guardrail including paved shoulders in accordance with current standards.

Traffic Control

Intersections or drives within 1,000 ft of bridge:

- 210th St, 410 ft south of bridge, west side. (to remain open)
- Farm entrance, 690 ft north of bridge, east side. (to remain open)

The existing bridge will be closed to traffic during construction. Traffic control will involve an off-site detour (see the following page). The out of distance travel length is approximately 13.1 miles.





Traffic will be detoured during temporary closure of the bridge. The proposed detour would follow Iowa 92, V 13 (Urbana Avenue), and G 29 (170th Street) to and from the junction of IA 21, in both directions. Access to properties shall be maintained.