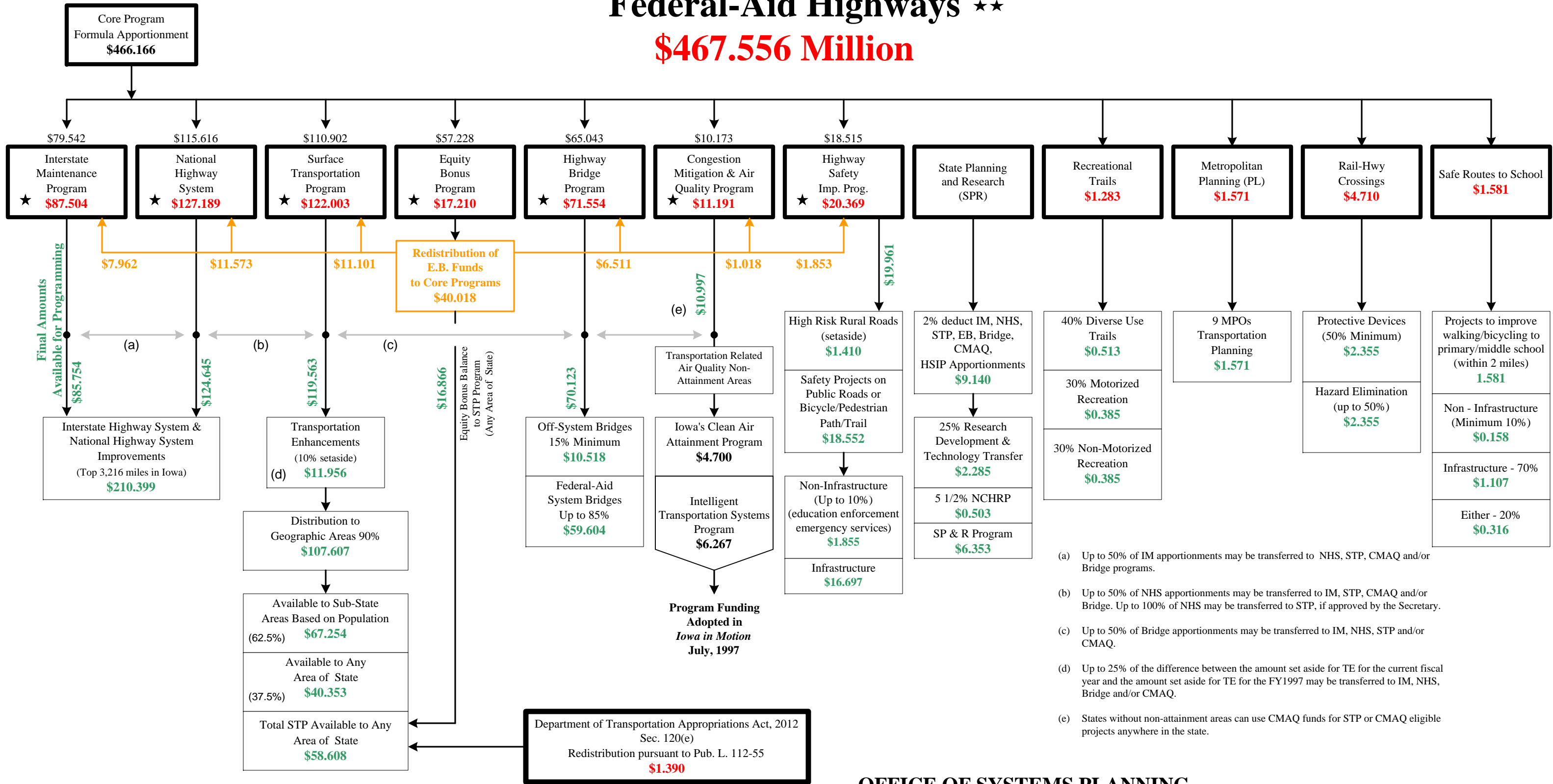


FY 2012 SAFETEA-LU Extension Apportionments & Allocations to Iowa

Federal-Aid Highways **

\$467.556 Million



- (a) Up to 50% of IM apportionments may be transferred to NHS, STP, CMAQ and/or Bridge programs.
- (b) Up to 50% of NHS apportionments may be transferred to IM, STP, CMAQ and/or Bridge. Up to 100% of NHS may be transferred to STP, if approved by the Secretary.
- (c) Up to 50% of Bridge apportionments may be transferred to IM, NHS, STP and/or CMAQ.
- (d) Up to 25% of the difference between the amount set aside for TE for the current fiscal year and the amount set aside for TE for the FY1997 may be transferred to IM, NHS, Bridge and/or CMAQ.
- (e) States without non-attainment areas can use CMAQ funds for STP or CMAQ eligible projects anywhere in the state.

Notes:

- Apportionment and Allocation amounts are subject to annual obligation limitations.
- ★ Total program apportionment prior to takedown of 2% for State Planning & Research Program.
- ★★ Surface Transportation Extension Act of 2011, Part II (Extension Act), Title I of Pub. L. 112-30, as amended by the Surface Transportation Extension Act of 2012, Pub. L. 112-102, and the Surface Transportation Extension Act of 2012, Part II, Division G of Pub. L. 112-141.

OFFICE OF SYSTEMS PLANNING

Sources:
 FHWA Notices: N4510.756; N4510.757; & N4520.219 August 24, 2012
 Department of Transportation Appropriations Act, 2012, Division C, Title I of Pub. L. 112-55
 Surface Transportation Extension Act of 2011, Part II (Extension Act), Title I of Pub. L. 112-30
 Surface Transportation Extension Act of 2012, Pub. L. 112-102
 Surface Transportation Extension Act of 2012, Part II Division G of Pub. L. 112-141