



# DES MOINES AREA MPO

Iowa Freight Advisory Council

March 8, 2019

# DES MOINES TRANSLOAD FACILITY

# MPO Freight Roundtable



- Created in 2004
- Consists of public and private sector members
- Meets bi-monthly
- Mission is to assist in the efficient movement of freight in the Greater Des Moines Region

# Transload Facility - Project History

- 2011 Intermodal Study Findings
  - Freight volume not sufficient to support a intermodal facility
- Other Options
  - Transload



# Intermodal Freight



# Intermodal vs. Transload

- Transload Freight
  - Variety of commodities
  - Shipped in variety of rail cars
  - Uses multiple modes of transportation
  - Unique handling requirements





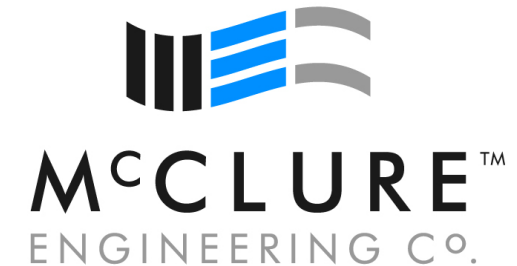
# Transload Freight



# Project History

---

- 2014 Des Moines Rail Transload Feasibility Study
  - Feasibility analysis of specific site in Des Moines
  - Hired McClure Engineering, ERS, Via Rail to complete study



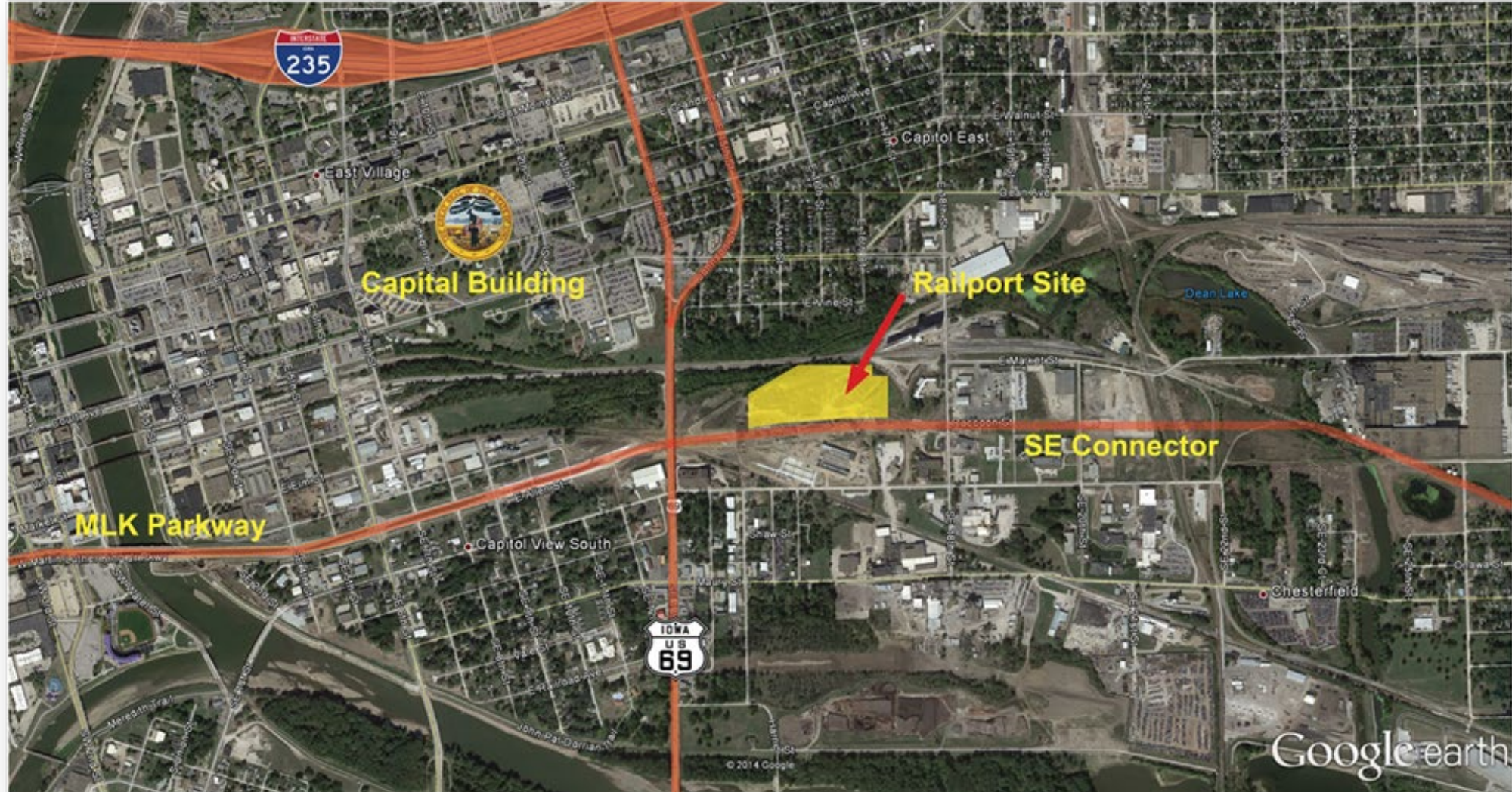


# Funding

- **\$1.7 million** – Rail Revolving Loan and Grant from the Iowa DOT
- **\$11.2 million** – BUILD Grant from the U.S. Department of Transportation

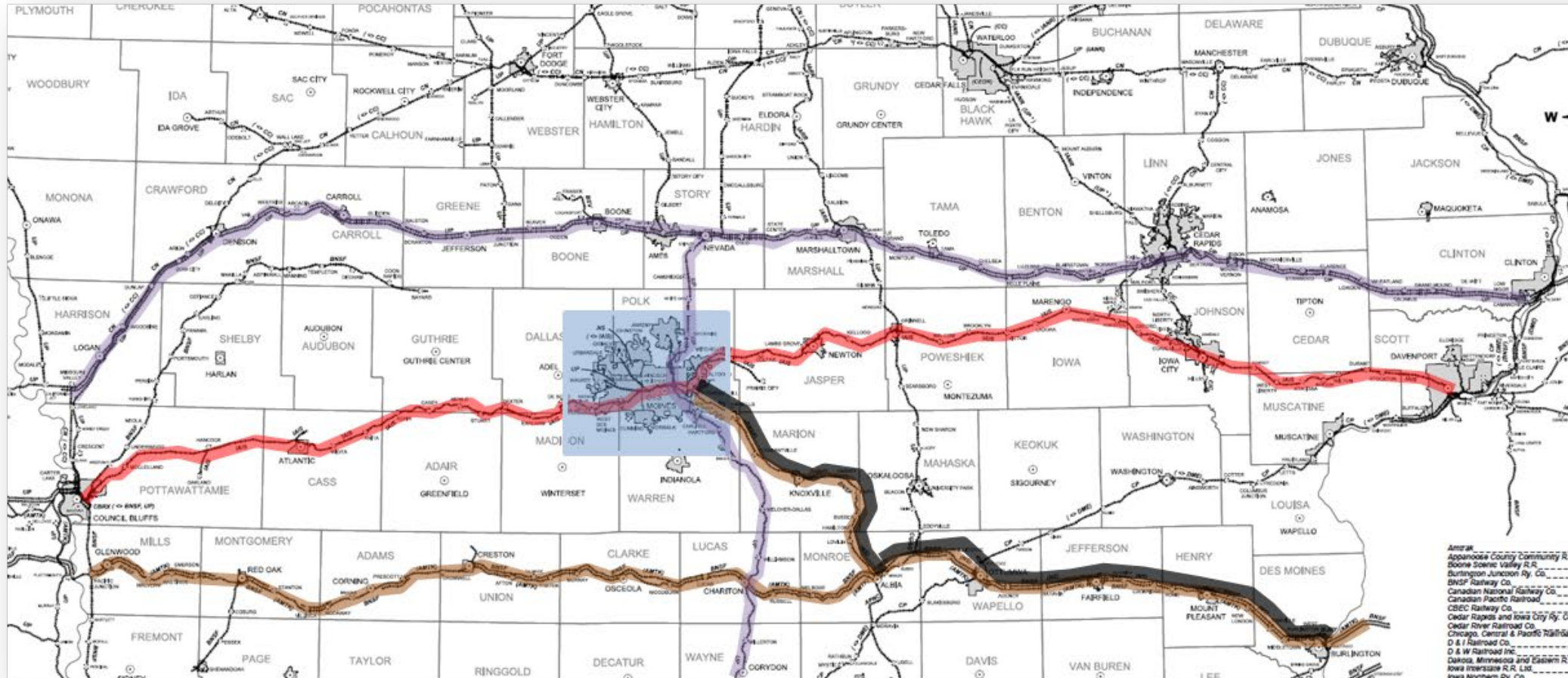


# Site Selection





# Railroad Access



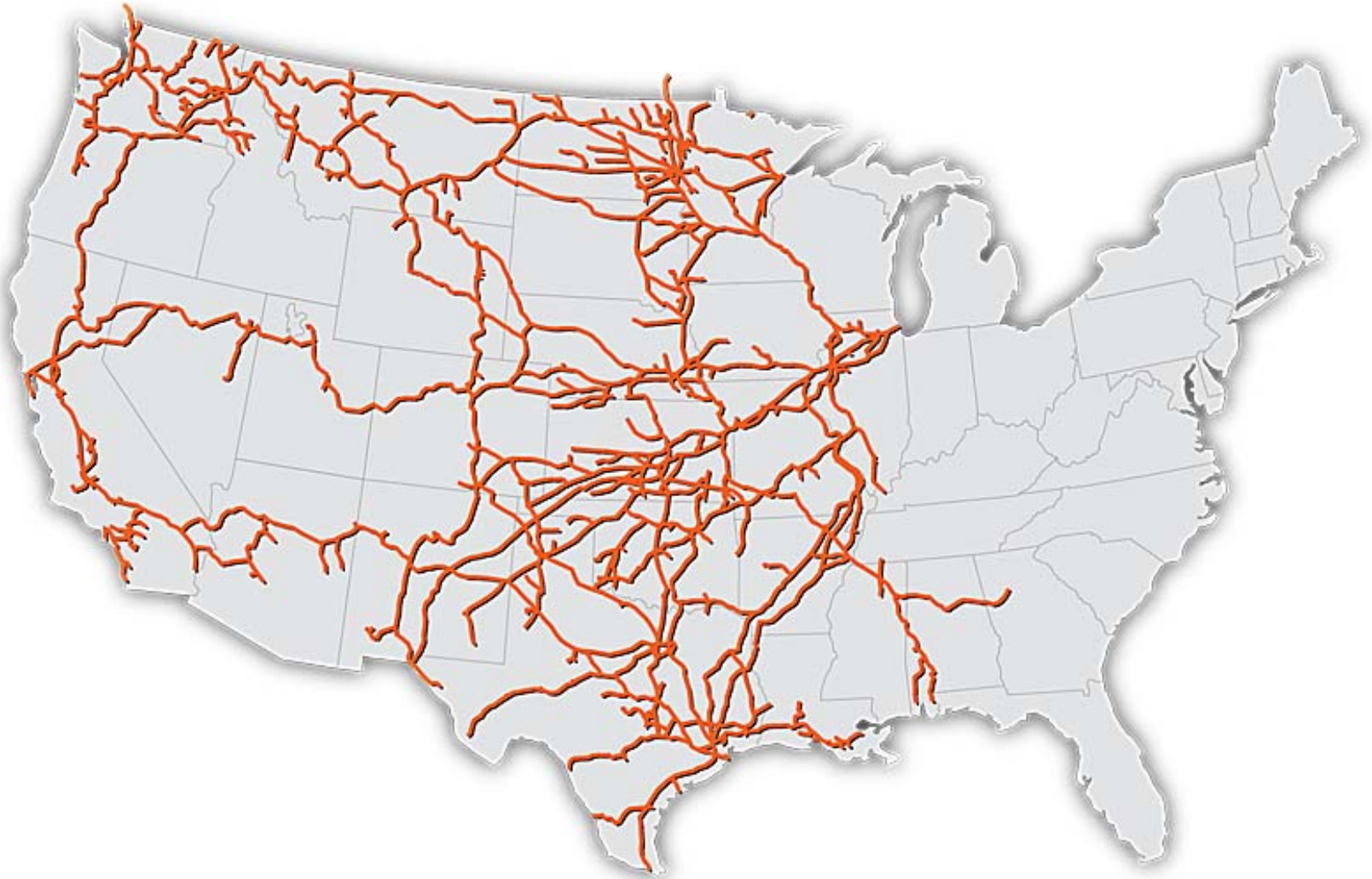
Union Pacific

BNSF Railway

NS Railway

Iowa Interstate

# Railroad Access



# Railroad Access





# Railroad Access



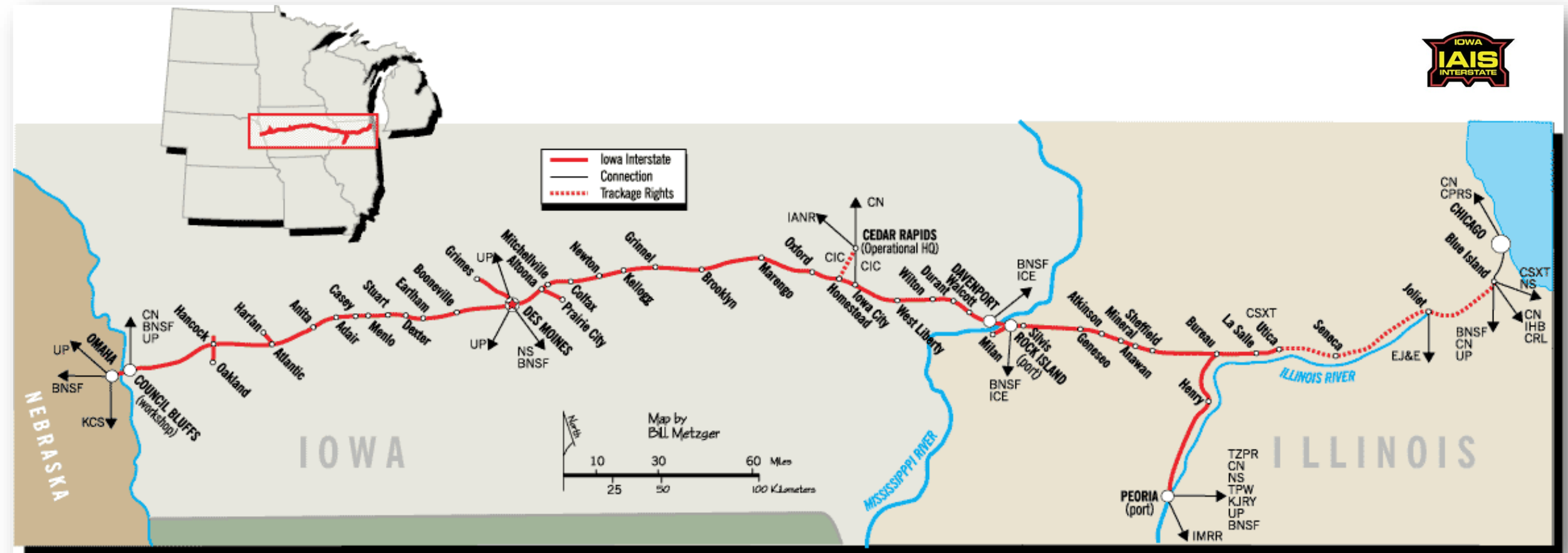
# Railroad Access



CSX SYSTEM MAP



# Railroad Access

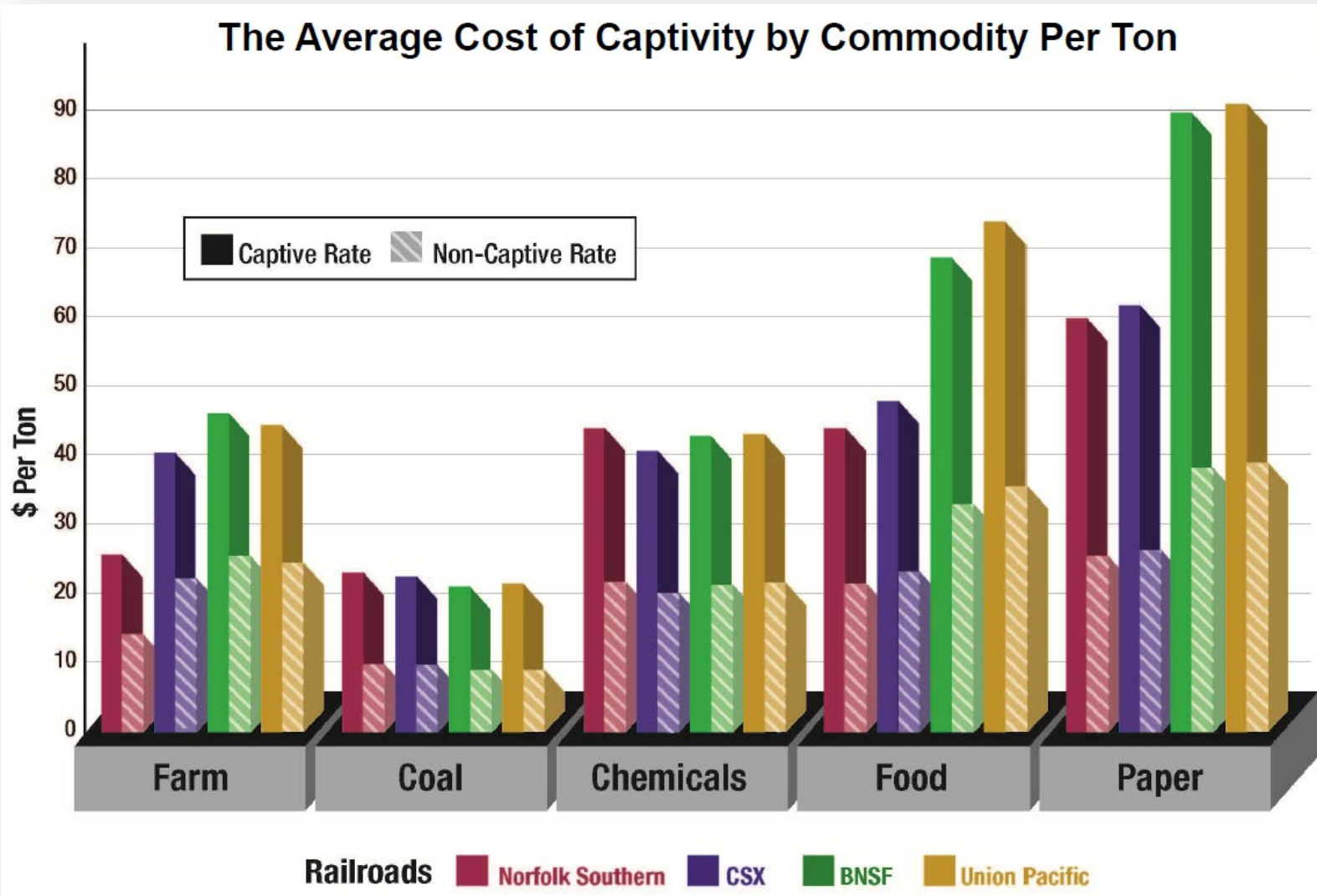




lowa Interstate



# Competitive Advantage



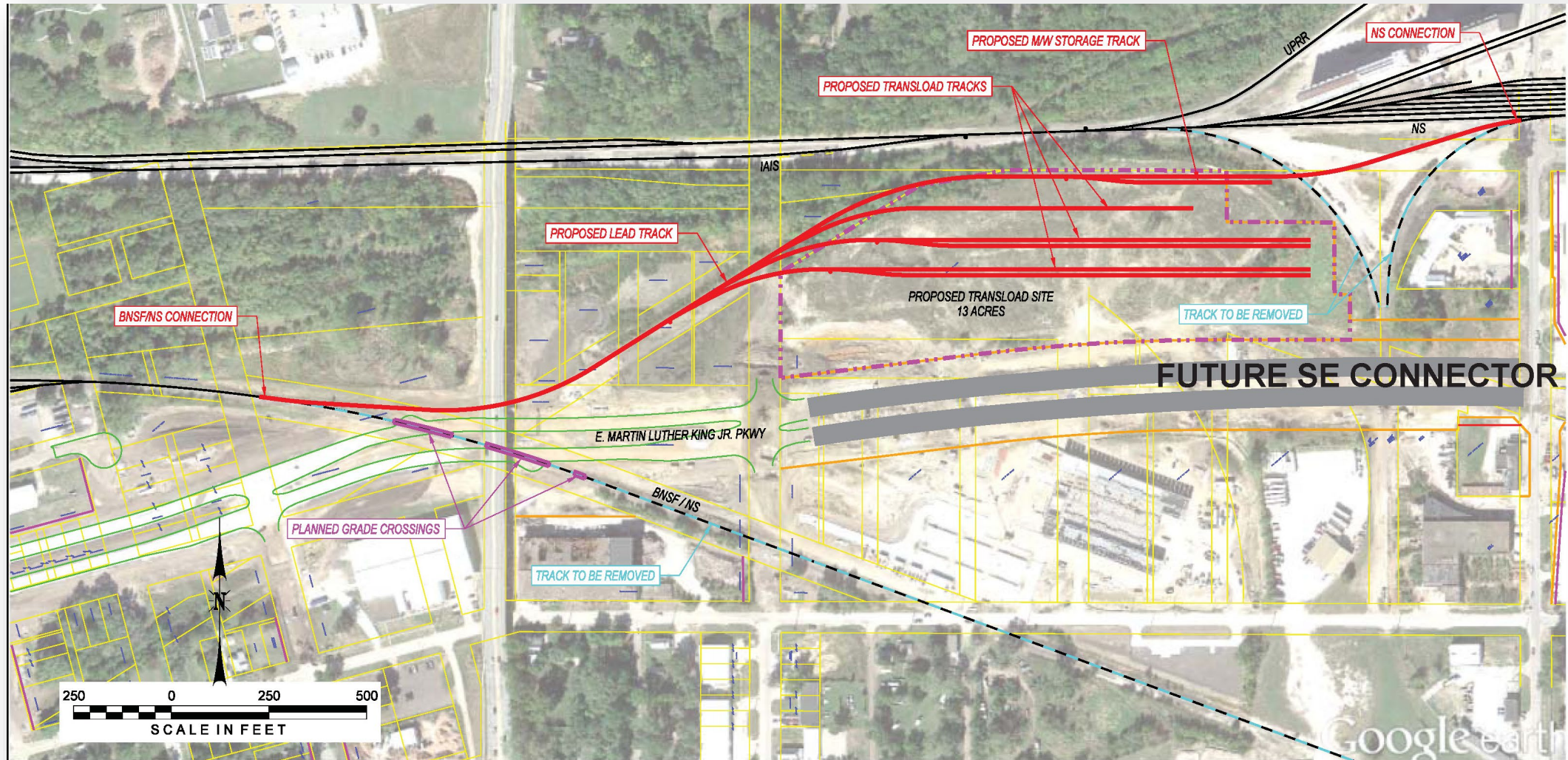


# Regional Benefits

---

- Greater access to national and global markets
- More attractive to existing and new business
- Provides more cost effective shipping option
- Diverts city-to-city truck traffic
  - Lower emissions
  - Reduces maintenance needs on roadways
  - Reduces road congestion

# Potential Site Layout & Challenges

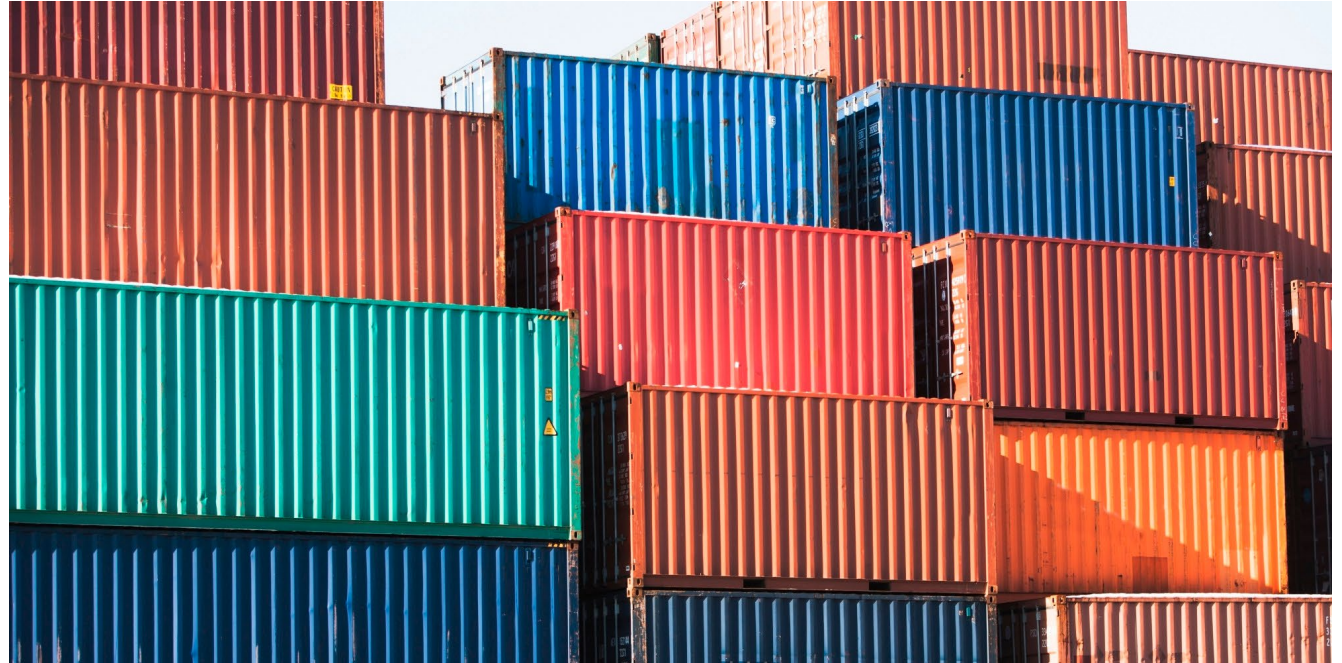


# CONTAINER LOCATOR



# MPO Freight Roundtable

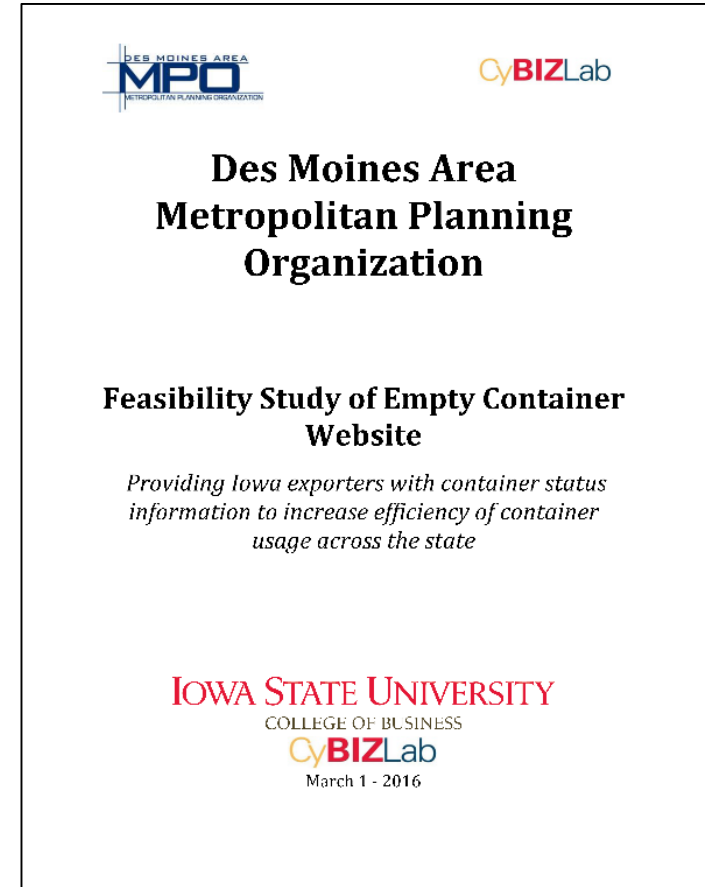
- Identified problem: Freight containers entering the state full and leaving empty
- Set goal: Connect Iowa shippers to empty containers



# Project Development

## Phase 1 – Feasibility Study

- Determined that project is feasible
- Need to use data mining company
- Negotiated with Datamyne





# Project Development

## Phase 2 – Website Development

- How will data be uploaded
- Website design
- Website administration
- How will the website be maintained



# Partners



CyBIZLab



# Website development

## CyBIZ Lab

- Website is fully functional and open to the public
- [ContainerLocator.com](http://ContainerLocator.com)
- Built on the wordpress.org platform



## SEARCH CONTAINERS

### Basic Search

[User Search History](#)

Date Container Cleared Port:



Consigned City within Iowa:

☐ 50855

☐ Ackley

☐ Ackworth

☐ Adair

☐ Adel

☐ Afton

☐ Agency

☐ Ainsworth

☐ ...

If city is not listed please enter:

### [Advanced Search](#)

[SEARCH](#)[RESET FORM](#)

## CONTAINER SEARCH

[BACK](#)
[« Previous](#)
[1](#)
[2 »](#)

Total Records Found : 79

Search:

CONSIGNEE CITY	CONSIGNEE STATE	CARRIER NAME	CARRIER CODE	CONTAINER SIZE	DATE CONTAINER CLEARED PORT	PORT OF ARRIVAL	BILL OF LADING NUMBER	MASTER BILL OF LADING NUMBER	CONTAINER TYPE	CONTAINER NUMBER
ANKENY	IOWA, IA	COHESION FREIGHT (HK) LIMITED	COHE	40	05-28-17	SEATTLE,WA	COHEQIN7040324	COSU6155751590	Dry	<a href="#">Show Container # Click here</a>
ANKENY	IOWA, IA	OCEANBRIDGE SHIPPING LTD	OCBS	40	05-27-17	LONG BEACH,CA	OCBSS00607748	HLCUAKL170211960	Dry	<a href="#">Show Container # Click here</a>
ANKENY	IOWA, IA	BLUE ANCHOR AMERICA LINE (BLUE ANCHOR LINE)	BANQ	40	05-24-17	NORFOLK,VA	BANQBLQ0507881	CMDUGEN0825302	Dry	<a href="#">Show Container # Click here</a>
ANKENY	IOWA, IA	SWIFT GLOBAL LINE	SWGB	20	05-24-17	NEW YORK/NEWARK AREA, NEWARK, NEW JERSEY	AEHS143117003712	MSCUUB729848	Dry	<a href="#">Show Container # Click here</a>



## SCALES

New federal regulations require that freight must be weighed before it is shipped. To provide more information to the public and our members, the Des Moines Area MPO has created an interactive map listing all certified scale and weigh stations in the state of Iowa. Below is that map. Clicking on each site will bring up its address, contact information, and number of scales and corresponding scale weights. Data is provided by the Iowa Department of Agriculture and Land Stewardship. Data was collected in January 2017.



# Initial Numbers

- For the month of February, 2016: **3,891** containers were destined for the State of Iowa
- This projects to between **45k – 50k** containers coming into the state yearly
- For the MPO Planning Area: **622** monthly and **7k – 9k** yearly
- For the CIRTPA Planning Area: **269** monthly and **3k – 4k** yearly



# Lessons Learned

- Patience is key
  - Over 2 years since initial meeting with CyBIZ Lab
- Data is everything
  - Data source is public
  - Some data is not immediately available





# Next Steps

- Additional features will be developed
- Continue to promote the website
- Determine value and funding options



# Next Steps

## Explore Other Data Sources

- User generated
- Other?

## Data Analytics

- Track hits per day
- Track searching and website usability





# Next Steps

## Funding Considerations

- User fee
- Sponsorship
- Some combination of both





**BEST USER OF TECHNOLOGY**  
DES MOINES METROPOLITAN PLANNING ORGANIZATION



# THANK YOU

Todd Ashby, AICP  
Executive Director  
Des Moines Area MPO  
[tashby@dmampo.org](mailto:tashby@dmampo.org)  
515-334-0075