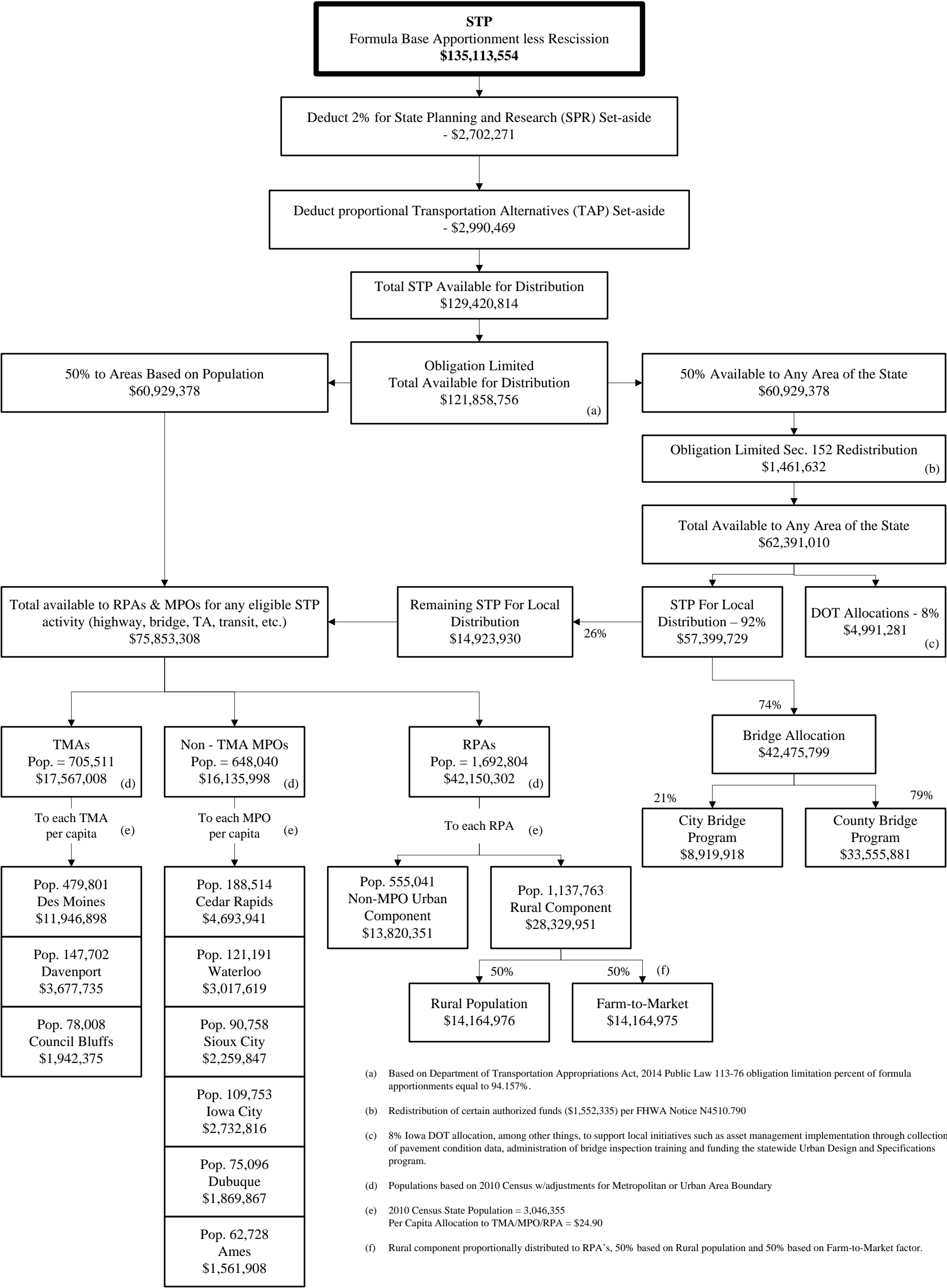


STP Program Target Allocation Methodology

Federal FY2015 Apportionments to Iowa



(a) Based on Department of Transportation Appropriations Act, 2014 Public Law 113-76 obligation limitation percent of formula apportionments equal to 94.157%.

(b) Redistribution of certain authorized funds (\$1,552,335) per FHWA Notice N4510.790

(c) 8% Iowa DOT allocation, among other things, to support local initiatives such as asset management implementation through collection of pavement condition data, administration of bridge inspection training and funding the statewide Urban Design and Specifications program.

(d) Populations based on 2010 Census w/adjustments for Metropolitan or Urban Area Boundary

(e) 2010 Census State Population = 3,046,355
Per Capita Allocation to TMA/MPO/RPA = \$24.90

(f) Rural component proportionally distributed to RPA's, 50% based on Rural population and 50% based on Farm-to-Market factor.

Sub-allocation of STP Funds pursuant to **MAP-21**
Per overall Source: FHWA Notices: N4510.788, 789, 783, 790, 792, N4520.235