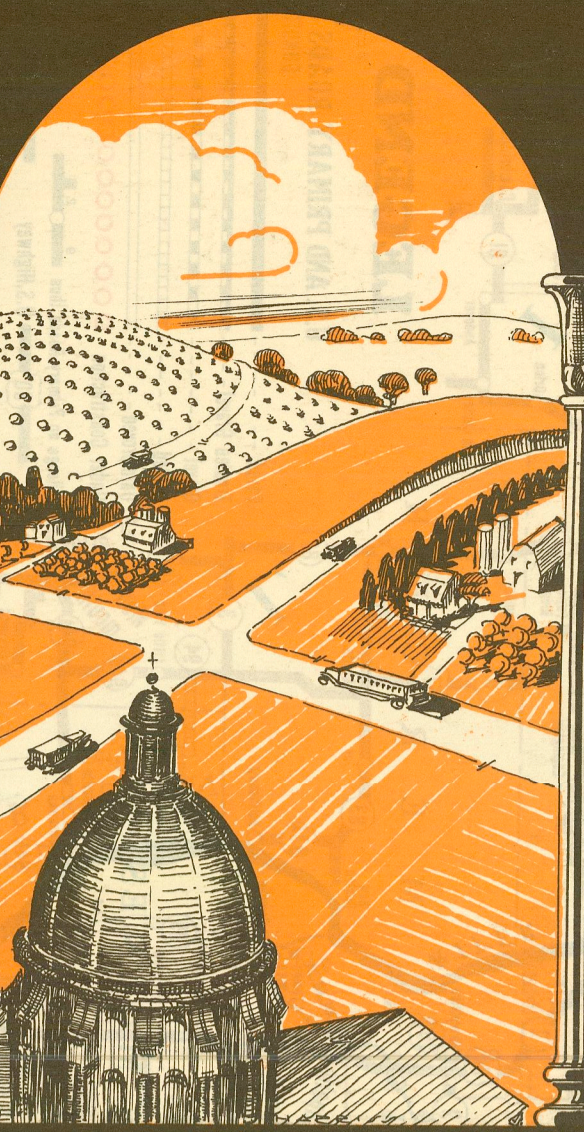
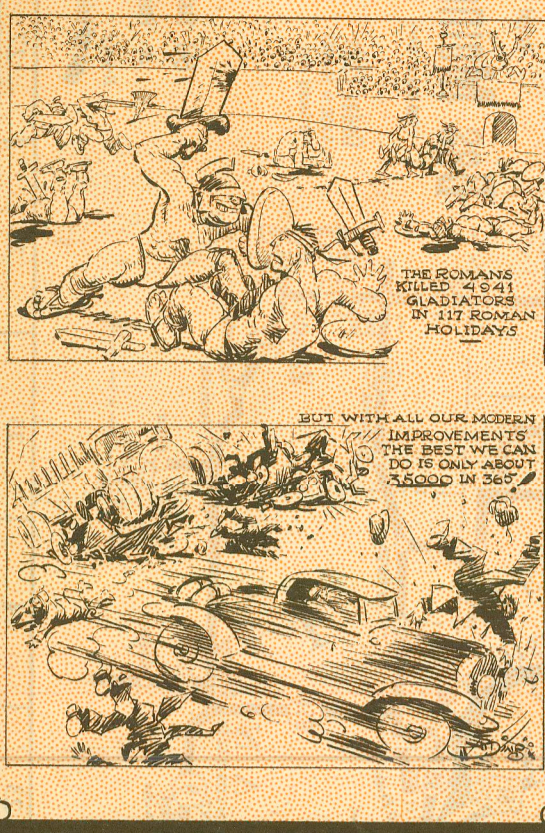


IOWA HIGHWAY MAP 1933

Who Said Machines Were So Much More Efficient Than Hand Labor?



Welcome Visiting Motorists

You will find that Iowa's motor vehicle regulations and traffic rules are comparatively few and simple. The alert, careful and courteous driver needs but few rules. You will encounter no pro-laws highways. With equal freedom you may loiter along the byways in search of beauty and reminders of an historic past, or you may hurry across the state on the smooth pavement of the main roads.

Iowa State Highway Commission AMES, IOWA

Cities and Towns of Iowa

Table with 4 columns: Loc., Town, 1930 Population, 1920 Population. Lists cities and towns alphabetically with their respective populations.

CITIES AND TOWNS—Continued

Continuation of the Cities and Towns of Iowa table, listing smaller municipalities.

CITIES AND TOWNS—Continued

Final continuation of the Cities and Towns of Iowa table.

CITIES AND TOWNS—Continued (Table 1)

CITIES AND TOWNS—Continued (Table 2)

CITIES AND TOWNS—Continued (Table 3)

CITIES AND TOWNS—Continued (Table 4)

CITIES AND TOWNS—Continued (Table 5)

CITIES AND TOWNS—Continued (Table 6)

CITIES AND TOWNS—Continued (Table 7)

CITIES AND TOWNS—Continued (Table 8)

CITIES AND TOWNS—Continued (Table 9)

CITIES AND TOWNS—Continued (Table 10)

CITIES AND TOWNS—Continued (Table 11)

CITIES AND TOWNS—Continued (Table 12)

CITIES AND TOWNS—Continued (Table 13)

CITIES AND TOWNS—Continued (Table 14)

CITIES AND TOWNS—Continued (Table 15)

CITIES AND TOWNS—Continued (Table 16)

CITIES AND TOWNS—Continued (Table 17)

CITIES AND TOWNS—Continued (Table 18)

CITIES AND TOWNS—Continued (Table 19)

CITIES AND TOWNS—Continued (Table 20)

CITIES AND TOWNS—Continued (Table 21)

CITIES AND TOWNS—Continued (Table 22)

CITIES AND TOWNS—Continued (Table 23)

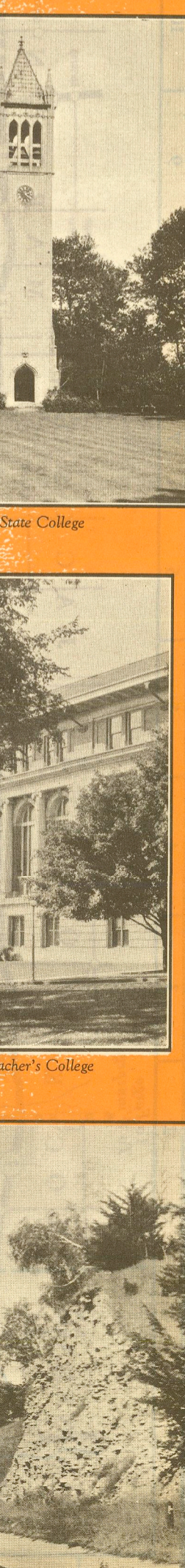
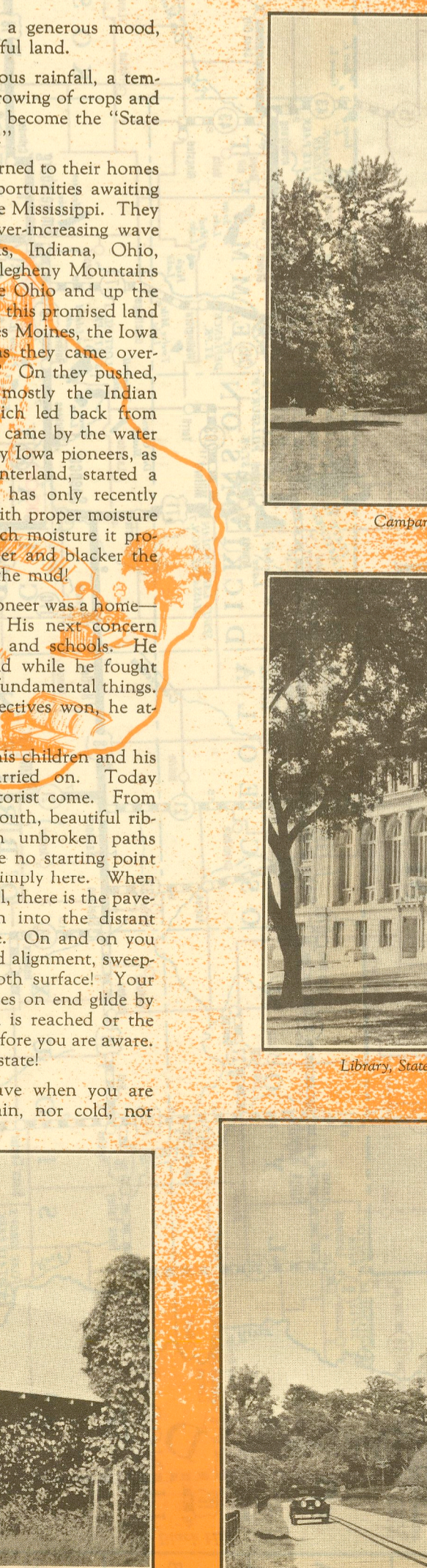
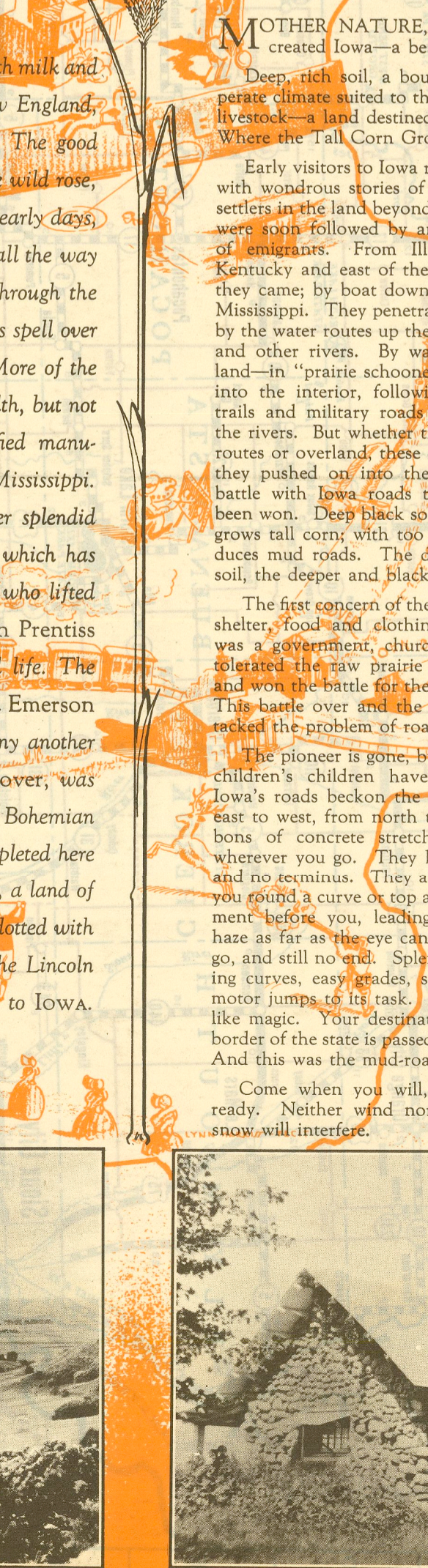
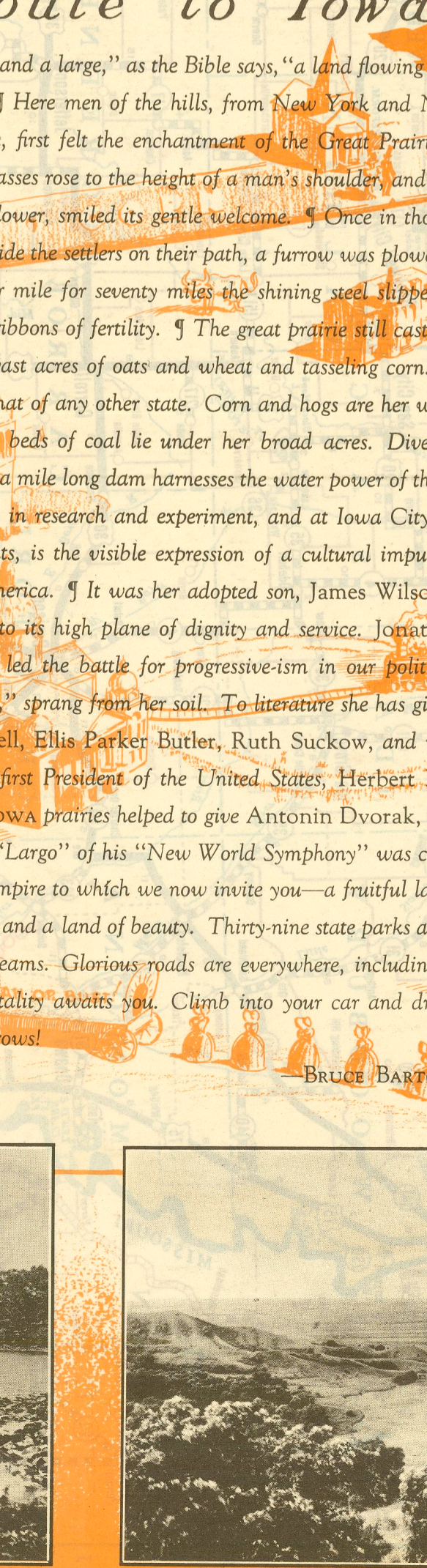
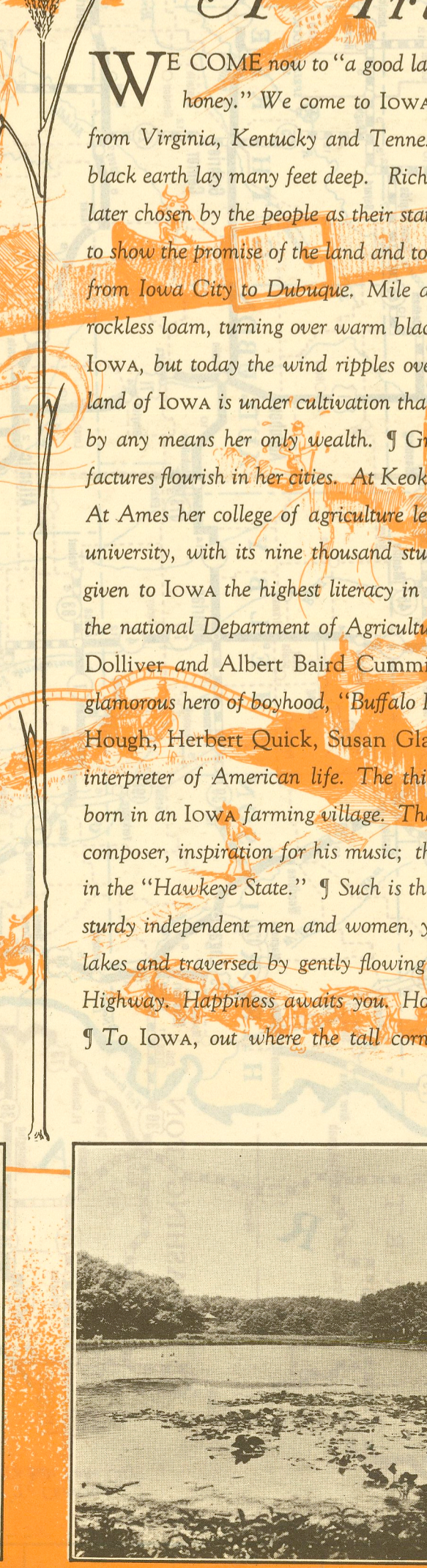
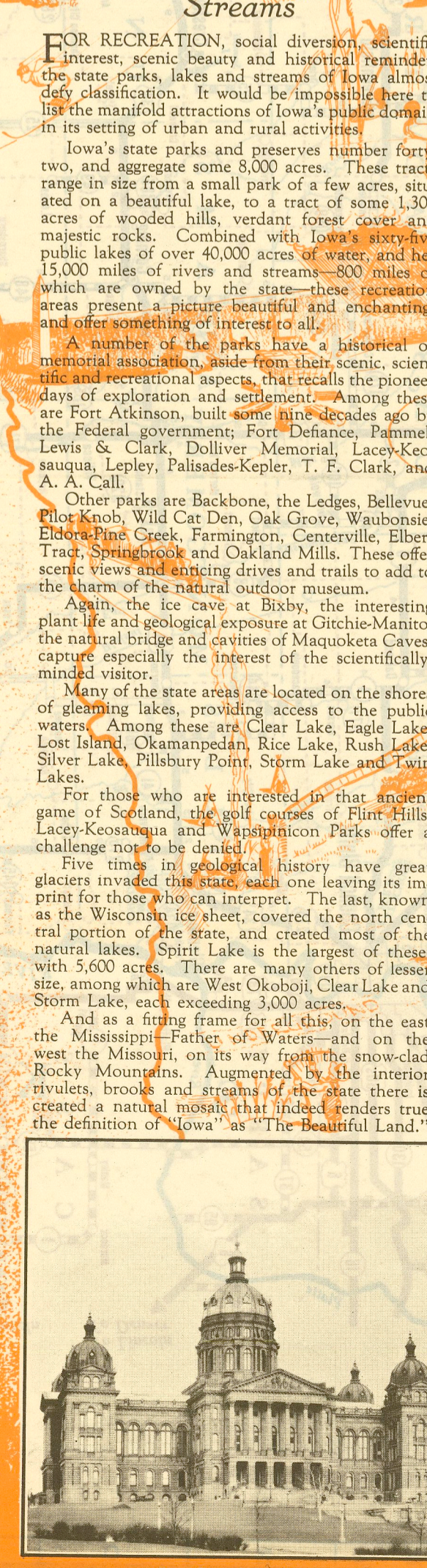
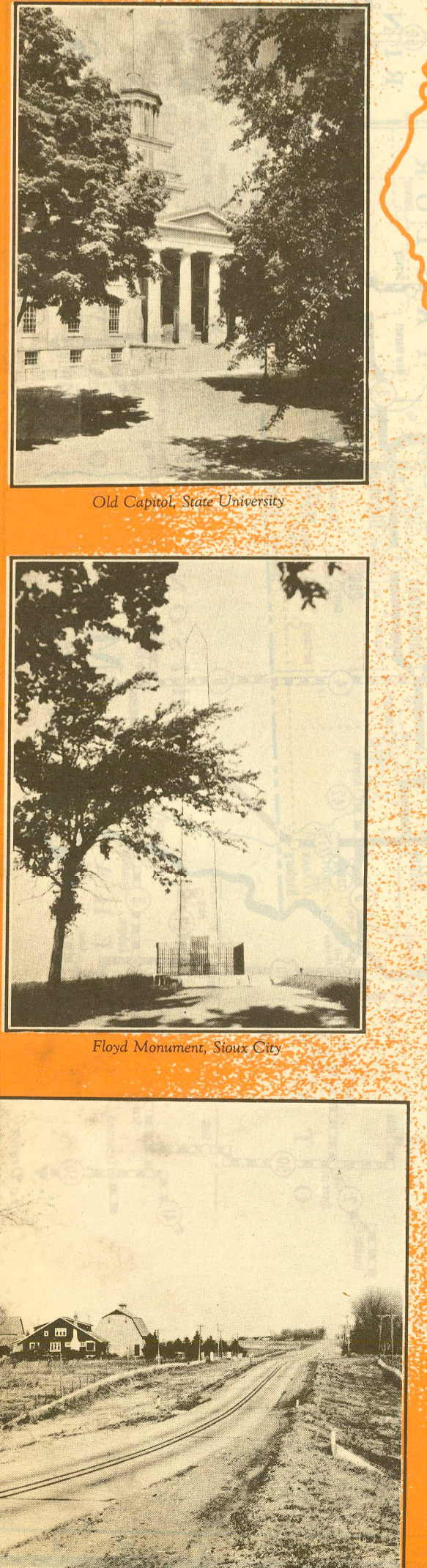
CITIES AND TOWNS—Continued (Table 24)

CITIES AND TOWNS—Continued (Table 25)

CITIES AND TOWNS—Continued (Table 26)

CITIES AND TOWNS—Continued (Table 27)

CITIES AND TOWNS—Continued (Table 28)



U. S. Road No. 6 East of Des Moines

Wild Cat Den State Park MAP KEY L-25

Farmington State Park MAP KEY Q-3

Eldora Pine Creek State Park

Rice Lake State Park

Mississippi River, Maquoketa

Campanile, State College

Old Capitol, State University

Flood Monument, Sioux City

Pilot Knob State Park MAP KEY B-13

Waukesha State Park MAP KEY Q-4

Okamopeland State Park MAP KEY A-D

Liberty State Teacher's College

Primary Road No. 13 Near Eldora

Iowa's Parks, Lakes and Streams

FOR RECREATION, scenic beauty and historical reminder, the state parks, lakes and streams of Iowa almost defy classification. It would be impossible here to list the manifold attractions of Iowa's parkable domain in its setting of urban and rural activities.

A Tribute to Iowa

WE COME now to "a good land and a large," as the Bible says, "a land flowing with milk and honey." We come to Iowa. Here men of the hills, from New York and New England, from Virginia, Kentucky and Tennessee, first felt the enchantment of the Great Prairie.

The Roads of Iowa

MOTHER NATURE, in a generous mood, created Iowa—a beautiful land. Deep, rich soil, a bounteous rainfall, a temperate climate suited to the growing of crops and livestock—a land destined to become the "State Where the Tall Corn Grows."

STATE PARKS OF IOWA

Table listing state parks of Iowa with columns for Name, Area, and Location.

MEANDERING LAKES

Table listing meandering lakes of Iowa with columns for Name, Area, and Location.

STATE INSTITUTIONS

Table listing state institutions of Iowa with columns for Name and Location.

Iowa State Fair and Exposition

Always the last week in August. Large camp grounds fully equipped open throughout the period of the fair.

State Capitol, Des Moines

Pilot Knob State Park MAP KEY B-13

Waukesha State Park MAP KEY Q-4

Okamopeland State Park MAP KEY A-D

Liberty State Teacher's College

Primary Road No. 13 Near Eldora