

TRANSPORTATION MAP
Iowa Department of Transportation

CITIES AND VILLAGES IN IOWA
STATE CAPITAL: DES MOINES
INTERCITY PASSENGER TRANSPORTATION SERVICES: AIR, RAIL, URBAN BUS SERVICE

NO POPULATION SHOWN FOR UNINCORPORATED PLACES

1990 POPULATION 2,776,755
COUNTY SEATS IN RED

MAP SYMBOLS

- RECREATION AREAS
- SAFETY REST AREAS
- CITIES AND VILLAGES
- Clear Lake
- State Capital
- County Seats

LEGEND

HIGHWAYS

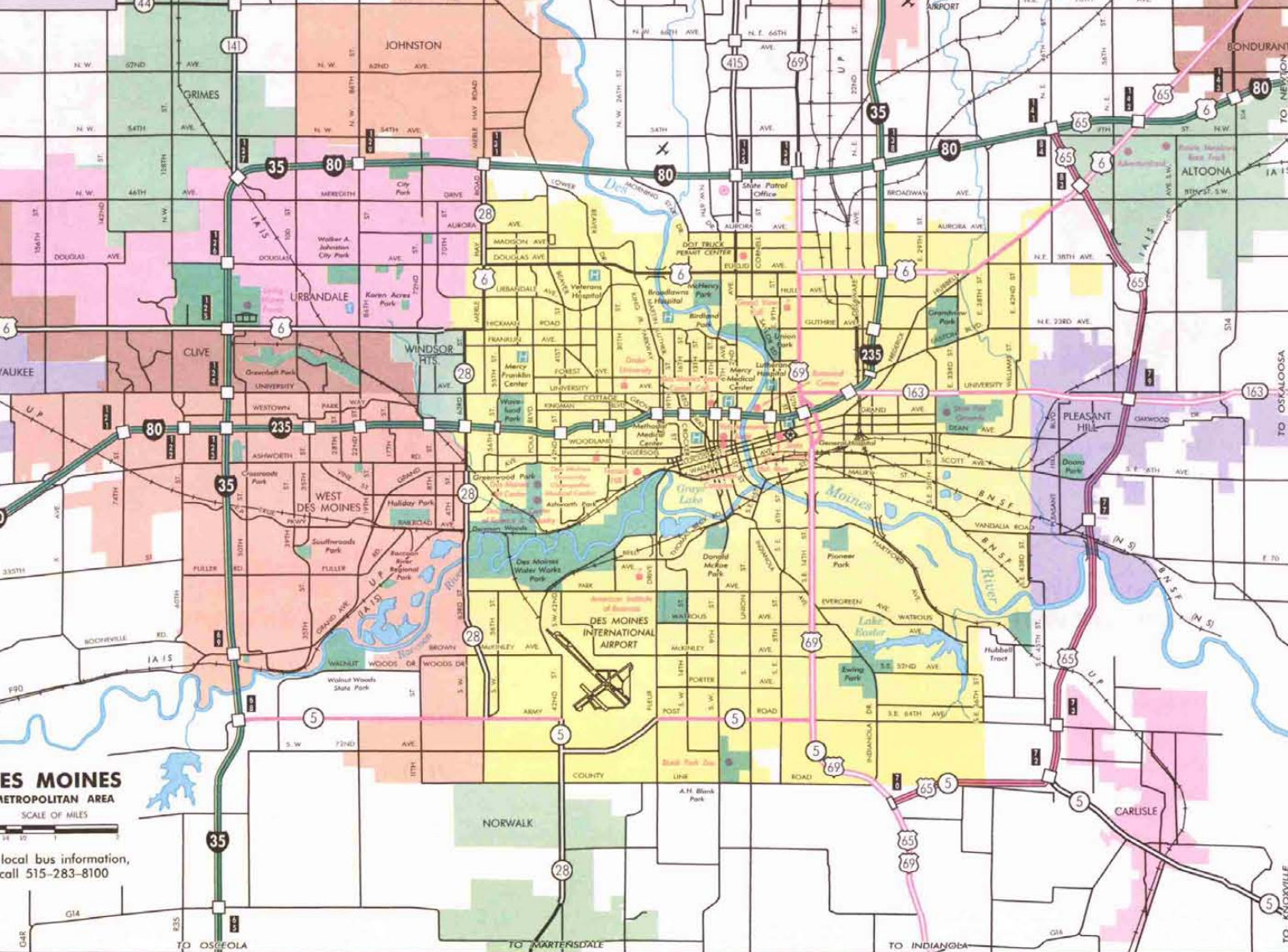
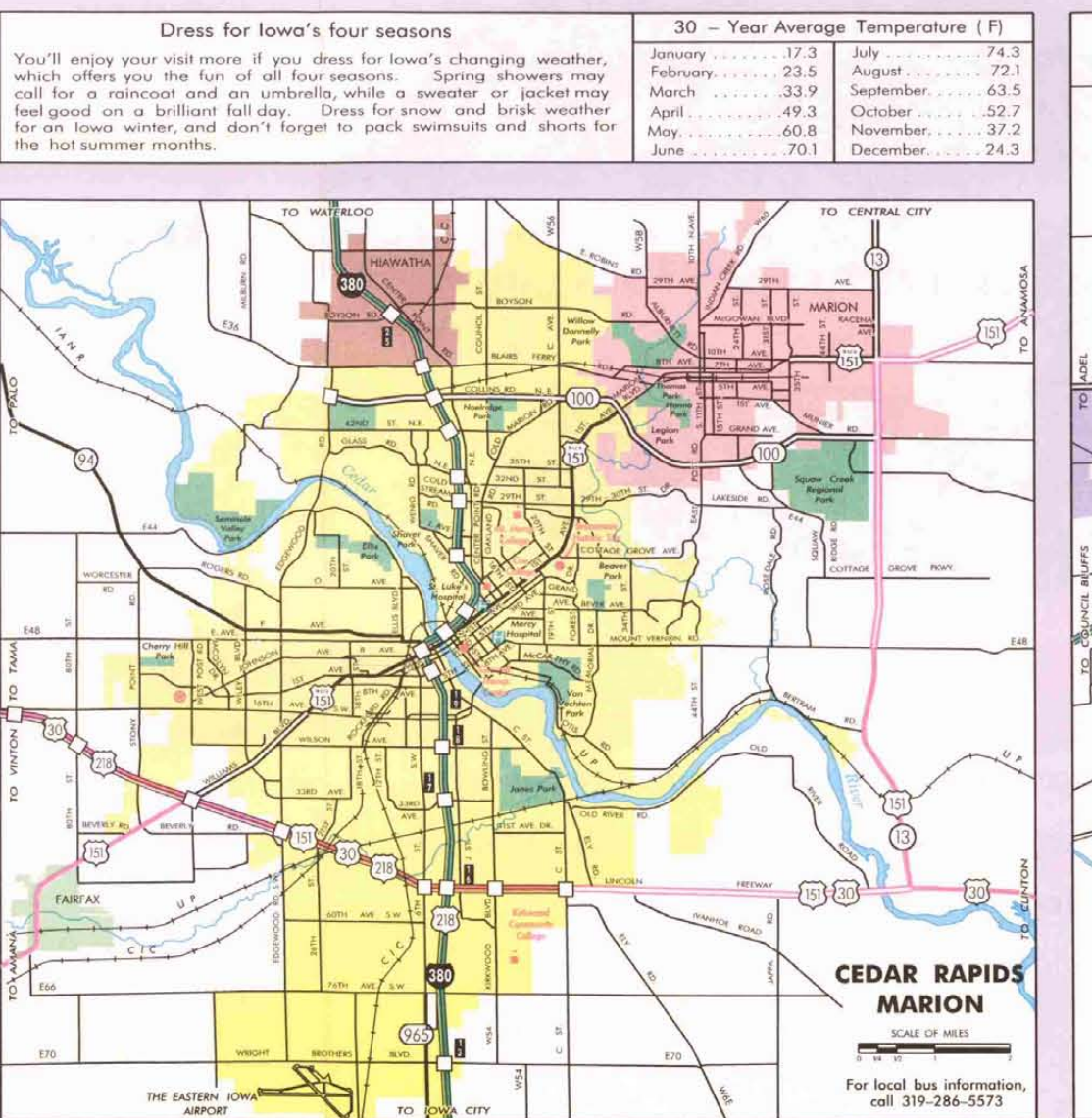
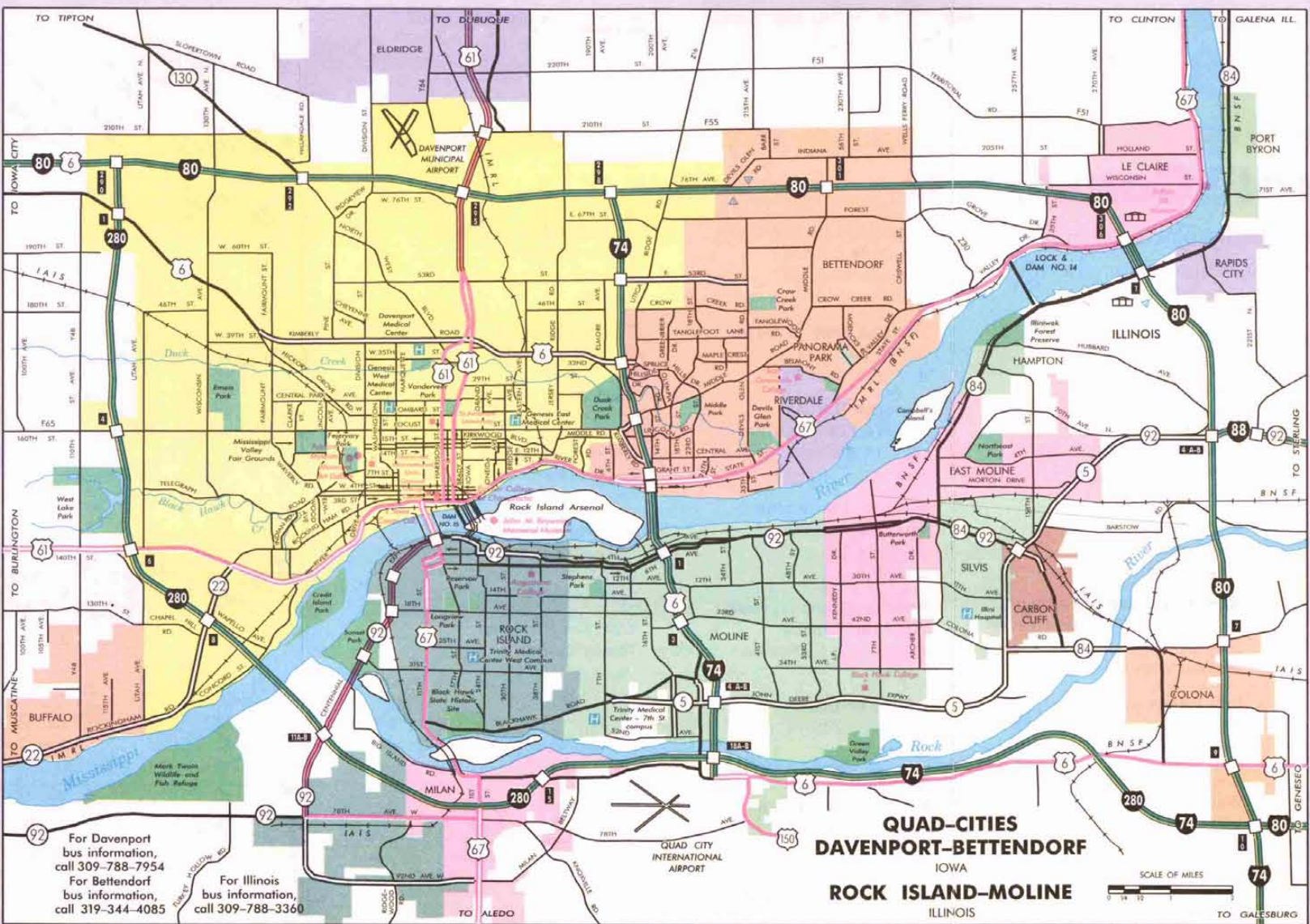
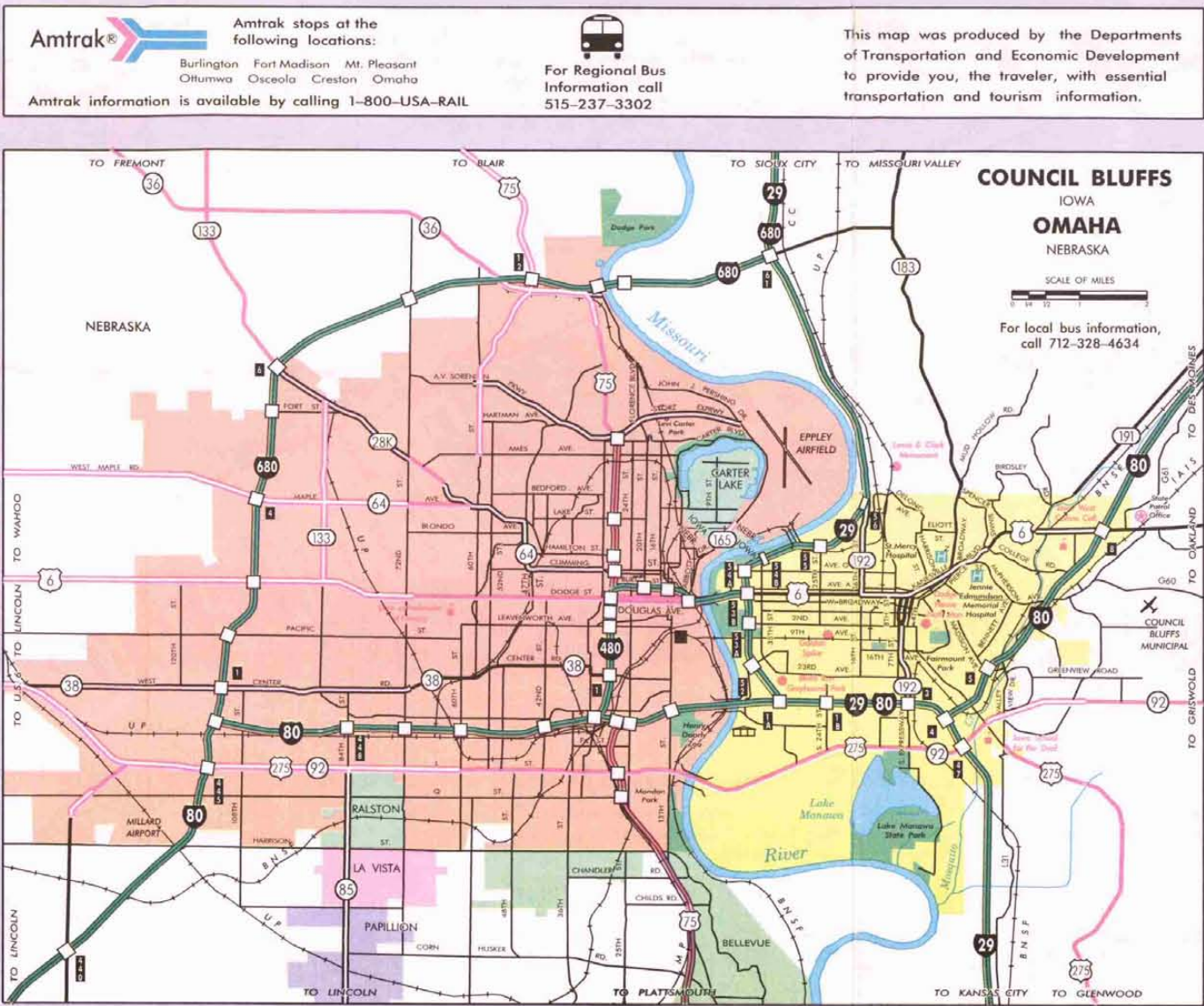
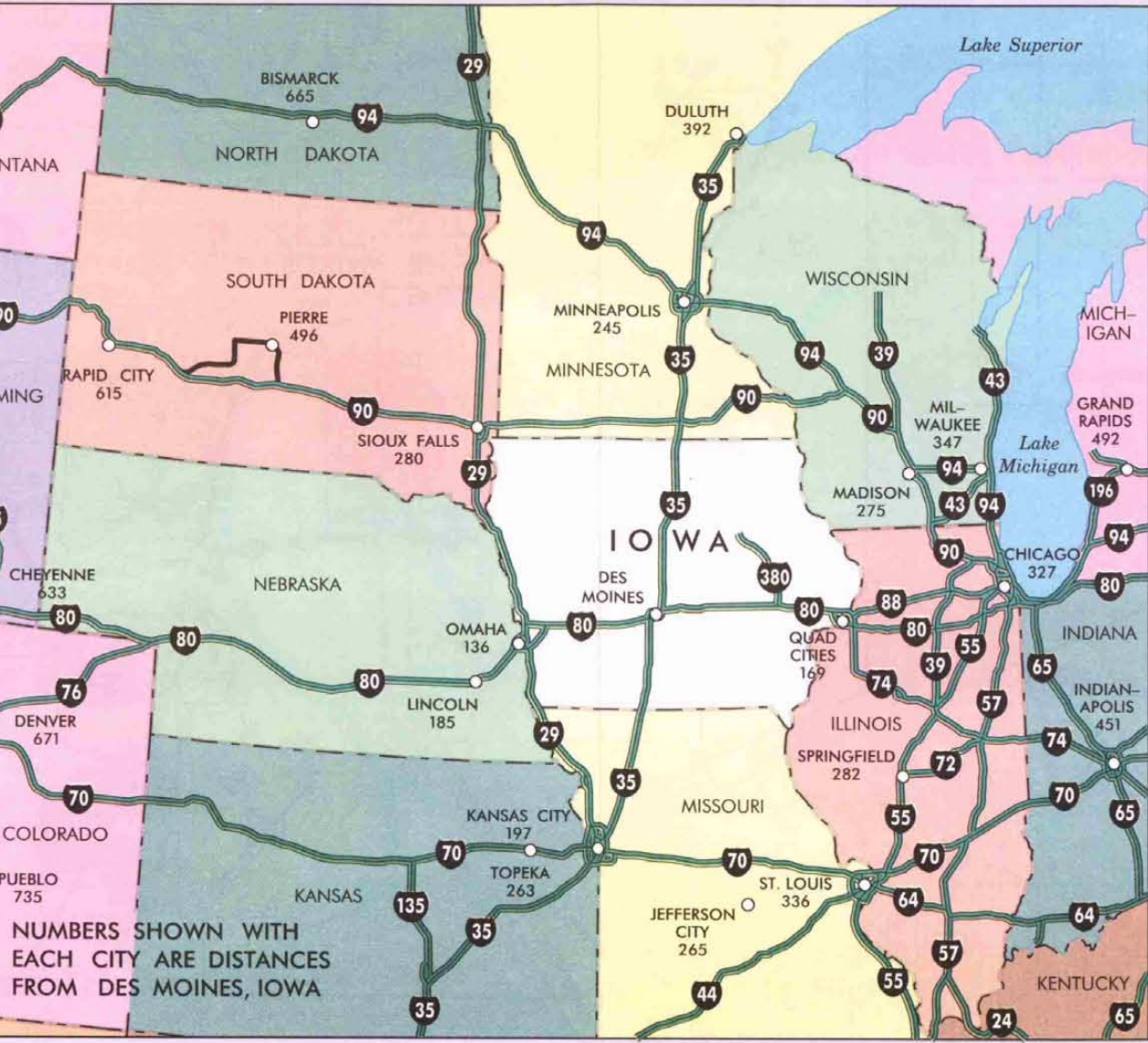
- PRINCIPAL STATE
- INTERSTATE
- MULTILANE DIVIDED
- MULTILANE UNDIVIDED
- PAVED
- UNPAVED
- OTHER STATE
- MULTILANE DIVIDED
- PAVED
- DOTTLED
- UNPAVED PRIMARY
- COUNTY ROADS
- UNPAVED
- DRAWN

ACCESS POINTS AND ROUTE MARKERS

- FULL TRAFFIC INTERCHANGE
- PARTIAL TRAFFIC INTERCHANGE
- INTERSTATE ROUTE MARKER
- U.S. HIGHWAY MARKER
- STATE HIGHWAY MARKER
- MILEAGE
- MILEAGE BETWEEN CITIES AND JUNCTIONS
- MILEAGE BETWEEN STARS

COUNTY INDEX

ADAMS	D-3	CHESTER	B-4	FRANKLIN	F-4	JOHNSON	J-3	MONROE	G-2	SIoux	A-7
ALLAMAKEE	L-7	CLARKE	E-2	GREENE	D-4	KEOKUK	H-3	MONTGOMERY	G-2	SHERBURNE	F-4
APPANOOSE	C-7	CLAYTON	E-2	GUTHRIE	D-3	LEWIS	E-1	MUSCATINE	J-3	TAMA	A-4
BLACK HAWK	H-3	CLAYTON	E-2	GUTHRIE	D-3	LEE	E-1	OSCEOLA	B-7	UNIOn	E-2
BREMER	H-3	CLAYTON	E-2	GUTHRIE	D-3	LEWIS	E-1	PAGE	C-4	VAN BUREN	D-4
BUCHANA	H-3	CLAYTON	E-2	GUTHRIE	D-3	LEWIS	E-1	PALM ALTO	D-7	WARREN	H-2
BURR	H-3	CLAYTON	E-2	GUTHRIE	D-3	LEWIS	E-1	PAGE	C-4	WASHINGTON	I-3
BURR	H-3	CLAYTON	E-2	GUTHRIE	D-3	LEWIS	E-1	PAGE	C-4	WAYNE	H-2
BURR	H-3	CLAYTON	E-2	GUTHRIE	D-3	LEWIS	E-1	PAGE	C-4	WATSON	H-2
BURR	H-3	CLAYTON	E-2	GUTHRIE	D-3	LEWIS	E-1	PAGE	C-4	WEBSTER	E-2
BURR	H-3	CLAYTON	E-2	GUTHRIE	D-3	LEWIS	E-1	PAGE	C-4	WORTH	H-2
BURR	H-3	CLAYTON	E-2	GUTHRIE	D-3	LEWIS	E-1	PAGE	C-4	WRIGHT	E-2
BURR	H-3	CLAYTON	E-2	GUTHRIE	D-3	LEWIS	E-1	PAGE	C-4	WRIGHT	E-2



Dress for Iowa's four seasons

Month	30-Year Average Temperature (F)
January	23.5
February	23.5
March	33.9
April	49.3
May	60.0
June	70.1
July	72.1
August	72.1
September	63.6
October	52.7
November	37.5
December	24.3